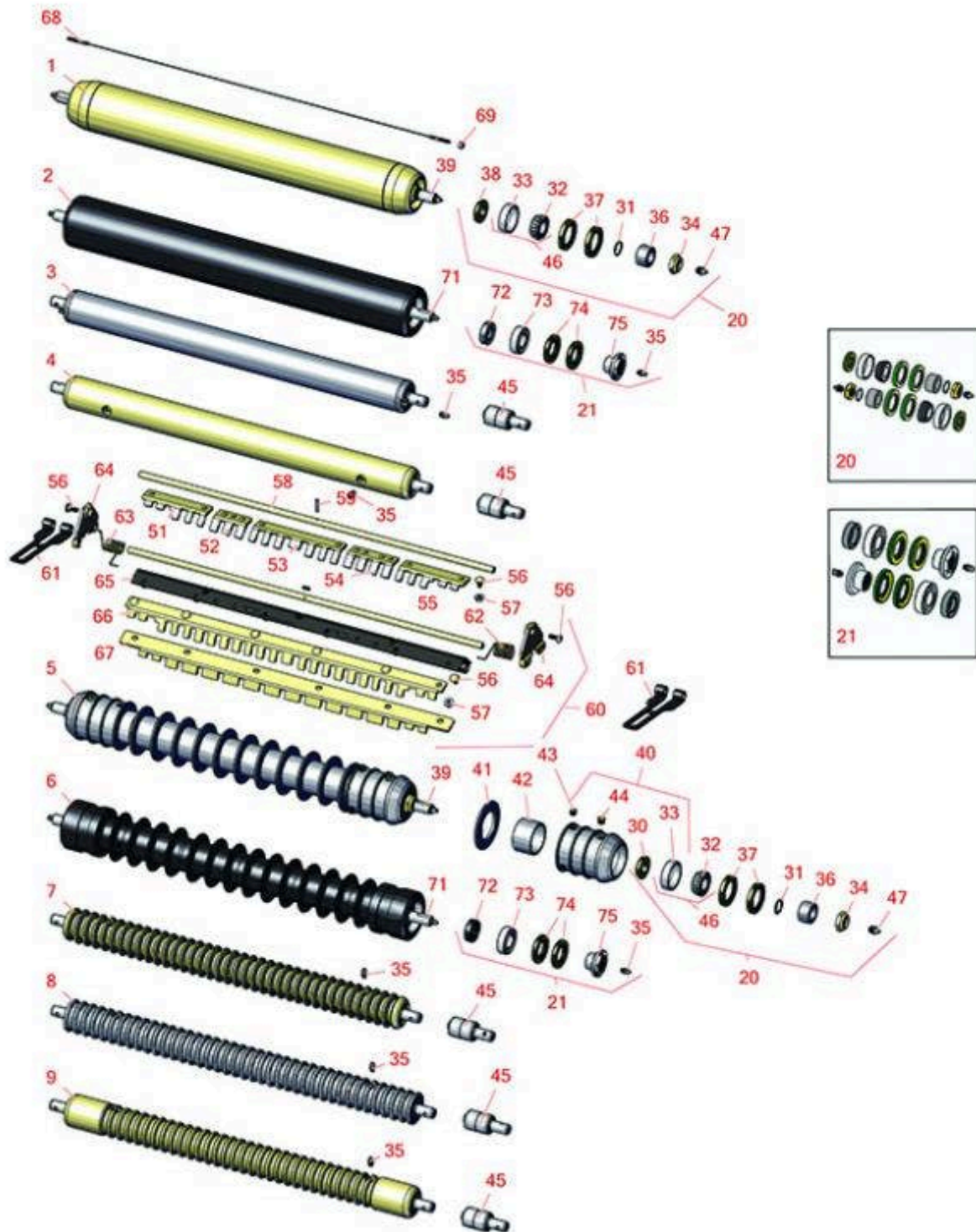




# Replaces John Deere 7700 Reel Mower

## Parts

Cutting Unit - Serial 020001 & Up  
Rollers



All original equipment manufacturers names and part numbers are used for identification purposes only, and we are in no way implying that our products are original equipment parts. Prices subject to change without notice.



# Replaces John Deere 7700 Reel Mower Parts

Cutting Unit - Serial 020001 & Up  
Rollers



Item No	R&R Part No.	OEM Part No.	Description	Qty Req	Price Each	Order Quantity
---------	--------------	--------------	-------------	---------	------------	----------------

## R&R Rollers

1	<b>RAET11263</b>	AET11263, AMT2967	Roller - Smooth Tubular Steel	1	<b>222.10</b>	
---	------------------	----------------------	-------------------------------	---	---------------	--

*Tech Note: Constructed with a through shaft, this heavy duty roller uses greasable tapered bearings for extended life.:*

2	<b>R1203825</b>		Roller - Fusion Smooth UHMW Polyethylene	1	<b>241.80</b>	
---	-----------------	--	--	---	---------------	--

*Tech Note: Fusion Rollers combine the best features of our UHMW plastic rollers with a heavy-duty internal bearing system. Machined from solid UHMW plastic that prevents build-up of debris. This roller turns on precision stainless ball bear... <Click Part# for more>:*

3	<b>RAET10111</b>	AET10111, AMT2876	Roller - Smooth Tubular Steel	1	<b>138.30</b>	
---	------------------	----------------------	-------------------------------	---	---------------	--

*Tech Note: This tubular steel roller uses greasable "water-pump" style bearings.:*

4	<b>RAMT1442</b>	AMT1442, AMT2878	Roller - Smooth Solid Steel	1	<b>201.40</b>	
---	-----------------	---------------------	-----------------------------	---	---------------	--

*Tech Note: Machined from solid steel, this heavy weight roller uses greasable "water-pump" style bearings.:*

5	<b>R500512</b>	AMT2966, BM25317	Roller - Grooved Repairable Steel	1	<b>299.90</b>	
---	----------------	---------------------	-----------------------------------	---	---------------	--

*Tech Note: Constructed with a through shaft and greasable ball bearings. This roller can be repaired by unscrewing the ends and replacing the series of washers and spacers.:*

6	<b>R1203820</b>	1203752	Roller - Fusion Grooved UHMW Polyethylene	1	<b>308.85</b>	
---	-----------------	---------	---	---	---------------	--

*Tech Note: Fusion Rollers combine the best features of our UHMW plastic rollers with a heavy-duty internal bearing system. Machined from solid UHMW plastic that prevents build-up of debris. This roller has a patented deep groove design and ... <Click Part# for more>:*

7	<b>RAET10954</b>	AET10954, AMT2875, AMT2879	Roller - Grooved Machined Solid Steel	1	<b>197.85</b>	
---	------------------	----------------------------------	---------------------------------------	---	---------------	--

*Tech Note: Machined from solid steel, this heavy weight roller uses greasable "water-pump" style bearings.:*

All original equipment manufacturers names and part numbers are used for identification purposes only, and we are in no way implying that our products are original equipment parts. Prices subject to change without notice.



# Replaces John Deere 7700 Reel Mower Parts

Cutting Unit - Serial 020001 & Up  
Rollers



Item No	R&R Part No.	OEM Part No.	Description	Qty Req	Price Each	Order Quantity
8	<b>RAMT1061</b>	AET10557, AMT1061, AMT2877	Roller - Grooved Machined Solid Steel	1	<b>198.90</b>	
<i>Tech Note: Machined from solid steel, this heavy weight roller uses greasable "water-pump" style bearings.:</i>						
9	<b>RAMT1443</b>	AMT1443, AMT2879	Roller - Grooved Machined Solid Steel	1	<b>206.90</b>	
<i>Tech Note: Machined from solid steel, this heavy weight roller uses greasable "water-pump" style bearings. Extended length body.:</i>						
<b>Overhaul Kits</b>						
20	<b>RAET10632</b>	AET10632	Overhaul Kit - Roller	1	<b>76.55</b>	
<i>Tech Note: Includes 4 ea: RET15755 Seal; 2 ea: R237-54 O-Ring, R253-122 Seal, R254-78 Bearing, R254-79 Cup, R3296-15 Locknut, R471219 Grease Zerk, RET15726 Sleeve, RET15756 Seal:</i>						
21	<b>R114-5430</b>		Overhaul Kit - Roller	1	<b>82.40</b>	
<i>Tech Note: Includes 4 ea.: R112-7494 Seals; 2 ea.: R302-5 Grease Zerks, R114-3717 Seals, R112-5290 Bearings &amp; R114-3745 Locknuts:</i>						
<b>Other Parts Available</b>						
30	<b>R253-122</b>	253-122	Seal	2	<b>3.55</b>	
31	<b>R237-54</b>	U46731, U6731	O-Ring - Small	2	<b>0.50</b>	
32	<b>R254-78</b>	JD8188	Tapered Bearing Cone	2	<b>6.05</b>	
33	<b>R254-79</b>	JD8226	Cup - Bearing	2	<b>3.20</b>	
<i>Tech Note: Use R254-79M installation mandrel to properly install race.:</i>						
34	<b>R3296-15</b>	N101345	Locknut - 3/4-16 Nylon Jam	2	<b>2.15</b>	
35	<b>R302-5</b>	JD7797, JD7842, JD7844	Fitting - Grease	2	<b>0.27</b>	

All original equipment manufacturers names and part numbers are used for identification purposes only, and we are in no way implying that our products are original equipment parts. Prices subject to change without notice.



# Replaces John Deere 7700 Reel Mower Parts

Cutting Unit - Serial 020001 & Up  
Rollers



Item No	R&R Part No.	OEM Part No.	Description	Qty Req	Price Each	Order Quantity
36	RET15726	ET15726, RET15726	Sleeve - Wear Hardened	2	13.95	
37	RET15755	ET15755	Seal - Oil	4	5.15	
38	RET15756	ET15756, MT1739, MT739	Seal	2	5.45	
39	RET17515	ET17515	Shaft - Roller	1	49.45	
40	R500511		Roller End - Threaded 3	2	84.45	
41	R150673		Washer - 3 Repairable Roller	11	1.45	
42	R150676		Spacer - 2-3/4 Dia x 1-1/4 L	10	3.75	
43	R150690		Screw - Set 1/4-20 x 1/4	4	0.78	
44	R170714	E14814	Fitting - Pressure Relief	2	2.25	
45	RAA35741	AA35741, AET10129, TCA22836	Bearing	2	18.80	
<i>Tech Note: 1/4" Side Hole:</i>						
46	R500534		Bearing - with Cup	2	11.80	
47	R471219	471219, JD7759, JD7798	Zerk - Grease	2	0.41	
51	RMT5158	MT5158	Scraper - Fits J.D. RH End	1	8.05	
52	RMT2342	MT2342	Section - Grooved Scraper 3 Tooth	1	5.80	
53	RMT2340	MT2340	Scraper - Fits J.D. Center	1	9.65	
54	RMT2341	MT2341	Section - Grooved Scraper 4 Tooth	1	5.45	
55	RMT5159	MT5159	Scraper - Fits J.D. LH End	1	8.05	

All original equipment manufacturers names and part numbers are used for identification purposes only, and we are in no way implying that our products are original equipment parts. Prices subject to change without notice.



# Replaces John Deere 7700 Reel Mower Parts

Cutting Unit - Serial 020001 & Up  
Rollers



Item No	R&R Part No.	OEM Part No.	Description	Qty Req	Price Each	Order Quantity
56	<b>R03M7221</b>	03M7221	Bolt - Carriage M6 x 16	10	<b>0.55</b>	
57	<b>R14M7303</b>	14M7303	Nut - 6mm x 1.0 Flanged	10	<b>0.39</b>	
58	<b>RET17757</b>	ET11757, ET17757	Pin - Scraper	1	<b>9.75</b>	
59	<b>R34M7010</b>	34M7010	Pin - Spring	1	<b>0.29</b>	
60	<b>R500559</b>	BM18680, MT18680	Scraper Kit - Grooved Roller	1	<b>366.50</b>	
<i>Tech Note: Fits John Deere AET11262 &amp; AMT2966 Grooved Roller Only:</i>						
61	<b>RTC26998</b>	TCU26998	Panel	2	<b>22.51</b>	
60	<b>R500573</b>		Scraper Kit - SET/5	1	<b>358.75</b>	
<i>Tech Note: Fits R&amp;R R500512 Roller Only &amp; Incl R500572 Scraper:</i>						
62	<b>RET17629</b>	ET17629	Spring - Torsion LH	1	<b>7.05</b>	
63	<b>RET17630</b>	ET17630	Spring - Torsion RH	1	<b>7.05</b>	
64	<b>RMT2407</b>	MT2407	Bracket - Roller Scraper	2	<b>15.85</b>	
65	<b>R500571</b>	MT2369	Bar - Scraper	1	<b>32.40</b>	
66	<b>R500558</b>		Scraper - Grooved Roller	1	<b>31.55</b>	
<i>Tech Note: 1 Piece Scraper fits OEM AET11262 &amp; AMT2966 Grooved Roller:</i>						
67	<b>R500572</b>		Scraper - Fits R500512 Only	1	<b>31.55</b>	
68	<b>RTCA19566</b>	TCA19566	Cable - Smooth Roller Scraper	1	<b>13.45</b>	
69	<b>RU45916</b>	14M7298, U45916	Locknut - 10-24 ESNA	2	<b>0.32</b>	
71	<b>R1203821</b>		Shaft - Fusion Roller	1	<b>48.95</b>	
72	<b>R114-3717</b>		Seal	2	<b>2.35</b>	

All original equipment manufacturers names and part numbers are used for identification purposes only, and we are in no way implying that our products are original equipment parts. Prices subject to change without notice.



# Replaces John Deere 7700 Reel Mower Parts

*Cutting Unit - Serial 020001 & Up  
Rollers*



Item No	R&R Part No.	OEM Part No.	Description	Qty Req	Price Each	Order Quantity
73	<b>R112-5290</b>		Bearing - Stainless	2	<b>10.30</b>	
74	<b>R112-7494</b>		Seal	4	<b>5.15</b>	
75	<b>R114-3745</b>		Locknut - Bearing - Stainless	2	<b>19.15</b>	

All original equipment manufacturers names and part numbers are used for identification purposes only, and we are in no way implying that our products are original equipment parts. Prices subject to change without notice.