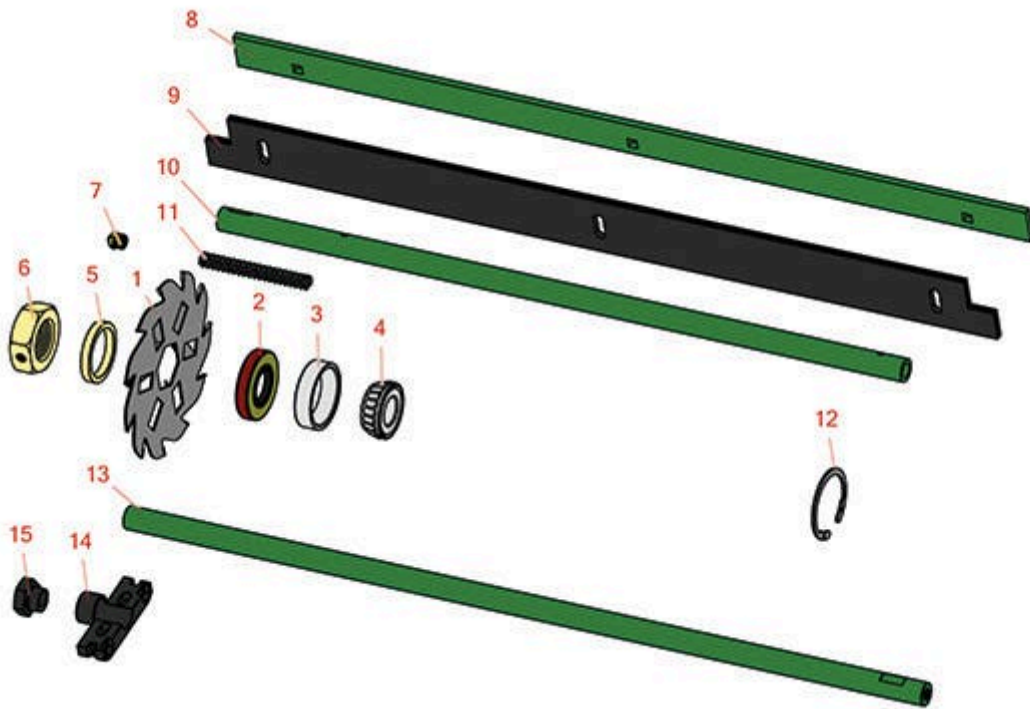




# Replaces John Deere 7500A E-Cut Hybrid Reel Mower Parts

Verti-Cut Unit  
Reel & Frame



All original equipment manufacturers names and part numbers are used for identification purposes only, and we are in no way implying that our products are original equipment parts. Prices subject to change without notice.



# Replaces John Deere 7500A E-Cut Hybrid Reel Mower Parts

Verti-Cut Unit  
Reel & Frame



Item No	R&R Part No.	OEM Part No.	Description	Qty Req	Price Each	Order Quantity
1	<b>R150109C</b>		Verti-Cut Blade - Carbide Tipped 1.2mm	27	<b>12.35</b>	
1	<b>R150209C</b>	TCU26776	Verti-Cut Blade - Carbide Tipped 2mm	27	<b>11.95</b>	
2	<b>RET14566</b>	ET14566	Seal - Reel	2	<b>6.80</b>	
3	<b>R254-79</b>	JD8226	Cup - Bearing	2	<b>3.20</b>	
<i>Tech Note: Use R254-79M installation mandrel to properly install race.:</i>						
4	<b>R254-78</b>	JD8188	Tapered Bearing Cone	2	<b>6.05</b>	
5	<b>RET17713</b>	ET17713	Spacer - Vertical Mower Shaft	78	<b>3.45</b>	
6	<b>RET17053</b>	ET17053	Nut - 1-1/8-7 Jam Incl Set Screw	2	<b>9.95</b>	
7	<b>R170714</b>	E14814	Fitting - Pressure Relief	2	<b>2.25</b>	
8	<b>RAMT2704</b>	AMT2704, MT169	Strap - Verticut Shield	1	<b>24.55</b>	
9	<b>RET17914</b>	ET17914	Rubber Isolator - Verticut	1	<b>27.90</b>	
10	<b>RTCUC26729</b>	TCU26729	Tube	1	<b>46.90</b>	
11	<b>RTCUC25398</b>	TCU25398	Compression Spring	1	<b>5.85</b>	
12	<b>R40M7226</b>	40M1862, 40M7226	Ring - Retaining	2	<b>9.05</b>	
13	<b>RTCUC26727</b>	TCU26727	Rod	1	<b>30.55</b>	
14	<b>RTCUC28987</b>	TCU28987	Half Clamp - Roller Bkt	2	<b>29.10</b>	
15	<b>RTCUC28635</b>	TCU24555, TCU28635	Eccentric	2	<b>15.55</b>	

All original equipment manufacturers names and part numbers are used for identification purposes only, and we are in no way implying that our products are original equipment parts. Prices subject to change without notice.