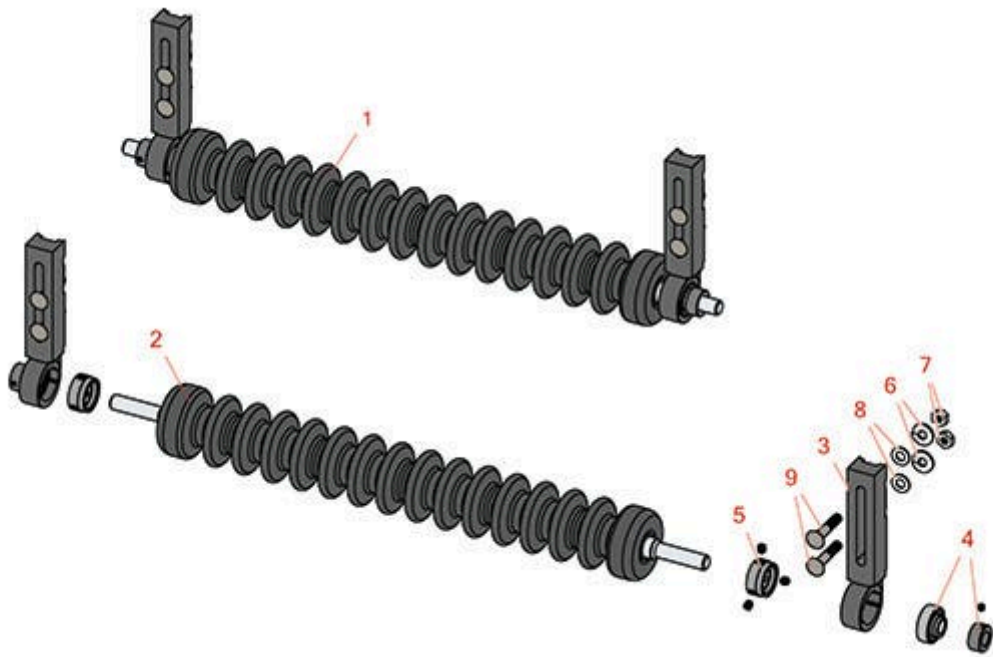




# Replaces John Deere 3235B Reel Mower Parts

*Heavy Cutting Unit  
Minuteman Roller System*



All original equipment manufacturers names and part numbers are used for identification purposes only, and we are in no way implying that our products are original equipment parts. Prices subject to change without notice.



# Replaces John Deere 3235B Reel Mower Parts

Heavy Cutting Unit  
Minuteman Roller System



Item No	R&R Part No.	OEM Part No.	Description	Qty Req	Price Each	Order Quantity
---------	--------------	--------------	-------------	---------	------------	----------------

## Complete Minuteman Roller Systems

1	<b>RMD1001</b>		Minuteman Front Grooved Roller System	0	<b>399.60</b>	
---	----------------	--	---------------------------------------	---	---------------	--

*Tech Note: Complete roller systems include roller and two brackets with bearings.:*

## Minuteman Rollers Only

2	<b>RM528</b>		Minuteman Grooved Roller Only	0	<b>283.40</b>	
---	--------------	--	-------------------------------	---	---------------	--

*Tech Note: Use with Minuteman Roller Bracket System Only:*

## Other Parts Available

3	<b>RD121</b>		Bracket Assy - Front/Rear RH/LH	0	<b>74.65</b>	
---	--------------	--	---------------------------------	---	--------------	--

4	<b>RMMB157</b>		Bearing w/Locking Collar	0	<b>20.95</b>	
---	----------------	--	--------------------------	---	--------------	--

5	<b>RMM3</b>		End Hub - 7/8 ID	0	<b>9.85</b>	
---	-------------	--	------------------	---	-------------	--

6	<b>R120177</b>		Washer - Lock 3/8	0	<b>0.26</b>	
---	----------------	--	-------------------	---	-------------	--

7	<b>R443110</b>		Nut - 3/8-16 Hex	0	<b>0.14</b>	
---	----------------	--	------------------	---	-------------	--

8	<b>R453011</b>	24M7096	Washer - Flat 3/8 SAE Y/Zinc	0	<b>0.11</b>	
---	----------------	---------	------------------------------	---	-------------	--

9	<b>RMM604</b>		Bolt - Carriage 3/8-16 x 2 Gr 5	0	<b>1.30</b>	
---	---------------	--	---------------------------------	---	-------------	--

All original equipment manufacturers names and part numbers are used for identification purposes only, and we are in no way implying that our products are original equipment parts. Prices subject to change without notice.