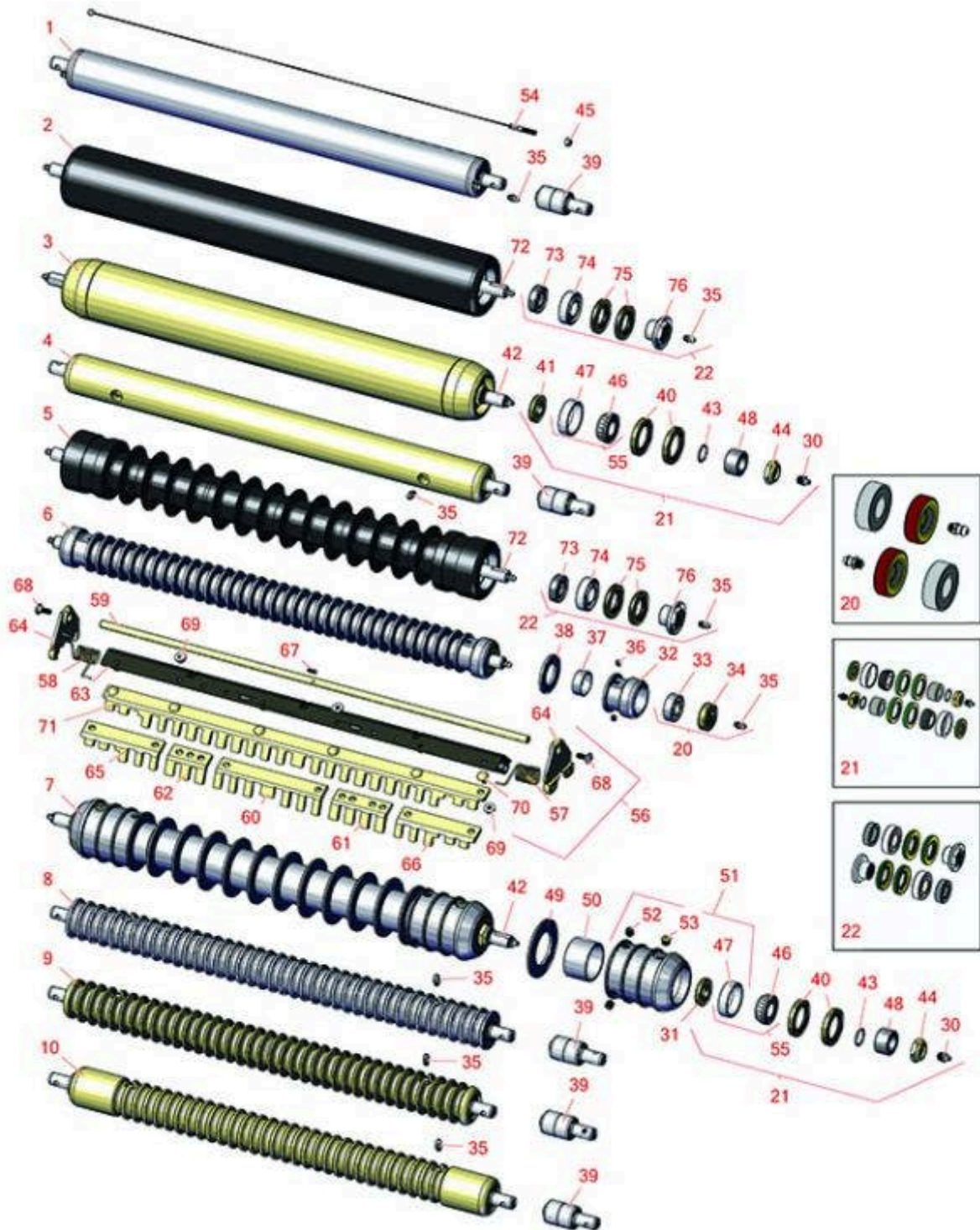




Replaces John Deere 3215A Reel Mower

Parts

Medium Cutting Unit
Rollers



All original equipment manufacturers names and part numbers are used for identification purposes only, and we are in no way implying that our products are original equipment parts. Prices subject to change without notice.



Replaces John Deere 3215A Reel Mower

Parts

Medium Cutting Unit
Rollers



Item No	R&R Part No.	OEM Part No.	Description	Qty Req	Price Each	Order Quantity
---------	--------------	--------------	-------------	---------	------------	----------------

R&R Rollers

1	RAET10111	AET10111, AMT2876	Roller - Smooth Tubular Steel	0	138.30	
---	------------------	----------------------	-------------------------------	---	---------------	--

Tech Note: This tubular steel roller uses greasable "water-pump" style bearings.:

2	R1203825		Roller - Fusion Smooth UHMW Polyethylene	0	241.80	
---	-----------------	--	--	---	---------------	--

Tech Note: Fusion Rollers combine the best features of our UHMW plastic rollers with a heavy-duty internal bearing system. Machined from solid UHMW plastic that prevents build-up of debris. This roller turns on precision stainless ball bear... <Click Part# for more>:

3	RAET11263	AET11263, AMT2967	Roller - Smooth Tubular Steel	0	222.10	
---	------------------	----------------------	-------------------------------	---	---------------	--

Tech Note: Constructed with a through shaft, this heavy duty roller uses greasable tapered bearings for extended life.:

4	RAMT1442	AMT1442, AMT2878	Roller - Smooth Solid Steel	0	201.40	
---	-----------------	---------------------	-----------------------------	---	---------------	--

Tech Note: Machined from solid steel, this heavy weight roller uses greasable "water-pump" style bearings.:

5	R1203820	1203752	Roller - Fusion Grooved UHMW Polyethylene	0	308.85	
---	-----------------	---------	---	---	---------------	--

Tech Note: Fusion Rollers combine the best features of our UHMW plastic rollers with a heavy-duty internal bearing system. Machined from solid UHMW plastic that prevents build-up of debris. This roller has a patented deep groove design and ... <Click Part# for more>:

6	R68527R		Roller - Grooved Repairable Steel	0	192.10	
---	----------------	--	-----------------------------------	---	---------------	--

Tech Note: Constructed with a through shaft and greasable ball bearings, this roller can be repaired by unscrewing the ends and replacing the series of washers and spacers.:

7	R500512	AMT2966, BM25317	Roller - Grooved Repairable Steel	0	299.90	
---	----------------	---------------------	-----------------------------------	---	---------------	--

Tech Note: Constructed with a through shaft and greasable ball bearings. This roller can be repaired by unscrewing the ends and replacing the series of washers and spacers.:

All original equipment manufacturers names and part numbers are used for identification purposes only, and we are in no way implying that our products are original equipment parts. Prices subject to change without notice.



Replaces John Deere 3215A Reel Mower

Parts

Medium Cutting Unit
Rollers



Item No	R&R Part No.	OEM Part No.	Description	Qty Req	Price Each	Order Quantity
8	RAMT1061	AET10557, AMT1061, AMT2877	Roller - Grooved Machined Solid Steel	0	198.90	
<i>Tech Note: Machined from solid steel, this heavy weight roller uses greasable "water-pump" style bearings.:</i>						
9	RAET10954	AET10954, AMT2875, AMT2879	Roller - Grooved Machined Solid Steel	0	197.85	
<i>Tech Note: Machined from solid steel, this heavy weight roller uses greasable "water-pump" style bearings.:</i>						
10	RAMT1443	AMT1443, AMT2879	Roller - Grooved Machined Solid Steel	0	206.90	
<i>Tech Note: Machined from solid steel, this heavy weight roller uses greasable "water-pump" style bearings. Extended length body.:</i>						
Overhaul Kits						
20	R100130		Overhaul Kit - Roller	0	40.30	
<i>Tech Note: Includes 2 ea.: R302-5 Grease Fittings, R303558 Bearings, & R305115 Seals:</i>						
21	RAET10632	AET10632	Overhaul Kit - Roller	0	76.55	
<i>Tech Note: Includes 4 ea: RET15755 Seal; 2 ea: R237-54 O-Ring, R253-122 Seal, R254-78 Bearing, R254-79 Cup, R3296-15 Locknut, R471219 Grease Zerk, RET15726 Sleeve, RET15756 Seal:</i>						
22	R114-5430		Overhaul Kit - Roller	0	82.40	
<i>Tech Note: Includes 4 ea.: R112-7494 Seals; 2 ea.: R302-5 Grease Zerks, R114-3717 Seals, R112-5290 Bearings & R114-3745 Locknuts:</i>						
Other Parts Available						
30	R471219	471219, JD7759, JD7798	Zerk - Grease	2	0.41	
31	R253-122	253-122	Seal	2	3.55	

All original equipment manufacturers names and part numbers are used for identification purposes only, and we are in no way implying that our products are original equipment parts. Prices subject to change without notice.



Replaces John Deere 3215A Reel Mower

Parts

Medium Cutting Unit
Rollers



Item No	R&R Part No.	OEM Part No.	Description	Qty Req	Price Each	Order Quantity
32	R150650		Roller End - 2 Repairable	2	54.25	
33	R303558	ET15220	Bearing - Roller	2	14.60	
34	R305115	ET15219	Seal - Roller	2	5.35	
35	R302-5	JD7797, JD7842, JD7844	Fitting - Grease	2	0.27	
36	R150690		Screw - Set 1/4-20 x 1/4	4	0.78	
37	R150651		Spacer - 2-3/8 Roller	34	0.87	
38	R150653		Washer - 2-3/8 Roller	33	1.10	
39	RAA35741	AA35741, AET10129, TCA22836	Bearing	2	18.80	
<i>Tech Note: 1/4" Side Hole:</i>						
40	RET15755	ET15755	Seal - Oil	4	5.15	
41	RET15756	ET15756, MT1739, MT739	Seal	2	5.45	
42	RET17515	ET17515	Shaft - Roller	1	49.45	
43	R237-54	U46731, U6731	O-Ring - Small	2	0.50	
44	R3296-15	N101345	Locknut - 3/4-16 Nylon Jam	2	2.15	
45	RU45916	14M7298, U45916	Locknut - 10-24 ESNA	2	0.32	
46	R254-78	JD8188	Tapered Bearing Cone	2	6.05	
47	R254-79	JD8226	Cup - Bearing	2	3.20	

Tech Note: Use R254-79M installation mandrel to properly install race.:

All original equipment manufacturers names and part numbers are used for identification purposes only, and we are in no way implying that our products are original equipment parts. Prices subject to change without notice.



Replaces John Deere 3215A Reel Mower

Parts

Medium Cutting Unit
Rollers



Item No	R&R Part No.	OEM Part No.	Description	Qty Req	Price Each	Order Quantity
48	RET15726	ET15726, RET15726	Sleeve - Wear Hardened	2	13.95	
49	R150673		Washer - 3 Repairable Roller	11	1.45	
50	R150676		Spacer - 2-3/4 Dia x 1-1/4 L	10	3.75	
51	R500511		Roller End - Threaded 3	2	84.45	
52	R150691		Screw - Set Nyloc 3/8-16 x 3/8	4	1.10	
53	R170714	E14814	Fitting - Pressure Relief	2	2.25	
54	RAET10139	AET10139	Cable - Roller Scraper	1	15.15	
55	R500534		Bearing - with Cup	2	11.80	
56	R500559	BM18680, MT18680	Scraper Kit - Grooved Roller	1	366.50	
<i>Tech Note: Fits John Deere AET11262 & AMT2966 Grooved Roller Only:</i>						
56	R500573		Scraper Kit - SET/5	1	358.75	
<i>Tech Note: Fits R&R R500512 Roller Only & Incl R500572 Scraper:</i>						
57	RET17629	ET17629	Spring - Torsion LH	1	7.05	
58	RET17630	ET17630	Spring - Torsion RH	1	7.05	
59	RET17757	ET11757, ET17757	Pin - Scraper	1	9.75	
60	RMT2340	MT2340	Scraper - Fits J.D. Center	1	9.65	
61	RMT2341	MT2341	Section - Grooved Scraper 4 Tooth	1	5.45	
62	RMT2342	MT2342	Section - Grooved Scraper 3 Tooth	1	5.80	
63	R500571	MT2369	Bar - Scraper	1	32.40	

All original equipment manufacturers names and part numbers are used for identification purposes only, and we are in no way implying that our products are original equipment parts. Prices subject to change without notice.



Replaces John Deere 3215A Reel Mower

Parts

Medium Cutting Unit
Rollers



Item No	R&R Part No.	OEM Part No.	Description	Qty Req	Price Each	Order Quantity
64	RMT2407	MT2407	Bracket - Roller Scraper	2	15.85	
65	RMT5158	MT5158	Scraper - Fits J.D. RH End	1	8.05	
66	RMT5159	MT5159	Scraper - Fits J.D. LH End	1	8.05	
67	R34M7010	34M7010	Pin - Spring	1	0.29	
68	R03M7221	03M7221	Bolt - Carriage M6 x 16	14	0.55	
69	R14M7303	14M7303	Nut - 6mm x 1.0 Flanged	14	0.39	
70	R03M7251	03M7251	Bolt - Gr. Roller Scraper	2	0.78	
71	R500558		Scraper - Grooved Roller	1	31.55	
<i>Tech Note: 1 Piece Scraper fits OEM AET11262 & AMT2966 Grooved Roller:</i>						
71	R500572		Scraper - Fits R500512 Only	1	31.55	
72	R1203821		Shaft - Fusion Roller	1	48.95	
73	R114-3717		Seal	2	2.35	
74	R112-5290		Bearing - Stainless	2	10.30	
75	R112-7494		Seal	4	5.15	
76	R114-3745		Locknut - Bearing - Stainless	2	19.15	

All original equipment manufacturers names and part numbers are used for identification purposes only, and we are in no way implying that our products are original equipment parts. Prices subject to change without notice.