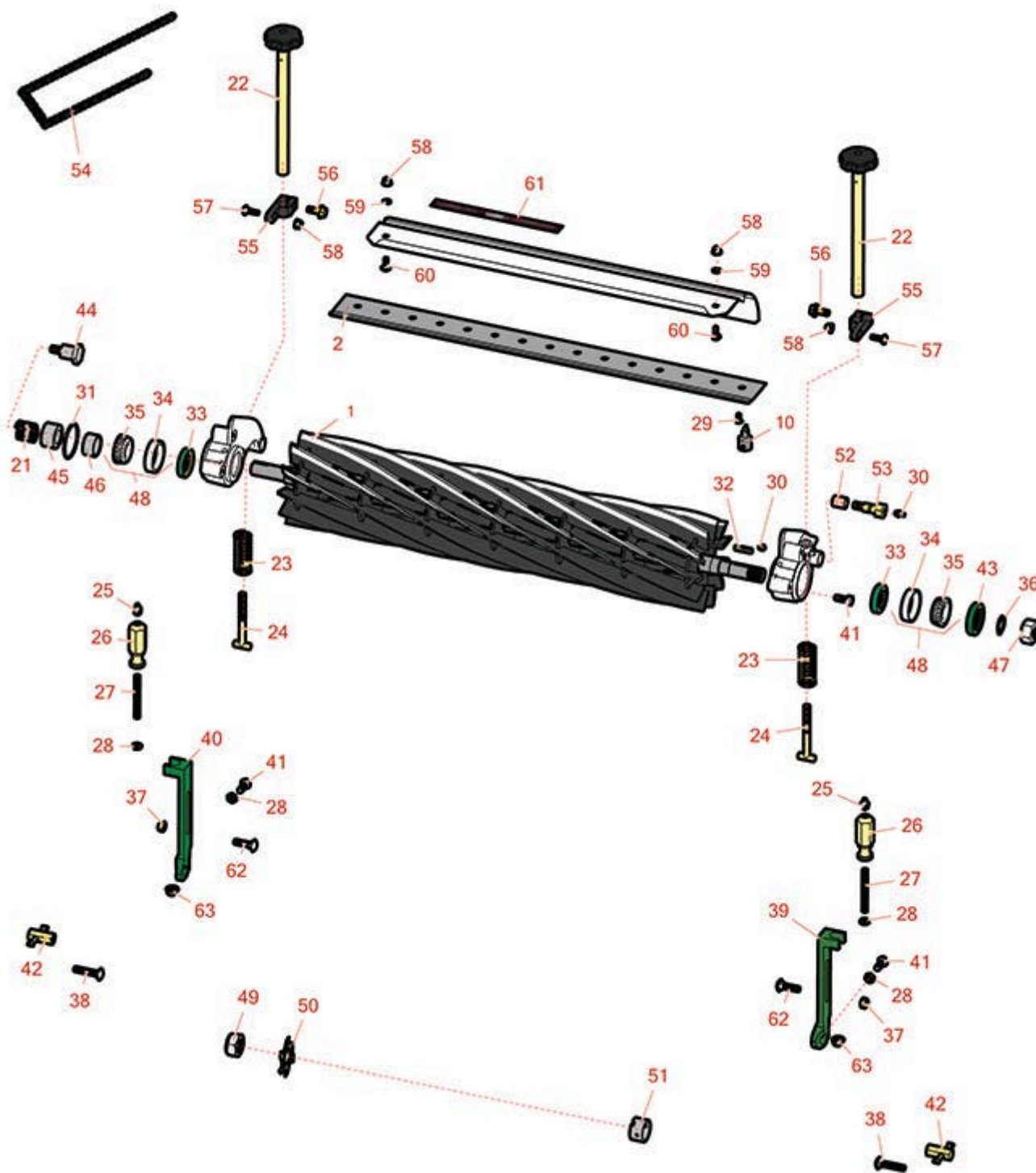




Replaces John Deere 260C Walk-Behind Greens Mower Parts

Cutting Unit
Reel & Bedknife



All original equipment manufacturers names and part numbers are used for identification purposes only, and we are in no way implying that our products are original equipment parts. Prices subject to change without notice.



Replaces John Deere 260C Walk-Behind Greens Mower Parts

Cutting Unit
Reel & Bedknife



Item No	R&R Part No.	OEM Part No.	Description	Qty Req	Price Each	Order Quantity
---------	--------------	--------------	-------------	---------	------------	----------------

R&R Reels, Lifetime Guaranteed

1	RAMT2903	AMT2903	Reel - 7 Blade 26in	1	339.85	
---	-----------------	---------	---------------------	---	---------------	--

Detail Description: R&R Reel blades are manufactured from high carbon-boron alloy steel and then hardened to RC46-49 to match the temper of our bedknives and original equipment bedknives. All R&R Reels are cylindrically ground on bearing surfaces and then relief ground. Reels are then precision computer balanced for extended bearing and reel life. R&R Products Reels are guaranteed against defects in material and workmanship for the life of the reel under normal use.:

1	RAMT2898	AMT2716, AMT2898	Reel - 11 Blade 26in	1	356.15	
---	-----------------	---------------------	----------------------	---	---------------	--

Detail Description: R&R Reel blades are manufactured from high carbon-boron alloy steel and then hardened to RC46-49 to match the temper of our bedknives and original equipment bedknives. All R&R Reels are cylindrically ground on bearing surfaces and then relief ground. Reels are then precision computer balanced for extended bearing and reel life. R&R Products Reels are guaranteed against defects in material and workmanship for the life of the reel under normal use.:

R&R Bedknives, Lifetime Guaranteed

2	RMT6946	MT6946, UC18883	Bedknife - High Cut	1	52.75	
---	----------------	--------------------	---------------------	---	--------------	--

Detail Description: R&R Bedknives are manufactured from high carbon-boron alloy steel and then hardened to RC46-49 to match the temper of our reel blades and original equipment reels. Bedknives are surface ground on the top and front edge and straightened three times before being packaged with oil for rust prevention. All R&R Bedknives now have an increased front edge grind for added life. All R&R Bedknives are guaranteed against defects in material and workmanship under normal use for the life of the part.:

2	RMT6947	MT6947, UC18871	Bedknife - Standard Thin	1	52.75	
---	----------------	--------------------	--------------------------	---	--------------	--

Detail Description: R&R Bedknives are manufactured from high carbon-boron alloy steel and then hardened to RC46-49 to match the temper of our reel blades and original equipment reels. Bedknives are surface ground on the top and front edge and straightened three times before being packaged with oil for rust prevention. All R&R Bedknives now have an increased front edge grind for added life. All R&R Bedknives are guaranteed against defects in material and workmanship under normal use for the life of the part.:

Service Tools and Kits

10	R101278T		Bedknife Screw Driver Tool	1	35.65	
----	-----------------	--	----------------------------	---	--------------	--

All original equipment manufacturers names and part numbers are used for identification purposes only, and we are in no way implying that our products are original equipment parts. Prices subject to change without notice.



Replaces John Deere 260C Walk-Behind Greens Mower Parts

Cutting Unit
Reel & Bedknife



Item No	R&R Part No.	OEM Part No.	Description	Qty Req	Price Each	Order Quantity
---------	--------------	--------------	-------------	---------	------------	----------------

Tech Note: Easily install and remove bed knife screws with the help of a ratchet. Tool manufactured with hardened alloy steel.:

Detail Description: Easily install and remove bed knife screws with the help of a ratchet. Tool manufactured with hardened alloy steel.:

Other Parts Available

21	RET11053	ET11053	Spring - Reel	1	5.45	
22	RAMT2798	AMT2798	Handle - Adjuster	2	22.45	
23	RET11070	ET11070	Spring - Bed Bar	2	7.15	
24	RET11372	ET11372	Bolt - Adjusting Bed Bar	2	9.95	
25	R471219	471219, 471231, JD7759, JD7798	Zerk - Grease	2	0.45	
26	RMT1087	MT1087	Knob - Adjusting Roller	2	21.75	
27	RMT1088	MT1088	Stud - Roller Adj.	2	7.40	
28	R14M7151	14M7151	Nut - Jam Roller Adj	4	0.70	
29	R101278	21M7194	Screw - Bedknife	11	0.41	
30	R302-5	JD7797, JD7842, JD7844	Fitting - Grease	4	0.30	
31	RM44162	M44162	O-Ring - Reel	1	1.25	
32	R49M7049	49M7049	Key - 5mm x 22mm	1	3.55	
33	RMT1160	MT1160	Seal - Reel	2	8.10	
34	RMT2108	MT2108	Tapered Bearing Cup	2	6.80	
35	RAMT1108	AMT1108	Tapered Bearing Cone	2	12.95	

All original equipment manufacturers names and part numbers are used for identification purposes only, and we are in no way implying that our products are original equipment parts. Prices subject to change without notice.



Replaces John Deere 260C Walk-Behind Greens Mower Parts

Cutting Unit
Reel & Bedknife



Item No	R&R Part No.	OEM Part No.	Description	Qty Req	Price Each	Order Quantity
36	R40M7080	40M7080, ET11059	Ring - Snap	1	0.40	
37	R14M7166	14M7166	Locknut - 8mm x 1.25 ESNA	2	0.27	
38	R03M7186	03M7186	Bolt - Carriage 8-1.25 x 30mm	4	1.85	
39	RMT5244	MT5244	Bracket - Roller LH	1	72.05	
40	RMT5245	MT5245	Bracket - Roller RH	1	72.05	
41	R19M7881	19M7881	Bolt - Hex HD M8-1.25 x 20	6	1.30	
41	RA50744	A50744	Screw - 8mm-1.25 x 25 Sq HD	2	1.25	
42	RET11356	ET11356	Nut - Adjusting	2	15.90	
43	RET11073	ET11073	Seal - Reel Outer	1	7.45	
44	RET11367	ET11367	Cap Screw - Special	1	8.05	
45	RET11464	ET11464	Spacer	1	14.95	
46	RET11368	ET11368	Spacer	1	14.95	
47	R14M7306	14M7306	Nut - M20-1.5	1	4.70	
48	R500610	AMT1108	Tapered Bearing Set - Cup and Cone	2	17.90	
<i>Detail Description: Includes:RAMT1108 & RMT2108:</i>						
49	RN198341	N198341	Nut - Nyloc 7/8-14	1	14.30	
50	RET14707	ET14707	Verti-Cut Blade - .025 x 2.375	88	1.70	
50	RET14707C		Verti-Cut Blade - .025 x 2.375 Carbide Tipped	88	6.95	

All original equipment manufacturers names and part numbers are used for identification purposes only, and we are in no way implying that our products are original equipment parts. Prices subject to change without notice.



Replaces John Deere 260C Walk-Behind Greens Mower Parts

*Cutting Unit
Reel & Bedknife*



Item No	R&R Part No.	OEM Part No.	Description	Qty Req	Price Each	Order Quantity
51	RET14917	ET14917	Spacer	1	15.70	
52	RP44946	P44946	Bushing - Bronze	1	4.80	
53	RET11371	ET11371	Screw - Special	1	7.65	
54	RTCA16596	TCA16596	Roller Chain #35	1	20.65	
55	RUC16469	MT6952, UC16469	Clamp	2	37.75	
56	R19M7866	19M7866	Bolt - Flanged Hex M8-1.25 x 20	2	1.95	
57	R03M7222	03M7222	Bolt - Carriage M6-1.0 x 20	2	0.98	
58	R14M7397	14M7397, 14M7463	Locknut - 6mm x 1.0 ESNA Flanged	4	0.58	
59	R24M7139	24M7139	Washer - Flat 6mm	2	0.74	
60	R03M7221	03M7221	Bolt - Carriage M6 x 16	4	0.58	
61	RMT6517	MT6517	Label - Warning	1	7.65	
62	R03M7094	03M7094	Bolt - Carriage M8-1.25 x 30	2	1.25	
63	RE63525	E63525	Nut - Flanged M8-1.25	2	2.45	

All original equipment manufacturers names and part numbers are used for identification purposes only, and we are in no way implying that our products are original equipment parts. Prices subject to change without notice.