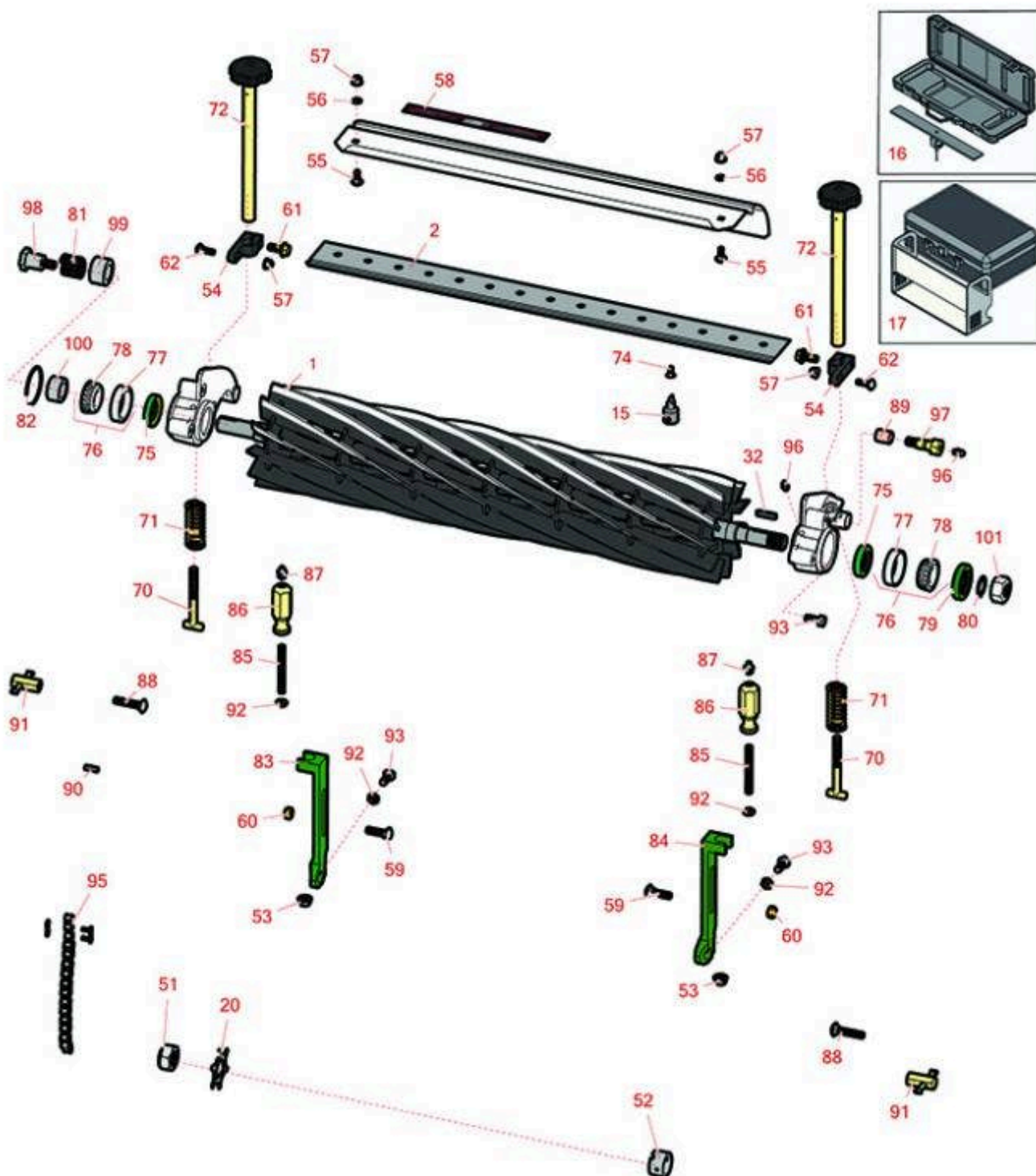




Replaces John Deere 260B Walk-Behind Greens Mower Parts

Cutting Unit
Reel & Bedknife



All original equipment manufacturers names and part numbers are used for identification purposes only, and we are in no way implying that our products are original equipment parts. Prices subject to change without notice.



Replaces John Deere 260B Walk-Behind Greens Mower Parts

Cutting Unit
Reel & Bedknife



Item No	R&R Part No.	OEM Part No.	Description	Qty Req	Price Each	Order Quantity
---------	--------------	--------------	-------------	---------	------------	----------------

R&R Reels, Lifetime Guaranteed

1	RAMT2903	AMT2903	Reel - 7 Blade 26in	1	339.85	
---	-----------------	---------	---------------------	---	---------------	--

Detail Description: R&R Reel blades are manufactured from high carbon-boron alloy steel and then hardened to RC46-49 to match the temper of our bedknives and original equipment bedknives. All R&R Reels are cylindrically ground on bearing surfaces and then relief ground. Reels are then precision computer balanced for extended bearing and reel life. R&R Products Reels are guaranteed against defects in material and workmanship for the life of the reel under normal use.:

1	RAMT2898	AMT2716, AMT2898	Reel - 11 Blade 26in	1	356.15	
---	-----------------	---------------------	----------------------	---	---------------	--

Detail Description: R&R Reel blades are manufactured from high carbon-boron alloy steel and then hardened to RC46-49 to match the temper of our bedknives and original equipment bedknives. All R&R Reels are cylindrically ground on bearing surfaces and then relief ground. Reels are then precision computer balanced for extended bearing and reel life. R&R Products Reels are guaranteed against defects in material and workmanship for the life of the reel under normal use.:

R&R Bedknives, Lifetime Guaranteed

2	RMT6947	MT6947, UC18871	Bedknife - Standard Thin	1	52.75	
---	----------------	--------------------	--------------------------	---	--------------	--

Detail Description: R&R Bedknives are manufactured from high carbon-boron alloy steel and then hardened to RC46-49 to match the temper of our reel blades and original equipment reels. Bedknives are surface ground on the top and front edge and straightened three times before being packaged with oil for rust prevention. All R&R Bedknives now have an increased front edge grind for added life. All R&R Bedknives are guaranteed against defects in material and workmanship under normal use for the life of the part.:

2	RMT6946	MT6946, UC18883	Bedknife - High Cut	1	52.75	
---	----------------	--------------------	---------------------	---	--------------	--

Detail Description: R&R Bedknives are manufactured from high carbon-boron alloy steel and then hardened to RC46-49 to match the temper of our reel blades and original equipment reels. Bedknives are surface ground on the top and front edge and straightened three times before being packaged with oil for rust prevention. All R&R Bedknives now have an increased front edge grind for added life. All R&R Bedknives are guaranteed against defects in material and workmanship under normal use for the life of the part.:

Service Tools

15	R101278T		Bedknife Screw Driver Tool	1	35.65	
----	-----------------	--	----------------------------	---	--------------	--

All original equipment manufacturers names and part numbers are used for identification purposes only, and we are in no way implying that our products are original equipment parts. Prices subject to change without notice.



Replaces John Deere 260B Walk-Behind Greens Mower Parts

Cutting Unit
Reel & Bedknife



Item No	R&R Part No.	OEM Part No.	Description	Qty Req	Price Each	Order Quantity
---------	--------------	--------------	-------------	---------	------------	----------------

Tech Note: Easily install and remove bed knife screws with the help of a ratchet. Tool manufactured with hardened alloy steel.:

Detail Description: Easily install and remove bed knife screws with the help of a ratchet. Tool manufactured with hardened alloy steel.:

16	R184		Masters Gauge - Digital - Inches/Metric	1	185.95	
----	-------------	--	---	---	---------------	--

Detail Description: Accurately measures desired height of cut. Easy to read digital indicator. Displays measurements in decimals and fractions, in English and Metric. 18" length.:

16	R175		Masters Gauge - Inches	1	126.95	
----	-------------	--	------------------------	---	---------------	--

Detail Description: Dial indicator accurately measures desired height of cut. Easy to use. Place the bar on front and rear rollers then push the measuring rod until it touches the bedknife edge. Hard anodized aluminum. Fits all greensmowers. Easy to read dial indicator. Displays measurements in .001" increments. 18" length.:

17	RP508		Turf Evaluation and Height of Cut Prism Tool	1	199.95	
----	--------------	--	--	---	---------------	--

Detail Description: Measure actual turfgrass height of cut, as well as, smoothness and quality of cut, on your greens to 100th of an inch. This impressive Height of Cut Prism Gauge is designed with a solid glass prism in a stainless steel frame. Graduated lines show 1/8th, 1/10th and 1/16th (.002 lines) and 1 mm intervals with grass measurements up to 1-5/8 inches or 40 mm. tall. Complete with protective case. Measures inches and metric.:

Blades

20	RET14707	ET14707	Verti-Cut Blade - .025 x 2.375	88	1.70	
----	-----------------	---------	--------------------------------	----	-------------	--

20	RET14707C		Verti-Cut Blade - .025 x 2.375 Carbide Tipped	88	6.95	
----	------------------	--	---	----	-------------	--

Other Parts Available

51	RN198341	N198341	Nut - Nyloc 7/8-14	1	14.30	
----	-----------------	---------	--------------------	---	--------------	--

52	RET14917	ET14917	Spacer	1	15.70	
----	-----------------	---------	--------	---	--------------	--

53	RE63525	E63525	Nut - Flanged M8-1.25	2	2.45	
----	----------------	--------	-----------------------	---	-------------	--

All original equipment manufacturers names and part numbers are used for identification purposes only, and we are in no way implying that our products are original equipment parts. Prices subject to change without notice.



Replaces John Deere 260B Walk-Behind Greens Mower Parts

Cutting Unit
Reel & Bedknife



Item No	R&R Part No.	OEM Part No.	Description	Qty Req	Price Each	Order Quantity
54	RUC16469	MT6952, UC16469	Clamp	2	37.75	
55	R03M7221	03M7221	Bolt - Carriage M6 x 16	4	0.58	
56	R24M7139	24M7139	Washer - Flat 6mm	4	0.74	
57	R14M7397	14M7397, 14M7463	Locknut - 6mm x 1.0 ESNA Flanged	4	0.58	
58	RMT6517	MT6517	Label - Warning	1	7.65	
59	R03M7094	03M7094	Bolt - Carriage M8-1.25 x 30	2	1.25	
60	R14M7166	14M7166	Locknut - 8mm x 1.25 ESNA	2	0.27	
61	R19M7866	19M7866	Bolt - Flanged Hex M8-1.25 x 20	2	1.95	
62	R03M7222	03M7222	Bolt - Carriage M6-1.0 x 20	2	0.98	
70	RET11372	ET11372	Bolt - Adjusting Bed Bar	2	9.95	
71	RET11070	ET11070	Spring - Bed Bar	2	7.15	
72	RAMT2798	AMT2798	Handle - Adjuster	2	22.45	
74	R101278	21M7194	Screw - Bedknife	15	0.41	
75	RMT1160	MT1160	Seal - Reel	2	8.10	
76	R500610	AMT1108	Tapered Bearing Set - Cup and Cone	2	17.90	
<i>Detail Description: Includes:RAMT1108 & RMT2108:</i>						
77	RMT2108	MT2108	Tapered Bearing Cup	2	6.80	
78	RAMT1108	AMT1108	Tapered Bearing Cone	2	12.95	
79	RET11073	ET11073	Seal - Reel Outer	1	7.45	

All original equipment manufacturers names and part numbers are used for identification purposes only, and we are in no way implying that our products are original equipment parts. Prices subject to change without notice.



Replaces John Deere 260B Walk-Behind Greens Mower Parts

Cutting Unit
Reel & Bedknife



Item No	R&R Part No.	OEM Part No.	Description	Qty Req	Price Each	Order Quantity
80	R40M7080	40M7080, ET11059	Ring - Snap	1	0.40	
81	RET11053	ET11053	Spring - Reel	2	5.45	
82	RM44162	M44162	O-Ring - Reel	1	1.25	
83	RMT5245	MT5245	Bracket - Roller RH	1	72.05	
<i>Tech Note: Also use for vertical cutter.:</i>						
84	RMT5244	MT5244	Bracket - Roller LH	1	72.05	
<i>Tech Note: Also use for vertical cutter.:</i>						
85	RMT1088	MT1088	Stud - Roller Adj.	2	7.40	
<i>Tech Note: Also use for vertical cutter.:</i>						
86	RMT1087	MT1087	Knob - Adjusting Roller	2	21.75	
<i>Tech Note: Also use for vertical cutter.:</i>						
87	R471219	471219, 471231, JD7759, JD7798	Zerk - Grease	2	0.45	
<i>Tech Note: Also use for vertical cutter.:</i>						
88	R03M7186	03M7186	Bolt - Carriage 8-1.25 x 30mm	2	1.85	
89	RP44946	P44946	Bushing - Bronze	2	4.80	
90	RR30587	30587, R30587	Pin - Dowell 1/4 Dia. x .75	4	1.50	
91	RET11356	ET11356	Nut - Adjusting	2	15.90	
92	R14M7151	14M7151	Nut - Jam Roller Adj	2	0.70	
<i>Tech Note: Also use for vertical cutter.:</i>						

All original equipment manufacturers names and part numbers are used for identification purposes only, and we are in no way implying that our products are original equipment parts. Prices subject to change without notice.



Replaces John Deere 260B Walk-Behind Greens Mower Parts

Cutting Unit
Reel & Bedknife



Item No	R&R Part No.	OEM Part No.	Description	Qty Req	Price Each	Order Quantity
93	R19M7881	19M7881	Bolt - Hex HD M8-1.25 x 20	2	1.30	
<i>Tech Note: Also use for vertical cutter.:</i>						
93	RA50744	A50744	Screw - 8mm-1.25 x 25 Sq HD	2	1.25	
94	R49M7049	49M7049	Key - 5mm x 22mm	1	3.55	
95	RTCA16596	TCA16596	Roller Chain #35	1	20.65	
96	R302-5	JD7797, JD7842, JD7844	Fitting - Grease	4	0.30	
97	RET11371	ET11371	Screw - Special	2	7.65	
98	RET11367	ET11367	Cap Screw - Special	1	8.05	
99	RET11464	ET11464	Spacer	1	14.95	
100	RET11368	ET11368	Spacer	1	14.95	
101	R14M7306	14M7306	Nut - M20-1.5	1	4.70	

All original equipment manufacturers names and part numbers are used for identification purposes only, and we are in no way implying that our products are original equipment parts. Prices subject to change without notice.