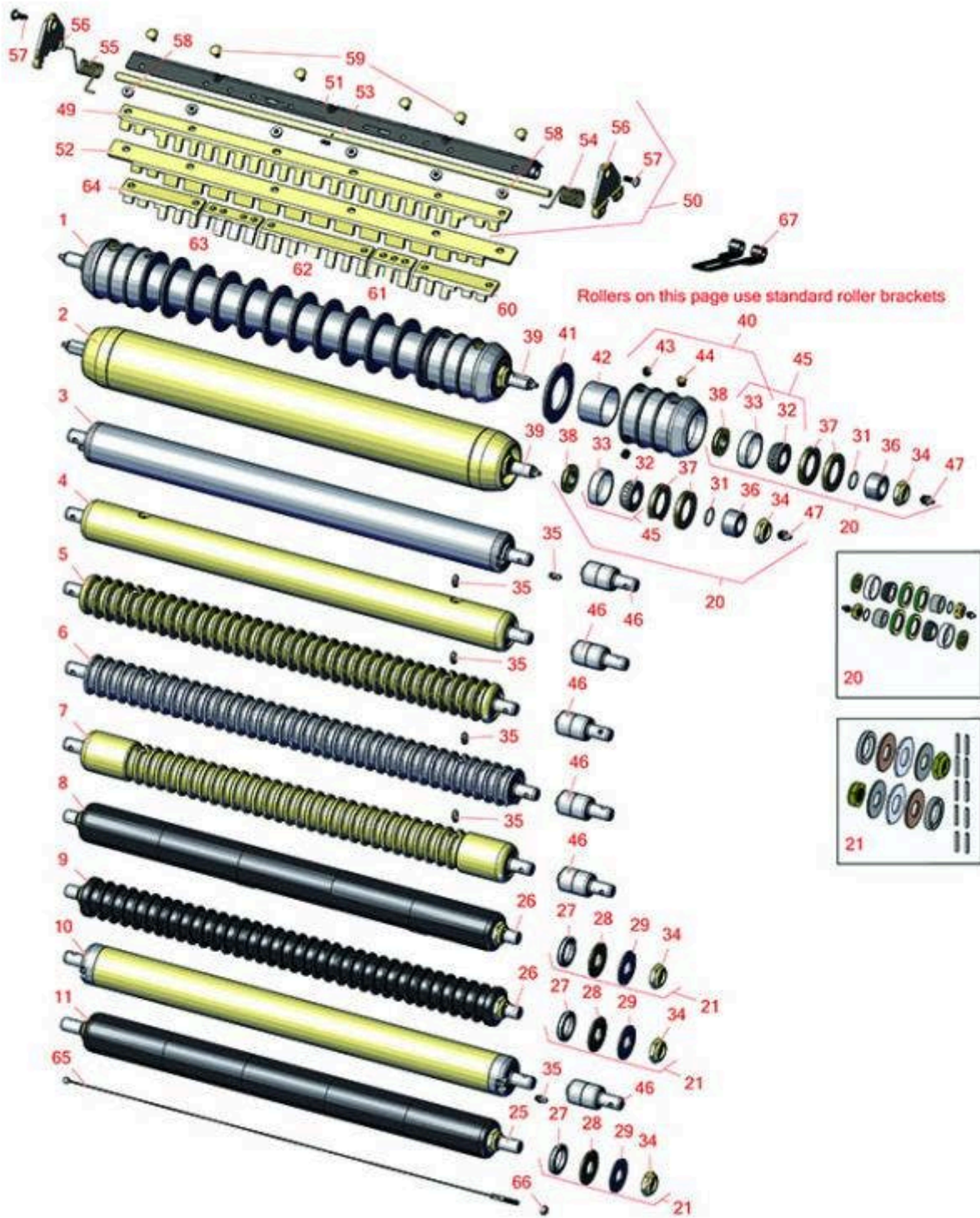




# Replaces John Deere 2500E Hybrid Riding Greens Mower Parts

Cutting Unit - Serial 030001 & up  
Rollers



All original equipment manufacturers names and part numbers are used for identification purposes only, and we are in no way implying that our products are original equipment parts. Prices subject to change without notice.



# Replaces John Deere 2500E Hybrid Riding Greens Mower Parts

Cutting Unit - Serial 030001 & up  
Rollers



Item No	R&R Part No.	OEM Part No.	Description	Qty Req	Price Each	Order Quantity
---------	--------------	--------------	-------------	---------	------------	----------------

## R&R Rollers Available

1	<b>R500512</b>	AMT2966, BM25317	Roller - Grooved Repairable Steel	1	<b>299.90</b>	
---	----------------	---------------------	-----------------------------------	---	---------------	--

*Tech Note: Constructed with a through shaft and greasable ball bearings. This roller can be repaired by unscrewing the ends and replacing the series of washers and spacers.:*

2	<b>RAET11263</b>	AET11263, AMT2967	Roller - Smooth Tubular Steel	1	<b>222.10</b>	
---	------------------	----------------------	-------------------------------	---	---------------	--

*Tech Note: Constructed with a through shaft, this heavy duty roller uses greasable tapered bearings for extended life.:*

3	<b>RAET10111</b>	AET10111, AMT2876	Roller - Smooth Tubular Steel	1	<b>138.30</b>	
---	------------------	----------------------	-------------------------------	---	---------------	--

*Tech Note: This tubular steel roller uses greasable "water-pump" style bearings.:*

4	<b>RAMT1442</b>	AMT1442, AMT2878	Roller - Smooth Solid Steel	1	<b>201.40</b>	
---	-----------------	---------------------	-----------------------------	---	---------------	--

*Tech Note: Machined from solid steel, this heavy weight roller uses greasable "water-pump" style bearings.:*

5	<b>RAET10954</b>	AET10954, AMT2875, AMT2879	Roller - Grooved Machined Solid Steel	1	<b>197.85</b>	
---	------------------	----------------------------------	---------------------------------------	---	---------------	--

*Tech Note: Machined from solid steel, this heavy weight roller uses greasable "water-pump" style bearings.:*

6	<b>RAMT1061</b>	AET10557, AMT1061, AMT2877	Roller - Grooved Machined Solid Steel	1	<b>198.90</b>	
---	-----------------	----------------------------------	---------------------------------------	---	---------------	--

*Tech Note: Machined from solid steel, this heavy weight roller uses greasable "water-pump" style bearings.:*

7	<b>RAMT1443</b>	AMT1443, AMT2879	Roller - Grooved Machined Solid Steel	1	<b>206.90</b>	
---	-----------------	---------------------	---------------------------------------	---	---------------	--

*Tech Note: Machined from solid steel, this heavy weight roller uses greasable "water-pump" style bearings. Extended length body.:*

All original equipment manufacturers names and part numbers are used for identification purposes only, and we are in no way implying that our products are original equipment parts. Prices subject to change without notice.



# Replaces John Deere 2500E Hybrid Riding Greens Mower Parts

Cutting Unit - Serial 030001 & up  
Rollers



Item No	R&R Part No.	OEM Part No.	Description	Qty Req	Price Each	Order Quantity
8	<b>R120255</b>		Roller - Smooth UHMW Polyethylene	1	<b>186.65</b>	
<i>Tech Note: Machined from solid UHMW, this low maintenance roller uses a 1" solid stainless steel shaft and requires no grease. UHMW material prevents build-up of debris.:</i>						
9	<b>R120250</b>		Roller - Grooved UHMW Polyethylene	1	<b>191.90</b>	
<i>Tech Note: Machined from solid UHMW, this low maintenance roller rotates around a 1" solid stainless steel shaft and requires no bearings or grease. Patented groove design and smooth UHMW material prevents build-up of debris.:</i>						
10	<b>RAMT1060</b>	AMT1060	Roller - Smooth Tubular Steel	1	<b>138.30</b>	
<i>Tech Note: This tubular steel roller uses greasable "water-pump" style bearings.:</i>						
11	<b>R120260</b>		Roller - Smooth UHMW Polyethylene	1	<b>186.65</b>	
<i>Tech Note: Machined from solid UHMW, this low maintenance roller uses a 1" solid stainless steel shaft and requires no grease. UHMW material prevents build-up of debris.:</i>						
<b>Overhaul Kit</b>						
20	<b>RAET10632</b>	AET10632	Overhaul Kit - Roller	1	<b>76.55</b>	
<i>Tech Note: Includes 4 ea: RET15755 Seal; 2 ea: R237-54 O-Ring, R253-122 Seal, R254-78 Bearing, R254-79 Cup, R3296-15 Locknut, R471219 Grease Zerk, RET15726 Sleeve, RET15756 Seal:</i>						
21	<b>R101395</b>		Overhaul Kit - UHMW Roller	1	<b>41.15</b>	
<i>Tech Note: Fits all R&amp;R 2" Dia. Black UHMW Polyethylene Rollers. Includes 10 ea.: R150322 Roll Pins; 2 ea.: R3296-15 Locknuts, R150347T Teflon Seals, R150333 Thrust Washers, &amp; R150334A Bronze Thrust Washers:</i>						
<b>Other Parts Available</b>						
25	<b>R120261</b>		Shaft - 1 SS Rear Roller	1	<b>66.85</b>	
26	<b>R120251</b>		Shaft - 1 SS Front Roller	1	<b>66.85</b>	
27	<b>R150347T</b>		Seal - Nonstick Lip	2	<b>6.05</b>	

All original equipment manufacturers names and part numbers are used for identification purposes only, and we are in no way implying that our products are original equipment parts. Prices subject to change without notice.



# Replaces John Deere 2500E Hybrid Riding Greens Mower Parts

Cutting Unit - Serial 030001 & up  
Rollers



Item No	R&R Part No.	OEM Part No.	Description	Qty Req	Price Each	Order Quantity
28	R150334A		Washer - Thrust SAE660 Bronze	2	5.80	
29	R150333		Washer - Flat Keyed Outer SS	2	5.15	
31	R237-54	U46731, U6731	O-Ring - Small	2	0.50	
32	R254-78	JD8188	Tapered Bearing Cone	2	6.05	
33	R254-79	JD8226	Cup - Bearing	2	3.20	
<i>Tech Note: Use R254-79M installation mandrel to properly install race.:</i>						
34	R3296-15	N101345	Locknut - 3/4-16 Nylon Jam	2	2.15	
35	R302-5	JD7797, JD7842, JD7844	Fitting - Grease	2	0.27	
36	RET15726	ET15726, RET15726	Sleeve - Wear Hardened	2	13.95	
37	RET15755	ET15755	Seal - Oil	4	5.15	
38	RET15756	ET15756, MT1739, MT739	Seal	2	5.45	
39	RET17515	ET17515	Shaft - Roller	1	49.45	
40	R500511		Roller End - Threaded 3	2	84.45	
41	R150673		Washer - 3 Repairable Roller	11	1.45	
42	R150676		Spacer - 2-3/4 Dia x 1-1/4 L	10	3.75	
43	R150691		Screw - Set Nyloc 3/8-16 x 3/8	4	1.10	
44	R170714	E14814	Fitting - Pressure Relief	2	2.25	
45	R500534		Bearing - with Cup	2	11.80	

All original equipment manufacturers names and part numbers are used for identification purposes only, and we are in no way implying that our products are original equipment parts. Prices subject to change without notice.



# Replaces John Deere 2500E Hybrid Riding Greens Mower Parts

Cutting Unit - Serial 030001 & up  
Rollers



Item No	R&R Part No.	OEM Part No.	Description	Qty Req	Price Each	Order Quantity
46	<b>RAA35741</b>	AA35741, AET10129, TCA22836	Bearing	2	<b>18.80</b>	
<i>Tech Note: 1/4" Side Hole:</i>						
47	<b>R471219</b>	471219, JD7759, JD7798	Zerk - Grease	2	<b>0.41</b>	
49	<b>R500558</b>		Scrapers - Grooved Roller	1	<b>31.55</b>	
<i>Tech Note: 1 Piece Scrapper fits OEM AET11262 &amp; AMT2966 Grooved Roller:</i>						
50	<b>R500559</b>	BM18680, MT18680	Scrapers Kit - Grooved Roller	1	<b>366.50</b>	
<i>Tech Note: Fits John Deere AET11262 &amp; AMT2966 Grooved Roller Only:</i>						
50	<b>R500573</b>		Scrapers Kit - SET/5	1	<b>358.75</b>	
<i>Tech Note: Fits R&amp;R R500512 Roller Only &amp; Incl R500572 Scrapper:</i>						
51	<b>R500571</b>	MT2369	Bar - Scrapper	1	<b>32.40</b>	
52	<b>R500572</b>		Scrapper - Fits R500512 Only	1	<b>31.55</b>	
53	<b>RET17757</b>	ET11757, ET17757	Pin - Scrapper	1	<b>9.75</b>	
54	<b>RET17629</b>	ET17629	Spring - Torsion LH	1	<b>7.05</b>	
55	<b>RET17630</b>	ET17630	Spring - Torsion RH	1	<b>7.05</b>	
56	<b>RMT2407</b>	MT2407	Bracket - Roller Scrapper	2	<b>15.85</b>	
57	<b>R03M7221</b>	03M7221	Bolt - Carriage M6 x 16	5	<b>0.55</b>	
58	<b>R14M7303</b>	14M7303	Nut - 6mm x 1.0 Flanged	5	<b>0.39</b>	
59	<b>R03M7251</b>	03M7251	Bolt - Gr. Roller Scrapper	5	<b>0.78</b>	
60	<b>RMT5159</b>	MT5159	Scrapper - Fits J.D. LH End	1	<b>8.05</b>	

All original equipment manufacturers names and part numbers are used for identification purposes only, and we are in no way implying that our products are original equipment parts. Prices subject to change without notice.



# Replaces John Deere 2500E Hybrid Riding Greens Mower Parts

*Cutting Unit - Serial 030001 & up  
Rollers*



Item No	R&R Part No.	OEM Part No.	Description	Qty Req	Price Each	Order Quantity
61	<b>RMT2342</b>	MT2342	Section - Grooved Scraper 3 Tooth	2	<b>5.80</b>	
62	<b>RMT2340</b>	MT2340	Scraper - Fits J.D. Center	1	<b>9.65</b>	
63	<b>RMT2341</b>	MT2341	Section - Grooved Scraper 4 Tooth	2	<b>5.45</b>	
64	<b>RMT5158</b>	MT5158	Scraper - Fits J.D. RH End	1	<b>8.05</b>	
65	<b>RTCA19566</b>	TCA19566	Cable - Smooth Roller Scraper	1	<b>13.45</b>	
66	<b>RU45916</b>	14M7298, U45916	Locknut - 10-24 ESNA	2	<b>0.32</b>	
67	<b>RTCUC26998</b>	TCU26998	Panel	2	<b>22.51</b>	

All original equipment manufacturers names and part numbers are used for identification purposes only, and we are in no way implying that our products are original equipment parts. Prices subject to change without notice.