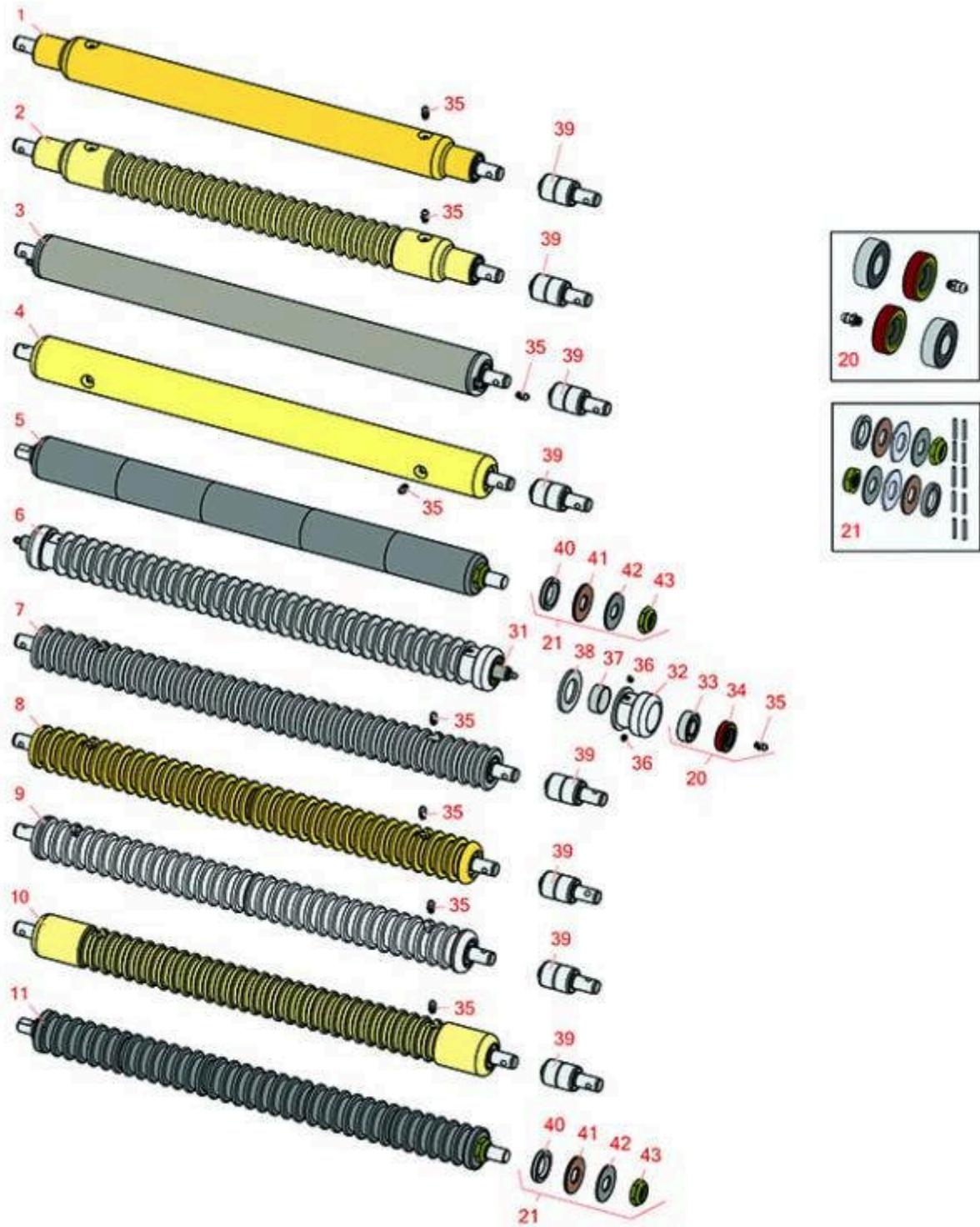




# Replaces John Deere 220 Greens Mower

## Parts

Cutting Unit  
Rollers



All original equipment manufacturers names and part numbers are used for identification purposes only, and we are in no way implying that our products are original equipment parts. Prices subject to change without notice.



# Replaces John Deere 220 Greens Mower

## Parts

Cutting Unit  
Rollers



Item No	R&R Part No.	OEM Part No.	Description	Qty Req	Price Each	Order Quantity
---------	--------------	--------------	-------------	---------	------------	----------------

### R&R Rollers to fit 180A

1	<b>RAMT2318</b>	AMT2318	Roller - Smooth Solid Steel	0	<b>219.60</b>	
---	-----------------	---------	-----------------------------	---	---------------	--

*Tech Note: Machined from solid steel, this heavy weight roller uses greasable "water-pump" style bearings.:*

2	<b>RAMT2305</b>	AMT2305	Roller - Grooved Solid Steel	0	<b>245.85</b>	
---	-----------------	---------	------------------------------	---	---------------	--

*Tech Note: Machined from solid steel, this heavy weight roller uses greasable "water-pump" style bearings.:*

### R&R Rollers to fit 220 & 220A

3	<b>RAET10111</b>	AET10111, AMT2876	Roller - Smooth Tubular Steel	0	<b>138.30</b>	
---	------------------	----------------------	-------------------------------	---	---------------	--

*Tech Note: This tubular steel roller uses greasable "water-pump" style bearings.:*

4	<b>RAMT1442</b>	AMT1442, AMT2878	Roller - Smooth Solid Steel	0	<b>201.40</b>	
---	-----------------	---------------------	-----------------------------	---	---------------	--

*Tech Note: Machined from solid steel, this heavy weight roller uses greasable "water-pump" style bearings.:*

5	<b>R101336</b>		Roller - Smooth UHMW Polyethylene	0	<b>186.65</b>	
---	----------------	--	--------------------------------------	---	---------------	--

*Tech Note: Machined from solid UHMW, this low maintenance roller uses a 1" solid stainless steel shaft and requires no grease. UHMW material prevents build-up of debris.:*

6	<b>R68527R</b>		Roller - Grooved Repairable Steel	0	<b>192.10</b>	
---	----------------	--	--------------------------------------	---	---------------	--

*Tech Note: Constructed with a through shaft and greasable ball bearings, this roller can be repaired by unscrewing the ends and replacing the series of washers and spacers.:*

7	<b>RAMT1061</b>	AET10557, AMT1061, AMT2877	Roller - Grooved Machined Solid Steel	0	<b>198.90</b>	
---	-----------------	----------------------------------	--	---	---------------	--

*Tech Note: Machined from solid steel, this heavy weight roller uses greasable "water-pump" style bearings.:*

All original equipment manufacturers names and part numbers are used for identification purposes only, and we are in no way implying that our products are original equipment parts. Prices subject to change without notice.



# Replaces John Deere 220 Greens Mower

## Parts

Cutting Unit  
Rollers



Item No	R&R Part No.	OEM Part No.	Description	Qty Req	Price Each	Order Quantity
8	<b>RAET10954</b>	AET10954, AMT2875, AMT2879	Roller - Grooved Machined Solid Steel	0	<b>197.85</b>	
<i>Tech Note: Machined from solid steel, this heavy weight roller uses greasable "water-pump" style bearings.:</i>						
9	<b>R500611</b>		Roller - Grooved Machined Solid Aluminum	0	<b>195.65</b>	
<i>Tech Note: Machined from solid aluminum, this light weight roller uses greasable "water-pump" style bearings.:</i>						
10	<b>RAMT1443</b>	AMT1443, AMT2879	Roller - Grooved Machined Solid Steel	0	<b>206.90</b>	
<i>Tech Note: Machined from solid steel, this heavy weight roller uses greasable "water-pump" style bearings. Extended length body.:</i>						
11	<b>R101330</b>		Roller - Grooved UHMW Polyethylene	0	<b>191.90</b>	
<i>Tech Note: Machined from solid UHMW, this low maintenance roller rotates around a 1" solid stainless steel shaft and requires no bearings or grease. Patented groove design and smooth UHMW material prevents build-up of debris.:</i>						
<b>Overhaul Kits</b>						
20	<b>R100130</b>		Overhaul Kit - Roller	1	<b>40.30</b>	
<i>Tech Note: Includes 2 ea.: R302-5 Grease Fittings, R303558 Bearings, &amp; R305115 Seals:</i>						
21	<b>R101395</b>		Overhaul Kit - UHMW Roller	1	<b>41.15</b>	
<i>Tech Note: Fits all R&amp;R 2" Dia. Black UHMW Polyethylene Rollers. Includes 10 ea.: R150322 Roll Pins; 2 ea.: R3296-15 Locknuts, R150347T Teflon Seals, R150333 Thrust Washers, &amp; R150334A Bronze Thrust Washers:</i>						
<b>Other Parts Available</b>						
31	<b>R102030</b>	ET16251	Shaft - Front Roller	1	<b>45.30</b>	
32	<b>R150650</b>		Roller End - 2 Repairable	2	<b>54.25</b>	

All original equipment manufacturers names and part numbers are used for identification purposes only, and we are in no way implying that our products are original equipment parts. Prices subject to change without notice.



# Replaces John Deere 220 Greens Mower

## Parts

Cutting Unit  
Rollers



Item No	R&R Part No.	OEM Part No.	Description	Qty Req	Price Each	Order Quantity
33	<b>R303558</b>	ET15220	Bearing - Roller	2	<b>14.60</b>	
34	<b>R305115</b>	ET15219	Seal - Roller	2	<b>5.35</b>	
35	<b>R302-5</b>	JD7797, JD7842, JD7844	Fitting - Grease	2	<b>0.27</b>	
36	<b>R150690</b>		Screw - Set 1/4-20 x 1/4	4	<b>0.78</b>	
37	<b>R150651</b>		Spacer - 2-3/8 Roller	34	<b>0.87</b>	
38	<b>R150653</b>		Washer - 2-3/8 Roller	0	<b>1.10</b>	
39	<b>RAA35741</b>	AA35741, AET10129, TCA22836	Bearing	2	<b>18.80</b>	
<i>Tech Note: 1/4" Side Hole:</i>						
40	<b>R150347T</b>		Seal - Nonstick Lip	2	<b>6.05</b>	
41	<b>R150334A</b>		Washer - Thrust SAE660 Bronze	2	<b>5.80</b>	
42	<b>R150333</b>		Washer - Flat Keyed Outer SS	2	<b>5.15</b>	
43	<b>R3296-15</b>	N101345	Locknut - 3/4-16 Nylon Jam	2	<b>2.15</b>	

All original equipment manufacturers names and part numbers are used for identification purposes only, and we are in no way implying that our products are original equipment parts. Prices subject to change without notice.