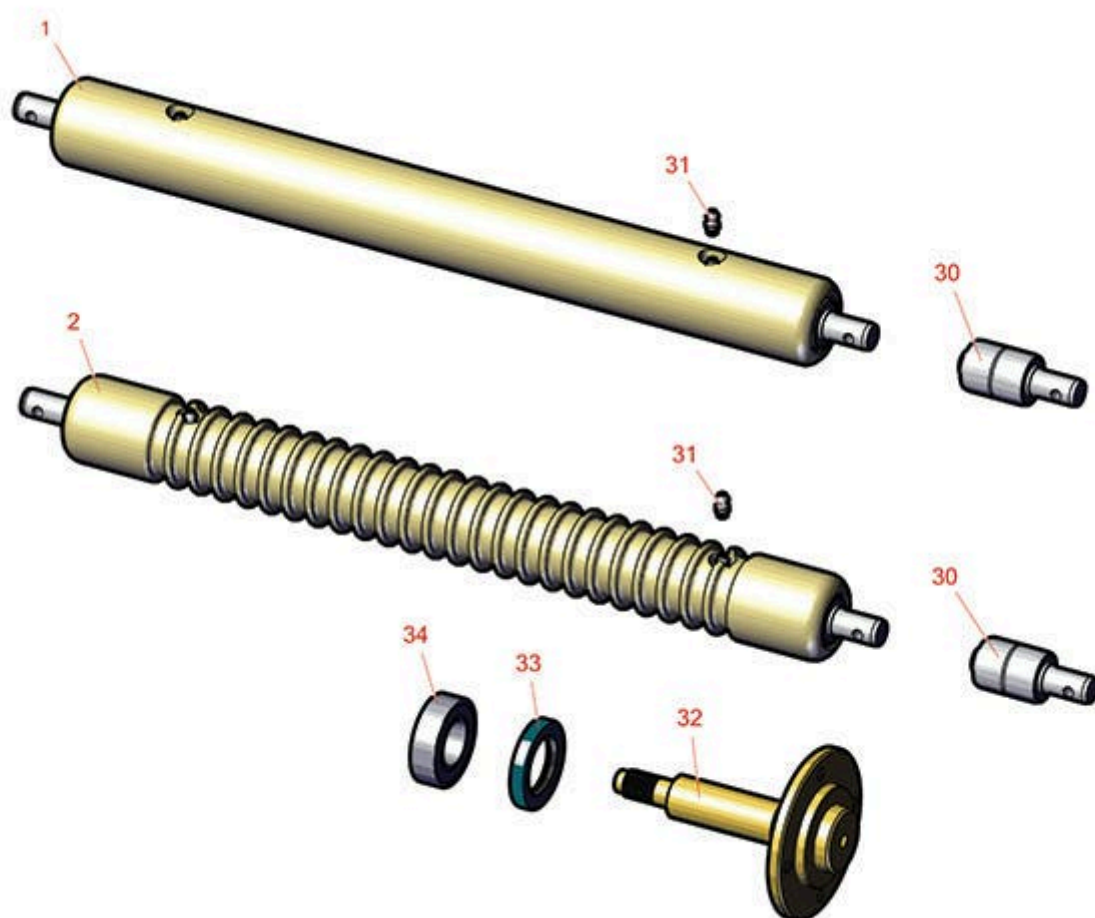




# Replaces John Deere 180C Walk-Behind Greens Mower Parts

*Cutting Unit  
Rollers*



All original equipment manufacturers names and part numbers are used for identification purposes only, and we are in no way implying that our products are original equipment parts. Prices subject to change without notice.



# Replaces John Deere 180C Walk-Behind Greens Mower Parts

Cutting Unit  
Rollers



Item No	R&R Part No.	OEM Part No.	Description	Qty Req	Price Each	Order Quantity
---------	--------------	--------------	-------------	---------	------------	----------------

## R&R Rollers to Fit 180C

1	<b>RAMT2786</b>	AMT2786, AMT2981, BM20561	Roller - Smooth Solid Steel	1	<b>209.30</b>	
---	-----------------	---------------------------------	-----------------------------	---	---------------	--

*Detail Description: Machined from solid steel, this heavy weight roller uses greasable "water-pump" style bearings.:*

2	<b>RAMT2784</b>	AMT2784, AMT2979, BM20562	Roller - Grooved Machined Solid Steel	1	<b>236.65</b>	
---	-----------------	---------------------------------	---------------------------------------	---	---------------	--

*Detail Description: Machined from solid steel, this heavy weight roller uses greasable "water-pump" style bearings.:*

## Other Parts Available

30	<b>RAA35741</b>	AA35741, AET10129, TCA22836	Bearing	2	<b>19.75</b>	
----	-----------------	-----------------------------------	---------	---	--------------	--

*Detail Description: 1/4" Side Hole:*

31	<b>R302-5</b>	JD7797, JD7842, JD7844	Fitting - Grease	2	<b>0.30</b>	
----	---------------	------------------------------	------------------	---	-------------	--

32	<b>RET11081</b>	ET11081	Spindle - Traction Roller	1	<b>166.75</b>	
----	-----------------	---------	---------------------------	---	---------------	--

33	<b>RET10285</b>	ET10285	Seal	2	<b>11.80</b>	
----	-----------------	---------	------	---	--------------	--

34	<b>R345050</b>	AZ20217	Bearing	2	<b>16.90</b>	
----	----------------	---------	---------	---	--------------	--

All original equipment manufacturers names and part numbers are used for identification purposes only, and we are in no way implying that our products are original equipment parts. Prices subject to change without notice.