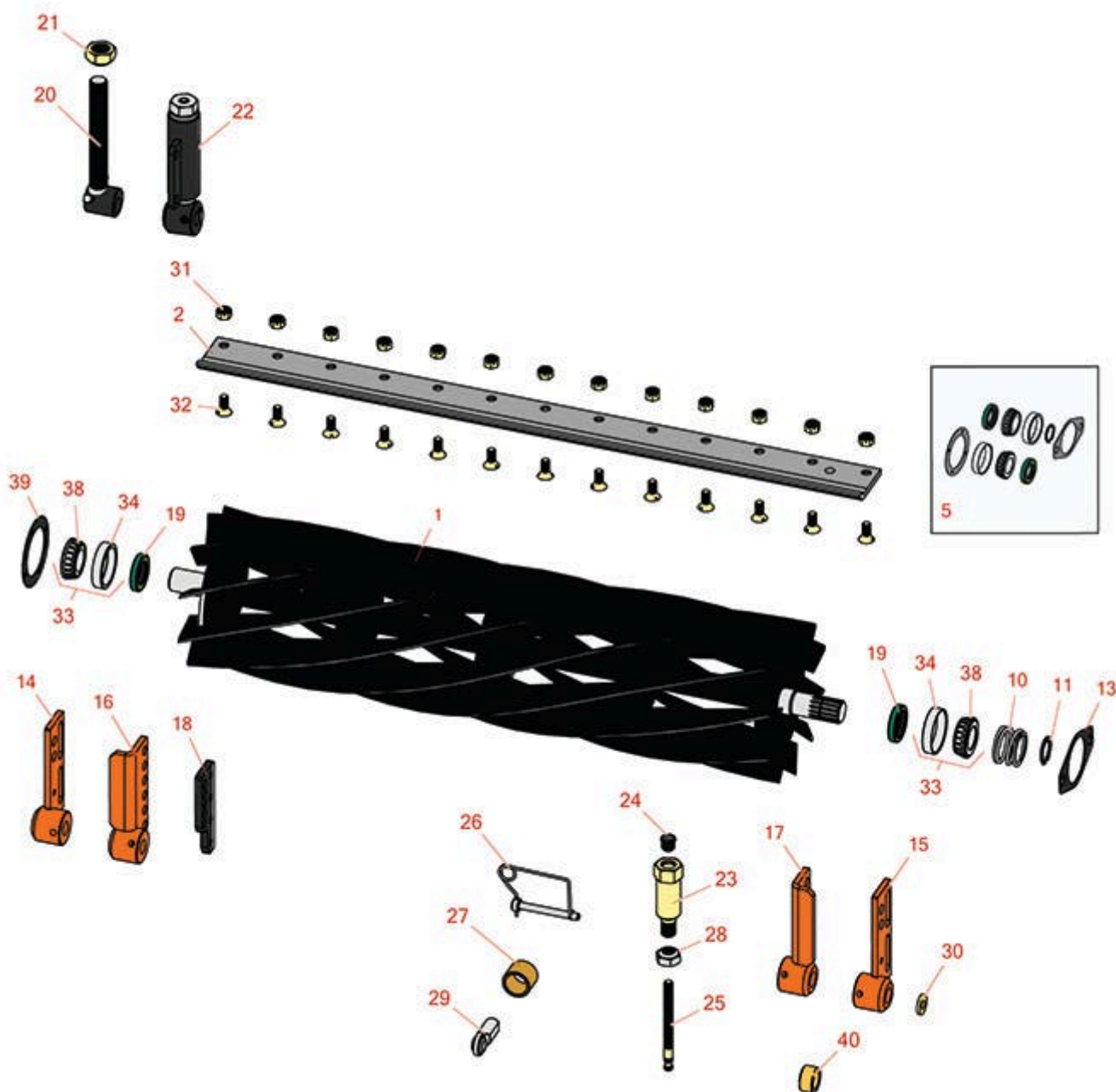




# Replaces Jacobsen Tri-King 1900D Parts

Cutting Unit  
Reel & Bedknife



All original equipment manufacturers names and part numbers are used for identification purposes only, and we are in no way implying that our products are original equipment parts. Prices subject to change without notice.



# Replaces Jacobsen Tri-King 1900D Parts

Cutting Unit  
Reel & Bedknife



Item No	R&R Part No.	OEM Part No.	Description	Qty Req	Price Each	Order Quantity
---------	--------------	--------------	-------------	---------	------------	----------------

## R&R 26" Reels, Lifetime Guaranteed

1	<b>R503274</b>	122547, 503274	Reel - 5 Blade LH 26 in	1	<b>285.25</b>	
---	----------------	-------------------	-------------------------	---	---------------	--

*Detail Description: R&R Reel blades are manufactured from high carbon-boron alloy steel and then hardened to RC46-49 to match the temper of our bedknives and original equipment bedknives. All R&R Reels are cylindrically ground on bearing surfaces and then relief ground. Reels are then precision computer balanced for extended bearing and reel life. R&R Products Reels are guaranteed against defects in material and workmanship for the life of the reel under normal use.:*

1	<b>R503275</b>	122546, 503275	Reel - 5 Blade RH 26 in	1	<b>284.85</b>	
---	----------------	-------------------	-------------------------	---	---------------	--

*Detail Description: R&R Reel blades are manufactured from high carbon-boron alloy steel and then hardened to RC46-49 to match the temper of our bedknives and original equipment bedknives. All R&R Reels are cylindrically ground on bearing surfaces and then relief ground. Reels are then precision computer balanced for extended bearing and reel life. R&R Products Reels are guaranteed against defects in material and workmanship for the life of the reel under normal use.:*

1	<b>R5002088</b>	5002088	Reel - 7 Blade RH 26 in	1	<b>313.75</b>	
---	-----------------	---------	-------------------------	---	---------------	--

*Detail Description: R&R Reel blades are manufactured from high carbon-boron alloy steel and then hardened to RC46-49 to match the temper of our bedknives and original equipment bedknives. All R&R Reels are cylindrically ground on bearing surfaces and then relief ground. Reels are then precision computer balanced for extended bearing and reel life. R&R Products Reels are guaranteed against defects in material and workmanship for the life of the reel under normal use.:*

1	<b>R5002087</b>	5002087	Reel - 7 Blade LH - 26 in	1	<b>313.90</b>	
---	-----------------	---------	---------------------------	---	---------------	--

*Detail Description: R&R Reel blades are manufactured from high carbon-boron alloy steel and then hardened to RC46-49 to match the temper of our bedknives and original equipment bedknives. All R&R Reels are cylindrically ground on bearing surfaces and then relief ground. Reels are then precision computer balanced for extended bearing and reel life. R&R Products Reels are guaranteed against defects in material and workmanship for the life of the reel under normal use.:*

1	<b>R503276</b>	122549, 503276	Reel - 10 Blade LH/Center - 26 in	1	<b>354.55</b>	
---	----------------	-------------------	-----------------------------------	---	---------------	--

All original equipment manufacturers names and part numbers are used for identification purposes only, and we are in no way implying that our products are original equipment parts. Prices subject to change without notice.



# Replaces Jacobsen Tri-King 1900D Parts

Cutting Unit  
Reel & Bedknife



Item No	R&R Part No.	OEM Part No.	Description	Qty Req	Price Each	Order Quantity
---------	--------------	--------------	-------------	---------	------------	----------------

*Detail Description:* R&R Reel blades are manufactured from high carbon-boron alloy steel and then hardened to RC46-49 to match the temper of our bedknives and original equipment bedknives. All R&R Reels are cylindrically ground on bearing surfaces and then relief ground. Reels are then precision computer balanced for extended bearing and reel life. R&R Products Reels are guaranteed against defects in material and workmanship for the life of the reel under normal use.:

1	<b>R503277</b>	122548, 503277	Reel - 10 Blade RH - 26 in	1	<b>354.35</b>	
---	----------------	-------------------	----------------------------	---	---------------	--

*Detail Description:* R&R Reel blades are manufactured from high carbon-boron alloy steel and then hardened to RC46-49 to match the temper of our bedknives and original equipment bedknives. All R&R Reels are cylindrically ground on bearing surfaces and then relief ground. Reels are then precision computer balanced for extended bearing and reel life. R&R Products Reels are guaranteed against defects in material and workmanship for the life of the reel under normal use.:

## R&R 30" Reels, Lifetime Guaranteed

1	<b>R503359</b>	503359	Reel - 5 Blade LH/Center - 30 in	1	<b>323.75</b>	
---	----------------	--------	----------------------------------	---	---------------	--

*Detail Description:* R&R Reel blades are manufactured from high carbon-boron alloy steel and then hardened to RC46-49 to match the temper of our bedknives and original equipment bedknives. All R&R Reels are cylindrically ground on bearing surfaces and then relief ground. Reels are then precision computer balanced for extended bearing and reel life. R&R Products Reels are guaranteed against defects in material and workmanship for the life of the reel under normal use.:

1	<b>R503360</b>	503360	Reel - 5 Blade RH 30 in	1	<b>323.75</b>	
---	----------------	--------	-------------------------	---	---------------	--

*Detail Description:* R&R Reel blades are manufactured from high carbon-boron alloy steel and then hardened to RC46-49 to match the temper of our bedknives and original equipment bedknives. All R&R Reels are cylindrically ground on bearing surfaces and then relief ground. Reels are then precision computer balanced for extended bearing and reel life. R&R Products Reels are guaranteed against defects in material and workmanship for the life of the reel under normal use.:

1	<b>R5002090</b>	5002090	Reel - 7 Blade RH 30 in	1	<b>352.05</b>	
---	-----------------	---------	-------------------------	---	---------------	--

*Detail Description:* R&R Reel blades are manufactured from high carbon-boron alloy steel and then hardened to RC46-49 to match the temper of our bedknives and original equipment bedknives. All R&R Reels are cylindrically ground on bearing surfaces and then relief ground. Reels are then precision computer balanced for extended bearing and reel life. R&R Products Reels are guaranteed against defects in material and workmanship for the life of the reel under normal use.:

All original equipment manufacturers names and part numbers are used for identification purposes only, and we are in no way implying that our products are original equipment parts. Prices subject to change without notice.



# Replaces Jacobsen Tri-King 1900D Parts

Cutting Unit  
Reel & Bedknife



Item No	R&R Part No.	OEM Part No.	Description	Qty Req	Price Each	Order Quantity
---------	--------------	--------------	-------------	---------	------------	----------------

1	<b>R5002089</b>	5002089	Reel - 7 Blade LH - 30 in	1	<b>352.05</b>	
---	-----------------	---------	---------------------------	---	---------------	--

*Detail Description: R&R Reel blades are manufactured from high carbon-boron alloy steel and then hardened to RC46-49 to match the temper of our bedknives and original equipment bedknives. All R&R Reels are cylindrically ground on bearing surfaces and then relief ground. Reels are then precision computer balanced for extended bearing and reel life. R&R Products Reels are guaranteed against defects in material and workmanship for the life of the reel under normal use.:*

1	<b>R503361</b>	503361	Reel - 10 Blade LH/Center - 30 in	1	<b>392.25</b>	
---	----------------	--------	-----------------------------------	---	---------------	--

*Detail Description: R&R Reel blades are manufactured from high carbon-boron alloy steel and then hardened to RC46-49 to match the temper of our bedknives and original equipment bedknives. All R&R Reels are cylindrically ground on bearing surfaces and then relief ground. Reels are then precision computer balanced for extended bearing and reel life. R&R Products Reels are guaranteed against defects in material and workmanship for the life of the reel under normal use.:*

1	<b>R503362</b>	503362	Reel - 10 Blade RH - 30 in	1	<b>392.25</b>	
---	----------------	--------	----------------------------	---	---------------	--

*Detail Description: R&R Reel blades are manufactured from high carbon-boron alloy steel and then hardened to RC46-49 to match the temper of our bedknives and original equipment bedknives. All R&R Reels are cylindrically ground on bearing surfaces and then relief ground. Reels are then precision computer balanced for extended bearing and reel life. R&R Products Reels are guaranteed against defects in material and workmanship for the life of the reel under normal use.:*

## R&R Bedknives, Lifetime Guaranteed

2	<b>R503550</b>	331692, 503363, 503550	Bedknife - 30 in (13 Hole)	1	<b>55.25</b>	
---	----------------	------------------------------	----------------------------	---	--------------	--

*Detail Description: R&R Bedknives are manufactured from high carbon-boron alloy steel and then hardened to RC46-49 to match the temper of our reel blades and original equipment reels. Bedknives are surface ground on the top and front edge and straightened three times before being packaged with oil for rust prevention. All R&R Bedknives now have an increased front edge grind for added life. All R&R Bedknives are guaranteed against defects in material and workmanship under normal use for the life of the part.:*

2	<b>R3000249</b>	3000249, 336419, 554284	Bedknife - 7/16 - 26 Inch	1	<b>49.20</b>	
---	-----------------	-------------------------------	---------------------------	---	--------------	--

## Overhaul Kits & Service Tools

All original equipment manufacturers names and part numbers are used for identification purposes only, and we are in no way implying that our products are original equipment parts. Prices subject to change without notice.



# Replaces Jacobsen Tri-King 1900D Parts

Cutting Unit  
Reel & Bedknife



Item No	R&R Part No.	OEM Part No.	Description	Qty Req	Price Each	Order Quantity
---------	--------------	--------------	-------------	---------	------------	----------------

5	<b>R100132</b>		Overhaul Kit - Cutting Unit	1	<b>43.85</b>	
---	----------------	--	-----------------------------	---	--------------	--

*Detail Description: Includes 2 ea.: R254-72 Bearing Cups, R254-94 Bearing Cones & R337593 Seals; 1 ea.: R364777 Gasket, R364147 Gasket & R458039 Retaining Ring:*

## Other Parts Available

10	<b>R364148</b>	364148	Spring - Reel Brg Tension	1	<b>4.45</b>	
11	<b>R458039</b>	458039	Ring - Retaining	1	<b>1.65</b>	
13	<b>R364777</b>	364777	Gasket - Motor End	1	<b>2.70</b>	
14	<b>R132312</b>	132312	Bracket - Roller RH	1	<b>51.15</b>	
15	<b>R132313</b>	132313	Bracket - Roller LH	1	<b>51.15</b>	
16	<b>R132028</b>	132028	Bracket - Front H.O.C. RH	1	<b>45.55</b>	
17	<b>R132029</b>	132029	Bracket - Front H.O.C. LH	1	<b>45.55</b>	
18	<b>R338859</b>	338859	Plate - Backup Roller Bracket	1	<b>11.90</b>	
19	<b>R337593</b>	3000983, 337593	Seal	2	<b>7.30</b>	
20	<b>R132680</b>	132680	Adjusting - Assy Rear Roller	2	<b>53.05</b>	
21	<b>R3000313</b>	3000313, 366833	Nut - Roller Adjusting	4	<b>3.95</b>	
22	<b>R131879</b>	131879	Bracket Adj Assy - Rear Roller	2	<b>144.15</b>	
23	<b>R3003611</b>	3003611	Handle - Adjusting 3/8-24 Thread	2	<b>47.60</b>	
24	<b>R472519</b>	472519	Plug - Adjusting Handle	2	<b>1.50</b>	
25	<b>R3004189</b>	3004189	Screw - Adjusting Reel 3/8-24 Thd	2	<b>9.20</b>	

All original equipment manufacturers names and part numbers are used for identification purposes only, and we are in no way implying that our products are original equipment parts. Prices subject to change without notice.



# Replaces Jacobsen Tri-King 1900D Parts

Cutting Unit  
Reel & Bedknife



Item No	R&R Part No.	OEM Part No.	Description	Qty Req	Price Each	Order Quantity
26	<b>R3005435</b>	3000924, 3005435	Pin - Quick Release Swivel Hous.	1	<b>6.40</b>	
27	<b>R364140</b>	364140	Bushing	2	<b>10.35</b>	
<i>Tech Note: Pull Frame:</i>						
28	<b>R445718</b>	445718, 445801	Locknut - 5/8-18 All Metal	2	<b>4.35</b>	
29	<b>R366974</b>	366974	Bearing - Rod End	2	<b>22.85</b>	
30	<b>R366653</b>	366653	Spacer	2	<b>4.05</b>	
31	<b>R101271</b>	445684	Nut - Bedknife	13	<b>0.57</b>	
32	<b>R101270</b>	402698, 403757	Screw - Bedknife 3/8-24 x 13/16	13	<b>0.57</b>	
33	<b>R500596</b>	500596	Tapered Bearing Set - Cup and Cone	2	<b>14.65</b>	
34	<b>R254-72</b>	313456	Cup - Bearing	2	<b>4.05</b>	
38	<b>R254-94</b>	313089	Tapered Bearing Cone	2	<b>7.55</b>	
39	<b>R364147</b>	364147	Gasket - Cover	1	<b>2.05</b>	
40	<b>R3005156</b>	3005156	Sleeve - Wear Hardened	2	<b>6.60</b>	

All original equipment manufacturers names and part numbers are used for identification purposes only, and we are in no way implying that our products are original equipment parts. Prices subject to change without notice.