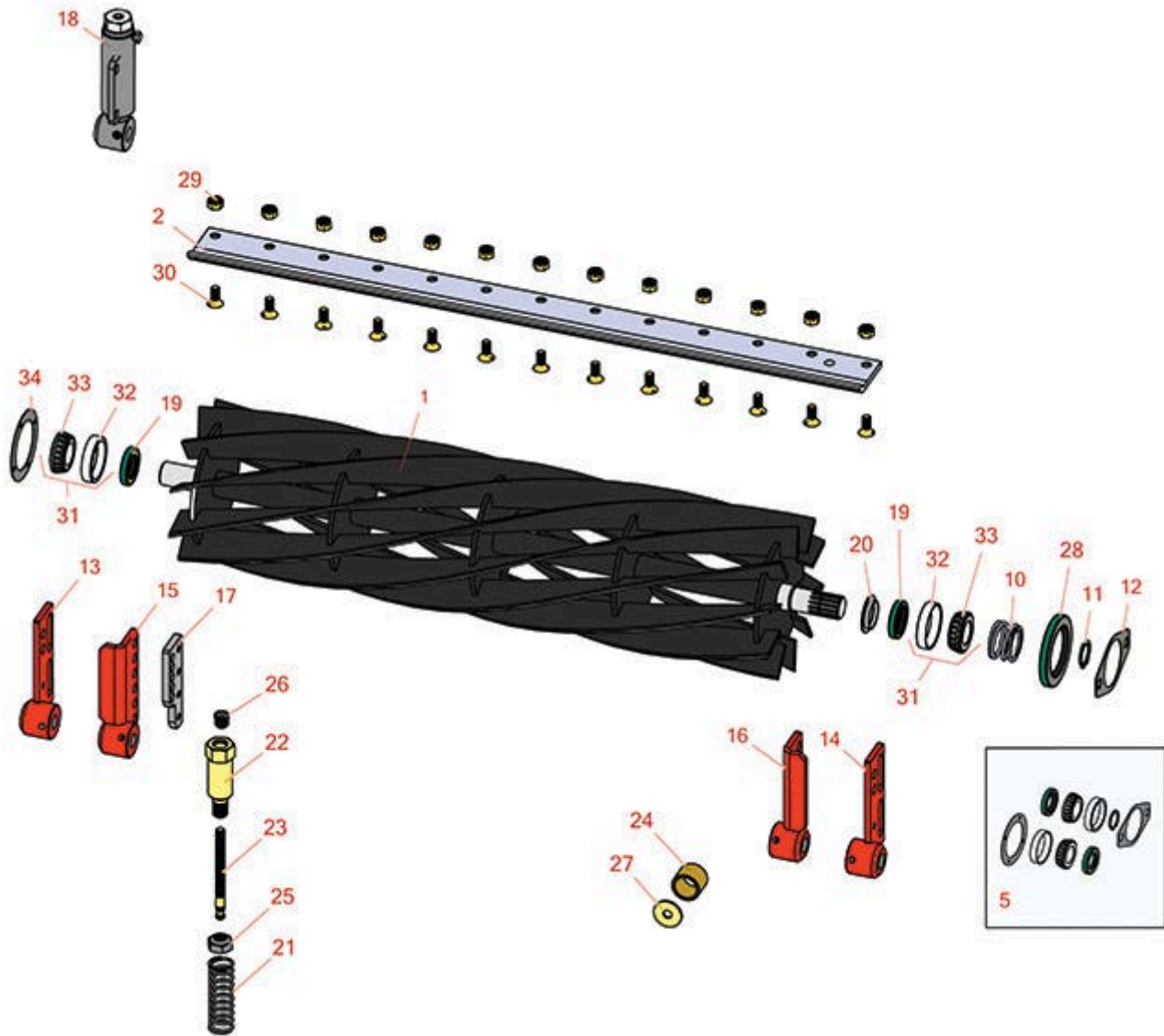




# Replaces Jacobsen Tri-King 1684D Parts

26" & 30" Hydraulic Cutting Unit  
Reel & Bedknife



All original equipment manufacturers names and part numbers are used for identification purposes only, and we are in no way implying that our products are original equipment parts. Prices subject to change without notice.



# Replaces Jacobsen Tri-King 1684D Parts

26" & 30" Hydraulic Cutting Unit  
Reel & Bedknife



Item No	R&R Part No.	OEM Part No.	Description	Qty Req	Price Each	Order Quantity
---------	--------------	--------------	-------------	---------	------------	----------------

## R&R 26" Reels, Lifetime Guaranteed

1	<b>R503274</b>	122547, 503274	Reel - 5 Blade LH 26 in	0	<b>271.65</b>	
---	----------------	-------------------	-------------------------	---	---------------	--

*Tech Note: Note drive motor position when seated in the mower facing forward. This Reel should have the motor on the RIGHT hand side:*

1	<b>R503275</b>	122546, 503275	Reel - 5 Blade RH 26 in	0	<b>271.25</b>	
---	----------------	-------------------	-------------------------	---	---------------	--

*Tech Note: Note drive motor position when seated in the mower facing forward. This Reel should have the motor on the LEFT hand side:*

1	<b>R5002088</b>	5002088	Reel - 7 Blade RH 26 in	0	<b>298.80</b>	
---	-----------------	---------	-------------------------	---	---------------	--

*Tech Note: Note drive motor position when seated in the mower facing forward. This Reel should have the motor on the LEFT hand side:*

1	<b>R5002087</b>	5002087	Reel - 7 Blade LH - 26 in	0	<b>298.95</b>	
---	-----------------	---------	---------------------------	---	---------------	--

*Tech Note: Note drive motor position when seated in the mower facing forward. This Reel should have the motor on the RIGHT hand side:*

1	<b>R503276</b>	122549, 503276	Reel - 10 Blade LH/Center - 26 in	0	<b>337.65</b>	
---	----------------	-------------------	-----------------------------------	---	---------------	--

*Tech Note: Note drive motor position when seated in the mower facing forward. This Reel should have the motor on the RIGHT hand side:*

1	<b>R503277</b>	122548, 503277	Reel - 10 Blade RH - 26 in	0	<b>337.45</b>	
---	----------------	-------------------	----------------------------	---	---------------	--

*Tech Note: Note drive motor position when seated in the mower facing forward. This Reel should have the motor on the LEFT hand side:*

## R&R 30" Reels, Lifetime Guaranteed

1	<b>R503359</b>	503359	Reel - 5 Blade LH/Center - 30 in	0	<b>308.30</b>	
---	----------------	--------	----------------------------------	---	---------------	--

*Tech Note: Note drive motor position when seated in the mower facing forward. This Reel should have the motor on the RIGHT hand side:*

All original equipment manufacturers names and part numbers are used for identification purposes only, and we are in no way implying that our products are original equipment parts. Prices subject to change without notice.



# Replaces Jacobsen Tri-King 1684D Parts

26" & 30" Hydraulic Cutting Unit  
Reel & Bedknife



Item No	R&R Part No.	OEM Part No.	Description	Qty Req	Price Each	Order Quantity
---------	--------------	--------------	-------------	---------	------------	----------------

1	<b>R503360</b>	503360	Reel - 5 Blade RH 30 in	0	<b>308.30</b>	
---	----------------	--------	-------------------------	---	---------------	--

*Tech Note:* Note drive motor position when seated in the mower facing forward. This Reel should have the motor on the LEFT hand side:

1	<b>R5002090</b>	5002090	Reel - 7 Blade RH 30 in	0	<b>335.25</b>	
---	-----------------	---------	-------------------------	---	---------------	--

*Tech Note:* Note drive motor position when seated in the mower facing forward. This Reel should have the motor on the LEFT hand side:

1	<b>R5002089</b>	5002089	Reel - 7 Blade LH - 30 in	0	<b>335.25</b>	
---	-----------------	---------	---------------------------	---	---------------	--

*Tech Note:* Note drive motor position when seated in the mower facing forward. This Reel should have the motor on the RIGHT hand side:

1	<b>R503361</b>	503361	Reel - 10 Blade LH/Center - 30 in	0	<b>373.55</b>	
---	----------------	--------	-----------------------------------	---	---------------	--

*Tech Note:* Note drive motor position when seated in the mower facing forward. This Reel should have the motor on the RIGHT hand side:

1	<b>R503362</b>	503362	Reel - 10 Blade RH - 30 in	0	<b>373.55</b>	
---	----------------	--------	----------------------------	---	---------------	--

*Tech Note:* Note drive motor position when seated in the mower facing forward. This Reel should have the motor on the LEFT hand side:

## R&R Bedknives, Lifetime Guaranteed

2	<b>R3000249</b>	3000249, 336419, 554284	Bedknife - 7/16 - 26 Inch	1	<b>49.20</b>	
---	-----------------	-------------------------------	---------------------------	---	--------------	--

2	<b>R503550</b>	331692, 503363, 503550	Bedknife - 30 in (13 Hole)	1	<b>52.60</b>	
---	----------------	------------------------------	----------------------------	---	--------------	--

*Tech Note:* 1/2 IN HOC:

## Overhaul Kits & Service Tools

5	<b>R100132</b>		Overhaul Kit - Cutting Unit	0	<b>41.75</b>	
---	----------------	--	-----------------------------	---	--------------	--

*Tech Note:* Includes 2 ea.: R254-72 Bearing Cups, R254-94 Bearing Cones & R337593 Seals; 1 ea.: R364777 Gasket, R364147 Gasket & R458039 Retaining Ring:

All original equipment manufacturers names and part numbers are used for identification purposes only, and we are in no way implying that our products are original equipment parts. Prices subject to change without notice.



# Replaces Jacobsen Tri-King 1684D Parts

26" & 30" Hydraulic Cutting Unit  
Reel & Bedknife



Item No	R&R Part No.	OEM Part No.	Description	Qty Req	Price Each	Order Quantity
---------	--------------	--------------	-------------	---------	------------	----------------

## Other Parts Available

10	<b>R364148</b>	364148	Spring - Reel Brg Tension	1	<b>4.20</b>	
11	<b>R458039</b>	458039	Ring - Retaining	1	<b>1.55</b>	
12	<b>R364777</b>	364777	Gasket - Motor End	1	<b>2.55</b>	
13	<b>R132312</b>	132312	Bracket - Roller RH	1	<b>48.70</b>	
14	<b>R132313</b>	132313	Bracket - Roller LH	1	<b>48.70</b>	
15	<b>R132028</b>	132028	Bracket - Front H.O.C. RH	1	<b>43.35</b>	
16	<b>R132029</b>	132029	Bracket - Front H.O.C. LH	1	<b>43.35</b>	
17	<b>R338859</b>	338859	Plate - Backup Roller Bracket	1	<b>11.30</b>	
18	<b>R131879</b>	131879	Bracket Adj Assy - Rear Roller	2	<b>137.25</b>	
19	<b>R337593</b>	3000983, 337593	Seal	2	<b>6.95</b>	
20	<b>R364275</b>	364275	Disc - Reel Shaft	1	<b>3.55</b>	
21	<b>R366973</b>	366973	Spring - Reel Adjusting	2	<b>4.70</b>	
22	<b>R365994</b>	365994	Handle - Adjusting 3/8-16 Thread	2	<b>45.30</b>	
23	<b>R364265</b>	364265	Screw - Adjusting Reel 3/8-16 Thd	2	<b>8.75</b>	
24	<b>R364140</b>	364140	Bushing	2	<b>9.85</b>	
<i>Tech Note: Pull Frame:</i>						
25	<b>R3296-33</b>	444820, 445718, 445801	Locknut - 5/8-18 ESNA Jam	2	<b>1.30</b>	
26	<b>R472519</b>	472519	Plug - Adjusting Handle	2	<b>1.40</b>	

All original equipment manufacturers names and part numbers are used for identification purposes only, and we are in no way implying that our products are original equipment parts. Prices subject to change without notice.



# Replaces Jacobsen Tri-King 1684D Parts

26" & 30" Hydraulic Cutting Unit  
Reel & Bedknife



Item No	R&R Part No.	OEM Part No.	Description	Qty Req	Price Each	Order Quantity
27	<b>R319755</b>	319755	Washer - Spring Mt	1	<b>3.25</b>	
28	<b>R338362</b>	338362	Seal - Oil Reel	1	<b>7.50</b>	
29	<b>R101271</b>	445684	Nut - Bedknife	13	<b>0.54</b>	
30	<b>R101270</b>	402698, 403757	Screw - Bedknife 3/8-24 x 13/16	13	<b>0.54</b>	
31	<b>R500596</b>	500596	Tapered Bearing Set - Cup and Cone	2	<b>13.95</b>	
32	<b>R254-72</b>	313456	Cup - Bearing	2	<b>3.85</b>	
33	<b>R254-94</b>	313089	Tapered Bearing Cone	2	<b>7.15</b>	
34	<b>R364147</b>	364147	Gasket - Cover	1	<b>1.95</b>	

All original equipment manufacturers names and part numbers are used for identification purposes only, and we are in no way implying that our products are original equipment parts. Prices subject to change without notice.