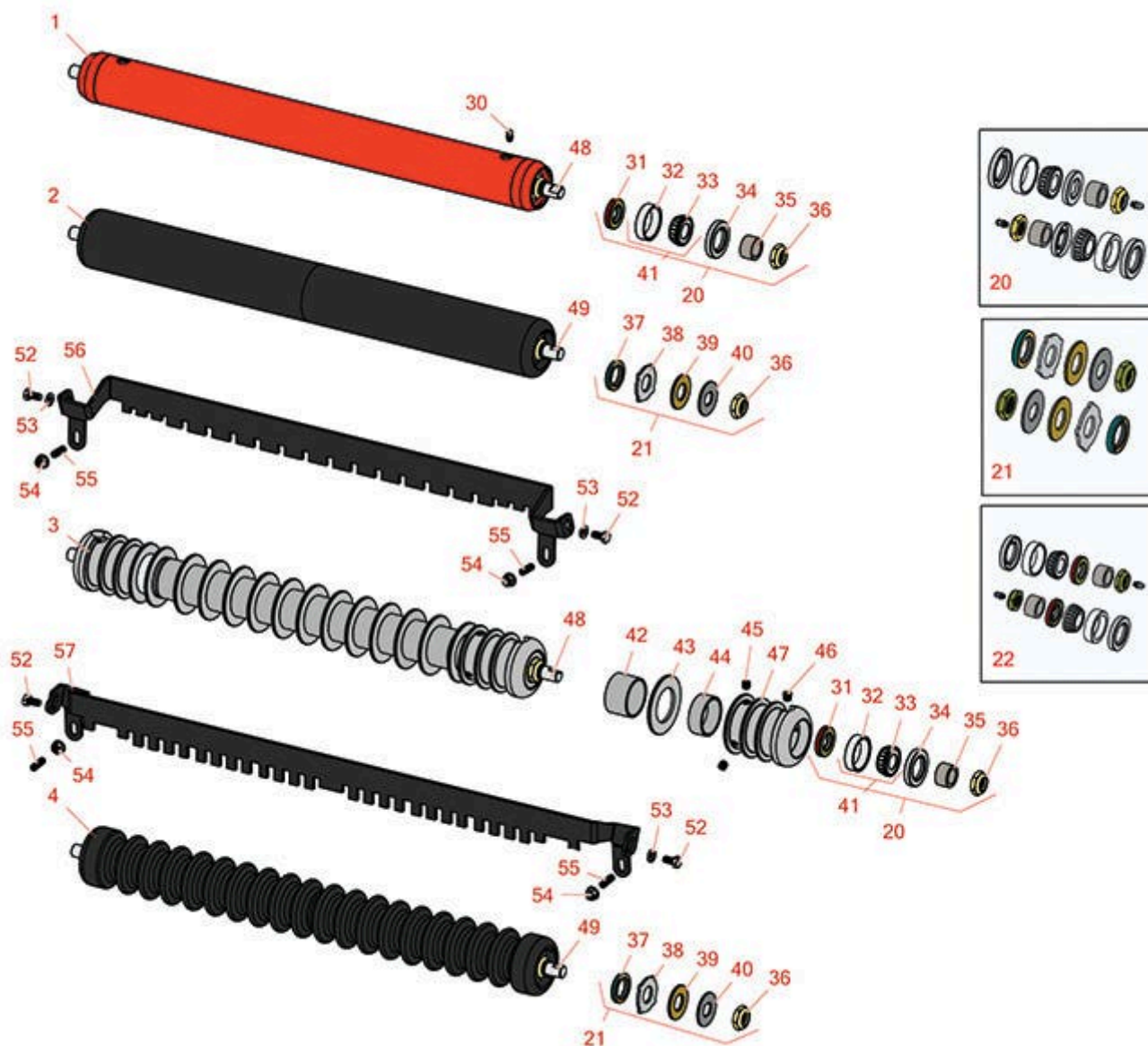




Replaces Jacobsen Tri-King 1671 Parts

26" Belt Drive Cutting Unit
Rollers



All original equipment manufacturers names and part numbers are used for identification purposes only, and we are in no way implying that our products are original equipment parts. Prices subject to change without notice.



Replaces Jacobsen Tri-King 1671 Parts

26" Belt Drive Cutting Unit
Rollers



Item No	R&R Part No.	OEM Part No.	Description	Qty Req	Price Each	Order Quantity
---------	--------------	--------------	-------------	---------	------------	----------------

R&R Rollers

1	R104125	116940, 131863, 132639	Roller - Smooth Tubular Steel	1	211.10	
---	----------------	------------------------------	-------------------------------	---	---------------	--

Tech Note: Fits Front and Rear. Constructed with a through shaft, this heavy duty roller uses greasable tapered bearings for extended life.:

2	R1013630		Roller - Smooth UHMW Polyethylene	1	242.45	
---	-----------------	--	-----------------------------------	---	---------------	--

Tech Note: Fits Front and Rear. Machined from solid UHMW, this low maintenance roller uses a 1" solid stainless steel shaft and requires no grease. UHMW material prevents build-up of debris.:

3	R104100	116906, 123266	Roller - Grooved Repairable Steel - 26	1	301.05	
---	----------------	-------------------	--	---	---------------	--

Tech Note: Fits Front. Constructed with a through shaft and greasable ball bearings, this roller can be repaired by unscrewing the ends and replacing the series of washers and spacers.:

4	R1013620	123266	Roller - Grooved UHMW Polyethylene	1	260.30	
---	-----------------	--------	------------------------------------	---	---------------	--

Tech Note: Fits Front. Machined from solid UHMW, this low maintenance roller rotates around a 1" solid stainless steel shaft and requires no bearings or grease. Patented groove design and smooth UHMW material prevents build-up of debris.:

Overhaul Kits

20	R100137		Overhaul Kit - Roller	0	73.55	
----	----------------	--	-----------------------	---	--------------	--

Tech Note: Includes 2 ea.: R3296-15 Locknuts, R302-5 Grease Fittings, R253-122 Seals, R253-117 Seals, R5-4038 Wear Sleeves, R254-78 Bearings & R254-79 Bearing Cups:

21	R101399		Overhaul Kit - UHMW 2 Pc Roller	1	41.15	
----	----------------	--	---------------------------------	---	--------------	--

Tech Note: Fits all R&R 2-1/2" - 3-1/2" Dia. Black UHMW Plastic Rollers that do not use ball bearings.. Includes 2 ea.: R1503230 Star Washers, R1503470 Seals, R150333 Thrust Washers, R3296-15 Locknuts, R1503471 Bronze Thrust Washers:

22	R100138		Overhaul Kit - Roller	1	71.45	
----	----------------	--	-----------------------	---	--------------	--

All original equipment manufacturers names and part numbers are used for identification purposes only, and we are in no way implying that our products are original equipment parts. Prices subject to change without notice.



Replaces Jacobsen Tri-King 1671 Parts

26" Belt Drive Cutting Unit
Rollers



Item No	R&R Part No.	OEM Part No.	Description	Qty Req	Price Each	Order Quantity
---------	--------------	--------------	-------------	---------	------------	----------------

Tech Note: Includes 2 ea.: R3296-15 Locknuts, R253-152 Seals, R253-117 Seals, R5-4038 Wear Sleeves, R254-78 Bearings, R254-79 Bearing Cups, & R302-5 Grease Fittings:

Other Parts Available

30	R302-5	302-5, 471214, 471223, 471226	Fitting - Grease	4	0.27	
31	R253-122		Seal	2	3.55	
32	R254-79	254-79, 4121175	Cup - Bearing	2	3.20	
<i>Tech Note: Use R254-79M installation mandrel to properly install race.:</i>						
33	R254-78	254-78, 385174, 4121174, 4135152	Tapered Bearing Cone	2	6.05	
34	R253-117	253-117, 3004882	Seal - Outer Triple Lip	2	4.20	
35	R5-4038	5-4038	Sleeve - Wear Reel Shaft	2	11.30	
36	R3296-15	3296-15, 367029, 444742	Locknut - 3/4-16 Nylon Jam	2	2.15	
37	R1503470		Seal - Inner Wiper	2	5.85	
38	R1503230		Washer - Thrust Outer Keyed	2	6.05	
39	R1503471		Washer - Thrust SAE660 Bronze	2	4.20	
40	R150333		Washer - Flat Keyed Outer SS	2	5.15	
41	R500534	500534, R500534	Bearing - with Cup	2	11.80	
42	R150676	150676	Spacer - 2-3/4 Dia x 1-1/4 L	12	3.75	

All original equipment manufacturers names and part numbers are used for identification purposes only, and we are in no way implying that our products are original equipment parts. Prices subject to change without notice.



Replaces Jacobsen Tri-King 1671 Parts

26" Belt Drive Cutting Unit
Rollers



Item No	R&R Part No.	OEM Part No.	Description	Qty Req	Price Each	Order Quantity
43	R150673	150673	Washer - 3 Repairable Roller	13	1.45	
44	R150678		Spacer - Grooved Roller 3/4	2	2.90	
45	R150691		Screw - Set Nyloc 3/8-16 x 3/8	4	1.10	
46	R170714	170714, 471240, 471242	Fitting - Pressure Relief	2	2.25	
47	R100103		Roller End - Grooved	2	84.45	
48	R104102		Shaft - 26 Roller	1	49.80	
49	R1013810		Shaft - 1 SS Roller	1	74.75	
52	R400182	400182	Bolt - Hex HD 5/16-18 x 5/8	2	0.78	
53	R446136	446134, 446136	Washer - Lock 5/16 Zinc	2	0.14	
54	R445781	445781	Nut - 5/16-18 Whiz	2	0.39	
55	R415559	415559	Screw - Set 5/16-18 x 1	2	0.47	
56	R700508		Scraper - 26 Grooved Roller	1	52.55	
<i>Tech Note: Fits R&R Roller Only:</i>						
57	R3001706	3001706	Scraper - 26 Grooved Roller	1	53.05	
<i>Tech Note: Fits O.E.M. Roller Only:</i>						

All original equipment manufacturers names and part numbers are used for identification purposes only, and we are in no way implying that our products are original equipment parts. Prices subject to change without notice.