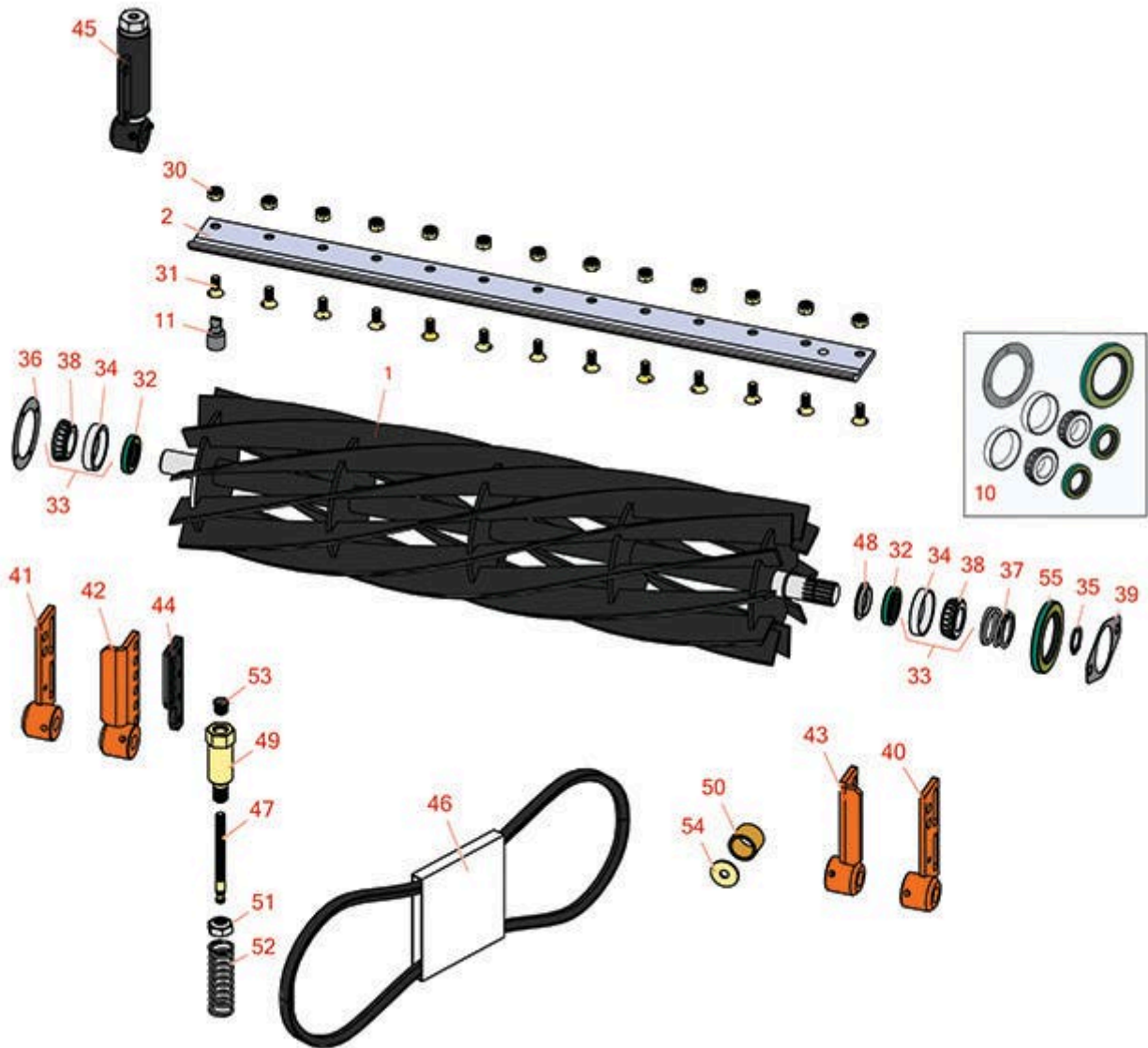




Replaces Jacobsen Tri-King 1670 Parts

Cutting Unit
Reel & Bedknife



All original equipment manufacturers names and part numbers are used for identification purposes only, and we are in no way implying that our products are original equipment parts. Prices subject to change without notice.



Replaces Jacobsen Tri-King 1670 Parts

Cutting Unit
Reel & Bedknife



| Item No | R&R Part No. | OEM Part No. | Description | Qty Req | Price Each | Order Quantity |
|---------|--------------|--------------|-------------|---------|------------|----------------|
|---------|--------------|--------------|-------------|---------|------------|----------------|

R&R Reels, Lifetime Guaranteed

| | | | | | | |
|---|----------------|-------------------|-------------------------|---|---------------|--|
| 1 | R503274 | 122547, 503274 | Reel - 5 Blade LH 26 in | 2 | 271.65 | |
|---|----------------|-------------------|-------------------------|---|---------------|--|

Tech Note: Note drive motor position when seated in the mower facing forward. This Reel should have the motor on the RIGHT hand side:

| | | | | | | |
|---|----------------|-------------------|-------------------------|---|---------------|--|
| 1 | R503275 | 122546, 503275 | Reel - 5 Blade RH 26 in | 1 | 271.25 | |
|---|----------------|-------------------|-------------------------|---|---------------|--|

Tech Note: Note drive motor position when seated in the mower facing forward. This Reel should have the motor on the LEFT hand side:

| | | | | | | |
|---|-----------------|---------|-------------------------|---|---------------|--|
| 1 | R5002088 | 5002088 | Reel - 7 Blade RH 26 in | 2 | 298.80 | |
|---|-----------------|---------|-------------------------|---|---------------|--|

Tech Note: Note drive motor position when seated in the mower facing forward. This Reel should have the motor on the LEFT hand side:

| | | | | | | |
|---|-----------------|---------|---------------------------|---|---------------|--|
| 1 | R5002087 | 5002087 | Reel - 7 Blade LH - 26 in | 1 | 298.95 | |
|---|-----------------|---------|---------------------------|---|---------------|--|

Tech Note: Note drive motor position when seated in the mower facing forward. This Reel should have the motor on the RIGHT hand side:

| | | | | | | |
|---|----------------|-------------------|-----------------------------------|---|---------------|--|
| 1 | R503276 | 122549, 503276 | Reel - 10 Blade LH/Center - 26 in | 2 | 337.65 | |
|---|----------------|-------------------|-----------------------------------|---|---------------|--|

Tech Note: Note drive motor position when seated in the mower facing forward. This Reel should have the motor on the RIGHT hand side:

| | | | | | | |
|---|----------------|-------------------|----------------------------|---|---------------|--|
| 1 | R503277 | 122548, 503277 | Reel - 10 Blade RH - 26 in | 1 | 337.45 | |
|---|----------------|-------------------|----------------------------|---|---------------|--|

Tech Note: Note drive motor position when seated in the mower facing forward. This Reel should have the motor on the LEFT hand side:

R&R Bedknives, Lifetime Guaranteed

| | | | | | | |
|---|-----------------|-------------------------------|---------------------------|---|--------------|--|
| 2 | R3000249 | 3000249, 336419, 554284 | Bedknife - 7/16 - 26 Inch | 3 | 49.20 | |
|---|-----------------|-------------------------------|---------------------------|---|--------------|--|

Overhaul Kits & Service Tools

All original equipment manufacturers names and part numbers are used for identification purposes only, and we are in no way implying that our products are original equipment parts. Prices subject to change without notice.



Replaces Jacobsen Tri-King 1670 Parts

Cutting Unit
Reel & Bedknife



| Item No | R&R Part No. | OEM Part No. | Description | Qty Req | Price Each | Order Quantity |
|---|-----------------|--------------------|---------------------------------------|---------|--------------|----------------|
| 10 | R100131 | | Overhaul Kit - Cutting Unit | 0 | 45.05 | |
| <i>Tech Note: Includes 2 ea.: R254-72 Bearing Cups, R254-94 Bearing Cones, R337593 Seals; 1 ea.: R338362 Seal & R364147 Gasket:</i> | | | | | | |
| 11 | R101272T | | Bedknife Screw Driver Tool | 0 | 35.65 | |
| <i>Tech Note: Easily install and remove bed knife screws with the help of a ratchet. Tool manufactured with hardened alloy steel.:</i> | | | | | | |
| Other Parts Available | | | | | | |
| 30 | R101271 | 445684 | Nut - Bedknife | 11 | 0.54 | |
| 31 | R101270 | 402698, 403757 | Screw - Bedknife 3/8-24 x 13/16 | 11 | 0.54 | |
| 32 | R337593 | 3000983, 337593 | Seal | 2 | 6.95 | |
| 33 | R500596 | 500596 | Tapered Bearing Set - Cup and Cone | 2 | 13.95 | |
| 34 | R254-72 | 313456 | Cup - Bearing | 2 | 3.85 | |
| 35 | R458039 | 458039 | Ring - Retaining | 1 | 1.55 | |
| 36 | R364147 | 364147 | Gasket - Cover | 1 | 1.95 | |
| 37 | R364148 | 364148 | Spring - Reel Brg Tension | 1 | 4.20 | |
| 38 | R254-94 | 313089 | Tapered Bearing Cone | 2 | 7.15 | |
| 39 | R364777 | 364777 | Gasket - Motor End | 1 | 2.55 | |
| 40 | R132313 | 132313 | Bracket - Roller LH | 1 | 48.70 | |
| 41 | R132312 | 132312 | Bracket - Roller RH | 1 | 48.70 | |
| 42 | R132028 | 132028 | Bracket - Front H.O.C. RH | 1 | 43.35 | |
| 43 | R132029 | 132029 | Bracket - Front H.O.C. LH | 1 | 43.35 | |

All original equipment manufacturers names and part numbers are used for identification purposes only, and we are in no way implying that our products are original equipment parts. Prices subject to change without notice.



Replaces Jacobsen Tri-King 1670 Parts

Cutting Unit
Reel & Bedknife



| Item No | R&R Part No. | OEM Part No. | Description | Qty Req | Price Each | Order Quantity |
|-------------------------------|-----------------|------------------------------|-----------------------------------|---------|---------------|----------------|
| 44 | R338859 | 338859 | Plate - Backup Roller Bracket | 2 | 11.30 | |
| 45 | R131879 | 131879 | Bracket Adj Assy - Rear Roller | 2 | 137.25 | |
| 46 | R390704 | 390704 | Belt - Mower | 1 | 19.40 | |
| 47 | R364265 | 364265 | Screw - Adjusting Reel 3/8-16 Thd | 2 | 8.75 | |
| 48 | R364275 | 364275 | Disc - Reel Shaft | 2 | 3.55 | |
| 49 | R365994 | 365994 | Handle - Adjusting 3/8-16 Thread | 2 | 45.30 | |
| 50 | R364140 | 364140 | Bushing | 2 | 9.85 | |
| <i>Tech Note: Pull Frame:</i> | | | | | | |
| 51 | R3296-33 | 444820, 445718, 445801 | Locknut - 5/8-18 ESNA Jam | 2 | 1.30 | |
| 52 | R366973 | 366973 | Spring - Reel Adjusting | 2 | 4.70 | |
| 53 | R472519 | 472519 | Plug - Adjusting Handle | 2 | 1.40 | |
| 54 | R319755 | 319755 | Washer - Spring Mt | 1 | 3.25 | |
| 55 | R338362 | 338362 | Seal - Oil Reel | 1 | 7.50 | |

All original equipment manufacturers names and part numbers are used for identification purposes only, and we are in no way implying that our products are original equipment parts. Prices subject to change without notice.