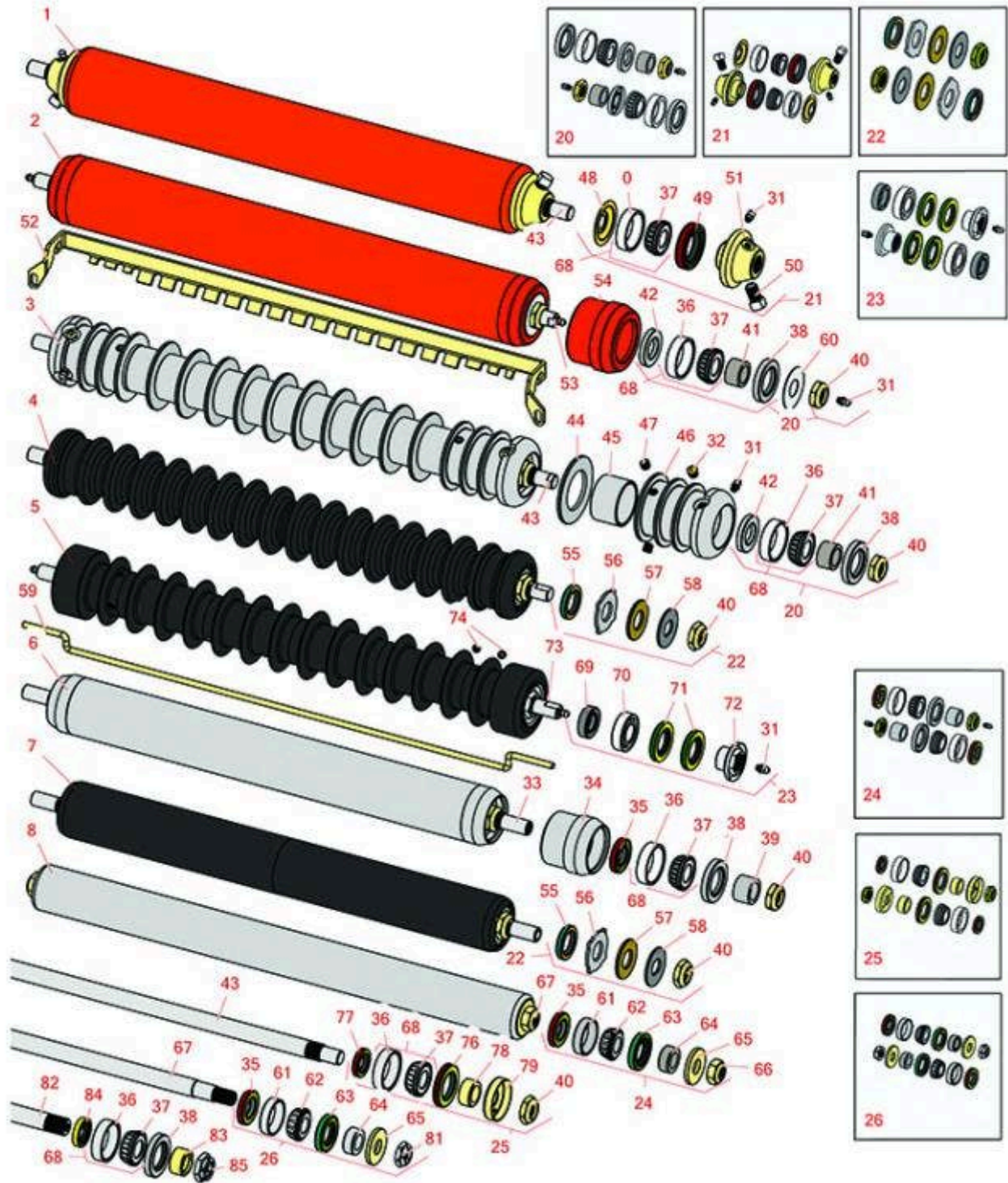




Replaces Jacobsen LF-570 Parts

7" Cutting Unit
Rollers



All original equipment manufacturers names and part numbers are used for identification purposes only, and we are in no way implying that our products are original equipment parts. Prices subject to change without notice.



Replaces Jacobsen LF-570 Parts

7" Cutting Unit
Rollers



| Item No | R&R Part No. | OEM Part No. | Description | Qty Req | Price Each | Order Quantity |
|---------|--------------|--------------|-------------|---------|------------|----------------|
|---------|--------------|--------------|-------------|---------|------------|----------------|

R&R Front Rollers

| | | | | | | |
|---|----------------|--------|-------------------------------|---|---------------|--|
| 1 | R700530 | 132202 | Roller - Smooth Tubular Steel | 0 | 200.30 | |
|---|----------------|--------|-------------------------------|---|---------------|--|

Tech Note: Constructed with a through shaft, this heavy-duty roller uses greasable tapered bearings for extended life.:

| | | | | | | |
|---|----------------|--|-------------------------------|---|---------------|--|
| 2 | R700535 | | Roller - Smooth Tubular Steel | 0 | 206.20 | |
|---|----------------|--|-------------------------------|---|---------------|--|

Tech Note: Constructed with a through shaft, this heavy duty roller uses greasable tapered bearings for extended life.:

| | | | | | | |
|---|----------------|--------|-----------------------------------|---|---------------|--|
| 3 | R100100 | 123268 | Roller - Grooved Repairable Steel | 0 | 301.85 | |
|---|----------------|--------|-----------------------------------|---|---------------|--|

Tech Note: Constructed with a through shaft and greasable ball bearings, this roller can be repaired by unscrewing the ends and replacing the series of washers and spacers.:

| | | | | | | |
|---|-----------------|--|------------------------------------|---|---------------|--|
| 4 | R1013602 | | Roller - Grooved UHMW Polyethylene | 0 | 249.40 | |
|---|-----------------|--|------------------------------------|---|---------------|--|

Tech Note: Machined from solid UHMW, this low maintenance roller rotates around a 1" solid stainless steel shaft and requires no bearings or grease. Patented groove design and smooth UHMW material prevents build-up of debris.:

| | | | | | | |
|---|-----------------|--|------------------------------------|---|---------------|--|
| 5 | R1013670 | | Roller - Grooved UHMW Polyethylene | 0 | 293.35 | |
|---|-----------------|--|------------------------------------|---|---------------|--|

Tech Note: Machined from solid UHMW plastic that prevents build-up of debris. This roller has a patented deep groove design and turns on precision stainless ball bearings.:

R&R Rear Rollers

| | | | | | | |
|---|----------------|--------------------------------|--|---|---------------|--|
| 6 | R100105 | 100105, 1002446, 1003728 | Roller - Smooth Heavy Duty Tubular Steel | 0 | 196.55 | |
|---|----------------|--------------------------------|--|---|---------------|--|

Tech Note: Constructed with a through shaft, this heavy duty roller uses tapered bearings for extended life. This roller body measures 21" in length.:

| | | | | | | |
|---|-----------------|--|-----------------------------------|---|---------------|--|
| 7 | R1013662 | | Roller - Smooth UHMW Polyethylene | 0 | 231.55 | |
|---|-----------------|--|-----------------------------------|---|---------------|--|

Tech Note: Machined from solid UHMW, this low maintenance roller uses a 1" solid stainless steel shaft and requires no grease. UHMW material prevents build-up of debris.:

All original equipment manufacturers names and part numbers are used for identification purposes only, and we are in no way implying that our products are original equipment parts. Prices subject to change without notice.



Replaces Jacobsen LF-570 Parts

7" Cutting Unit
Rollers



| Item No | R&R Part No. | OEM Part No. | Description | Qty Req | Price Each | Order Quantity |
|---------|--------------|--------------|-------------|---------|------------|----------------|
|---------|--------------|--------------|-------------|---------|------------|----------------|

| | | | | | | |
|---|-----------------|---------|--|---|---------------|--|
| 8 | R1000770 | 1000770 | Roller - Smooth Heavy Duty Tubular Steel | 0 | 233.10 | |
|---|-----------------|---------|--|---|---------------|--|

Tech Note: Constructed with a through shaft, this heavy-duty roller uses tapered bearings for extended life. Body length measures 23-1/4".:

Overhaul Kits

| | | | | | | |
|----|----------------|--|-----------------------|---|--------------|--|
| 20 | R100137 | | Overhaul Kit - Roller | 1 | 73.55 | |
|----|----------------|--|-----------------------|---|--------------|--|

Tech Note: Includes 2 ea.: R3296-15 Locknuts, R302-5 Grease Fittings, R253-122 Seals, R253-117 Seals, R5-4038 Wear Sleeves, R254-78 Bearings & R254-79 Bearing Cups:

| | | | | | | |
|----|----------------|--|-------------------------|---|---------------|--|
| 21 | R700505 | | Conversion Kit - Roller | 1 | 127.40 | |
|----|----------------|--|-------------------------|---|---------------|--|

Tech Note: Includes: 2 each: R254-78 Bearing Cones, R254-79 Bearing Cups, R328062 Seals, R412063 Square Head Set Screws, R700501 Roller Ends & R700502 Grease Retainers.:

| | | | | | | |
|----|----------------|--|---------------------------------|---|--------------|--|
| 22 | R101399 | | Overhaul Kit - UHMW 2 Pc Roller | 1 | 41.15 | |
|----|----------------|--|---------------------------------|---|--------------|--|

Tech Note: Fits all R&R 2-1/2" - 3-1/2" Dia. Black UHMW Plastic Rollers that do not use ball bearings.. Includes 2 ea.: R1503230 Star Washers, R1503470 Seals, R150333 Thrust Washers, R3296-15 Locknuts, R1503471 Bronze Thrust Washers:

| | | | | | | |
|----|------------------|----------|-----------------------|---|--------------|--|
| 23 | R114-5430 | 114-5430 | Overhaul Kit - Roller | 1 | 82.40 | |
|----|------------------|----------|-----------------------|---|--------------|--|

Tech Note: Includes 4 ea.: R112-7494 Seals; 2 ea.: R302-5 Grease Zerks, R114-3717 Seals, R112-5290 Bearings & R114-3745 Locknuts:

| | | | | | | |
|----|----------------|--|-----------------------|---|--------------|--|
| 24 | R100136 | | Overhaul Kit - Roller | 1 | 70.70 | |
|----|----------------|--|-----------------------|---|--------------|--|

Tech Note: Includes 2 ea.: R150674 Wear Sleeves, R253-152 Seals, R253-117 Seals, R254-78 Bearings, R254-79 Bearing Cups, R3296-15 Locknuts & R302-5 Grease Fittings:

| | | | | | | |
|----|----------------|--|-----------------------|---|--------------|--|
| 25 | R100133 | | Overhaul Kit - Roller | 1 | 69.75 | |
|----|----------------|--|-----------------------|---|--------------|--|

Tech Note: Includes: 2ea: R254-78 Bearings, R254-79 Bearing Cups, R3296-15 Locknuts, R338645 Cup Deflectors, R338646 Seals, R338647 Seals, & R366168 Wear Sleeves:

| | | | | | | |
|----|----------------|--|-----------------------|---|--------------|--|
| 26 | R100139 | | Overhaul Kit - Roller | 1 | 75.85 | |
|----|----------------|--|-----------------------|---|--------------|--|

Tech Note: Includes 2 ea.: R254-67 Bearing Cups, R254-68 Bearing Cones, R337593 Seals, R253-152 Seals R3001762 Wear Sleeves, R3000698 Washers & R445718 Locknuts:

Other Parts Available

All original equipment manufacturers names and part numbers are used for identification purposes only, and we are in no way implying that our products are original equipment parts. Prices subject to change without notice.



Replaces Jacobsen LF-570 Parts

7" Cutting Unit
Rollers



| Item No | R&R Part No. | OEM Part No. | Description | Qty Req | Price Each | Order Quantity |
|--|-----------------|---|------------------------------|---------|--------------|----------------|
| 31 | R302-5 | 302-5, 471214, 471223, 471226 | Fitting - Grease | 2 | 0.27 | |
| 32 | R170714 | 170714, 471240, 471242 | Fitting - Pressure Relief | 2 | 2.25 | |
| 33 | R100106 | 100106 | Shaft - Fits HD Rear Roller | 1 | 47.55 | |
| 34 | R61-0380 | | Roller End - Cap Solid | 1 | 46.15 | |
| 35 | R253-152 | 3001656 | Seal - Inner Roller | 2 | 3.55 | |
| 36 | R254-79 | 254-79, 4121175 | Cup - Bearing | 2 | 3.20 | |
| <i>Tech Note: Use R254-79M installation mandrel to properly install race.:</i> | | | | | | |
| 37 | R254-78 | 254-78, 385174, 4121174, 4135152 | Tapered Bearing Cone | 2 | 6.05 | |
| 38 | R253-117 | 253-117, 3004882 | Seal - Outer Triple Lip | 2 | 4.20 | |
| 39 | R150674 | 150674 | Sleeve - Wear 3/4 Plated | 2 | 12.95 | |
| 40 | R3296-15 | 3296-15, 367029, 444742 | Locknut - 3/4-16 Nylon Jam | 2 | 2.15 | |
| 41 | R5-4038 | 5-4038 | Sleeve - Wear Reel Shaft | 2 | 11.30 | |
| 42 | R253-122 | | Seal | 2 | 3.55 | |
| 43 | R100102 | 3003416, 366589 | Shaft - Roller | 1 | 47.65 | |
| 44 | R150673 | 150673 | Washer - 3 Repairable Roller | 11 | 1.45 | |
| 45 | R150676 | 150676 | Spacer - 2-3/4 Dia x 1-1/4 L | 0 | 3.75 | |
| 46 | R100103 | | Roller End - Grooved | 2 | 84.45 | |

All original equipment manufacturers names and part numbers are used for identification purposes only, and we are in no way implying that our products are original equipment parts. Prices subject to change without notice.



Replaces Jacobsen LF-570 Parts

7" Cutting Unit
Rollers



| Item No | R&R Part No. | OEM Part No. | Description | Qty Req | Price Each | Order Quantity |
|--|-----------------|-------------------------------|----------------------------------|---------|--------------|----------------|
| 47 | R150691 | | Screw - Set Nyloc 3/8-16 x 3/8 | 4 | 1.10 | |
| 48 | R700502 | 700502 | Retainer - Grease | 2 | 2.35 | |
| 49 | R328062 | 328062 | Seal - Roller | 2 | 4.70 | |
| 50 | R412063 | 412063 | Screw - Sq. HD. Set | 2 | 1.25 | |
| 51 | R700501 | 700501 | Roller End - Regreasable | 2 | 51.65 | |
| 52 | R100110 | 100110, 391202 | Scraper - Fits R100100 | 1 | 40.40 | |
| <i>Tech Note: Fits R100100 3" Grooved Roller - 1-1/4" Spacing:</i> | | | | | | |
| 52 | R391202 | 391202 | Scraper - Fits OEM Roller | 1 | 40.40 | |
| 53 | R700538 | 700538 | Shaft - Fits R700535 | 1 | 47.65 | |
| 54 | R170308 | | Roller End - Solid 3 | 2 | 50.20 | |
| 55 | R1503470 | | Seal - Inner Wiper | 2 | 5.85 | |
| 56 | R1503230 | | Washer - Thrust Outer Keyed | 2 | 6.05 | |
| 57 | R1503471 | | Washer - Thrust SAE660 Bronze | 2 | 4.20 | |
| 58 | R150333 | | Washer - Flat Keyed Outer SS | 2 | 5.15 | |
| 59 | R3005316 | 3005316 | Scraper - 24 Rear Roller (Rod) | 1 | 9.80 | |
| 59 | R3009280 | 3009280 | Scraper - 22 Rear Roller (Rod) | 1 | 9.70 | |
| 60 | R150504 | 150504 | Washer | 1 | 2.35 | |
| 61 | R254-67 | 307108, 5000625, 500625 | Cup - Bearing | 2 | 4.20 | |
| 62 | R254-68 | 307109, 5000625, 500625 | Tapered Bearing Cone | 2 | 7.25 | |

All original equipment manufacturers names and part numbers are used for identification purposes only, and we are in no way implying that our products are original equipment parts. Prices subject to change without notice.



Replaces Jacobsen LF-570 Parts

7" Cutting Unit
Rollers



| Item No | R&R Part No. | OEM Part No. | Description | Qty Req | Price Each | Order Quantity |
|---------|------------------|------------------------------|-------------------------------|---------|--------------|----------------|
| 63 | R337593 | 3000983, 337593 | Seal | 2 | 6.95 | |
| 64 | R3001762 | 30001762, 3001762 | Sleeve - Wear Hardened | 2 | 6.75 | |
| 65 | R3000698 | 3000698 | Washer | 2 | 3.85 | |
| 66 | R3296-33 | 444820, 445718, 445801 | Locknut - 5/8-18 ESNA Jam | 2 | 1.30 | |
| 67 | R3001654 | 3001654 | Shaft - Roller | 1 | 50.75 | |
| 68 | R500534 | 500534, R500534 | Bearing - with Cup | 2 | 11.80 | |
| 69 | R114-3717 | | Seal | 2 | 2.35 | |
| 70 | R112-5290 | | Bearing - Stainless | 2 | 10.30 | |
| 71 | R112-7494 | | Seal | 4 | 5.15 | |
| 72 | R114-3745 | | Locknut - Bearing - Stainless | 2 | 19.15 | |
| 73 | R1013671 | | Shaft - Roller | 1 | 53.20 | |
| 74 | R300106 | | Screw - Set 5/16-18 x 1/4 | 4 | 0.32 | |

Replaces Jacobsen 123268 3" Roller Parts

| | | | | | | |
|----|----------------|-------------------|------------------------|---|-------------|--|
| 76 | R338646 | 338646 | Seal - Outer Roller | 2 | 5.80 | |
| 77 | R338647 | 338647 | Seal - Inner Roller | 2 | 5.85 | |
| 78 | R366168 | 336168, 366168 | Sleeve - Wear Hardened | 2 | 5.90 | |
| 79 | R338645 | 338645 | Deflector - Cup | 2 | 4.95 | |

Replaces Jacobsen 1000770 2" Roller Parts

| | | | | | | |
|----|----------------|-------------------|----------------------------|---|-------------|--|
| 81 | R445718 | 445718, 445801 | Locknut - 5/8-18 All Metal | 2 | 3.45 | |
|----|----------------|-------------------|----------------------------|---|-------------|--|

All original equipment manufacturers names and part numbers are used for identification purposes only, and we are in no way implying that our products are original equipment parts. Prices subject to change without notice.



Replaces Jacobsen LF-570 Parts

7" Cutting Unit
Rollers



| Item No | R&R Part No. | OEM Part No. | Description | Qty Req | Price Each | Order Quantity |
|--|-----------------|--------------|-----------------------------|---------|--------------|----------------|
| Replaces Jacobsen 1002446 (24") & 1003728 (22") 2-1/2" Solid Roller Parts | | | | | | |
| 82 | R3005318 | 3005318 | Shaft - Fits OEM 1002446 | 1 | 49.85 | |
| 82 | R3008027 | 3008027 | Shaft - Fits 1003728 Roller | 1 | 49.80 | |
| 83 | R3005156 | 3005156 | Sleeve - Wear Hardened | 2 | 6.25 | |
| 84 | R548274 | 548274 | Seal - Oil | 2 | 4.80 | |
| 85 | R445798 | 445798 | Locknut - 3/4-16 Stover | 2 | 5.85 | |

All original equipment manufacturers names and part numbers are used for identification purposes only, and we are in no way implying that our products are original equipment parts. Prices subject to change without notice.