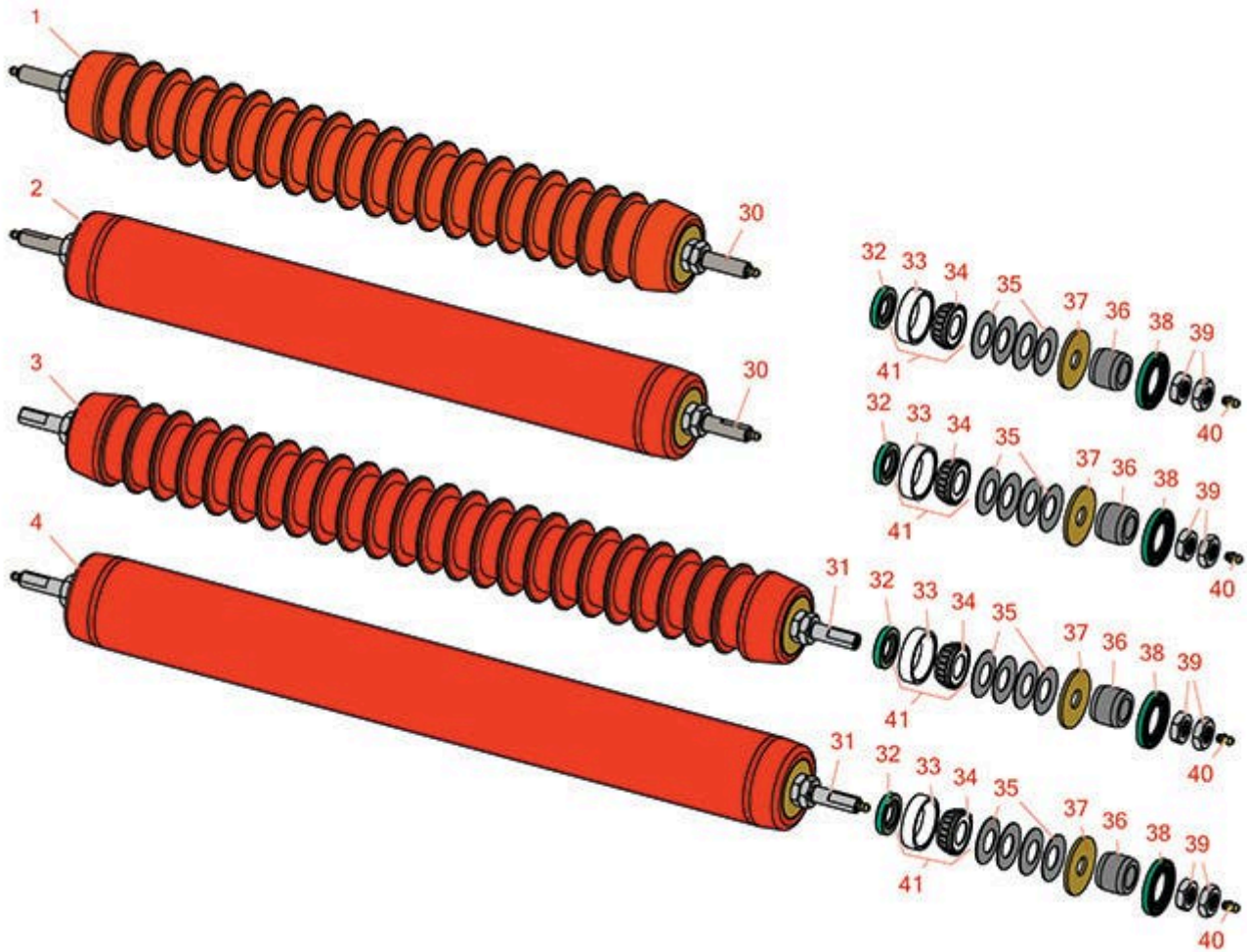




# Replaces Jacobsen LF-2500 Parts

Cutting Unit  
Rollers



All original equipment manufacturers names and part numbers are used for identification purposes only, and we are in no way implying that our products are original equipment parts. Prices subject to change without notice.



# Replaces Jacobsen LF-2500 Parts

Cutting Unit  
Rollers



Item No	R&R Part No.	OEM Part No.	Description	Qty Req	Price Each	Order Quantity
---------	--------------	--------------	-------------	---------	------------	----------------

## R&R Rollers Available - 22" Units

1	<b>R4115614</b>	4115614	Roller - Grooved Cast Steel	0	<b>360.45</b>	
---	-----------------	---------	-----------------------------	---	---------------	--

*Tech Note: Constructed with a through shaft, this heavy duty cast steel grooved roller uses greasable tapered bearings for extended life.:*

2	<b>R4115612</b>	4115612	Roller - Smooth Tubular Steel	0	<b>284.30</b>	
---	-----------------	---------	-------------------------------	---	---------------	--

*Tech Note: Constructed with a through shaft, this heavy duty roller uses greasable tapered bearings for extended life.:*

## R&R Rollers Available - 26" Units

3	<b>R4115615</b>	4115615	Roller - Grooved Cast Steel	0	<b>445.45</b>	
---	-----------------	---------	-----------------------------	---	---------------	--

*Tech Note: Constructed with a through shaft, this heavy duty cast steel grooved roller uses greasable tapered bearings for extended life.:*

4	<b>R4115613</b>	4115613	Roller - Smooth Tubular Steel	0	<b>312.25</b>	
---	-----------------	---------	-------------------------------	---	---------------	--

*Tech Note: Constructed with a through shaft, this heavy duty roller uses greasable tapered bearings for extended life.:*

## Other Parts Available

30	<b>R2203012</b>	2203012	Shaft - 22 in Roller	1	<b>59.05</b>	
----	-----------------	---------	----------------------	---	--------------	--

31	<b>R2203075</b>	2203075	Shaft - 26 in Roller	1	<b>61.25</b>	
----	-----------------	---------	----------------------	---	--------------	--

32	<b>R253-120</b>	220-8011-02, 253-120	Seal	2	<b>4.85</b>	
----	-----------------	-------------------------	------	---	-------------	--

33	<b>R254-79</b>	254-79, 4121175	Cup - Bearing	2	<b>3.20</b>	
----	----------------	--------------------	---------------	---	-------------	--

*Tech Note: Use R254-79M installation mandrel to properly install race.:*

34	<b>R254-78</b>	254-78, 385174, 4121174, 4135152	Tapered Bearing Cone	2	<b>6.05</b>	
----	----------------	---	----------------------	---	-------------	--

All original equipment manufacturers names and part numbers are used for identification purposes only, and we are in no way implying that our products are original equipment parts. Prices subject to change without notice.



# Replaces Jacobsen LF-2500 Parts

*Cutting Unit  
Rollers*



Item No	R&R Part No.	OEM Part No.	Description	Qty Req	Price Each	Order Quantity
35	<b>R64209-06</b>	64209-06	Washer - Spring Roller	8	<b>3.55</b>	
36	<b>R2203022</b>	2203022	Sleeve - Wear - Roller	2	<b>8.05</b>	
37	<b>R2202010</b>	2202010	Shield - Roller	2	<b>3.75</b>	
38	<b>RAN121759</b>	2208011-03, AN121759	Seal	2	<b>7.40</b>	
39	<b>R64244-02</b>	64244-02	Nut - Hex Jam 16mm x 2.0	4	<b>1.40</b>	
40	<b>RA299301</b>	A299301	Fitting - Grease	2	<b>0.54</b>	
41	<b>R500534</b>	500534, R500534	Bearing - with Cup	2	<b>11.80</b>	

All original equipment manufacturers names and part numbers are used for identification purposes only, and we are in no way implying that our products are original equipment parts. Prices subject to change without notice.