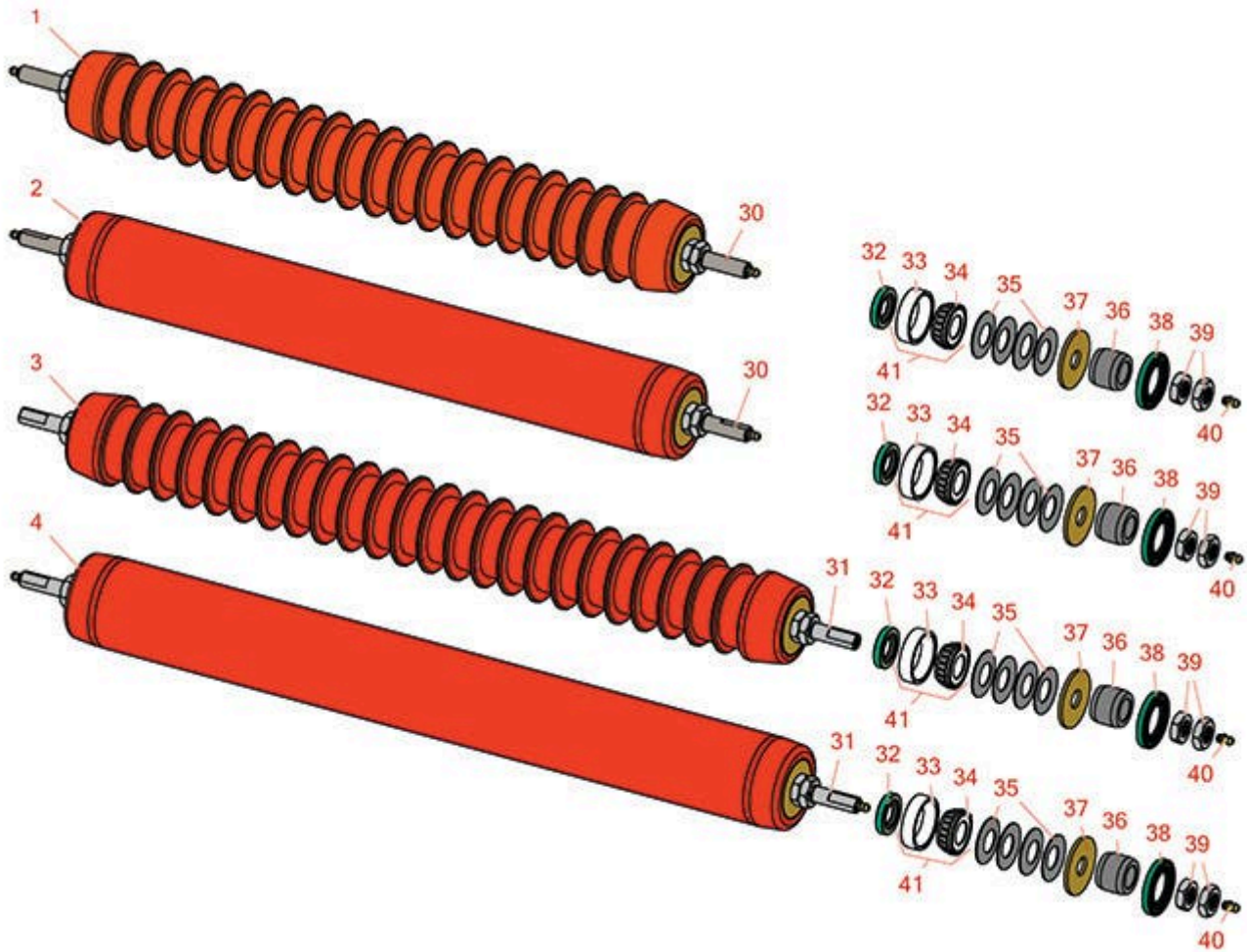




Replaces Jacobsen LF-2500 Parts

Cutting Unit
Rollers



All original equipment manufacturers names and part numbers are used for identification purposes only, and we are in no way implying that our products are original equipment parts. Prices subject to change without notice.



Replaces Jacobsen LF-2500 Parts

Cutting Unit
Rollers



Item No	R&R Part No.	OEM Part No.	Description	Qty Req	Price Each	Order Quantity
---------	--------------	--------------	-------------	---------	------------	----------------

R&R Rollers Available - 22" Units

1	R4115614	4115614	Roller - Grooved Cast Steel	0	378.50	
---	-----------------	---------	-----------------------------	---	---------------	--

Detail Description: Constructed with a through shaft, this heavy duty cast steel grooved roller uses greasable tapered bearings for extended life.:

2	R4115612	4115612	Roller - Smooth Tubular Steel	0	298.55	
---	-----------------	---------	-------------------------------	---	---------------	--

Detail Description: Constructed with a through shaft, this heavy duty roller uses greasable tapered bearings for extended life.:

R&R Rollers Available - 26" Units

3	R4115615	4115615	Roller - Grooved Cast Steel	0	467.75	
---	-----------------	---------	-----------------------------	---	---------------	--

Detail Description: Constructed with a through shaft, this heavy duty cast steel grooved roller uses greasable tapered bearings for extended life.:

4	R4115613	4115613	Roller - Smooth Tubular Steel	0	327.90	
---	-----------------	---------	-------------------------------	---	---------------	--

Detail Description: Constructed with a through shaft, this heavy duty roller uses greasable tapered bearings for extended life.:

Other Parts Available

30	R2203012	2203012	Shaft - 22 in Roller	1	59.05	
----	-----------------	---------	----------------------	---	--------------	--

31	R2203075	2203075	Shaft - 26 in Roller	1	61.25	
----	-----------------	---------	----------------------	---	--------------	--

32	R253-120	220-8011-02, 253-120	Seal	2	5.10	
----	-----------------	-------------------------	------	---	-------------	--

33	R254-79	254-79, 4121175	Cup - Bearing	2	3.40	
----	----------------	--------------------	---------------	---	-------------	--

Detail Description: Use R254-79M installation mandrel to properly install race.:

34	R254-78	254-78, 385174, 4121174, 4135152	Tapered Bearing Cone	2	6.40	
----	----------------	---	----------------------	---	-------------	--

All original equipment manufacturers names and part numbers are used for identification purposes only, and we are in no way implying that our products are original equipment parts. Prices subject to change without notice.



Replaces Jacobsen LF-2500 Parts

Cutting Unit
Rollers



Item No	R&R Part No.	OEM Part No.	Description	Qty Req	Price Each	Order Quantity
35	R64209-06	64209-06	Washer - Spring Roller	8	3.75	
36	R2203022	2203022	Sleeve - Wear - Roller	2	8.50	
37	R2202010	2202010	Shield - Roller	2	3.75	
38	RAN121759	2208011-03, AN121759	Seal	2	7.40	
39	R64244-02	64244-02	Nut - Hex Jam 16mm x 2.0	4	1.40	
40	RA299301	A299301	Fitting - Grease	2	0.59	
41	R500534	500534, R500534	Bearing - with Cup	2	12.40	

Detail Description: Kit includes: 1 ea R254-78- Bearing Cone & R254-79 Bearing Cone:

All original equipment manufacturers names and part numbers are used for identification purposes only, and we are in no way implying that our products are original equipment parts. Prices subject to change without notice.