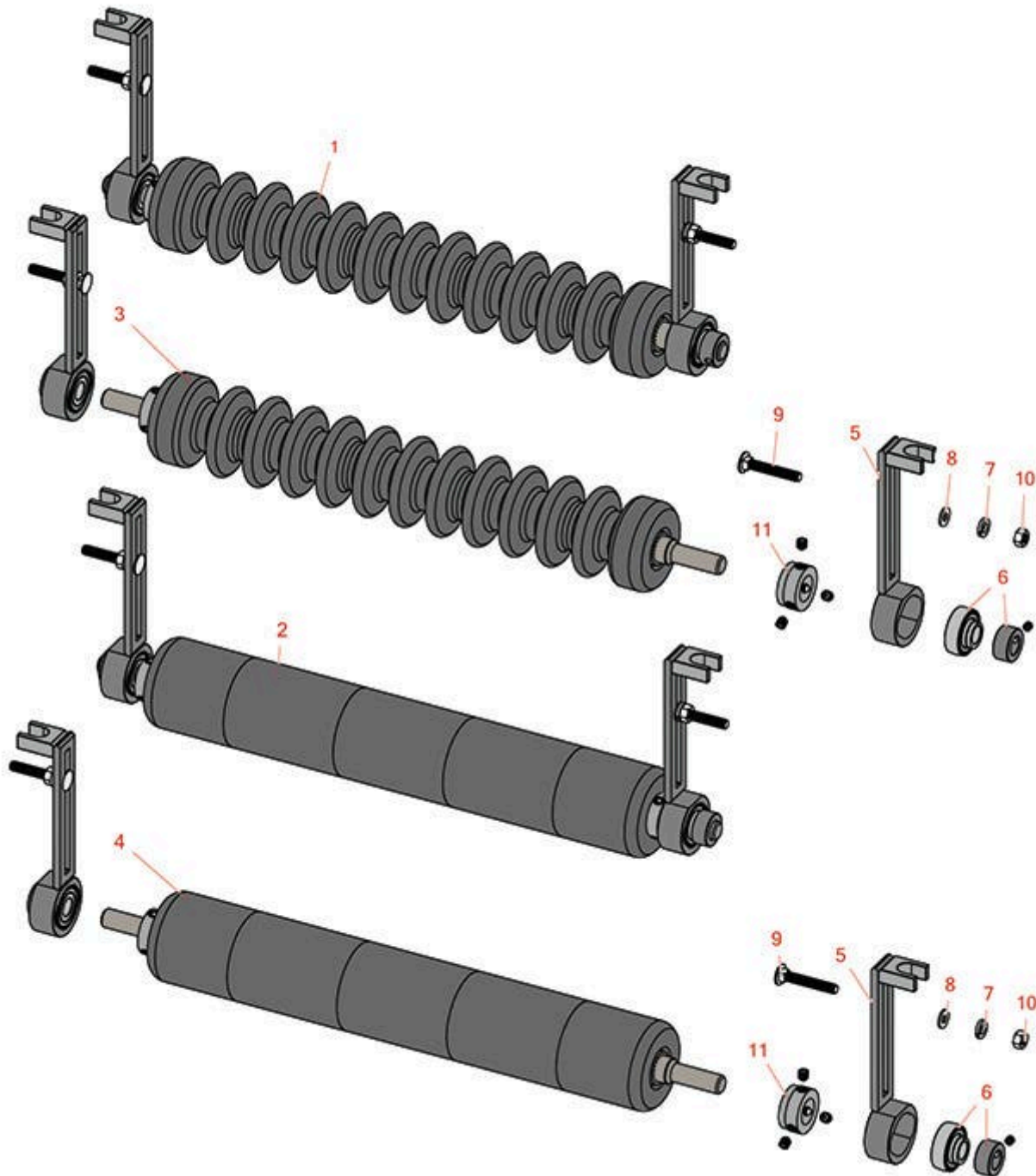




# Replaces Jacobsen LF-1880 Parts

Cutting Unit

Minuteman Roller System



All original equipment manufacturers names and part numbers are used for identification purposes only, and we are in no way implying that our products are original equipment parts. Prices subject to change without notice.



# Replaces Jacobsen LF-1880 Parts

Cutting Unit

Minuteman Roller System



Item No	R&R Part No.	OEM Part No.	Description	Qty Req	Price Each	Order Quantity
---------	--------------	--------------	-------------	---------	------------	----------------

## Complete Minuteman Roller Systems

1	<b>RMJ1801</b>		Minuteman Front 18" Grooved Roller System	0	<b>362.50</b>	
---	----------------	--	---	---	---------------	--

*Detail Description: Complete roller systems include roller, two brackets with bearings and mounting hardware.:*

2	<b>RMJ1801S</b>		Minuteman Front Smooth Roller System	0	<b>362.50</b>	
---	-----------------	--	--------------------------------------	---	---------------	--

*Detail Description: Complete roller systems include roller, two brackets with bearings and mounting hardware.:*

## Minuteman Rollers Only

3	<b>RM521</b>		Minuteman Grooved Roller Only - 18 in	0	<b>288.05</b>	
---	--------------	--	---------------------------------------	---	---------------	--

*Detail Description: Use with Minuteman Roller Bracket System Only:*

4	<b>RM521S</b>		Minuteman Smooth Roller Only	0	<b>288.05</b>	
---	---------------	--	------------------------------	---	---------------	--

*Detail Description: Use with Minuteman Roller Bracket System Only:*

## Other Parts Available

5	<b>RJ121</b>		Bracket - Front LH/RH	2	<b>60.35</b>	
---	--------------	--	-----------------------	---	--------------	--

6	<b>RMMB157</b>		Bearing w/Locking Collar	2	<b>21.95</b>	
---	----------------	--	--------------------------	---	--------------	--

7	<b>R446136</b>	446134, 446136	Washer - Lock 5/16 Zinc	2	<b>0.15</b>	
---	----------------	-------------------	-------------------------	---	-------------	--

8	<b>R453009</b>	3256-23, 452004, 452006, 452008, 453009	Washer - Flat 5/16 SAE	2	<b>0.14</b>	
---	----------------	---	------------------------	---	-------------	--

9	<b>RMM602</b>		Bolt - Carriage 5/16-18 x 2 Gr 5	2	<b>0.57</b>	
---	---------------	--	----------------------------------	---	-------------	--

10	<b>RMM603</b>		Nut - Hex 5/16-18	2	<b>0.14</b>	
----	---------------	--	-------------------	---	-------------	--

11	<b>RMM3</b>		End Hub - 7/8 ID	2	<b>10.35</b>	
----	-------------	--	------------------	---	--------------	--

All original equipment manufacturers names and part numbers are used for identification purposes only, and we are in no way implying that our products are original equipment parts. Prices subject to change without notice.