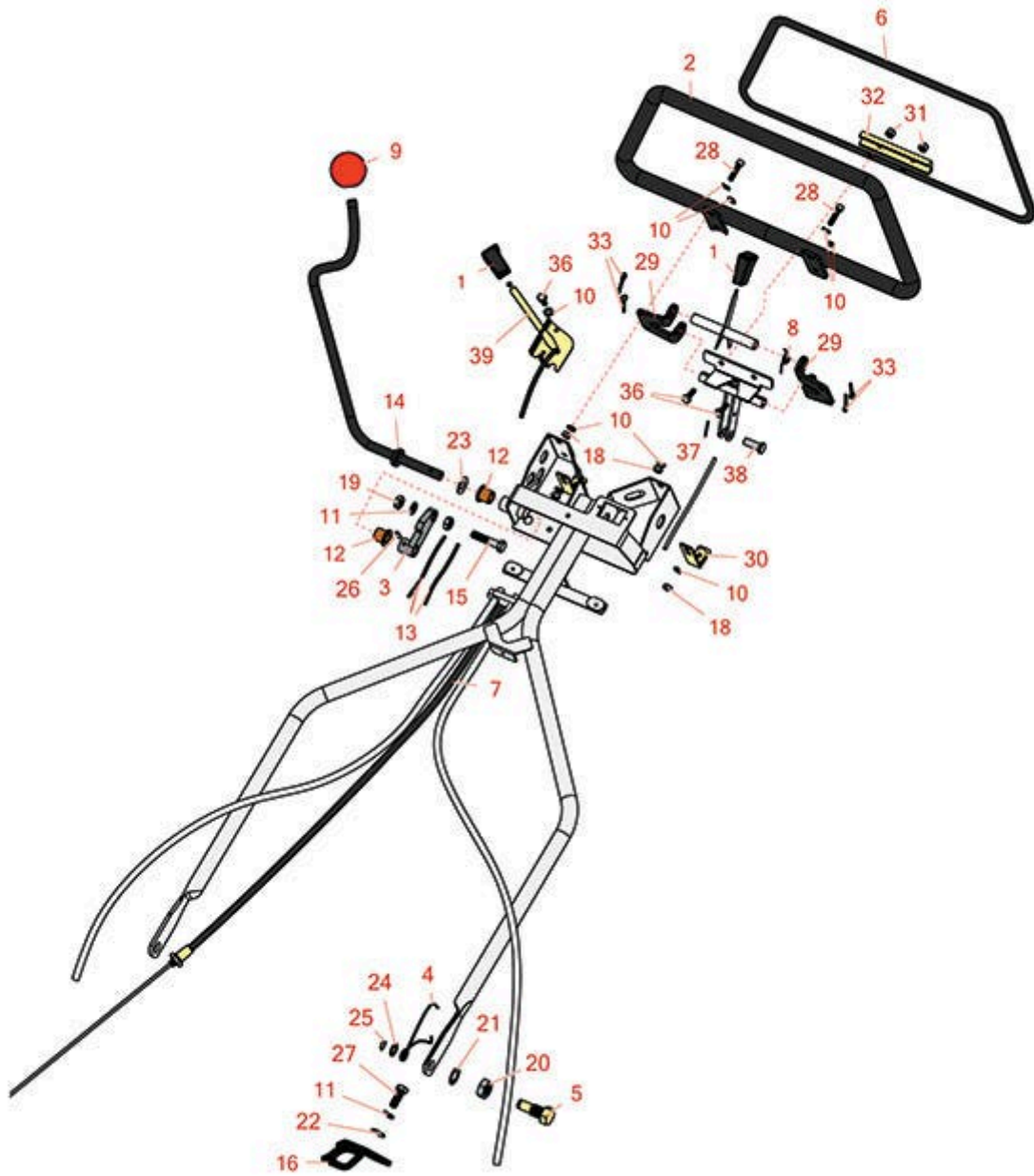
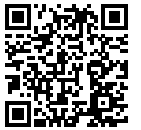




Replaces Jacobsen Greens King 518

Parts

Traction Unit
Handle



All original equipment manufacturers names and part numbers are used for identification purposes only, and we are in no way implying that our products are original equipment parts. Prices subject to change without notice.



Replaces Jacobsen Greens King 518

Parts

*Traction Unit
Handle*



Item No	R&R Part No.	OEM Part No.	Description	Qty Req	Price Each	Order Quantity
1	R366768	366768	Knob - Black Rubber	2	8.75	
2	R1001250	1001250	Handle Loop	1	133.85	
3	R2000067	2000067	Lever - Brake Clutch	1	17.30	
4	R2809900	2809900	Spring - LH Torsion	1	8.75	
4	R2809901	2809901	Spring - RH Torsion	1	8.75	
5	R2811559	2811559	Bolt - Handle Mounting	2	19.40	
6	R3002179	3002179	Handle Loop	1	100.05	
7	R3002477	3002477	Cable - Clutch	1	39.45	
8	R3002480	3002480	Torsion Spring - Handle Latch	1	2.75	
9	R101551	3002001	Knob - Threaded Brake Handle	1	17.25	
10	R3253-3	3253-3, 446128, 446130	Washer - Lock 1/4	4	0.11	
11	R3254-6	3254-6, 446140, 446142	Washer - Lock 3/8	3	0.08	
12	R366708	366708	Bearing - Flanged	2	12.05	
13	R101563		Cable - Brake	2	29.65	
13	R366741	366741	Cable - Brake	2	32.65	
14	R101550	1000634	Handle - Brake - Threaded	1	20.35	
15	R400268	400268	Bolt - Hex HD 3/8-16 x 1-3/4	1	0.78	
16	R4115960	4115960	Stop - LH Handle	1	35.10	
16	R4115961	4115961	Stop - RH Handle	1	35.10	

All original equipment manufacturers names and part numbers are used for identification purposes only, and we are in no way implying that our products are original equipment parts. Prices subject to change without notice.



Replaces Jacobsen Greens King 518

Parts

*Traction Unit
Handle*



Item No	R&R Part No.	OEM Part No.	Description	Qty Req	Price Each	Order Quantity
18	R443102	443102	Nut - 1/4-20 Yellow Zinc	4	0.22	
19	R443110	306562, 443110, 444762	Nut - 3/8-16 Hex	2	0.14	
20	R443828	443828	Nut - 5/8-18 Hex	2	0.62	
21	R447224	447224	Washer - Lock 5/8 Int Star Z	2	0.40	
22	R453011	453011	Washer - Flat 3/8 SAE Y/Zinc	2	0.11	
23	R454008	454008	Spring Washer 1/2 x 3/4	1	3.45	
24	R455012	455012	Washer - Flat 1/2 x 3/4	2	0.70	
25	R458006	458006	Ring - Retaining	2	0.90	
26	R461181	461181	Grooved Pin - 3/16 x 3/4	1	2.85	
27	RF3205	400188, 400262	Bolt - Hex HD 3/8-16 x 1	2	0.78	
28	R316796	316796, 434029	Bolt - Allen HD 1/4-20 x 1	2	0.39	
29	R3002047	3002047	Bracket	2	11.30	
30	R1001292	1001292	Bracket - Handle Bar Cover	2	13.05	
31	R32152-4	32152-4, 444708	Locknut - 1/4-20 All Metal	2	0.39	
32	R101553	3004259	Channel - Loop	1	17.30	
33	R460026	460026	Pin - Cotter 1/8 x 3/4	4	0.26	
36	R321-4	321-4, 400108	Bolt - Hex HD 1/4-20 x 3/4	2	0.52	
37	R1023-4	460014	Pin - Cotter 3/32 x 3/4	1	0.23	
38	R461462	461462	Clevis Pin - 3/8 x 1 3/32	1	1.45	

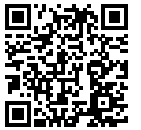
All original equipment manufacturers names and part numbers are used for identification purposes only, and we are in no way implying that our products are original equipment parts. Prices subject to change without notice.



Replaces Jacobsen Greens King 518

Parts

*Traction Unit
Handle*



Item No	R&R Part No.	OEM Part No.	Description	Qty Req	Price Each	Order Quantity
39	R366743	366743	Throttle Control	1	42.20	

All original equipment manufacturers names and part numbers are used for identification purposes only, and we are in no way implying that our products are original equipment parts. Prices subject to change without notice.