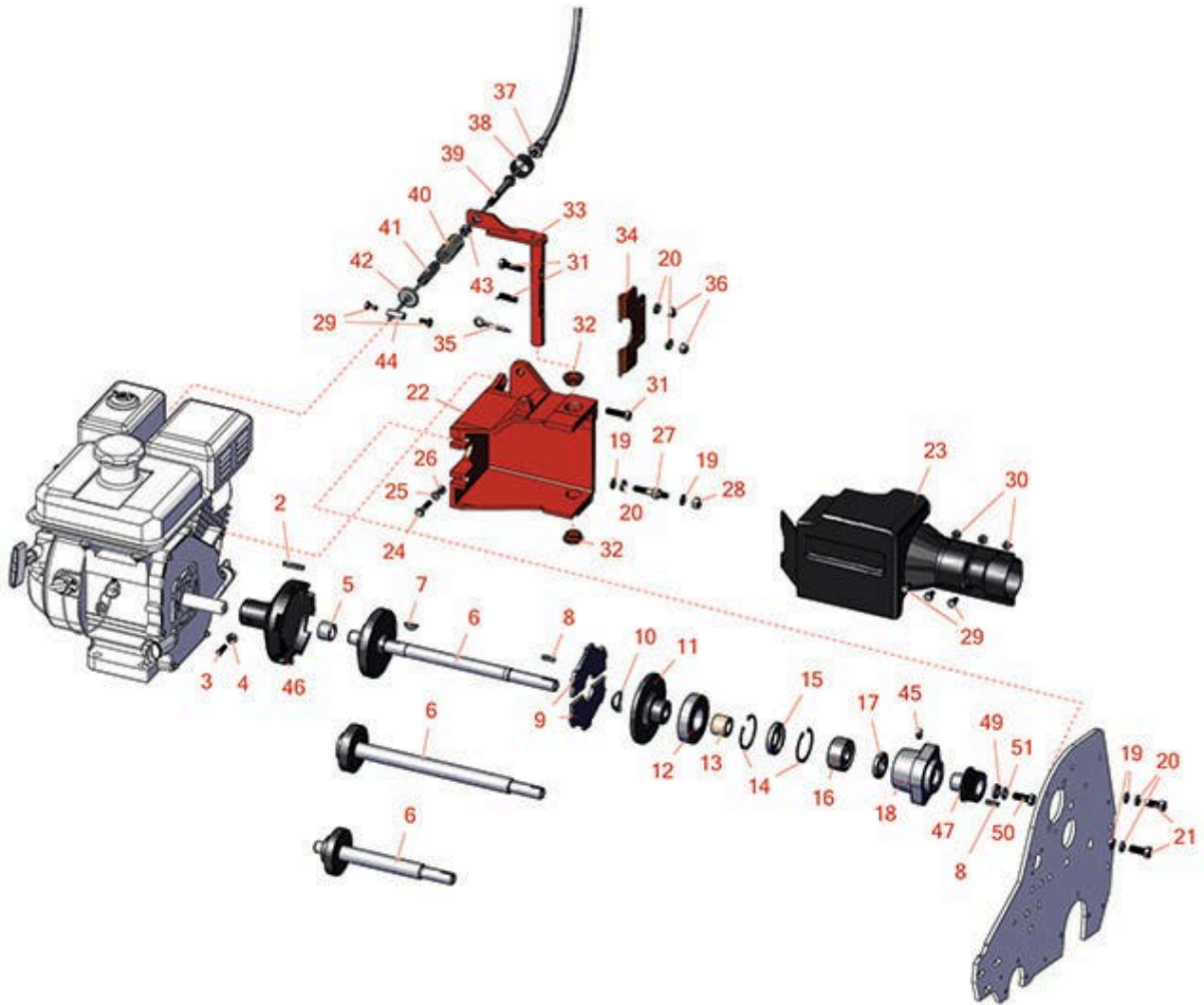
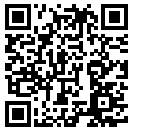




Replaces Jacobsen Greens King 518

Parts

Traction Unit
Clutch



All original equipment manufacturers names and part numbers are used for identification purposes only, and we are in no way implying that our products are original equipment parts. Prices subject to change without notice.



Replaces Jacobsen Greens King 518

Parts

*Traction Unit
Clutch*



Item No	R&R Part No.	OEM Part No.	Description	Qty Req	Price Each	Order Quantity
---------	--------------	--------------	-------------	---------	------------	----------------

Other Parts Available

2	R320774	320774	Key - Sq 3/16 x 1-1/4	1	1.60	
3	R410503	410503	Screw - Sq HD Set 5/16-18 x 7/8	1	3.75	
4	R445502	445502	Nut - 5/16-18 Pal Type R	1	1.05	
5	R3008993	3008993	Bushing - Pilot	1	33.65	
6	R1000014	1000014	Shaft - Clutch Fits 18	1	444.50	
6	R1000842	1000842	Shaft - Clutch Fits 22	1	329.30	
6	R1000015	1000015	Shaft - Clutch Fits 26	1	515.80	
6	R4136652	4136652	Shaft Assy - Clutch Plate - Fits 22	1	89.35	
6	R4136651	4136651	Shaft - Clutch Centrifugal Fits 18	1	89.35	
7	R463113	463113	Key - Reel Hi Pro	1	0.78	
8	R367082	367082	Key - 3/16 Sq. x 3/4	1	1.40	
9	R2501151	2501151	Disc - Clutch (Set of 2)	1	39.35	
10	R366689	366689	Washer - Washer Spring Steel	1	4.20	
11	R2000004	2000004	Sliding Disc - Clutch	1	129.50	
12	R367365	367365	Bearing	1	18.10	
13	R366686	366686	Sleeve - Wear Clutch	1	10.65	
14	R458113	458113	Ring - Snap Fits Groomer	2	2.35	
15	R366685	366685	Seal	1	9.65	
16	R366684	366684	Bearing	1	78.60	
17	R364170	364170, 366648	Seal	1	5.45	

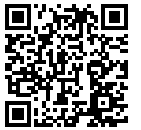
All original equipment manufacturers names and part numbers are used for identification purposes only, and we are in no way implying that our products are original equipment parts. Prices subject to change without notice.



Replaces Jacobsen Greens King 518

Parts

*Traction Unit
Clutch*



Item No	R&R Part No.	OEM Part No.	Description	Qty Req	Price Each	Order Quantity
18	R241831	241831	Bearing Housing - Clutch	1	80.95	
19	R364441	364441, 366641	Washer - Flat 5/16x7/8	4	2.15	
19	R453009	3256-23, 452004, 452006, 452008, 453009	Washer - Flat 5/16 SAE	4	0.13	
20	R446136	446134, 446136	Washer - Lock 5/16 Zinc	4	0.14	
21	R322-5	400188	Bolt - Hex HD 5/16-18 x 1	2	0.40	
22	R5002964	5002964	Housing - Clutch	1	229.80	
23	R1003718	1003718	Cover - Clutch	1	110.65	
24	R400112	400112, 400114	Bolt - Hex HD 1/4-20 x 1-1/4	1	0.40	
25	R3253-3	3253-3, 446128, 446130	Washer - Lock 1/4	1	0.11	
26	R443102	443102	Nut - 1/4-20 Yellow Zinc	1	0.22	
27	R3004616	3004616	Mounting Stud - Clutch Cover	2	30.10	
28	R444718	444718	Nut - 5/16-18 Center Lock YZ	2	0.46	
29	R400104	400104	Bolt - Hex HD 1/4-20 x 1/2	5	0.29	
30	R32152-4	32152-4, 444708	Locknut - 1/4-20 All Metal	3	0.39	
31	R400228	400228	Bolt - Hex HD 5/16-24 x 1-1/4	2	1.20	
32	R352726	352726	Bushing - Bronze	2	2.85	
33	R132930	132930	Clutch Arm Assy	1	70.80	

All original equipment manufacturers names and part numbers are used for identification purposes only, and we are in no way implying that our products are original equipment parts. Prices subject to change without notice.



Replaces Jacobsen Greens King 518

Parts

*Traction Unit
Clutch*



Item No	R&R Part No.	OEM Part No.	Description	Qty Req	Price Each	Order Quantity
34	R3005380	3005380	Clutch Fingers	1	40.80	
35	R460052	460052	Pin - Cotter 3/16 x 1-1/2	1	0.28	
36	R306320	306320	Nut - 5/16-18 Hex YZ	2	0.18	
37	R3002477	3002477	Cable - Clutch	1	39.45	
38	R3000966	3000966	Spring	1	8.75	
39	R3000914	3000914	Bolt - Special - Clutch	1	17.85	
40	R366800	366800	Spring - Clutch	1	5.70	
41	R366799	366799	Spring - Clutch	1	5.15	
42	R307456	307456	Washer - Cupped	1	5.15	
43	R3219-3	3219-3, 443112, 443812	Nut - 3/8-24	1	0.34	
44	R366742	366742	Pivot Pin w/Set Screw - Brake Band	1	12.90	
45	R302-5	302-5, 471214, 471223, 471226	Fitting - Grease	1	0.27	
46	R132898	132898	Clutch Body	1	101.15	
47	R3007847	3007847	Pulley - 7 Rib Micro V	1	84.65	
49	R366653	366653	Spacer	1	3.85	
50	RF3205	400188, 400262	Bolt - Hex HD 3/8-16 x 1	1	0.78	
51	R3254-6	3254-6, 446140, 446142	Washer - Lock 3/8	1	0.08	

All original equipment manufacturers names and part numbers are used for identification purposes only, and we are in no way implying that our products are original equipment parts. Prices subject to change without notice.