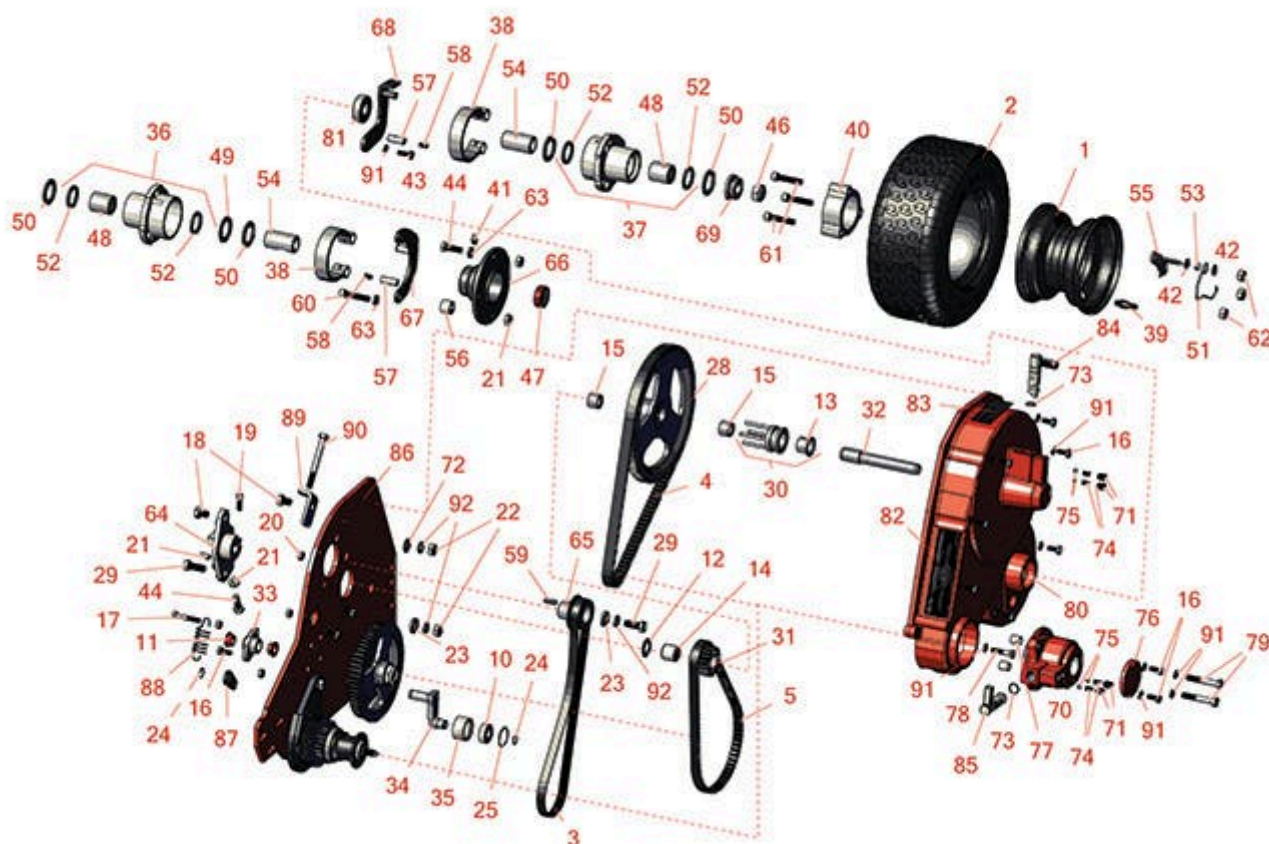




# Replaces Jacobsen Greens King 422

## Parts

*Traction Unit  
Drive Housing*



All original equipment manufacturers names and part numbers are used for identification purposes only, and we are in no way implying that our products are original equipment parts. Prices subject to change without notice.



# Replaces Jacobsen Greens King 422

## Parts

Traction Unit

Drive Housing



Item No	R&R Part No.	OEM Part No.	Description	Qty Req	Price Each	Order Quantity
---------	--------------	--------------	-------------	---------	------------	----------------

### Tires

1	<b>R5002905</b>	5002905	Wheel Assy - 3x5	2	<b>53.60</b>	
2	<b>RCT5110101</b>	554847	Tire - 11x4.00-5 Nhs (2 Ply) Carlisle Turf Saver	2	<b>20.60</b>	

### Belts

3	<b>R2810713</b>	2810713	Belt - 7 Rib Micro V	1	<b>29.60</b>	
4	<b>R5001124</b>	2811363	Belt - 112 Tooth .460 Wide	1	<b>53.15</b>	
5	<b>R5002403</b>	2811071	Belt - 80 Tooth x 17mm WIDE(.669)	1	<b>49.25</b>	

### Other Parts Available

10	<b>R344545</b>	344545	Bearing - Roller Brush Brkt	1	<b>9.05</b>	
11	<b>R352936</b>	352936	Bushing - Bronze	2	<b>3.55</b>	
12	<b>R359864</b>	359864	Flat Washer - Hardened 5/8 x 1.100	0	<b>2.55</b>	
13	<b>R366725</b>	366725	Bushing - Flanged	1	<b>13.95</b>	
14	<b>R367553</b>	367553	Bearing - Needle	1	<b>13.95</b>	
15	<b>R367554</b>	367554	Bearing - Needle	2	<b>13.95</b>	
16	<b>R400106</b>	400106	Bolt - Hex HD 1/4-20 x 5/8	12	<b>0.28</b>	
17	<b>R400116</b>	400116	Bolt - Hex HD 1/4-20 x 1-1/2	1	<b>0.65</b>	
18	<b>R400254</b>	400254	Bolt - Hex HD 3/8-16 x 1/2	2	<b>0.59</b>	
19	<b>R434031</b>	434031	Bolt - Soc HD Cap 1/4-20 x 3/4 Nyloc	1	<b>1.60</b>	
20	<b>R443102</b>	443102	Nut - 1/4-20 Yellow Zinc	10	<b>0.22</b>	
21	<b>R443106</b>	443106	Nut - 5/16-18 Y/Zinc Plated	3	<b>0.19</b>	
22	<b>R443110</b>	306562, 443110, 444762	Nut - 3/8-16 Hex	2	<b>0.14</b>	

All original equipment manufacturers names and part numbers are used for identification purposes only, and we are in no way implying that our products are original equipment parts. Prices subject to change without notice.



# Replaces Jacobsen Greens King 422

## Parts

Traction Unit  
Drive Housing



Item No	R&R Part No.	OEM Part No.	Description	Qty Req	Price Each	Order Quantity
23	<b>R366653</b>	366653	Spacer	2	<b>3.85</b>	
24	<b>R458006</b>	458006	Ring - Retaining	2	<b>0.90</b>	
25	<b>R458105</b>	458105	Ring - Retaining	1	<b>1.30</b>	
28	<b>R503685</b>	503685	Pulley - 80 Tooth	1	<b>331.95</b>	
29	<b>RF3205</b>	400188, 400262	Bolt - Hex HD 3/8-16 x 1	2	<b>0.78</b>	
30	<b>R1000056</b>	1000056	Traction Clutch	1	<b>91.50</b>	
<i>Tech Note: Includes R366725:</i>						
31	<b>R5002447</b>	5002447	Pulley - 18 Tooth	1	<b>124.25</b>	
32	<b>R3001273</b>	3001273	Shaft - Belts	1	<b>70.80</b>	
33	<b>R2810550</b>	2810550	Bracket - Idler	1	<b>52.50</b>	
34	<b>R2809665</b>	2809665	Idler - Arm	1	<b>50.80</b>	
35	<b>R2809666</b>	2809666	Pulley - Belt Idler	1	<b>24.45</b>	
36	<b>R1000476</b>	1000476	Hub Assy - RH	1	<b>186.95</b>	
<i>Tech Note: Includes R338766 &amp; R366705:</i>						
37	<b>R1000477</b>	1000477	Hub Assy - LH	1	<b>186.95</b>	
<i>Tech Note: Includes R338766 &amp; R366705:</i>						
38	<b>R164056</b>	164056	Band - Brake	2	<b>35.55</b>	
39	<b>R232-27</b>	232-27, 360111	Stem - Valve w/ Cap	2	<b>4.15</b>	
40	<b>R271920</b>	271920	Spacer - Wheel	2	<b>21.45</b>	

All original equipment manufacturers names and part numbers are used for identification purposes only, and we are in no way implying that our products are original equipment parts. Prices subject to change without notice.



# Replaces Jacobsen Greens King 422

## Parts

*Traction Unit*

*Drive Housing*



Item No	R&R Part No.	OEM Part No.	Description	Qty Req	Price Each	Order Quantity
41	<b>R302-5</b>	302-5, 471214, 471223, 471226	Fitting - Grease	1	<b>0.27</b>	
42	<b>R453009</b>	3256-23, 452004, 452006, 452008, 453009	Washer - Flat 5/16 SAE	12	<b>0.13</b>	
43	<b>R321-4</b>	321-4, 400108	Bolt - Hex HD 1/4-20 x 3/4	2	<b>0.52</b>	
44	<b>R322-5</b>	400188	Bolt - Hex HD 5/16-18 x 1	2	<b>0.40</b>	
46	<b>R3296-33</b>	444820, 445718, 445801	Locknut - 5/8-18 ESNA Jam	2	<b>1.30</b>	
47	<b>R337678</b>	337678, 365753	Seal - Clutch Shaft Bearing	1	<b>6.75</b>	
48	<b>R338766</b>	338766	Bearing - Clutch Differential Shaft	1	<b>40.80</b>	
49	<b>R361451</b>	361451	Flat Washer 1 x 1-1/2 Hardened Thrust	1	<b>3.45</b>	
50	<b>R366697</b>	366697	Spacer - Bronze Thrust	4	<b>3.85</b>	
51	<b>R366704</b>	366704	Spring - Wheel Lock	2	<b>5.40</b>	
52	<b>R366705</b>	366705	Seal - Grease	2	<b>2.45</b>	
53	<b>R366716</b>	366716	Spacer - Wheel	6	<b>2.90</b>	
54	<b>R366717</b>	366717	Clutch Sleeve - Wheel	2	<b>47.25</b>	
55	<b>R366719</b>	366719	Latch - Wheel	2	<b>16.15</b>	
56	<b>R366737</b>	366737	Spacer - Wheel	2	<b>6.80</b>	
57	<b>R366742</b>	366742	Pivot Pin w/Set Screw - Brake Band	2	<b>12.90</b>	
58	<b>R415513</b>	415513	Screw - Set 1/4-20 x 1/2 Cup Pt	2	<b>0.28</b>	

All original equipment manufacturers names and part numbers are used for identification purposes only, and we are in no way implying that our products are original equipment parts. Prices subject to change without notice.



# Replaces Jacobsen Greens King 422

## Parts

*Traction Unit*

*Drive Housing*



Item No	R&R Part No.	OEM Part No.	Description	Qty Req	Price Each	Order Quantity
59	<b>R367082</b>	367082	Key - 3/16 Sq. x 3/4	1	<b>1.40</b>	
60	<b>R434032</b>	434032	Screw - Soc HD 5/16-18 x 1-3/4	2	<b>2.30</b>	
61	<b>R434049</b>	434049	Bolt - Soc HD Cap 5/16-18 x 2	6	<b>0.83</b>	
62	<b>R444718</b>	444718	Nut - 5/16-18 Center Lock YZ	6	<b>0.46</b>	
63	<b>R446136</b>	446134, 446136	Washer - Lock 5/16 Zinc	6	<b>0.14</b>	
64	<b>R2000148</b>	2000148	Bracket - Bearing	1	<b>41.05</b>	
65	<b>R3007847</b>	3007847	Pulley - 7 Rib Micro V	1	<b>84.65</b>	
66	<b>R132658</b>	132658	Housing - Parking Brake	1	<b>84.45</b>	
67	<b>R132663</b>	132663	Bracket - Brake Mounting RH	1	<b>48.70</b>	
68	<b>R164063</b>	164063	Bracket - Brake Mounting LH	1	<b>54.25</b>	
69	<b>R366718</b>	366716, 366718	Latching Collar - Wheel	2	<b>13.30</b>	
70	<b>R220317</b>	220317	Shifter Housing - Orange	1	<b>124.40</b>	
71	<b>R250413</b>	250413	Screw - Set 3/8-16 x 1/2	4	<b>0.47</b>	
72	<b>R453011</b>	453011	Washer - Flat 3/8 SAE Y/Zinc	2	<b>0.11</b>	
73	<b>R339910</b>	339910	O-Ring	2	<b>0.47</b>	
74	<b>R343848</b>	343848	Spring	4	<b>4.65</b>	
75	<b>R343850</b>	343850	Ball Bearing - 1/4	4	<b>0.83</b>	
76	<b>R366710</b>	366710	Cover	1	<b>23.60</b>	
77	<b>R366715</b>	366715	Spacer	2	<b>4.35</b>	
78	<b>R400112</b>	400112, 400114	Bolt - Hex HD 1/4-20 x 1-1/4	4	<b>0.40</b>	

All original equipment manufacturers names and part numbers are used for identification purposes only, and we are in no way implying that our products are original equipment parts. Prices subject to change without notice.



# Replaces Jacobsen Greens King 422

## Parts

*Traction Unit*

*Drive Housing*



Item No	R&R Part No.	OEM Part No.	Description	Qty Req	Price Each	Order Quantity
79	<b>R400196</b>	400196	Bolt - Hex HD 5/16-18 x 2	2	<b>0.77</b>	
80	<b>R503638</b>	503638	Belt Cover - Orange	1	<b>331.05</b>	
81	<b>RA203603</b>	366707, A203603	Bearing	1	<b>9.65</b>	
82	<b>R2811092</b>	2811092	Decal - Warning	1	<b>1.85</b>	
83	<b>R3001792</b>	3001792	Decal - Reel Clutch	1	<b>3.25</b>	
84	<b>R3000660</b>	3000660	Traction Clutch Lever	1	<b>34.05</b>	
85	<b>R3004402</b>	3004402	Lever - Shifter Shaft	1	<b>34.05</b>	
86	<b>R2811121</b>	2811121	Frame - LH	1	<b>207.70</b>	
87	<b>R2809667</b>	2809667	Bracket - Idler - Spring	1	<b>6.80</b>	
88	<b>R2809669</b>	2809669	Spring - Idler	1	<b>2.35</b>	
89	<b>R3009434</b>	3009434	Bracket - Belt Adjusting	1	<b>7.40</b>	
90	<b>R2500485</b>	2500485	Bolt - Hex HD 5/16-18 x 3	1	<b>0.83</b>	
91	<b>R3253-3</b>	3253-3, 446128, 446130	Washer - Lock 1/4	14	<b>0.11</b>	
92	<b>R3254-6</b>	3254-6, 446140, 446142	Washer - Lock 3/8	1	<b>0.08</b>	

All original equipment manufacturers names and part numbers are used for identification purposes only, and we are in no way implying that our products are original equipment parts. Prices subject to change without notice.