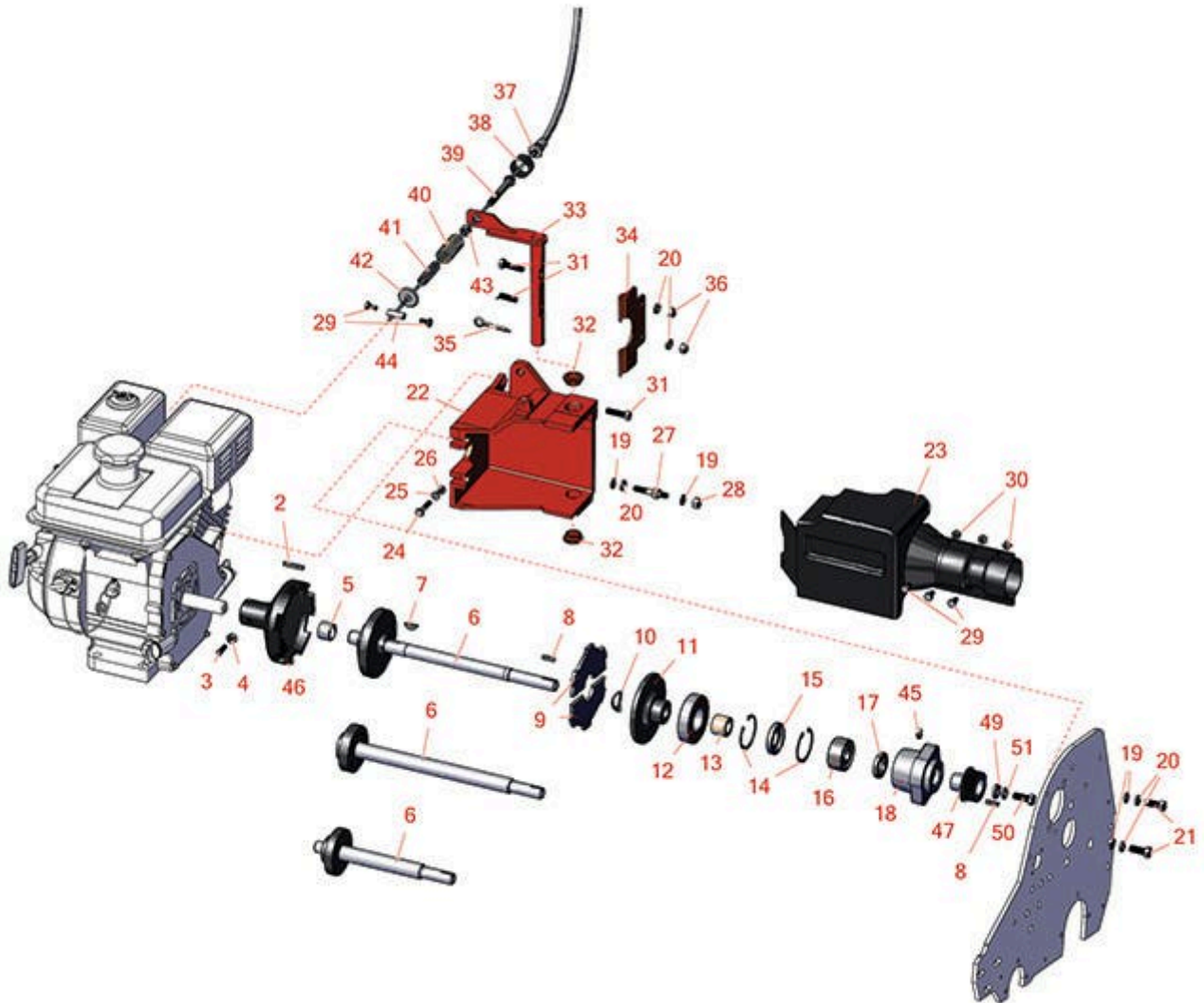
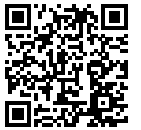




# Replaces Jacobsen Greens King 422

## Parts

Traction Unit  
Clutch



All original equipment manufacturers names and part numbers are used for identification purposes only, and we are in no way implying that our products are original equipment parts. Prices subject to change without notice.



# Replaces Jacobsen Greens King 422

## Parts

*Traction Unit  
Clutch*



Item No	R&R Part No.	OEM Part No.	Description	Qty Req	Price Each	Order Quantity
---------	--------------	--------------	-------------	---------	------------	----------------

### Other Parts Available

2	<b>R320774</b>	320774	Key - Sq 3/16 x 1-1/4	1	<b>1.60</b>	
3	<b>R410503</b>	410503	Screw - Sq HD Set 5/16-18 x 7/8	1	<b>3.75</b>	
4	<b>R445502</b>	445502	Nut - 5/16-18 Pal Type R	1	<b>1.05</b>	
5	<b>R3008993</b>	3008993	Bushing - Pilot	1	<b>33.65</b>	
6	<b>R1000014</b>	1000014	Shaft - Clutch Fits 18	1	<b>444.50</b>	
6	<b>R1000842</b>	1000842	Shaft - Clutch Fits 22	1	<b>329.30</b>	
6	<b>R1000015</b>	1000015	Shaft - Clutch Fits 26	1	<b>515.80</b>	
6	<b>R4136652</b>	4136652	Shaft Assy - Clutch Plate - Fits 22	1	<b>89.35</b>	
6	<b>R4136651</b>	4136651	Shaft - Clutch Centrifugal Fits 18	1	<b>89.35</b>	
7	<b>R463113</b>	463113	Key - Reel Hi Pro	1	<b>0.78</b>	
8	<b>R367082</b>	367082	Key - 3/16 Sq. x 3/4	1	<b>1.40</b>	
9	<b>R2501151</b>	2501151	Disc - Clutch (Set of 2)	1	<b>39.35</b>	
10	<b>R366689</b>	366689	Washer - Washer Spring Steel	1	<b>4.20</b>	
11	<b>R2000004</b>	2000004	Sliding Disc - Clutch	1	<b>129.50</b>	
12	<b>R367365</b>	367365	Bearing	1	<b>18.10</b>	
13	<b>R366686</b>	366686	Sleeve - Wear Clutch	1	<b>10.65</b>	
14	<b>R458113</b>	458113	Ring - Snap Fits Groomer	2	<b>2.35</b>	
15	<b>R366685</b>	366685	Seal	1	<b>9.65</b>	
16	<b>R366684</b>	366684	Bearing	1	<b>78.60</b>	
17	<b>R364170</b>	364170, 366648	Seal	1	<b>5.45</b>	

All original equipment manufacturers names and part numbers are used for identification purposes only, and we are in no way implying that our products are original equipment parts. Prices subject to change without notice.



# Replaces Jacobsen Greens King 422

## Parts

*Traction Unit  
Clutch*



Item No	R&R Part No.	OEM Part No.	Description	Qty Req	Price Each	Order Quantity
18	<b>R241831</b>	241831	Bearing Housing - Clutch	1	<b>80.95</b>	
19	<b>R364441</b>	364441, 366641	Washer - Flat 5/16x7/8	4	<b>2.15</b>	
19	<b>R453009</b>	3256-23, 452004, 452006, 452008, 453009	Washer - Flat 5/16 SAE	4	<b>0.13</b>	
20	<b>R446136</b>	446134, 446136	Washer - Lock 5/16 Zinc	4	<b>0.14</b>	
21	<b>R322-5</b>	400188	Bolt - Hex HD 5/16-18 x 1	2	<b>0.40</b>	
22	<b>R5002964</b>	5002964	Housing - Clutch	1	<b>229.80</b>	
23	<b>R1003718</b>	1003718	Cover - Clutch	1	<b>110.65</b>	
24	<b>R400112</b>	400112, 400114	Bolt - Hex HD 1/4-20 x 1-1/4	1	<b>0.40</b>	
25	<b>R3253-3</b>	3253-3, 446128, 446130	Washer - Lock 1/4	1	<b>0.11</b>	
26	<b>R443102</b>	443102	Nut - 1/4-20 Yellow Zinc	1	<b>0.22</b>	
27	<b>R3004616</b>	3004616	Mounting Stud - Clutch Cover	2	<b>30.10</b>	
28	<b>R444718</b>	444718	Nut - 5/16-18 Center Lock YZ	2	<b>0.46</b>	
29	<b>R400104</b>	400104	Bolt - Hex HD 1/4-20 x 1/2	5	<b>0.29</b>	
30	<b>R32152-4</b>	32152-4, 444708	Locknut - 1/4-20 All Metal	3	<b>0.39</b>	
31	<b>R400228</b>	400228	Bolt - Hex HD 5/16-24 x 1-1/4	2	<b>1.20</b>	
32	<b>R352726</b>	352726	Bushing - Bronze	2	<b>2.85</b>	
33	<b>R132930</b>	132930	Clutch Arm Assy	1	<b>70.80</b>	

All original equipment manufacturers names and part numbers are used for identification purposes only, and we are in no way implying that our products are original equipment parts. Prices subject to change without notice.



# Replaces Jacobsen Greens King 422

## Parts

*Traction Unit  
Clutch*



Item No	R&R Part No.	OEM Part No.	Description	Qty Req	Price Each	Order Quantity
34	<b>R3005380</b>	3005380	Clutch Fingers	1	<b>40.80</b>	
35	<b>R460052</b>	460052	Pin - Cotter 3/16 x 1-1/2	1	<b>0.28</b>	
36	<b>R306320</b>	306320	Nut - 5/16-18 Hex YZ	2	<b>0.18</b>	
37	<b>R3002477</b>	3002477	Cable - Clutch	1	<b>39.45</b>	
38	<b>R3000966</b>	3000966	Spring	1	<b>8.75</b>	
39	<b>R3000914</b>	3000914	Bolt - Special - Clutch	1	<b>17.85</b>	
40	<b>R366800</b>	366800	Spring - Clutch	1	<b>5.70</b>	
41	<b>R366799</b>	366799	Spring - Clutch	1	<b>5.15</b>	
42	<b>R307456</b>	307456	Washer - Cupped	1	<b>5.15</b>	
43	<b>R3219-3</b>	3219-3, 443112, 443812	Nut - 3/8-24	1	<b>0.34</b>	
44	<b>R366742</b>	366742	Pivot Pin w/Set Screw - Brake Band	1	<b>12.90</b>	
45	<b>R302-5</b>	302-5, 471214, 471223, 471226	Fitting - Grease	1	<b>0.27</b>	
46	<b>R132898</b>	132898	Clutch Body	1	<b>101.15</b>	
47	<b>R3007847</b>	3007847	Pulley - 7 Rib Micro V	1	<b>84.65</b>	
49	<b>R366653</b>	366653	Spacer	1	<b>3.85</b>	
50	<b>RF3205</b>	400188, 400262	Bolt - Hex HD 3/8-16 x 1	1	<b>0.78</b>	
51	<b>R3254-6</b>	3254-6, 446140, 446142	Washer - Lock 3/8	1	<b>0.08</b>	

All original equipment manufacturers names and part numbers are used for identification purposes only, and we are in no way implying that our products are original equipment parts. Prices subject to change without notice.