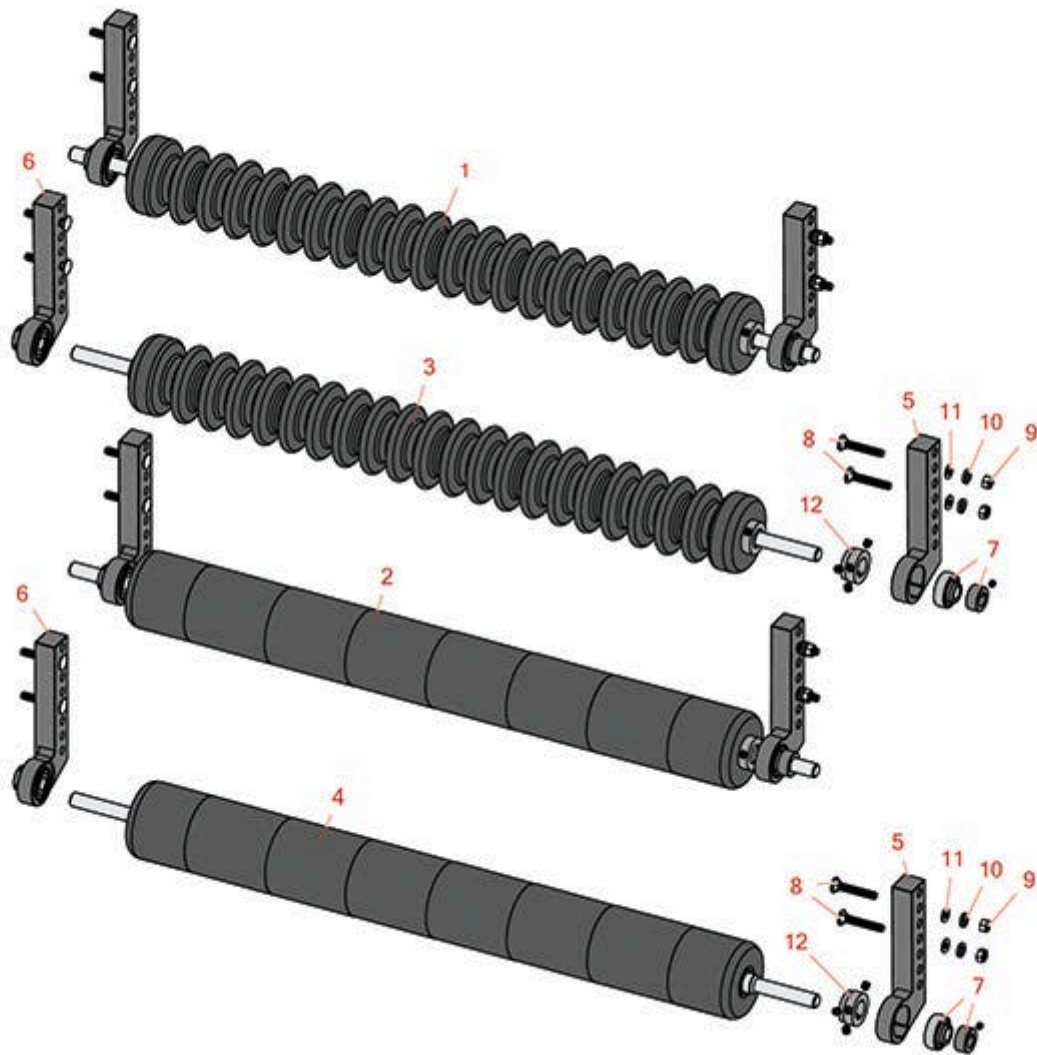




# Replaces Jacobsen Fairway Parts

Cutting Unit

Minuteman Roller System



All original equipment manufacturers names and part numbers are used for identification purposes only, and we are in no way implying that our products are original equipment parts. Prices subject to change without notice.



# Replaces Jacobsen Fairway Parts

Cutting Unit

Minuteman Roller System



Item No	R&R Part No.	OEM Part No.	Description	Qty Req	Price Each	Order Quantity
---------	--------------	--------------	-------------	---------	------------	----------------

## Complete Minuteman Roller Systems

1	<b>RMJ9022</b>		Minuteman Rear Grooved Roller System	0	<b>467.15</b>	
---	----------------	--	--------------------------------------	---	---------------	--

*Detail Description: Complete roller systems include roller and two brackets with bearings.:*

2	<b>RMJ9023</b>		Minuteman Rear Smooth Roller System	0	<b>454.20</b>	
---	----------------	--	-------------------------------------	---	---------------	--

*Detail Description: Complete roller systems include roller and two brackets with bearings.:*

## Minuteman Rollers Only

3	<b>RM534</b>		Minuteman Grooved Roller Only	0	<b>364.30</b>	
---	--------------	--	-------------------------------	---	---------------	--

*Detail Description: Use with Minuteman Roller Bracket System Only:*

4	<b>RM535</b>		Minuteman Smooth Roller Only	0	<b>350.95</b>	
---	--------------	--	------------------------------	---	---------------	--

*Detail Description: Use with Minuteman Roller Bracket System Only:*

## Other Parts Available

5	<b>RJ931</b>		Bracket - Rear LH	0	<b>57.45</b>	
---	--------------	--	-------------------	---	--------------	--

6	<b>RJ932</b>		Bracket - Rear RH	0	<b>57.45</b>	
---	--------------	--	-------------------	---	--------------	--

7	<b>RMMB157</b>		Bearing w/Locking Collar	0	<b>21.95</b>	
---	----------------	--	--------------------------	---	--------------	--

8	<b>RMM602</b>		Bolt - Carriage 5/16-18 x 2 Gr 5	0	<b>0.57</b>	
---	---------------	--	----------------------------------	---	-------------	--

9	<b>RMM603</b>		Nut - Hex 5/16-18	0	<b>0.14</b>	
---	---------------	--	-------------------	---	-------------	--

10	<b>R446136</b>	446134, 446136	Washer - Lock 5/16 Zinc	0	<b>0.15</b>	
----	----------------	-------------------	-------------------------	---	-------------	--

11	<b>R453009</b>	3256-23, 452004, 452006, 452008, 453009	Washer - Flat 5/16 SAE	0	<b>0.14</b>	
----	----------------	---	------------------------	---	-------------	--

12	<b>RMM3</b>		End Hub - 7/8 ID	0	<b>10.35</b>	
----	-------------	--	------------------	---	--------------	--

<p>All original equipment manufacturers names and part numbers are used for identification purposes only, and we are in no way implying that our products are original equipment parts. Prices subject to change without notice.</p>
--