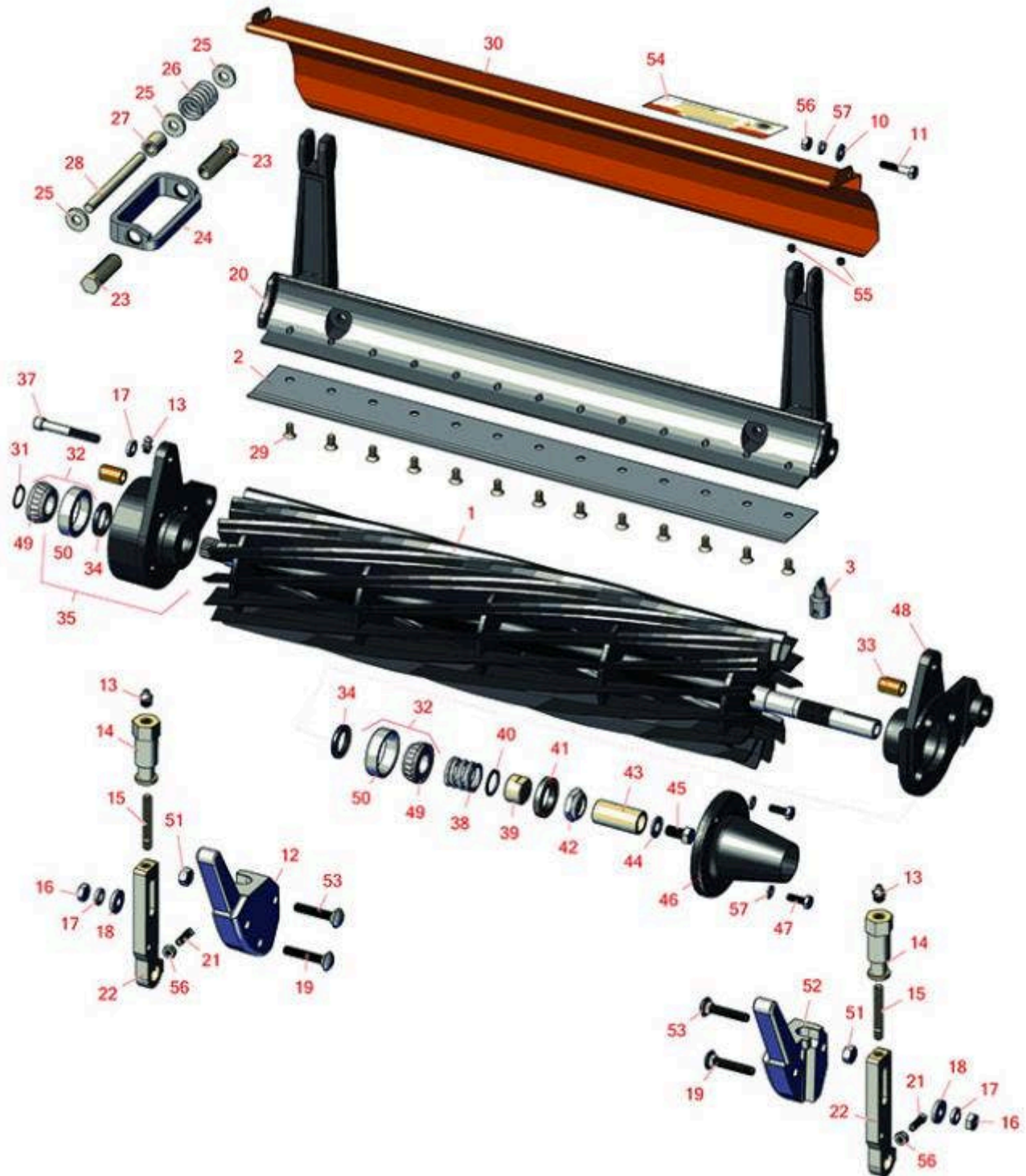




# Replaces Jacobsen Eclipse 122 Parts

Cutting Unit  
Reel & Bedknife



All original equipment manufacturers names and part numbers are used for identification purposes only, and we are in no way implying that our products are original equipment parts. Prices subject to change without notice.



# Replaces Jacobsen Eclipse 122 Parts

Cutting Unit  
Reel & Bedknife



Item No	R&R Part No.	OEM Part No.	Description	Qty Req	Price Each	Order Quantity
---------	--------------	--------------	-------------	---------	------------	----------------

## R&R Reels, Lifetime Guaranteed

1	<b>R4172945</b>	4104640	Reel - 11 Blade	1	<b>304.60</b>	
---	-----------------	---------	-----------------	---	---------------	--

*Detail Description:* R&R Reel blades are manufactured from high carbon-boron alloy steel and then hardened to RC46-49 to match the temper of our bedknives and original equipment bedknives. All R&R Reels are cylindrically ground on bearing surfaces and then relief ground. Reels are then precision computer balanced for extended bearing and reel life. R&R Products Reels are guaranteed against defects in material and workmanship for the life of the reel under normal use.:

## R&R 22" Bedknives, Lifetime Guaranteed

2	<b>R503478</b>	101260, 503028, 503478, 549504	Bedknife - Thin .125-.219 HOC	1	<b>41.75</b>	
---	----------------	---	-------------------------------	---	--------------	--

*Detail Description:* R&R Bedknives are manufactured from high carbon-boron alloy steel and then hardened to RC46-49 to match the temper of our reel blades and original equipment reels. Bedknives are surface ground on the top and front edge and straightened three times before being packaged with oil for rust prevention. All R&R Bedknives now have an increased front edge grind for added life. All R&R Bedknives are guaranteed against defects in material and workmanship under normal use for the life of the part.:

2	<b>R503477</b>	101261, 503027, 503477, 549397	Bedknife - Thick .156-.438 HOC	1	<b>40.05</b>	
---	----------------	---	--------------------------------	---	--------------	--

*Detail Description:* R&R Bedknives are manufactured from high carbon-boron alloy steel and then hardened to RC46-49 to match the temper of our reel blades and original equipment reels. Bedknives are surface ground on the top and front edge and straightened three times before being packaged with oil for rust prevention. All R&R Bedknives now have an increased front edge grind for added life. All R&R Bedknives are guaranteed against defects in material and workmanship under normal use for the life of the part.:

## R&R 22" Razor Tool Steel Bedknives, Lifetime Guaranteed

2	<b>R101520</b>		Bedknife - Razor Tool Steel - 22 Micro Cut	1	<b>99.65</b>	
---	----------------	--	--	---	--------------	--

All original equipment manufacturers names and part numbers are used for identification purposes only, and we are in no way implying that our products are original equipment parts. Prices subject to change without notice.



# Replaces Jacobsen Eclipse 122 Parts

Cutting Unit  
Reel & Bedknife



Item No	R&R Part No.	OEM Part No.	Description	Qty Req	Price Each	Order Quantity
---------	--------------	--------------	-------------	---------	------------	----------------

*Detail Description: R&R Razor bedknives are manufactured from premium alloy tool steel steel and then hardened to RC48-51 to match the temper of our Razor reel blades and original equipment premium series reels. Bedknives are surface ground on the top and front edge and specially packaged for rust prevention. All R&R Bedknives now have an increased front edge grind for added life. All R&R Bedknives are guaranteed against defects in material and workmanship under normal use for the life of the part. You can expect up to double the life over standard bedknives.:*

2	<b>R101521</b>		Bedknife - Razor Tool Steel - 22 Tournament Cut	1	<b>99.65</b>	
---	----------------	--	---	---	--------------	--

*Detail Description: R&R Razor bedknives are manufactured from premium alloy tool steel steel and then hardened to RC48-51 to match the temper of our Razor reel blades and original equipment premium series reels. Bedknives are surface ground on the top and front edge and specially packaged for rust prevention. All R&R Bedknives now have an increased front edge grind for added life. All R&R Bedknives are guaranteed against defects in material and workmanship under normal use for the life of the part. You can expect up to double the life over standard bedknives.:*

## Service Tools

3	<b>R101272T</b>		Bedknife Screw Driver Tool	0	<b>37.45</b>	
---	-----------------	--	----------------------------	---	--------------	--

*Tech Note: Easily install and remove bed knife screws with the help of a ratchet. Tool manufactured with hardened alloy steel.:*

*Detail Description: Easily install and remove bed knife screws with the help of a ratchet. Tool manufactured with hardened alloy steel.:*

## Other Parts Available

10	<b>R453023</b>	453023	Washer - Flat 1/4	2	<b>0.13</b>	
11	<b>R400112</b>	400112, 400114	Bolt - Hex HD 1/4-20 x 1-1/4	2	<b>0.40</b>	
12	<b>R241827</b>	241827, 446136	Bracket - LH Grass Catcher	1	<b>76.20</b>	
13	<b>R302-5</b>	302-5, 471214, 471223, 471226	Fitting - Grease	2	<b>0.30</b>	

All original equipment manufacturers names and part numbers are used for identification purposes only, and we are in no way implying that our products are original equipment parts. Prices subject to change without notice.



# Replaces Jacobsen Eclipse 122 Parts

Cutting Unit  
Reel & Bedknife



Item No	R&R Part No.	OEM Part No.	Description	Qty Req	Price Each	Order Quantity
14	R365009	3005692, 365009, 365170, 441674	Knob - Adjusting Roller	2	20.40	
15	R343616	343616, 443102	Stud	2	7.90	
16	R443106	443106	Nut - 5/16-18 Y/Zinc Plated	2	0.20	
17	R446136	446134, 446136	Washer - Lock 5/16 Zinc	2	0.15	
18	R364441	364441, 366641	Washer - Flat 5/16x7/8	2	2.30	
19	R441674	441674	Screw - 5/16-18 x 1-3/4 Carriage	2	0.74	
20	R5000457	5000457	Bed Bar - 22 in	1	332.95	
21	R352737	352737	Screw - Set 1/4 x 7/8 Sq Head	2	0.72	
22	R2000072	2000072, 471219	Bracket - Roller	2	21.55	
23	R366726	366726	Bolt - Special - Bed Knife Adj.	4	16.15	
24	R3001600	3001600, 412017	Block - Bedknife Adjusting	2	25.15	
25	R366653	366653	Spacer	6	4.05	
26	R366709	366709	Spring	2	6.25	
27	R367512	367512	Spacer - Bedknife Adj	2	4.15	
28	R366727	352437, 366727	Rod - Bedknife Block	2	6.05	
29	R101272	101272, 3009138, 402578, 800813	Screw - Bedknife 1/4-20 x 1/2	13	0.35	

All original equipment manufacturers names and part numbers are used for identification purposes only, and we are in no way implying that our products are original equipment parts. Prices subject to change without notice.



# Replaces Jacobsen Eclipse 122 Parts

Cutting Unit  
Reel & Bedknife



Item No	R&R Part No.	OEM Part No.	Description	Qty Req	Price Each	Order Quantity
30	<b>R4139660</b>	4139660	Grass Shield - 22 in	1	<b>58.70</b>	
30	<b>R5003183</b>	5003183	Grass Shield - 22 in	1	<b>83.85</b>	
31	<b>R458013</b>	458013	Ring - Retaining	1	<b>0.57</b>	
32	<b>R500534</b>	500534, R500534	Bearing - with Cup	1	<b>12.40</b>	
<i>Detail Description: Kit includes: 1 ea R254-78- Bearing Cone &amp; R254-79 Bearing Cone:</i>						
33	<b>R545940</b>	2500759, 545940	Bushing	1	<b>8.50</b>	
34	<b>R366650</b>	366650	Seal	1	<b>8.05</b>	
35	<b>R1000447</b>	1000447	Bearing Housing - RH	1	<b>136.95</b>	
<i>Detail Description: Includes R545940, R366650, R254-79 &amp; R302-5:</i>						
37	<b>R4105360</b>	4105360	Bolt - Soc HD Cap 5/16-18 x 2-1/4	3	<b>0.75</b>	
38	<b>R363047</b>	348846, 363047	Spring - Reel	1	<b>5.20</b>	
39	<b>R364900</b>	364900	Nut - Reel Tension	1	<b>10.30</b>	
40	<b>R304745</b>	304745	Washer - Reel	1	<b>0.74</b>	
41	<b>R364170</b>	364170, 366648	Seal	1	<b>5.75</b>	
42	<b>R3296-15</b>	3296-15, 367029, 444742	Locknut - 3/4-16 Nylon Jam	1	<b>2.30</b>	
43	<b>R367164</b>	367164	Spacer - Reel	1	<b>5.70</b>	
44	<b>R453011</b>	453011	Washer - Flat 3/8 SAE Y/Zinc	1	<b>0.12</b>	
45	<b>R400294</b>	400294	Screw - 3/8 24 x 3/4 Hex C/Zinc	1	<b>1.50</b>	

All original equipment manufacturers names and part numbers are used for identification purposes only, and we are in no way implying that our products are original equipment parts. Prices subject to change without notice.



# Replaces Jacobsen Eclipse 122 Parts

Cutting Unit  
Reel & Bedknife



Item No	R&R Part No.	OEM Part No.	Description	Qty Req	Price Each	Order Quantity
46	<b>R338675</b>	338675, 557775	Cover - Shaft End	1	<b>14.95</b>	
47	<b>R321-4</b>	321-4, 400108	Bolt - Hex HD 1/4-20 x 3/4	2	<b>0.55</b>	
48	<b>R1000446</b>	1000446	Bearing Housing - LH	1	<b>143.80</b>	
49	<b>R254-78</b>	254-78, 385174, 4121174, 4135152	Tapered Bearing Cone	1	<b>6.40</b>	
50	<b>R254-79</b>	254-79, 4121175	Cup - Bearing	1	<b>3.40</b>	
<i>Detail Description: Use R254-79M installation mandrel to properly install race.:</i>						
51	<b>R444718</b>	444718	Nut - 5/16-18 Center Lock YZ	4	<b>0.48</b>	
52	<b>R241828</b>	241828, 453023	Bracket - RH Grass Catcher	1	<b>76.20</b>	
53	<b>R441677</b>	441677	Bolt - Carriage 5/16-18 x 1-1/2	4	<b>0.69</b>	
54	<b>R354083</b>	354083, 361877, 4127335	Decal - Danger	2	<b>1.35</b>	
55	<b>R3008974</b>	3008974	Rubber Bumper	4	<b>2.45</b>	
56	<b>R443102</b>	443102	Nut - 1/4-20 Yellow Zinc	4	<b>0.23</b>	
57	<b>R3253-3</b>	3253-3, 446128, 446130	Washer - Lock 1/4	2	<b>0.12</b>	

All original equipment manufacturers names and part numbers are used for identification purposes only, and we are in no way implying that our products are original equipment parts. Prices subject to change without notice.