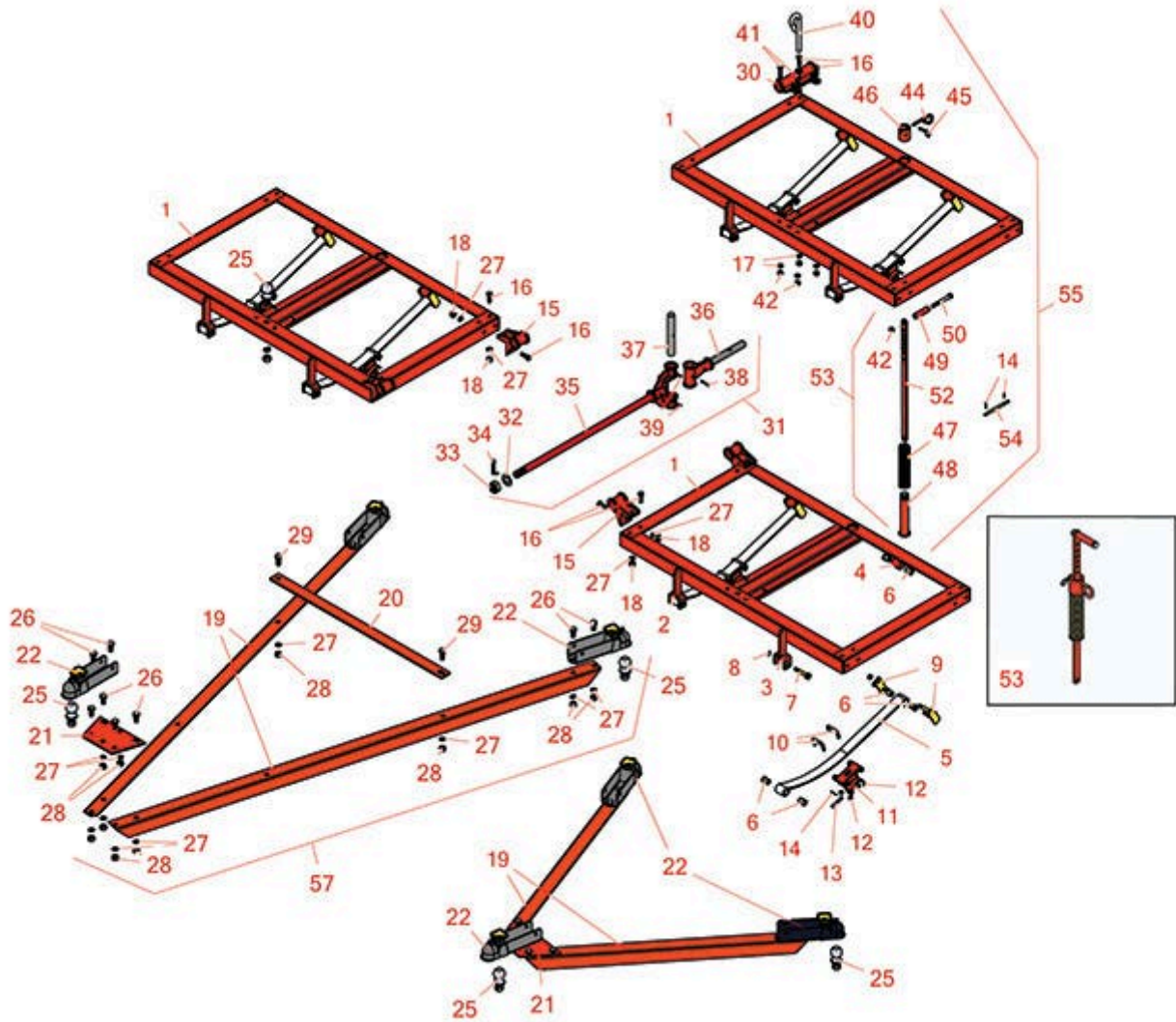




Replaces Jacobsen Blitzer Parts

Pull Frames
Pull Frame Parts



All original equipment manufacturers names and part numbers are used for identification purposes only, and we are in no way implying that our products are original equipment parts. Prices subject to change without notice.



Replaces Jacobsen Blitzer Parts

Pull Frames

Pull Frame Parts



Item No	R&R Part No.	OEM Part No.	Description	Qty Req	Price Each	Order Quantity
1	R110040	110040	Frame - Replaces Blitzer	1	752.95	
<i>Tech Note: Includes: 2 ea: R318009 Hanger; 1ea: R110041 Bracket & R110042 Bracket:</i>						
2	R110041	110041	Bracket - Front Spring RH	1	41.15	
3	R110042	110042	Bracket - Front Spring LH	1	41.15	
4	R318009	318009	Hanger - Spring	2	13.60	
5	R110024	110024	Spring - Fits Blitzer Frame	2	62.85	
<i>Tech Note: Must order in sets of 2:</i>						
6	R318006	318006	Bushing - Rubber	12	3.15	
7	R318005	318005	Bolt	2	14.85	
8	R444730	444730	Nut - 7/16-20 Hex	2	0.47	
9	R113259	113259	Shackle - Spring	2	14.60	
10	R318010	318010	U-Bolt	4	3.85	
11	R204863	204863	Perch - Spring Frame	2	59.10	
12	R444744	444744	Locknut - 3/8-24	8	0.36	
13	R325390	325390	Pin - Rod End	2	2.85	
14	R460028	460028	Pin - Cotter 1/8 x 1	4	0.34	
15	R204860	204860	Hinge - Side	4	35.95	
16	R400442	400442	Screw - 1/2 20 x 1-1/2 Hex	8	2.35	
17	R446154	446152, 446154	Washer - Lock 1/2	12	0.26	
18	R444816	444816, 445667	Nut - 1/2-20 ESNA	8	1.60	
19	R318013	318013	Angle - 96 Tongue	2	111.90	

All original equipment manufacturers names and part numbers are used for identification purposes only, and we are in no way implying that our products are original equipment parts. Prices subject to change without notice.



Replaces Jacobsen Blitzer Parts

Pull Frames

Pull Frame Parts



Item No	R&R Part No.	OEM Part No.	Description	Qty Req	Price Each	Order Quantity
19	R318017	318017	Angle - 48 Pull Tongue	2	98.75	
20	R318015	318015	Bar - Cross 96 Tongue	1	47.95	
21	R318014	318014	Plate - 96 Pull Tongue	1	19.90	
21	R318018	318018	Plate - 48 Pull Tongue	1	22.70	
22	R131224	131224	Hitch - Fits 2 Ball	2	92.35	
25	R110466	110466	Hitch - Ball Assy	1	24.05	
25	R318027	318027	Ball - Hitch 2 w/Lockwasher and Nut	2	23.25	
<i>Tech Note: Includes lockwasher and nut.:</i>						
26	R400610	400610	Bolt - Hex HD 5/8-11 x 1-1/4	10	2.35	
27	R447224	447224	Washer - Lock 5/8 Int Star Z	12	0.40	
28	R443126	443126	Locknut - 5/8-11 Center Zinc	12	2.35	
29	R400612	400612	Bolt - Hex HD 5/8-11 x 1-1/2	2	2.55	
30	R204867	204867	Hinge - Rear Frame	1	82.30	
31	R110032	110032	Rod - w/Swivel Hinge Assy	1	344.55	
<i>Tech Note: Includes: 1 ea: R110028 Rod, R110029 Rod, R150652 Washer, R318019 Pin, R445720 Nut, R460068 Pin & R461345 Pin:</i>						
32	R150652	150652, 325262	Washer - 2 Roller	1	0.84	
33	R445720	445720	Nut - 1-1/8 -7 Zinc Slotted	1	5.15	
34	R460068	460068	Pin - Cotter 1/4 x 2	1	0.33	
35	R110028	110028	Rod - w/Front Swivel Hinge	1	222.75	
36	R110029	110029	Rod - w/Rear Swivel Hinge	1	166.60	
37	R318019	318019	Pin - Hinge	1	15.95	

All original equipment manufacturers names and part numbers are used for identification purposes only, and we are in no way implying that our products are original equipment parts. Prices subject to change without notice.



Replaces Jacobsen Blitzer Parts

Pull Frames

Pull Frame Parts



Item No	R&R Part No.	OEM Part No.	Description	Qty Req	Price Each	Order Quantity
38	R461345	461345	Pin - 1/4 x 2 Center Grooved	1	2.15	
39	R302-5	302-5, 471214, 471223, 471226	Fitting - Grease	2	0.27	
40	R318012	318012	Pin - Rear Frame Hinge	1	14.55	
41	R400444	400444	Bolt - Hex HD 1/2-20 x 1-3/4	2	1.45	
42	R32146-11	443120	Locknut - 1/2-20 Center	4	0.78	
44	R318001	318001	Pin - Lock	1	5.70	
45	R460312	460312	Pin - Hair Cotter	1	0.69	
46	R358414	358414	Nut - Adjusting Lever	1	37.50	
47	R316133	316133	Spring - Lever Fits Blitzer	1	24.95	
48	R110031	110031	Tube - Outer Lever Assy	1	36.50	
49	R319873	319873	Handle - Spring Lever	1	4.70	
50	R400456	400456	Bolt - Handle	1	2.85	
52	R335677	325296, 335677	Lever - Fits Blitzer	1	36.95	
53	R110030	110030	Lever Assy	1	133.35	
<i>Tech Note: Includes: 1ea: R110031 Tube, R316133 Spring, R318001 Pin, R319873 Handle, R32146-11 Locknut, R335677 Lever, R358414 Nut, R400456 Bolt, & R460312 Pin:</i>						
54	R316478	316478	Rod - Fits Blitzer Skid	1	7.45	
55	R73411	73411	Frame - Assy	1	874.05	
<i>Tech Note: Includes: R110030 Lever & R110040 Frame:</i>						
56	R73403	73403	Tongue - 48 Pull Assy	1	563.75	
<i>Tech Note: Use with 3 OR 5 Gang Only. Includes: 10 ea.: R400610 Bolts, R443126 Locknuts, R447224 Washers; 3 ea: R131224 Hitch, R318027 Ball; 2 ea: R318017; & 1 ea: R318018 Plate:</i>						

All original equipment manufacturers names and part numbers are used for identification purposes only, and we are in no way implying that our products are original equipment parts. Prices subject to change without notice.



Replaces Jacobsen Blitzer Parts

Pull Frames

Pull Frame Parts



Item No	R&R Part No.	OEM Part No.	Description	Qty Req	Price Each	Order Quantity
57	R73404	73404	Tongue - 96 Pull Assy	1	630.85	

Tech Note: Use With 7, 9 or 11 Gang Units. Includes: 12 ea: R443126 Locknuts, R447224 Washers; 10 ea: R400610 Bolts; 3 ea: R131224 Hitch, R318027 Ball; 2 ea: R400612 Bolt, R318013 Angle; & 1 ea: R318014 Plate & R318015 Bar:

All original equipment manufacturers names and part numbers are used for identification purposes only, and we are in no way implying that our products are original equipment parts. Prices subject to change without notice.