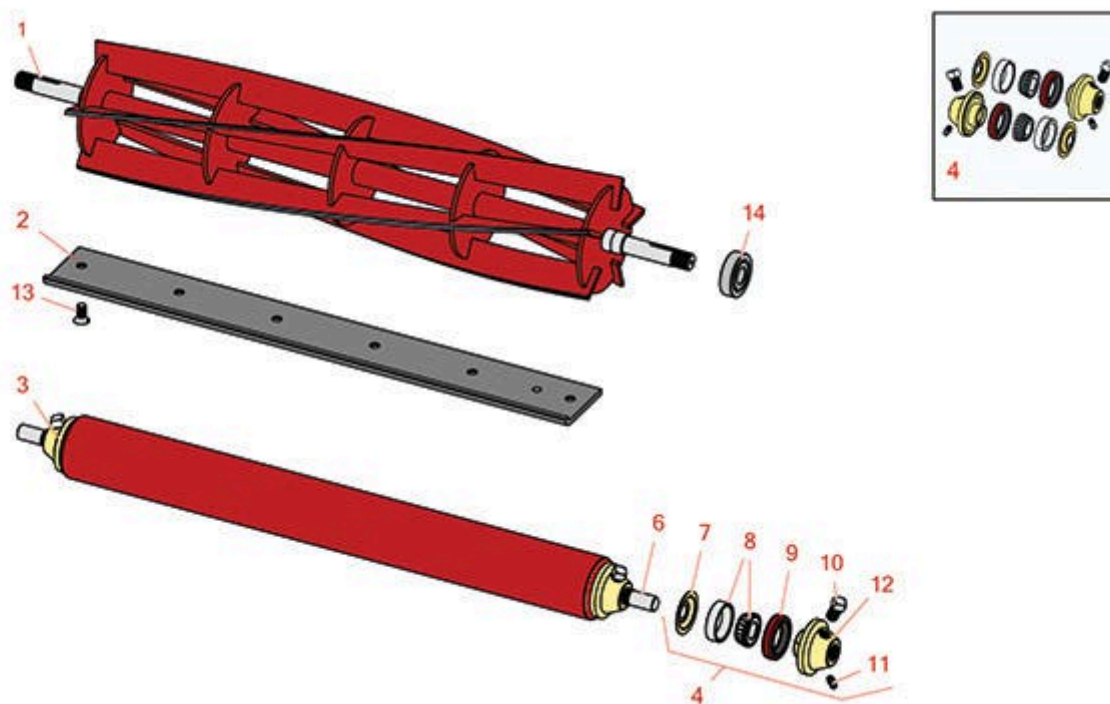




Replaces Brouwer Triplex 376A Parts

Cutting Unit

Reel Bedknife & Roller



All original equipment manufacturers names and part numbers are used for identification purposes only, and we are in no way implying that our products are original equipment parts. Prices subject to change without notice.



Replaces Brouwer Triplex 376A Parts

Cutting Unit

Reel, Bedknife & Roller



Item No	R&R Part No.	OEM Part No.	Description	Qty Req	Price Each	Order Quantity
---------	--------------	--------------	-------------	---------	------------	----------------

R&R Reels, Lifetime Guaranteed

1	R600210	LMA0101-5	Reel - 5 Blade Wing Unit	2	313.40	
---	----------------	-----------	--------------------------	---	---------------	--

Detail Description: R&R Reel blades are manufactured from high carbon-boron alloy steel and then hardened to RC46-49 to match the temper of our bedknives and original equipment bedknives. All R&R Reels are cylindrically ground on bearing surfaces and then relief ground. Reels are then precision computer balanced for extended bearing and reel life. R&R Products Reels are guaranteed against defects in material and workmanship for the life of the reel under normal use.:

1	R600211	LMA0201-5	Reel - 5 Blade Rear Unit	1	332.85	
---	----------------	-----------	--------------------------	---	---------------	--

Detail Description: R&R Reel blades are manufactured from high carbon-boron alloy steel and then hardened to RC46-49 to match the temper of our bedknives and original equipment bedknives. All R&R Reels are cylindrically ground on bearing surfaces and then relief ground. Reels are then precision computer balanced for extended bearing and reel life. R&R Products Reels are guaranteed against defects in material and workmanship for the life of the reel under normal use.:

1	R600212	LMA0101-7	Reel - 7 Blade	2	331.95	
---	----------------	-----------	----------------	---	---------------	--

Detail Description: R&R Reel blades are manufactured from high carbon-boron alloy steel and then hardened to RC46-49 to match the temper of our bedknives and original equipment bedknives. All R&R Reels are cylindrically ground on bearing surfaces and then relief ground. Reels are then precision computer balanced for extended bearing and reel life. R&R Products Reels are guaranteed against defects in material and workmanship for the life of the reel under normal use.:

1	R600213	LMA0201-7	Reel - 7 Blade - Rear Unit	1	352.30	
---	----------------	-----------	----------------------------	---	---------------	--

Detail Description: R&R Reel blades are manufactured from high carbon-boron alloy steel and then hardened to RC46-49 to match the temper of our bedknives and original equipment bedknives. All R&R Reels are cylindrically ground on bearing surfaces and then relief ground. Reels are then precision computer balanced for extended bearing and reel life. R&R Products Reels are guaranteed against defects in material and workmanship for the life of the reel under normal use.:

R&R Bedknives, Lifetime Guaranteed

2	RLMA0103	LMA0103	Bedknife - Wing Units	2	52.75	
---	-----------------	---------	-----------------------	---	--------------	--

All original equipment manufacturers names and part numbers are used for identification purposes only, and we are in no way implying that our products are original equipment parts. Prices subject to change without notice.



Replaces Brouwer Triplex 376A Parts

Cutting Unit

Reel, Bedknife & Roller



Item No	R&R Part No.	OEM Part No.	Description	Qty Req	Price Each	Order Quantity
---------	--------------	--------------	-------------	---------	------------	----------------

Detail Description: R&R Bedknives are manufactured from high carbon-boron alloy steel and then hardened to RC46-49 to match the temper of our reel blades and original equipment reels. Bedknives are surface ground on the top and front edge and straightened three times before being packaged with oil for rust prevention. All R&R Bedknives now have an increased front edge grind for added life. All R&R Bedknives are guaranteed against defects in material and workmanship under normal use for the life of the part.:

2	RLMA0203	LMA0203	Bedknife - Rear Unit	1	56.95	
---	-----------------	---------	----------------------	---	--------------	--

Detail Description: R&R Bedknives are manufactured from high carbon-boron alloy steel and then hardened to RC46-49 to match the temper of our reel blades and original equipment reels. Bedknives are surface ground on the top and front edge and straightened three times before being packaged with oil for rust prevention. All R&R Bedknives now have an increased front edge grind for added life. All R&R Bedknives are guaranteed against defects in material and workmanship under normal use for the life of the part.:

R&R Rollers

3	R600200	LMAX1028	Roller - Front	2	233.15	
---	----------------	----------	----------------	---	---------------	--

Detail Description: with tapered Roller Bearings:

3	R600205	LMAX1035	Roller - Rear	1	241.35	
---	----------------	----------	---------------	---	---------------	--

Detail Description: with tapered Roller Bearings:

Overhaul Kits

4	R700505		Conversion Kit - Roller	0	133.80	
---	----------------	--	-------------------------	---	---------------	--

Detail Description: Includes: 2 each: R254-78 Bearing Cones, R254-79 Bearing Cups, R328062 Seals, R412063 Square Head Set Screws, R700501 Roller Ends & R700502 Grease Retainers.:

Other Parts Available

6	R600202		Shaft - Roller Fits Front Units	2	48.55	
---	----------------	--	---------------------------------	---	--------------	--

6	R600207		Shaft - Roller - Rear Roller	1	52.10	
---	----------------	--	------------------------------	---	--------------	--

7	R700502		Retainer - Grease	2	2.50	
---	----------------	--	-------------------	---	-------------	--

8	R500534		Bearing - with Cup	2	12.40	
---	----------------	--	--------------------	---	--------------	--

Detail Description: Kit includes: 1 ea R254-78- Bearing Cone & R254-79 Bearing Cone:

All original equipment manufacturers names and part numbers are used for identification purposes only, and we are in no way implying that our products are original equipment parts. Prices subject to change without notice.



Replaces Brouwer Triplex 376A Parts

Cutting Unit

Reel, Bedknife & Roller



Item No	R&R Part No.	OEM Part No.	Description	Qty Req	Price Each	Order Quantity
9	R328062		Seal - Roller	2	4.95	
10	R412063		Screw - Sq. HD. Set	2	1.35	
11	R302-5	M0004	Fitting - Grease	2	0.30	
12	R700501		Roller End - Regreasable	2	54.25	
13	RLM0104	LMA0104	Screw - Bedknife -Metric	7	0.78	
14	RB2031	B2031	Bearing - Reel	6	12.40	

All original equipment manufacturers names and part numbers are used for identification purposes only, and we are in no way implying that our products are original equipment parts. Prices subject to change without notice.