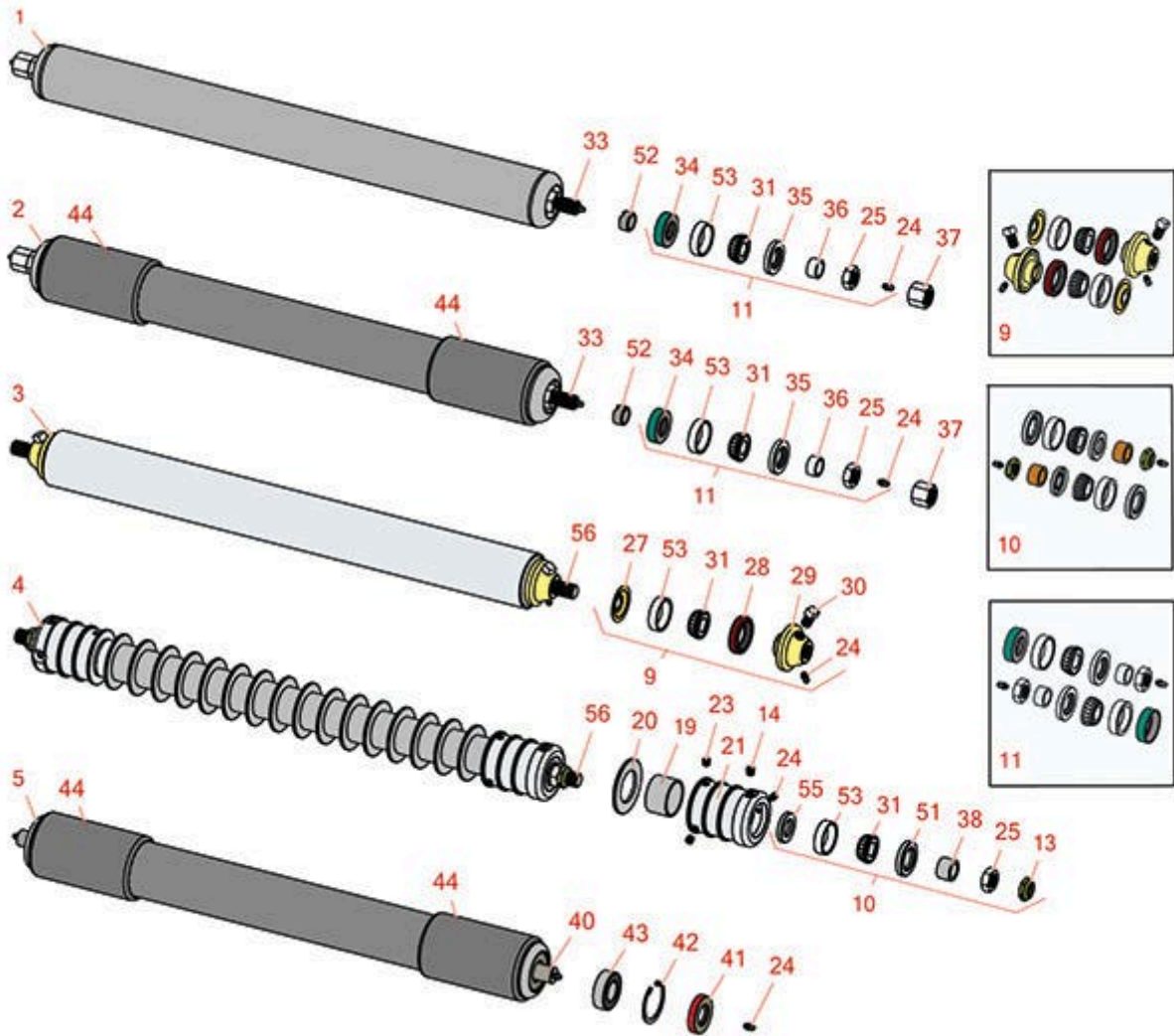




Replaces Brouwer 3/5/7 Gang Mower

Parts

Cutting Unit
Rollers



All original equipment manufacturers names and part numbers are used for identification purposes only, and we are in no way implying that our products are original equipment parts. Prices subject to change without notice.



Replaces Brouwer 3/5/7 Gang Mower

Parts

Cutting Unit
Rollers



Item No	R&R Part No.	OEM Part No.	Description	Qty Req	Price Each	Order Quantity
---------	--------------	--------------	-------------	---------	------------	----------------

R&R Rollers

1	RA61002	A61002	Roller - Smooth Tubular Steel	1	244.50	
---	----------------	--------	-------------------------------	---	---------------	--

Tech Note: Constructed with a through shaft, this heavy duty roller uses greasable tapered bearings for extended life.:

2	RA61003	A61003	Roller - Sleeved	1	257.35	
---	----------------	--------	------------------	---	---------------	--

Tech Note: Constructed with a through shaft, this outer sleeved heavy-duty roller uses greasable tapered bearings for extended life.:

3	R600500	A61003	Roller - Smooth Tubular Steel	1	233.75	
---	----------------	--------	-------------------------------	---	---------------	--

Tech Note: Constructed with a through shaft, this heavy duty roller uses greasable tapered bearings for extended life.:

4	R601243R		Roller - Grooved Repairable Steel	1	306.10	
---	-----------------	--	-----------------------------------	---	---------------	--

Tech Note: Constructed with a through shaft and greasable ball bearings. This roller can be repaired by unscrewing the ends and replacing the series of washers and spacers.:

5	RA11185	A11185	Roller - Sleeved	1	244.40	
---	----------------	--------	------------------	---	---------------	--

Tech Note: Constructed with a through shaft, this outer sleeved heavy duty roller uses greasable ball bearings.:

Overhaul Kits

9	R700505		Conversion Kit - Roller	0	127.40	
---	----------------	--	-------------------------	---	---------------	--

Tech Note: Includes: 2 each: R254-78 Bearing Cones, R254-79 Bearing Cups, R328062 Seals, R412063 Square Head Set Screws, R700501 Roller Ends & R700502 Grease Retainers.:

10	R100135		Overhaul Kit - Roller	0	73.55	
----	----------------	--	-----------------------	---	--------------	--

Tech Note: Includes 2 ea.:R302-5 Grease Fittings, R253-122 Seals, R253-117 Seals, R150674 Wear Sleeves, R254-78 Bearings, R254-79 Bearing Cups, & R3296-15 Locknuts:

11	R100205		Overhaul Kit - Roller	0	82.05	
----	----------------	--	-----------------------	---	--------------	--

Tech Note: Includes 2 ea.: RE1028 Seals, R253-111 Seals, RL4004 Wear Sleeves, R254-78 Bearings, R254-79 Bearing Cups, R302-5 Grease Fittings,& R3220-7 Nuts:

All original equipment manufacturers names and part numbers are used for identification purposes only, and we are in no way implying that our products are original equipment parts. Prices subject to change without notice.



Replaces Brouwer 3/5/7 Gang Mower

Parts

Cutting Unit
Rollers



Item No	R&R Part No.	OEM Part No.	Description	Qty Req	Price Each	Order Quantity
---------	--------------	--------------	-------------	---------	------------	----------------

Other Parts Available

13	R3296-15		Locknut - 3/4-16 Nylon Jam	1	2.15	
14	R170714		Fitting - Pressure Relief	2	2.25	
19	R150671		Spacer - 2 3/4 / 3 Rollers 13/16 L	0	1.45	
19	R150676		Spacer - 2-3/4 Dia x 1-1/4 L	0	3.75	
20	R150673		Washer - 3 Repairable Roller	0	1.45	
21	R150675		Roller - End - 3 Threaded	2	83.95	
23	R150691	F5205	Screw - Set Nyloc 3/8-16 x 3/8	4	1.10	
24	R302-5	M0004	Fitting - Grease	2	0.27	
25	R3220-7	C-10011, F7005	Nut - 3/4-16 Jam Zinc	2	2.55	
27	R700502		Retainer - Grease	2	2.35	
28	R328062		Seal - Roller	2	4.70	
29	R700501		Roller End - Regreasable	2	51.65	
30	R412063		Screw - Sq. HD. Set	2	1.25	
31	R254-78	B4512	Tapered Bearing Cone	2	6.05	
33	RA601079	A601079	Shaft - Roller	1	72.90	
34	RE1028	E1028	Seal - Inner Roller	2	7.15	
35	R253-111	E1029	Seal	2	5.30	
36	RL4004	L4004	Sleeve - Wear Roller	2	12.95	
37	RF7011	F7011	Nut - Hex Roller	2	9.70	
38	R150674		Sleeve - Wear 3/4 Plated	2	12.95	

All original equipment manufacturers names and part numbers are used for identification purposes only, and we are in no way implying that our products are original equipment parts. Prices subject to change without notice.



Replaces Brouwer 3/5/7 Gang Mower

Parts

Cutting Unit
Rollers



Item No	R&R Part No.	OEM Part No.	Description	Qty Req	Price Each	Order Quantity
40	R1022	M-01-D-1022	Shaft - Rear Roller	1	64.15	
41	RC-10024	C-10024	Seal - Roller	2	8.20	
42	RC-10025	C-10025	Ring - Retaining	2	2.15	
43	RC-10209	C-10209	Bearing - Ball Rear Roller	2	11.95	
44	R1184	M-01-D-1184	Sleeve - PVC Roller	2	17.35	
51	R253-117		Seal - Outer Triple Lip	2	4.20	
52	R600501		Bushing - Slotted	2	13.95	
53	R254-79	B4015	Cup - Bearing	2	3.20	
<i>Tech Note: Use R254-79M installation mandrel to properly install race.:</i>						
55	R253-122		Seal	2	3.55	
56	R600105		Shaft - Roller	1	50.20	

All original equipment manufacturers names and part numbers are used for identification purposes only, and we are in no way implying that our products are original equipment parts. Prices subject to change without notice.