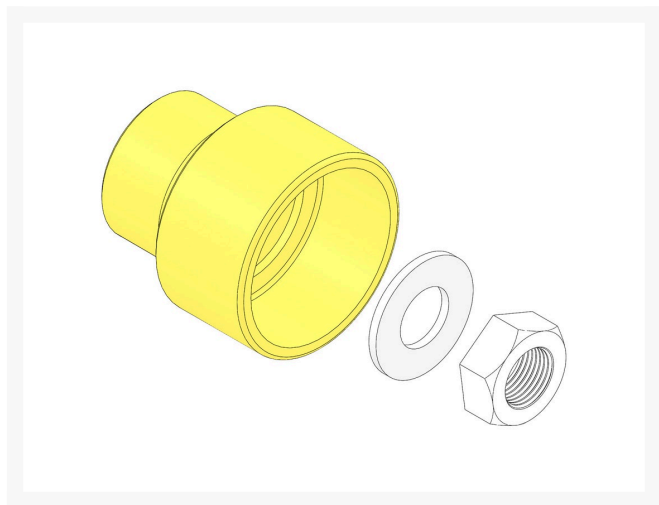




Bearing Puller - Fits Groomer Roller

R262



Details

R&R Products developed a special line of tools to remove tapered bearing races from rollers, gear boxes and the outer ball bearing races left inside roller ends, in case of a catastrophic bearing failure. The R&R Puller contains a mandrel and spreader which secures behind the tapered bearing race or to the inside ball bearing groove. The tube assembly, which contains its own tapered bearing pulling system, is then placed over the mandrel and spreader to easily remove the outer race. Mandrels and spreaders are manufactured by R&R Products from high carbon chromium vanadium steel and heat treated for maximum strength. Excellent tool to quickly remove bearings and shafts from R390899 and R390900 groomer rollers. Puller Fits Jacobsen & R&R 2-1/2" Groomer Rollers

Specifications

| | |
|--------------|--------------|
| Manufacturer | R&R Products |
|--------------|--------------|

Fits Models

Jacobsen Greens King IV
Jacobsen Greens King V & VI
Jacobsen PGM 19
Jacobsen PGM 22

Replacement Parts

| | |
|------|------------------------------|
| R263 | Washer - Stainless |
| R264 | Nut - Jam Hardened 7/8-14 |

R&R Products Inc

3334 E Milber St Tucson, 85714
800-528-3446

<https://www.rrproducts.com/>