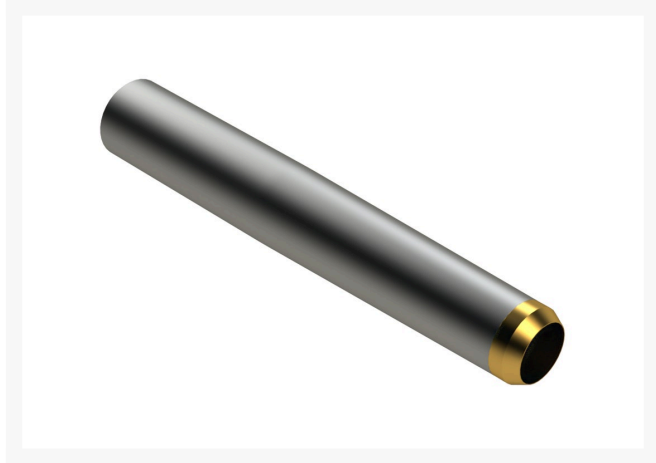




Alloy Hollow Tine with Carbide Tip - .750MT x 4.750L x .630OD R201512



Details

Carbide-Tipped Alloy Hollow Tine construction uses the same special high carbon alloy steel tubing and hardened to RC45-48 as the alloy hollow tines, with the addition of a carbide tip for even longer life. The advantage of using carbide-tipped tines is the ability to maintain your maximum aerating depth consistently over the life of the tines. You can expect these tines to last 6-8 times longer than the R&R Standard Hollow Tines. Carbide-tipped tines are not recommended in rocky soil conditions, as carbide, which is extremely wear resistant, can break when encountering hard impacts in rocks.

Replaces

R&R Products	R108-9143
Toro	108-9143

Specifications

Manufacturer	R&R Products
A - Tine Type	Alloy Hollow with Carbide Tip
B - Tine Mounting Dia.	.750 in (19mm)
C - Tine Length	4.75 in (121mm)
Carbide Tip	Carbide Tip
D - Tine Tip Outside (Hole) Dia.	.630 in (16mm)
E - Tine Tip Inside (Core) Dia.	.480 in (1.22mm)
F - Tine Wall Thickness	.072 in (1.8mm)

Fits Models

Jacobsen GA-24

R&R Products Inc

3334 E Milber St Tucson, 85714
800-528-3446

<https://www.rrproducts.com/>



Alloy Hollow Tine with Carbide Tip - .750MT x 4.750L x .630OD R201512



Ryan Greensaire II
Toro Greens Aerator
Toro ProCore 1298
Toro ProCore 440
Toro ProCore 648
Toro ProCore 660
Toro ProCore 864
Toro ProCore 880
Toro ProCore 648s

R&R Products Inc

3334 E Milber St Tucson, 85714
800-528-3446

<https://www.rrproducts.com/>