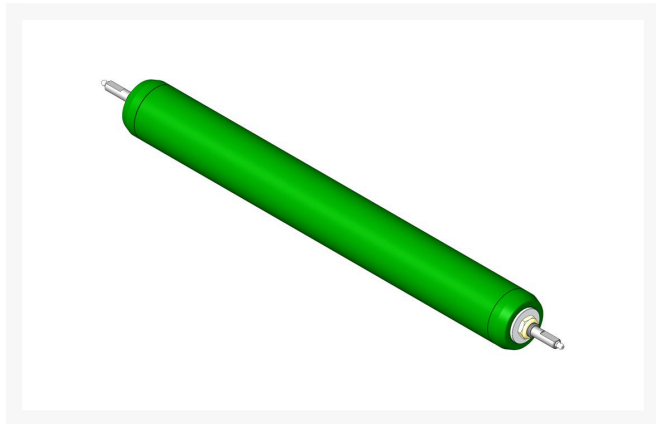




Roller - Smooth Tubular Steel

R170305



Details

Constructed with a through shaft, this heavy duty roller uses greasable tapered bearings for extended life.

Replaces

| | |
|----------|---------|
| Ransomes | LMSE079 |
|----------|---------|

Specifications

| | |
|--------------|--------------|
| Manufacturer | R&R Products |
| Roller Body | 3 in |
| Diameter | |
| Weight | 17 lb |

Fits Models

Ransomes 185, 285, 300, 305 & 405

Replacement Parts

| | |
|----------|-------------------------|
| R500534 | Bearing - with Cup |
| R170302 | Shaft |
| R170308 | Roller End - Solid 3 |
| R253-122 | Seal |
| R254-79 | Cup - Bearing |
| R254-78 | Tapered Bearing Cone |
| R253-117 | Seal - Outer Triple Lip |
| R5-4038 | Sleeve - Wear Reel |
| | Shaft |
| R150504 | Washer |
| R3296-15 | Locknut - 3/4-16 Nylon |
| | Jam |
| R302-5 | Fitting - Grease |

R&R Products Inc

3334 E Milber St Tucson, 85714
800-528-3446

<https://www.rrproducts.com/>