



Echo CS-590 Timber Wolf Chainsaw - 20in. 59.8CC Rear Handle RECCS590-20

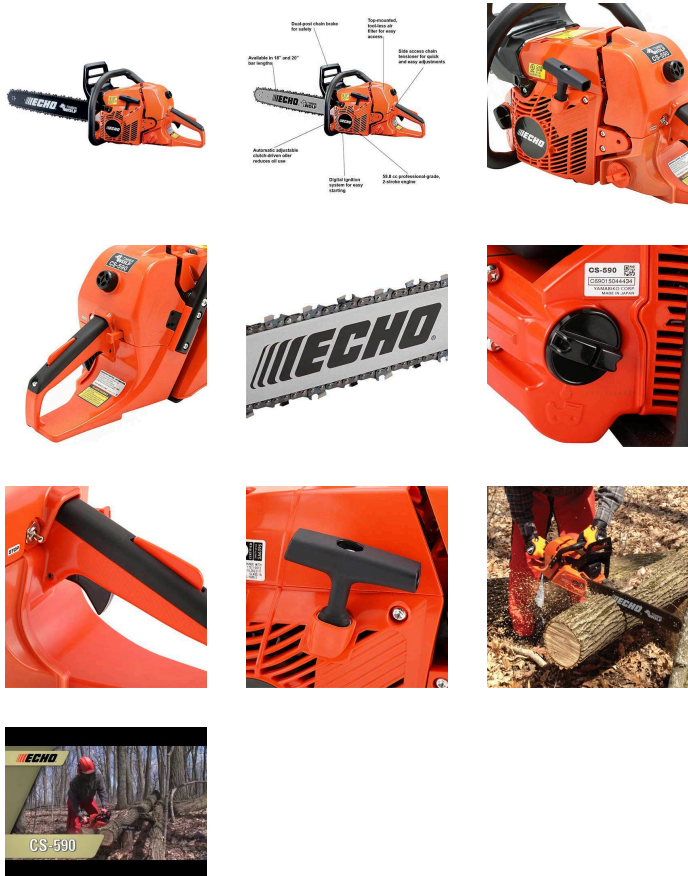


Details

The Timber Wolf 59.8cc, 4 HP professional-grade saw is setting a new standard for toughness. More powerful than comparable competitive saws with optimum performance, easy starting, easy operation and quick maintenance. Built for the toughest environments with a heavy-duty easy-access air filter, decompression valve, digital ignition system and G-Force engine air pre-cleaner. Other features include spring anti-vibration system, side-access chain tensioner, clutch driven oiler for reduced oil consumption, dual post chain brake system and translucent fuel tank. 3/8" Chain. 59.8cc. 13.3 lbs. 1 year warranty.

Please note: This product is considered either bulky or otherwise restricted from shipment by air, and will only be shipped ground freight.

- 59.8 cc, 4 hp professional-grade engine
- Heavy-duty easy-access air filter
- Anti-vibration system
- Side-access chain tensioner
- Dual post chain brake system
- Translucent fuel tank
- 3/8" chain



Specifications

Manufacturer	Echo
Bar Length	20 in
Carburetor	Butterfly
Chain Pitch	.375 in
Engine Displacement	59.8 cc (3.65 cu in)
Fuel Capacity	21.8 fl oz
Ignition System	Digital
Oiling System	Automatic / Adjustable Clutch-Driven
Starting System	Standard



Echo CS-590 Timber Wolf Chainsaw - 20in. 59.8CC Rear Handle RECCS590-20



Weight (lbs) 13.3 lb

Replacement Parts

REC20DOAS3870C	Echo 20in Chainsaw Bar
REC72LPX70CQ	Echo Super 70 Chain For 20in Bar

R&R Products Inc

3334 E Milber St Tucson, 85714
800-528-3446

<https://www.rrproducts.com/>