



Echo CS-590 Timber Wolf Chainsaw - 18 in. 69.8CC Rear Handle

RECCS590-18

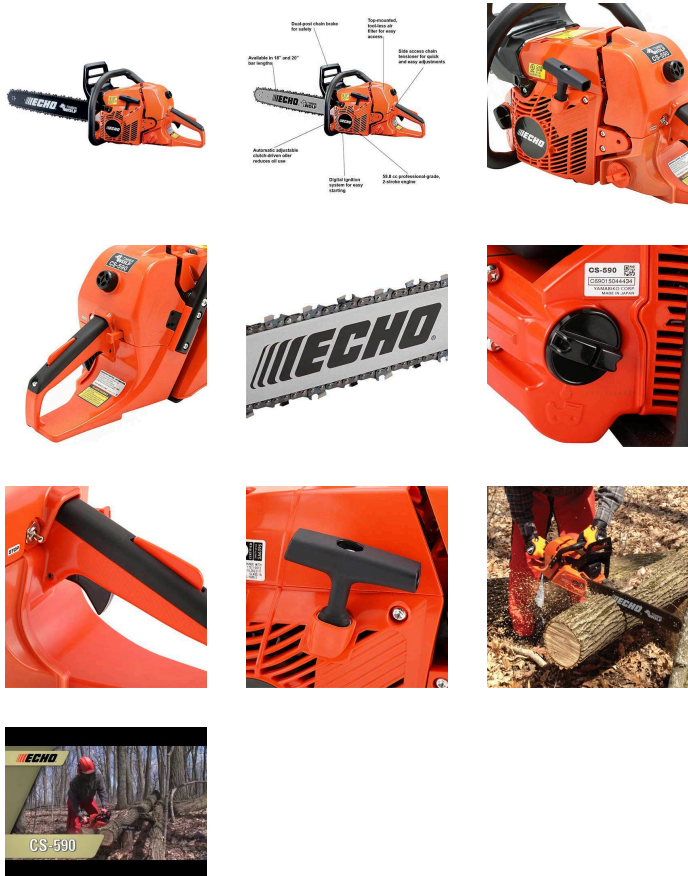


Details

The Timber Wolf 59.8cc, 4 HP professional-grade saw is setting a new standard for toughness. More powerful than comparable competitive saws with optimum performance, easy starting, easy operation and quick maintenance. Built for the toughest environments with a heavy-duty easy-access air filter, decompression valve, digital ignition system and G-Force engine air pre-cleaner. Other features include spring anti-vibration system, side-access chain tensioner, clutch driven oiler for reduced oil consumption, dual post chain brake system and translucent fuel tank. 3/8 Chain. 59.8cc. 13.3 lbs. 1 year warranty.

Please note: This product is considered either bulky or otherwise restricted from shipment by air, and will only be shipped ground freight.

- 59.8 cc, 4 hp engine
- 18" bar
- Easy starting
- Heavy-duty, easy-access air filter
- Decompression valve
- Anti-vibration system
- Side-access chain tensioner
- Dual post chain brake system



Specifications

Manufacturer	Echo
Bar Length	18 in
Carburetor	Butterfly-Valve Diaphragm (without Purge Pump)
Chain Pitch	.375 in
Engine Displacement	59.8 cc (3.65 cu in)
Fuel Capacity	21.8 fl oz
Ignition System	Digital



Echo CS-590 Timber Wolf Chainsaw - 18 in. 69.8CC Rear Handle

RECCS590-18



Oiling System	Automatic / Adjustable Clutch-Driven
Starting System	Standard
Weight (lbs)	13.3 lb

Replacement Parts

REC18DOAS3864C	Echo 18in Pro-Am Timberwolf Bar
REC72LPX64CQ	Echo Super 70 Chain For 18" Bar

R&R Products Inc

3334 E Milber St Tucson, 85714
800-528-3446

<https://www.rrproducts.com/>