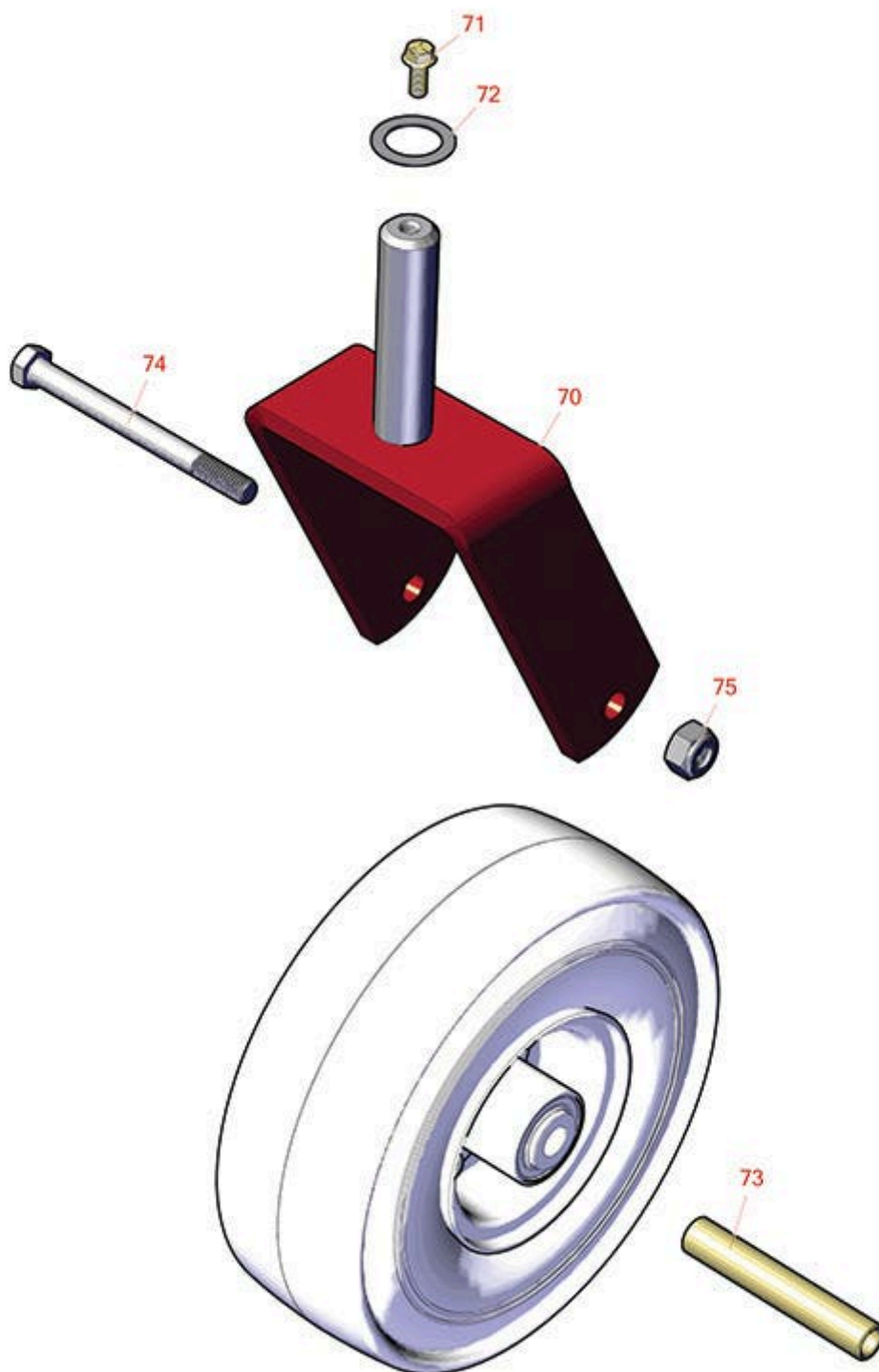




## Replaces Toro Titan ZX 6020 Parts

Zero Turn Mower with 60in Deck - Model 74843

Caster Wheel



All original equipment manufacturers names and part numbers are used for identification purposes only, and we are in no way implying that our products are original equipment parts. Prices subject to change without notice.



# Replaces Toro Titan ZX 6020 Parts

Zero Turn Mower with 60in Deck - Model 74843

Caster Wheel



| Item No | R&R Part No. | OEM Part No. | Description | Qty Req | Price Each | Order Quantity |
|---------|--------------|--------------|-------------|---------|------------|----------------|
|---------|--------------|--------------|-------------|---------|------------|----------------|

## Tires and Wheels

|   |              |  |  |   |             |  |
|---|--------------|--|--|---|-------------|--|
| 0 | <b>TIRES</b> |  | <a href="#">Click Here to View Complete Tire Selection</a> | 0 | <b>0.00</b> |  |
|---|--------------|--|--|---|-------------|--|

## Other Parts Available

|    |                     |   |                             |   |              |  |
|----|---------------------|---|-----------------------------|---|--------------|--|
| 70 | <b>R110-6634-01</b> | 110-6634-01   | Caster Fork Assy            | 2 | <b>54.95</b> |  |
| 71 | <b>R3234-47</b>     | 3234-47   | Bolt - Flanged Hx HD        | 2 | <b>0.97</b>  |  |
| 72 | <b>R10-8110</b>     | 10-8110   | Washer - Pivot Pin          | 2 | <b>1.05</b>  |  |
| 73 | <b>R104-3667</b>    | 104-3667  | Spanner - Wheel             | 2 | <b>4.45</b>  |  |
| 74 | <b>R325-22</b>      | 01-150-0650,<br>01-178-0844,<br>325-21,<br>325-22   | Bolt - Hx HD 1/2-13 x 5 1/2 | 2 | <b>3.45</b>  |  |
| 75 | <b>R3296-25</b>     | 30-3380,<br>32127-21,<br>32127-31,<br>3290-160,<br>3290-33,<br>3296-13,<br>3296-25,<br>3296-45,<br>329645 | Locknut - 1/2-13 Heavy ESNA | 2 | <b>2.30</b>  |  |

All original equipment manufacturers names and part numbers are used for identification purposes only, and we are in no way implying that our products are original equipment parts. Prices subject to change without notice.