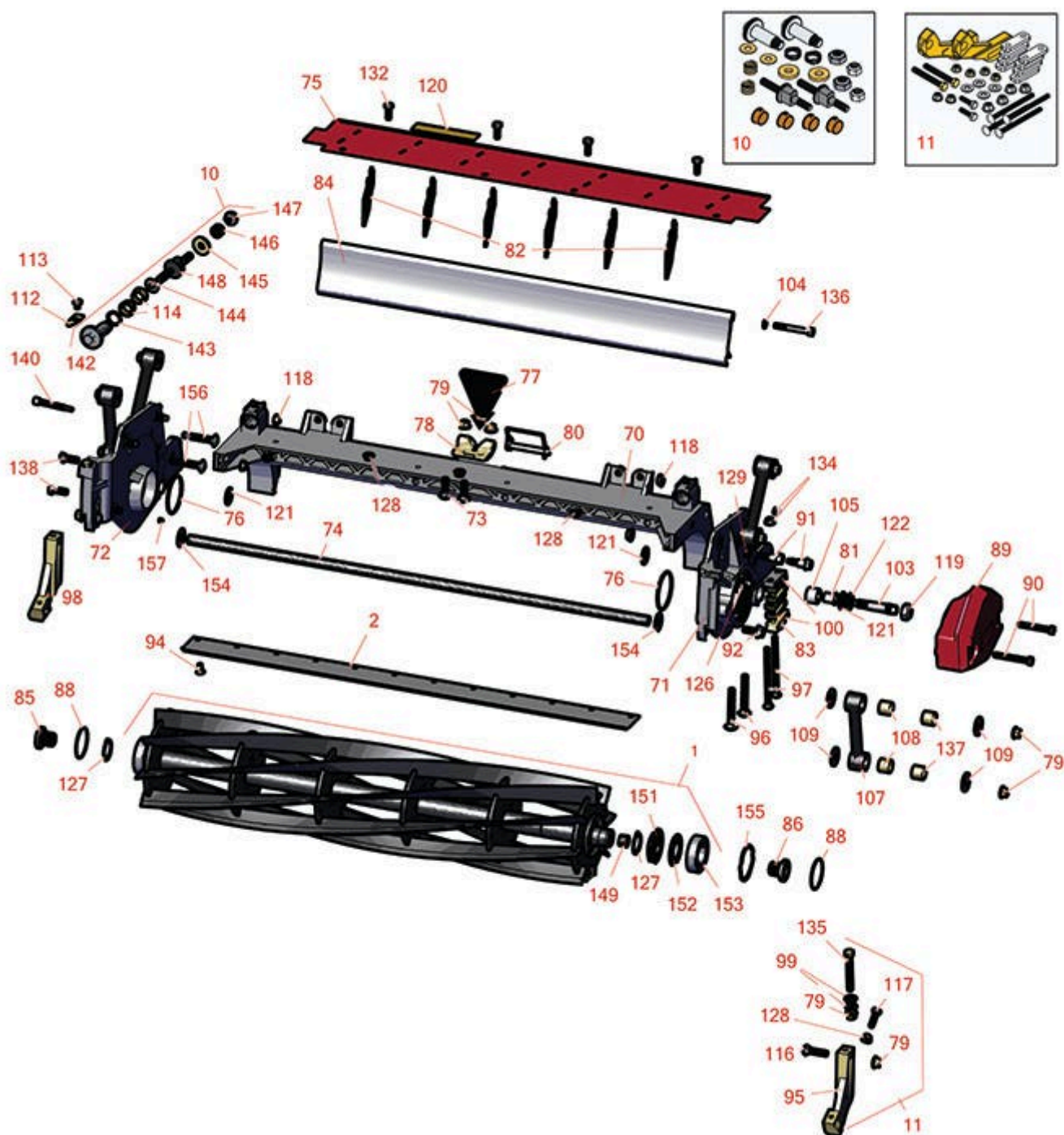


### Reel & Bedknife





## Replaces Toro Reelmaster 3105-D Parts

32in DPA Cutting Unit - Models 03191  
Reel & Bedknife



Item No	R&R Part No.	OEM Part No.	Description	Qty Req	Price Each	Order Quantity
---------	--------------	--------------	-------------	---------	------------	----------------

### R&R Reels, Lifetime Guaranteed

1	<b>R137-8483</b>	137-8483	Reel - 8 Blade Razor Series Radial (RR) w/Bearings and Seals 32x7	1	<b>601.35</b>	
---	------------------	----------	---	---	---------------	--

*Detail Description: R&R Reel blades are expertly crafted from premium high carbon-boron alloy steel, heat-treated to perfectly complement both R&R and OEM bedknives. Each reel undergoes precision cylindrical grinding on bearing surfaces, followed by relief grinding for optimal performance. Advanced computer balancing ensures extended reel and bearing life. Backed by our lifetime guarantee against defects in materials and craftsmanship under normal use, R&R Reels deliver unmatched durability and cutting precision you can trust.:*

1	<b>R137-8482</b>	137-8482	Reel - 5 Blade Razor Series Radial (RR) w/Bearings and Seals 32x7	1	<b>572.95</b>	
---	------------------	----------	---	---	---------------	--

*Detail Description: R&R Reel blades are expertly crafted from premium high carbon-boron alloy steel, heat-treated to perfectly complement both R&R and OEM bedknives. Each reel undergoes precision cylindrical grinding on bearing surfaces, followed by relief grinding for optimal performance. Advanced computer balancing ensures extended reel and bearing life. Backed by our lifetime guarantee against defects in materials and craftsmanship under normal use, R&R Reels deliver unmatched durability and cutting precision you can trust.:*

### R&R Bedknives, Lifetime Guaranteed

2	<b>R114-9389</b>	114-9389	Bedknife - 32 in Unit - Standard	1	<b>65.75</b>	
---	------------------	----------	-------------------------------------	---	--------------	--

*Detail Description: R&R Bedknives are manufactured from high carbon-boron alloy steel and then hardened to RC46-49 to match the temper of our reel blades and original equipment reels. Bedknives are surface ground on the top and front edge and straightened three times before being packaged with oil for rust prevention. All R&R Bedknives now have an increased front edge grind for added life. All R&R Bedknives are guaranteed against defects in material and workmanship under normal use for the life of the part.:*

2	<b>R114-9391</b>	114-9391	Bedknife - 32 in Unit - Heavy Duty	1	<b>65.95</b>	
---	------------------	----------	---------------------------------------	---	--------------	--

*Detail Description: R&R Bedknives are manufactured from high carbon-boron alloy steel and then hardened to RC46-49 to match the temper of our reel blades and original equipment reels. Bedknives are surface ground on the top and front edge and straightened three times before being packaged with oil for rust prevention. All R&R Bedknives now have an increased front edge grind for added life. All R&R Bedknives are guaranteed against defects in material and workmanship under normal use for the life of the part.:*

All original equipment manufacturers names and part numbers are used for identification purposes only, and we are in no way implying that our products are original equipment parts. Prices subject to change without notice.



## Replaces Toro Reelmaster 3105-D Parts

32in DPA Cutting Unit - Models 03191  
Reel & Bedknife



Item No	R&R Part No.	OEM Part No.	Description	Qty Req	Price Each	Order Quantity
---------	--------------	--------------	-------------	---------	------------	----------------

### R&R Razor Tool Steel Bedknives, Lifetime Guaranteed

2	<b>R112-8956</b>	112-8956	Bedknife - Razor Tool Steel - 32 x 3/8 Fairway	1	<b>127.65</b>	
---	------------------	----------	--	---	---------------	--

*Detail Description: R&R Razor bedknives are manufactured from premium alloy tool steel and then hardened to RC48-51 to match the temper of our Razor reel blades and original equipment premium series reels. Bedknives are surface ground on the top and front edge and specially packaged for rust prevention. All R&R Bedknives now have an increased front edge grind for added life. All R&R Bedknives are guaranteed against defects in material and workmanship under normal use for the life of the part. You can expect up to double the life over standard bedknives.:*

### Overhaul Kits

10	<b>R120-7230</b>	120-7230	Overhaul Kit - Fits DPA Units	1	<b>180.50</b>	
----	------------------	----------	-------------------------------	---	---------------	--

*Detail Description: Incl 2 ea.: R108-0015, R115-7039, R119-4155, R120-5116, R120-5118, R120-5120, R3296-33, R3296-48 & 4 ea: R106-5344:*

11	<b>R110-9600</b>	110-9600	High HOC Kit	1	<b>170.90</b>	
----	------------------	----------	--------------	---	---------------	--

*Detail Description: Includes 1 ea.: R120-0404, R120-0405 & 2 ea: R112-7451, R322-16, R445722 & 4 ea.: R106-9758, R104-8300, R453011, R104-8301 & 8 ea: R106-3925:*

### Other Parts Available

70	<b>R112-8978</b>	112-8978	Frame - Center 32 in Unit	1	<b>296.70</b>	
----	------------------	----------	---------------------------	---	---------------	--

71	<b>R137-5976</b>	137-5976	Side Plate Assy - 7 in LH Aluminum	1	<b>222.20</b>	
----	------------------	----------	------------------------------------	---	---------------	--

72	<b>R137-5979</b>	137-5979	Side Plate Assy - 7 in RH Aluminum	1	<b>222.20</b>	
----	------------------	----------	------------------------------------	---	---------------	--

73	<b>R3231-25</b>	01-173-0610, 30-9970, 3231-25, 3231-3, 900064P	Bolt - Carriage 3/8-16 x 1-1/4	2	<b>0.69</b>	
----	-----------------	--	--------------------------------	---	-------------	--

74	<b>R112-8979</b>	112-8979	Tube - Support - 32 in Units	1	<b>49.80</b>	
----	------------------	----------	------------------------------	---	--------------	--

75	<b>R112-8983</b>	112-8983	Front Grass Shield Assy - 32 in Units	1	<b>44.65</b>	
----	------------------	----------	---------------------------------------	---	--------------	--

All original equipment manufacturers names and part numbers are used for identification purposes only, and we are in no way implying that our products are original equipment parts. Prices subject to change without notice.



## Replaces Toro Reelmaster 3105-D Parts

32in DPA Cutting Unit - Models 03191  
Reel & Bedknife



Item No	R&R Part No.	OEM Part No.	Description	Qty Req	Price Each	Order Quantity
76	<b>R117-8177</b>	117-8177	O-Ring	2	<b>2.45</b>	
77	<b>R110-4088-03</b>	110-4088-03, 119-8010-03	Kickstand	1	<b>22.35</b>	
78	<b>R110-4058</b>	110-4058	Bracket - Chain	1	<b>20.40</b>	
79	<b>R104-8301</b>	104-8301, 104-9301, 109-6658, 133-7570	Locknut - 3/8-16 Nylon Flanged	10	<b>0.88</b>	
80	<b>R107-7400</b>	107-7400	Pin - Lynch	1	<b>7.30</b>	
81	<b>R56-9520</b>	56-9520	Bushing - Nyliner	2	<b>1.65</b>	
82	<b>R110-1706</b>	110-1706	Deflector	6	<b>3.60</b>	
83	<b>R106-3924</b>	106-3924	Bracket - Rear Roller	2	<b>17.50</b>	
84	<b>R125-1998</b>	125-1998	Grass Shield - Rear	1	<b>59.35</b>	
85	<b>R127-7109</b>	127-7109	Insert-Threaded - 7 in Reel (RH)	1	<b>25.40</b>	
86	<b>R127-7111</b>	127-7111	Insert-Threaded - 7 in Reel (LH)	1	<b>25.40</b>	
88	<b>R112-6967</b>	112-6967	O-Ring	2	<b>2.05</b>	
89	<b>R119-0614-01</b>	119-0614-01	Weight	1	<b>76.40</b>	
90	<b>R101526</b>	01-150-0970, 01-178-0620, 20-53-AGD, 321-11, 3224-8, 323-11, 323-12, 323-31, 323-4, 323-47	Bolt - Hex HD 3/8-16 x 2-1/2 GR5	2	<b>0.96</b>	
91	<b>R107-2979</b>	107-2979	Bolt - Shoulder	6	<b>3.45</b>	

All original equipment manufacturers names and part numbers are used for identification purposes only, and we are in no way implying that our products are original equipment parts. Prices subject to change without notice.



## Replaces Toro Reelmaster 3105-D Parts

32in DPA Cutting Unit - Models 03191

Reel & Bedknife



Item No	R&R Part No.	OEM Part No.	Description	Qty Req	Price Each	Order Quantity
92	<b>R3234-11</b>	3234-11	Bolt - Hex Washer HD	2	<b>1.15</b>	
94	<b>R119-4151</b>	119-4151	Screw - Bedknife 5/16-18 x 17/32	10	<b>0.29</b>	
94	<b>R150476</b>	3-3816, 3-6462, 57-4910	Screw - Bedknife 5/16-18 x 5/8	10	<b>0.30</b>	
95	<b>R120-0404</b>	120-0404	Bracket- High HOC - LH	1	<b>53.80</b>	
<i>Detail Description: Fits 2011 &amp; Newer:</i>						
96	<b>R3230-26</b>	3230-26	Screw - Carriage 5/16-18 x 3	4	<b>3.40</b>	
97	<b>R106-9758</b>		Bolt - Carriage 5/16x4	4	<b>1.55</b>	
97	<b>R3230-30</b>	3230-30	Bolt - Carriage 5/16x4 1/2	4	<b>6.65</b>	
98	<b>R120-0405</b>	120-0405	Bracket - High HOC - RH	1	<b>53.80</b>	
<i>Detail Description: Fits 2011 &amp; Newer:</i>						

All original equipment manufacturers names and part numbers are used for identification purposes only, and we are in no way implying that our products are original equipment parts. Prices subject to change without notice.



## Replaces Toro Reelmaster 3105-D Parts

32in DPA Cutting Unit - Models 03191

Reel & Bedknife



Item No	R&R Part No.	OEM Part No.	Description	Qty Req	Price Each	Order Quantity
99	R453011	01-166-0100, 01-166-0120, 01-166-0270, 01-166-0500, 01-166-0600, 01-166-0620, 132-4593, 2356-3, 237-12, 24-10-AD, 24-11-AD, 24-11-BD, 24-12-AD, 24-12-BD, 30-9310, 32-8190, 3256-24, 3256-3, 3256-36, 3256-4, 453011, 47-9950, 48-9220, 513458, 7-0052	Washer - Flat 3/8 SAE Y/Zinc	4	0.12	
100	R119-0626	119-0626	Shim - Roller - 1/4 in - Slotted	8	5.45	
103	R106-9623	106-9623	Bolt - Bedbar	2	14.90	
104	R3256-74	3256-74	Washer - Flat	1	0.68	
105	R106-9618	106-9618	Bushing - Rubber	2	8.30	
107	R16-9759	16-9759	Link Assy	4	46.75	
108	R93-6981	93-6981	Spacer	8	4.85	
109	R93-8806	93-8806	Washer-Hardened	16	1.55	
112	R99-2097	99-2097	Detent - Bed Bar Adjuster	2	9.20	
113	R114-9396	114-9396, 119-4067	Bolt - Hex HD 5/16-18 x 3/8	2	1.55	

All original equipment manufacturers names and part numbers are used for identification purposes only, and we are in no way implying that our products are original equipment parts. Prices subject to change without notice.



## Replaces Toro Reelmaster 3105-D Parts

32in DPA Cutting Unit - Models 03191

Reel & Bedknife



Item No	R&R Part No.	OEM Part No.	Description	Qty Req	Price Each	Order Quantity
114	<b>R106-5344</b>	106-5344	Bushing - Flanged and Keyed	4	<b>5.35</b>	
116	<b>R3231-4</b>	01-157-0440, 01-173-0612, 3231-4	Bolt - Carriage 3/8-16 x 1-1/2	2	<b>1.30</b>	
117	<b>R322-16</b>	322-16, Apr-00	Bolt - Hex HD 5/16-18 x 1-1/8	2	<b>1.75</b>	
118	<b>R32128-43</b>	30-8990, 32128-43, 3290-357	Nut - Flanged Whiz - 3/8-16	6	<b>0.65</b>	
118	<b>R3296-39</b>	32127-25, 32128-36, 3290-357, 3296-17, 3296-22, 3296-39, 915663P, 99-7443	Locknut - 3/8-16 Nylon	6	<b>1.50</b>	
119	<b>R3296-33</b>	3296-33	Locknut - 5/8-18 ESNA Jam	2	<b>1.40</b>	
120	<b>R93-6688</b>	93-6688	Decal - Warning	1	<b>2.45</b>	
<i>Tech Note: Up to Serial #405170001:</i>						
120	<b>R137-9706</b>	137-9706	Decal- Warning	1	<b>3.95</b>	
<i>Tech Note: Serial #405170001 &amp; Up:</i>						
121	<b>R61-1950</b>	61-1950	Washer - Nylon - Bed Bar	4	<b>0.67</b>	
122	<b>R453017</b>	01-166-0050, 01-166-0240, 01-166-0800, 24-13-AD, 24-14-AD, 32-8110, 3256-26, 3256-6, 453017, 69-8980, 87-7270	Washer - Flat 1/2	2	<b>0.29</b>	

All original equipment manufacturers names and part numbers are used for identification purposes only, and we are in no way implying that our products are original equipment parts. Prices subject to change without notice.



## Replaces Toro Reelmaster 3105-D Parts

32in DPA Cutting Unit - Models 03191

Reel & Bedknife



Item No	R&R Part No.	OEM Part No.	Description	Qty Req	Price Each	Order Quantity
126	<b>R302-5</b>	21-6010, 302-11, 302-37, 302-47, 302-5, 302-57, 302-58, 302-6, 31-0300, 32-9660, 60-0800, 62-3880, 92-4181	Fitting - Grease	2	<b>0.30</b>	
127	<b>R92-2601</b>	92-2601	Snap Ring	2	<b>2.60</b>	
128	<b>R445722</b>	30-8980, 32128-2, 32128-20, 32128-20	Nut - Serrated Washer	6	<b>0.69</b>	
129	<b>R170714</b>	302-34, 302-39, 62-3520	Fitting - Pressure Relief	2	<b>2.25</b>	
132	<b>R3234-7</b>	3234-7	Bolt - Hex Washer HD 5/16-18 x 5/8	4	<b>1.30</b>	
134	<b>R104-8300</b>	104-8300, 104-8300 , 119-4041	Locknut - 5/16-18 Flanged Y/Zinc	6	<b>0.49</b>	
135	<b>R112-7451</b>	100-9429, 112-7451	Bolt - Hex Tap 3/8-16 x 2-3/4	2	<b>2.05</b>	
136	<b>R322-14</b>	01-150-0830, 01-178-0524, 30-8900, 322-14	Bolt - Hex HD 5/16-18 x 3 GR5	1	<b>2.30</b>	
137	<b>R94-8945</b>	94-8945	Bushing - Bronze - Link Bar	8	<b>2.70</b>	

All original equipment manufacturers names and part numbers are used for identification purposes only, and we are in no way implying that our products are original equipment parts. Prices subject to change without notice.



## Replaces Toro Reelmaster 3105-D Parts

32in DPA Cutting Unit - Models 03191  
Reel & Bedknife



Item No	R&R Part No.	OEM Part No.	Description	Qty Req	Price Each	Order Quantity
138	<b>R323-6</b>	01-150-0010, 01-178-0608, 20-47-AD, 20-47-AGD, 3224-2, 323-6, 49-3510, 908034P, 908332	Bolt - Hex HD 3/8-16 x 1 GR5 YZ	2	<b>0.62</b>	
140	<b>R107-7773</b>	107-7773	Bolt - Soc HD Cap 5/16-18 x 2-1/2	1	<b>7.90</b>	
142	<b>R120-5118</b>	120-5118	Shaft - Adjuster	2	<b>31.05</b>	
<i>Detail Description: 2012 &amp; Newer:</i>						
143	<b>R120-5116</b>	120-5116	Washer - Wave	2	<b>6.90</b>	
144	<b>R108-0015</b>	108-0015	Washer - Flat	2	<b>1.20</b>	
145	<b>R119-4155</b>	119-4155	Washer - Hardened	2	<b>7.50</b>	
146	<b>R120-5120</b>	120-5120	Spring - Compression	2	<b>2.35</b>	
147	<b>R3296-48</b>	119-4039, 32146-7, 3296-34, 3296-48	Locknut - 7/16-14 ESNA	2	<b>0.58</b>	
148	<b>R115-7039</b>	115-7039	Screw - Adjuster - Bedbar	2	<b>29.85</b>	
149	<b>R151064</b>	127-7118	Plug - Rubber - Fits R&R Reel Shaft Only	2	<b>1.20</b>	
151	<b>R127-4284</b>	127-4284	Washer - Special	2	<b>4.05</b>	
152	<b>R115-3299</b>	115-3299	Seal- Flocked	2	<b>11.40</b>	
153	<b>R115-3296</b>	115-3296	Bearing	2	<b>10.35</b>	
154	<b>R130-8094</b>	130-8094	Washer	2	<b>4.70</b>	

All original equipment manufacturers names and part numbers are used for identification purposes only, and we are in no way implying that our products are original equipment parts. Prices subject to change without notice.



## Replaces Toro Reelmaster 3105-D Parts

32in DPA Cutting Unit - Models 03191

Reel & Bedknife



Item No	R&R Part No.	OEM Part No.	Description	Qty Req	Price Each	Order Quantity
155	<b>R105-5700</b>	105-5700, 115-5258	Wave Washer - Bearing	1	<b>2.55</b>	
156	<b>R3231-40</b>	3231-40	Bolt - Carriage 3/8-16 x 2 1/4	8	<b>1.25</b>	
157	<b>R3245-35</b>	3245-35	Screw - Set 1/4-28 x 1/4	1	<b>0.60</b>	

All original equipment manufacturers names and part numbers are used for identification purposes only, and we are in no way implying that our products are original equipment parts. Prices subject to change without notice.