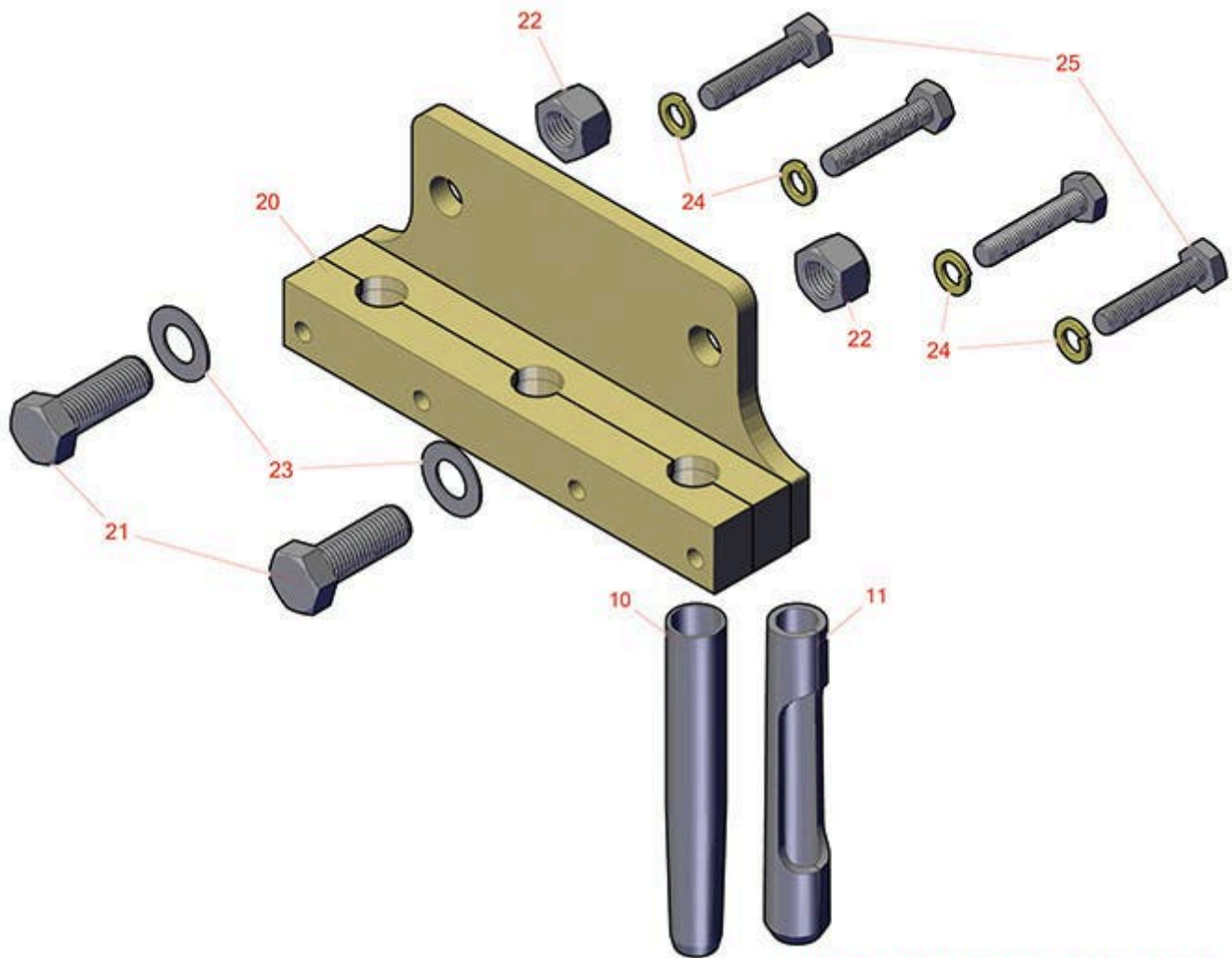




Replaces Toro ProCore 660 Parts

Aerating Unit

3-Tine Heavy-Duty Head - Model 09733



NOTE: TINES NOT SUPPLIED WITH KIT

All original equipment manufacturers names and part numbers are used for identification purposes only, and we are in no way implying that our products are original equipment parts. Prices subject to change without notice.



Replaces Toro ProCore 660 Parts

Aerating Unit

3-Tine Heavy-Duty Head - Model 09733



Item No	R&R Part No.	OEM Part No.	Description	Qty Req	Price Each	Order Quantity
---------	--------------	--------------	-------------	---------	------------	----------------

Tines

10	R86-9720	86-9720	Standard Hollow Tine - .875MT x 5.750L x .750OD	3	5.20	
----	-----------------	---------	--	---	-------------	--

Detail Description: Designed to remove a soil core, R&R Standard Hollow Tines are constructed from case hardened tubular steel and are the most economical tines available. Case hardening hardens the inner and outer surfaces of the tine wall to over RC55 for added wear.:

11	R834973	92-7900	Alloy Side-Eject Spoon - 3/4 Closed	3	6.50	
----	----------------	---------	--	---	-------------	--

Detail Description: Manufactured in our own facility from heavy-duty alloy steel and heat treated to RC45-48 for durability and wear, these spoons are formed with an open slot in the side for easy core ejection and to avoid plugging.:

11	R104-9877	104-9877	Alloy Side-Eject Spoon - .875MT x 5.75L x .875OD	3	5.95	
----	------------------	----------	---	---	-------------	--

Detail Description: Manufactured in our own facility from heavy duty alloy steel and heat treated to RC45-48 for durability and wear, these spoons are formed with an open slot in the side for easy core ejection and to avoid plugging.:

Other Parts Available

20	R100-7618	100-7618	Tine Holder Assy - 3 Tine 7/8 Mt	1	175.25	
----	------------------	----------	-------------------------------------	---	---------------	--

21	R33118-045	33118-045	Bolt - Hex HD M16-2.0 x 45	2	1.85	
----	-------------------	-----------	----------------------------	---	-------------	--

22	R33028-00	33028-00	Locknut - 16mm x 2.0 ESNA	2	2.30	
----	------------------	----------	---------------------------	---	-------------	--

23	R33098-00	33098-00	Flatwasher - 16mm	2	1.60	
----	------------------	----------	-------------------	---	-------------	--

24	R48-9590	01-176-0040, 42-9600, 48-9590, 48-9690, 63-7780	Washer - Lock 10mm	4	0.43	
----	-----------------	---	--------------------	---	-------------	--

25	R33115-050	33115-050	Bolt - Hex HD M10-1.5 x 50	4	1.50	
----	-------------------	-----------	----------------------------	---	-------------	--

All original equipment manufacturers names and part numbers are used for identification purposes only, and we are in no way implying that our products are original equipment parts. Prices subject to change without notice.