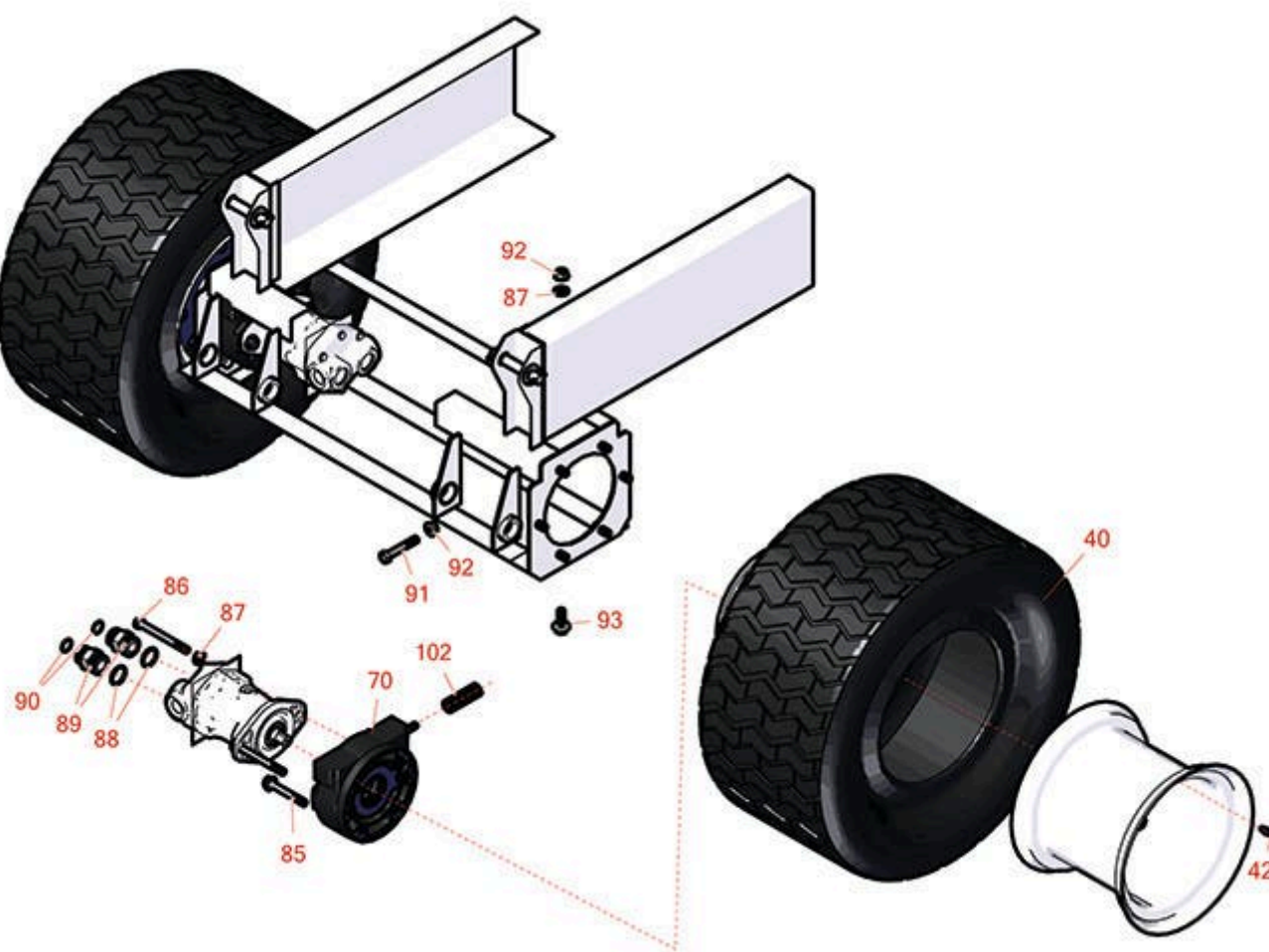




Replaces Toro Groundsmaster 5910-D Parts

*Rotary Mower - Model 31599
Planetary, Brake and Tire Assembly*



All original equipment manufacturers names and part numbers are used for identification purposes only, and we are in no way implying that our products are original equipment parts. Prices subject to change without notice.



Replaces Toro Groundsmaster 5910-D Parts

Rotary Mower - Model 31599
Planetary, Brake and Tire Assembly



Item No	R&R Part No.	OEM Part No.	Description	Qty Req	Price Each	Order Quantity
---------	--------------	--------------	-------------	---------	------------	----------------

Tires & Wheels

40	TIRES		Click Here to View Complete Tire Selection	0	0.00	
42	R232-24	232-24, 232-35	Stem - Valve w/ Cap	2	3.45	

Other Parts Available

70	R100-3070-03	100-3070-03	Brake Assy - LH	1	618.10	
<i>Tech Note: Left Hand Brake:</i>						
70	R100-3069-03	100-3069-03	Brake Assy - RH	1	618.10	
<i>Tech Note: Right Hand Brake:</i>						
85	R33106-090	33106-090	Bolt - M12-1.75 x 90 Fl Hex HD Gr 8.8	8	4.80	
86	R33116-120	33116-120	Bolt - M12-1.75 x 120mm Hx HD	4	8.95	
87	R3256-26	01-166-0540, 01-166-0820, 17-2530, 24-13-BD, 30-8570, 3256-26, 356206, 48-9390	Washer - 1/2 in	8	0.43	
88	R237-146	237-146, 340-146	O-Ring	4	1.55	
89	R104-3797	104-3797	Hydraulic Fitting - Striaght	4	20.90	
90	R340-65	340-65	O-Ring	4	0.90	
91	R325-12	01-150-0320, 01-150-0880, 01-178-0824, 20-93-AD, 325-12	Bolt - Hx HD	2	5.35	

All original equipment manufacturers names and part numbers are used for identification purposes only, and we are in no way implying that our products are original equipment parts. Prices subject to change without notice.



Replaces Toro Groundsmaster 5910-D Parts



*Rotary Mower - Model 31599
Planetary, Brake and Tire Assembly*

Item No	R&R Part No.	OEM Part No.	Description	Qty Req	Price Each	Order Quantity
92	R32128-23	32128-23, 3218-23, 99-5107	Nut - Lock Hex Flanged 1/2-13	10	1.55	
93	R100-6116	100-6116	Bolt - 1/2-13 x 1 1/2 Flanged Hx HD Gr 8	8	4.85	
102	R94-3088	94-3088	Spring - Compression	2	6.05	

All original equipment manufacturers names and part numbers are used for identification purposes only, and we are in no way implying that our products are original equipment parts. Prices subject to change without notice.