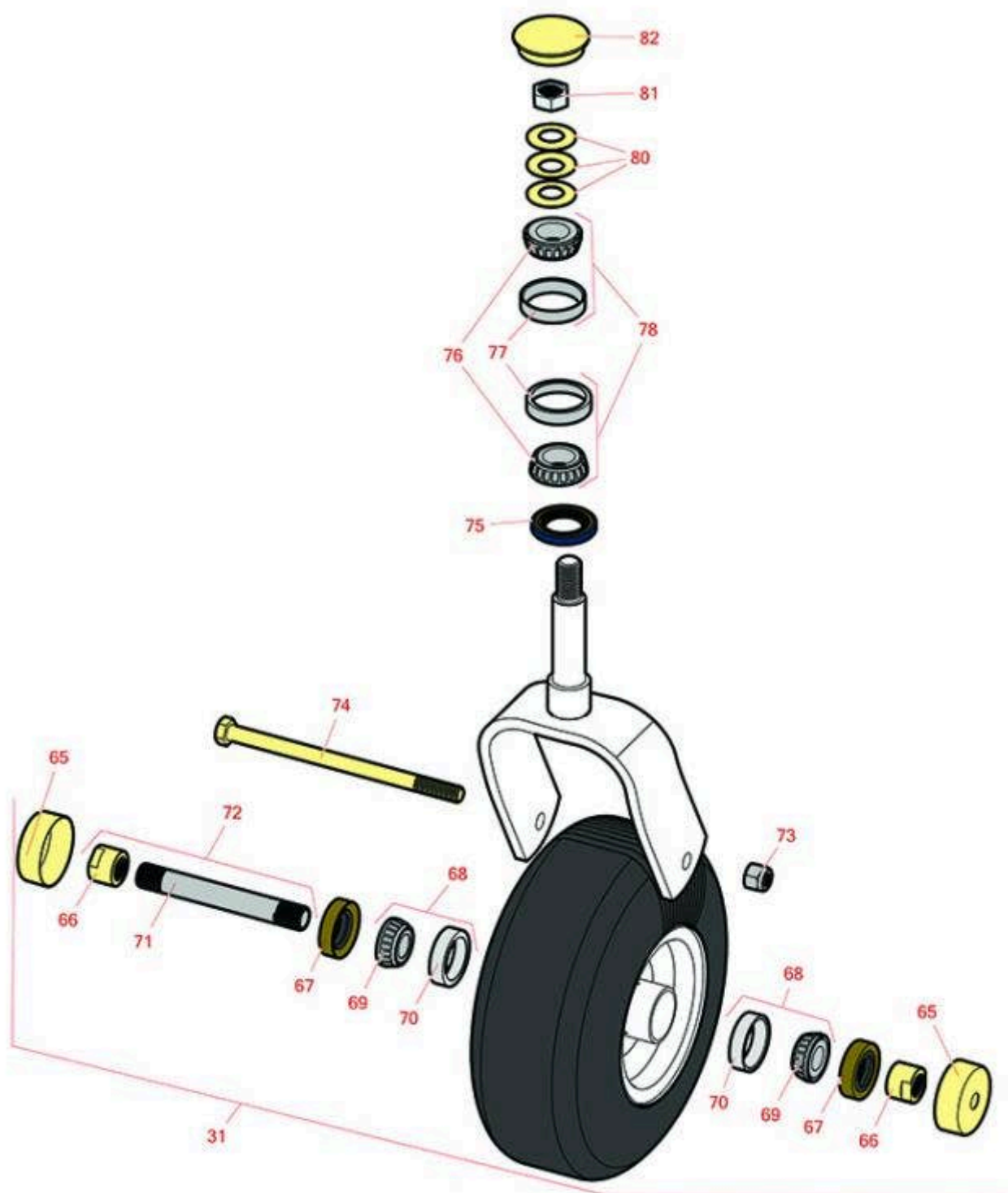




Replaces Exmark Vertex V-Series Parts

52in Zero-Turn Mower - Model VXV060B1852A00
Caster Wheel



All original equipment manufacturers names and part numbers are used for identification purposes only, and we are in no way implying that our products are original equipment parts. Prices subject to change without notice.



Replaces Exmark Vertex V-Series Parts

52in Zero-Turn Mower - Model VXV060B1852A00
Caster Wheel



Item No	R&R Part No.	OEM Part No.	Description	Qty Req	Price Each	Order Quantity
---------	--------------	--------------	-------------	---------	------------	----------------

Tires

31	R109-9126	109-9126	Tire & Wheel - 13x5.00-6 - White	2	135.75	
----	------------------	----------	----------------------------------	---	---------------	--

Tech Note: Incl: items 65-74:

Other Parts Available

65	R103-2768	103-2768	Guard - Seal	4	3.45	
----	------------------	----------	--------------	---	-------------	--

66	R103-3051	103-3051	Spacer - Nut - Hardened	4	7.45	
----	------------------	----------	-------------------------	---	-------------	--

67	R103-0063	103-0063	Seal - Grease	4	5.15	
----	------------------	----------	---------------	---	-------------	--

68	R500534	1-633585, R & R ONLY	Bearing - with Cup	4	12.40	
----	----------------	-------------------------	--------------------	---	--------------	--

Detail Description: Kit includes: 1 ea R254-78- Bearing Cone & R254-79 Bearing Cone:

69	R254-78	1-633585	Tapered Bearing Cone	4	6.40	
----	----------------	----------	----------------------	---	-------------	--

70	R254-79	1-633584, R & R ONLY	Cup - Bearing	4	3.40	
----	----------------	-------------------------	---------------	---	-------------	--

Detail Description: Use R254-79M installation mandrel to properly install race.:

71	R103-3155	103-3155	Axle - Caster	2	21.05	
----	------------------	----------	---------------	---	--------------	--

72	R126-5360	126-5360	Axle- Caster w/Spacer Nut	2	18.15	
----	------------------	----------	---------------------------	---	--------------	--

73	RF5003	3296-23	Locknut - ESNA 1/2-13	2	0.82	
----	---------------	---------	-----------------------	---	-------------	--

74	R325-42	325-42	Bolt - 1/2-13 x 8 Hex Head Gr 5	2	10.30	
----	----------------	--------	---------------------------------	---	--------------	--

75	R116-5647	116-5647, R & R ONLY	Seal - Grease	2	3.05	
----	------------------	-------------------------	---------------	---	-------------	--

76	R254-94	1-543509	Tapered Bearing Cone	4	7.55	
----	----------------	----------	----------------------	---	-------------	--

77	R254-72	1-543508	Cup - Bearing	4	4.05	
----	----------------	----------	---------------	---	-------------	--

78	R500596	R & R ONLY	Tapered Bearing Set - Cup and Cone	4	14.65	
----	----------------	------------	------------------------------------	---	--------------	--

All original equipment manufacturers names and part numbers are used for identification purposes only, and we are in no way implying that our products are original equipment parts. Prices subject to change without notice.



Replaces Exmark Vertex V-Series Parts

52in Zero-Turn Mower - Model V XV060B1852A00
Caster Wheel



Item No	R&R Part No.	OEM Part No.	Description	Qty Req	Price Each	Order Quantity
80	R1-633508	1-633508	Washer - Spring Disc	6	3.10	
81	R3296-51	3296-51	Nut - Nylon Lock 3/4-10 Gr 8	2	5.70	
82	R103-4882	103-4882	Grease Cap - Castor	2	4.45	

All original equipment manufacturers names and part numbers are used for identification purposes only, and we are in no way implying that our products are original equipment parts. Prices subject to change without notice.