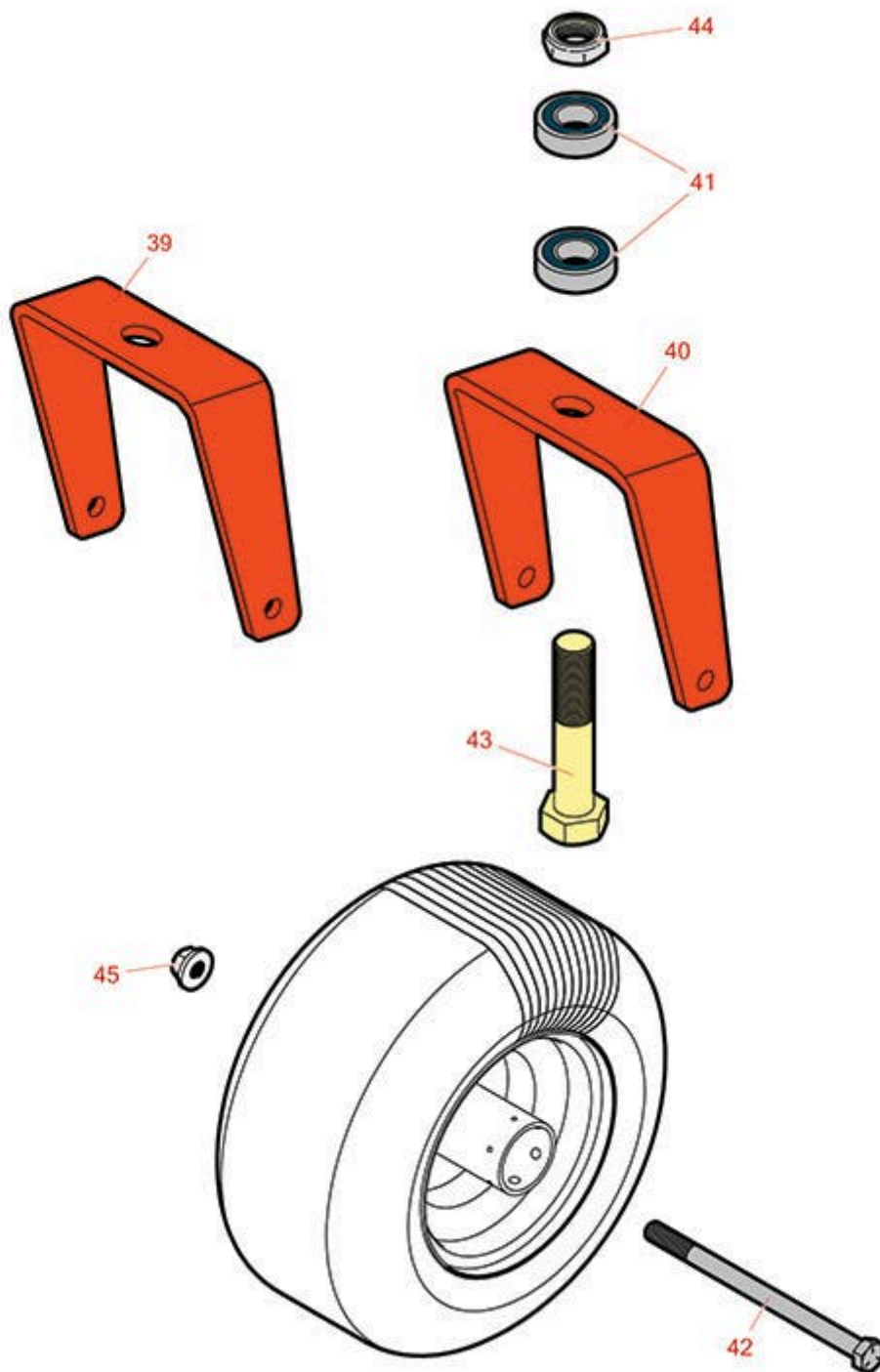




# Replaces Bad Boy Mowers MZ Parts

Zero-Turn Mower  
Caster Wheel



All original equipment manufacturers names and part numbers are used for identification purposes only, and we are in no way implying that our products are original equipment parts. Prices subject to change without notice.



# Replaces Bad Boy Mowers MZ Parts

Zero-Turn Mower

Caster Wheel



| Item No | R&R Part No. | OEM Part No. | Description | Qty Req | Price Each | Order Quantity |
|---------|--------------|--------------|-------------|---------|------------|----------------|
|---------|--------------|--------------|-------------|---------|------------|----------------|

## Other Parts Available

|    |                        |             |  |   |              |  |
|----|------------------------|-------------|--|---|--------------|--|
| 39 | <b>RZBB023-0005-00</b> | 023-0005-00 | Front Fork Mz (42" Only)                   | 2 | <b>29.24</b> |  |
| 40 | <b>RZBB023-0002-00</b> | 023-0002-00 | Front Fork - 2017 Mz                       | 2 | <b>24.11</b> |  |
| 41 | <b>RZBB010-1050-00</b> | 010-1050-00 | Bearing w/2 Contact Rubber Seals           | 4 | <b>12.98</b> |  |
| 42 | <b>RZBB018-0035-00</b> | 018-0035-00 | 1/2-13 x 7-1/2 Hex Cap Screw (GR.5) Zinc   | 2 | <b>5.20</b>  |  |
| 43 | <b>RZBB018-0005-00</b> | 018-0005-00 | 1"-14 x 5 Hex Cap Screw (GR.8) Zinc Yellow | 2 | <b>10.39</b> |  |
| 44 | <b>RZBB013-9004-00</b> | 013-9004-00 | 1"-14 Nylon Insert Jam Locknut Zinc        | 2 | <b>3.25</b>  |  |
| 45 | <b>R170716</b>         | 013-8050-00 | Locknut - 1/2-13 Flanged                   | 2 | <b>3.55</b>  |  |

All original equipment manufacturers names and part numbers are used for identification purposes only, and we are in no way implying that our products are original equipment parts. Prices subject to change without notice.