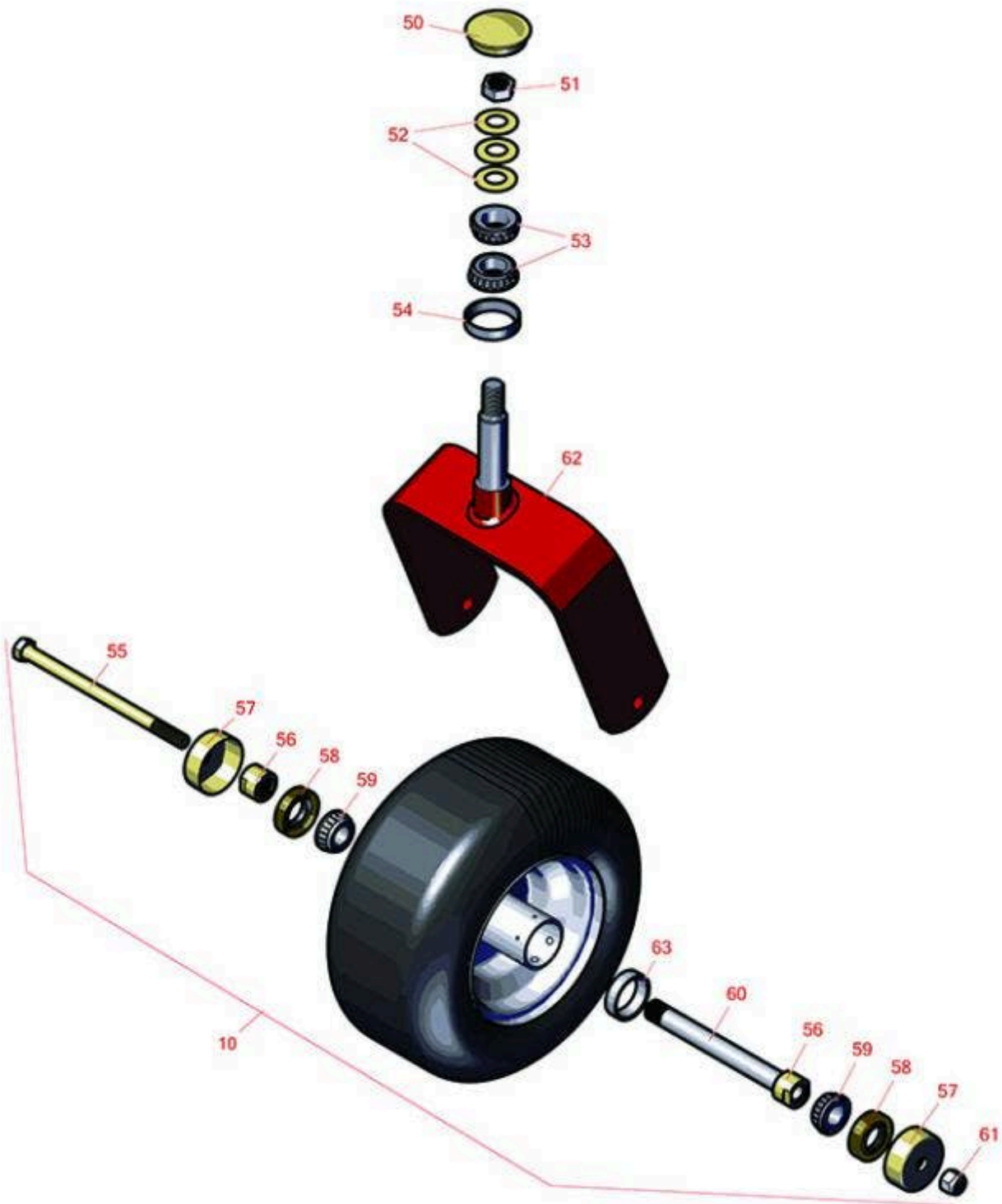




Replaces Toro Z Master G3 Riding Mower Parts

52in Deck
Caster Wheel



All original equipment manufacturers names and part numbers are used for identification purposes only, and we are in no way implying that our products are original equipment parts. Prices subject to change without notice.



Replaces Toro Z Master G3 Riding Mower Parts

52in Deck
Caster Wheel



Item No	R&R Part No.	OEM Part No.	Description	Qty Req	Price Each	Order Quantity
---------	--------------	--------------	-------------	---------	------------	----------------

Tires & Wheels

10	R109-9127	109-9124, 109-9125, 109-9127	Tire & Wheel - 13x6.50-6 Flat Free	1	127.60	
----	------------------	------------------------------------	------------------------------------	---	---------------	--

Other Parts Available

50	R103-4882	103-4882	Grease Cap - Castor	1	4.45	
51	R3296-51	3296-51, 3296-81	Nut - Nylon Lock 3/4-10 Gr 8	1	5.70	
52	R1-633508	1-633508	Washer - Spring Disc	3	3.10	
53	R254-94	1-543509, 254-94, 32-8090, 32-8240, 32-9640, 40440, 62-3330	Tapered Bearing Cone	2	7.55	
54	R1-543511	1-543511	Seal- Grease	1	7.90	
55	R325-39	325-39	Bolt - Hx HD 1/2-13 x 9 1/2	1	5.65	
56	R103-3051	103-3051	Spacer - Nut - Hardened	2	7.45	
57	R103-2768	103-2768	Guard - Seal	2	3.45	
58	R103-0063	103-0063	Seal - Grease	2	5.15	
59	R500534	1-633585	Bearing - with Cup	2	12.40	
<i>Detail Description: Kit includes: 1 ea R254-78- Bearing Cone & R254-79 Bearing Cone:</i>						
60	R103-5156	103-5156	Axle- Caster	1	9.65	
61	RF5003	32127-29, 32131-5, 32132-5, 3296-23	Locknut - ESNA 1/2-13	1	0.82	

All original equipment manufacturers names and part numbers are used for identification purposes only, and we are in no way implying that our products are original equipment parts. Prices subject to change without notice.



Replaces Toro Z Master G3 Riding Mower Parts

52in Deck
Caster Wheel



Item No	R&R Part No.	OEM Part No.	Description	Qty Req	Price Each	Order Quantity
62	R116-8888	103-1474-01, 116-6707-01, 116-8888	Fork - Caster 7.875 in Inside	1	110.10	
63	R254-79	01-103-0060, 01-103-0130, 1-633584, 252-106, 254-79, 32-7800, 32-9590	Cup - Bearing	1	3.40	

Detail Description: Use R254-79M installation mandrel to properly install race.:

All original equipment manufacturers names and part numbers are used for identification purposes only, and we are in no way implying that our products are original equipment parts. Prices subject to change without notice.