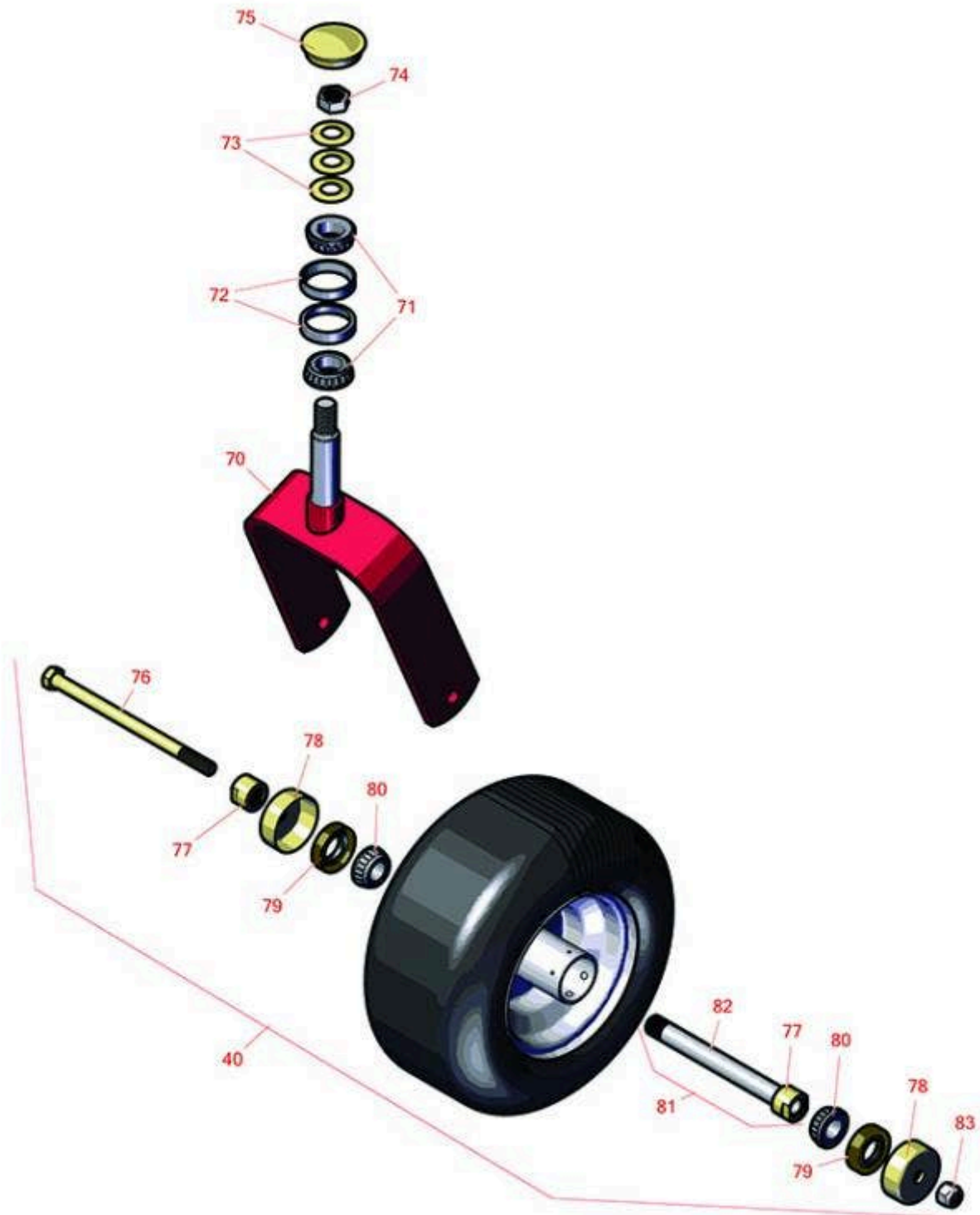




Replaces Toro Z Master Professional 5000 Parts

Zero Turn Mower with 48in deck - Model 74904
Caster Wheel



All original equipment manufacturers names and part numbers are used for identification purposes only, and we are in no way implying that our products are original equipment parts. Prices subject to change without notice.



Replaces Toro Z Master Professional 5000 Parts

Zero Turn Mower with 48in deck - Model 74904
Caster Wheel



Item No	R&R Part No.	OEM Part No.	Description	Qty Req	Price Each	Order Quantity
Wheels						
40	R109-9127	109-9124, 109-9125, 109-9127	Tire & Wheel - 13x6.50-6 Flat Free	2	127.60	
40	R127-9531	127-9531	Tire & Wheel - 13x5.00-6 - Grey	2	148.60	
Other Parts Available						
70	R116-6702-01	116-6702-01	Fork-Caster	2	64.25	
71	R254-94	1-543509, 254-94, 32-8090, 32-8240, 32-9640, 40440, 62-3330	Tapered Bearing Cone	4	7.55	
72	R254-72	01-103-0050, 01-103-0120, 01-103-0140, 1-543508, 254-71, 254-72, 40439, 62-3340, 99-4511	Cup - Bearing	4	4.05	
73	R1-633508	1-633508	Washer - Spring Disc	6	3.10	
74	R3296-51	3296-51, 3296-81	Nut - Nylon Lock 3/4-10 Gr 8	2	5.70	
75	R103-4882	103-4882	Grease Cap - Castor	2	4.45	
76	R325-42	325-42	Bolt - 1/2-13 x 8 Hex Head Gr 5	2	10.30	
77	R103-3051	103-3051	Spacer - Nut - Hardened	4	7.45	
78	R103-2768	103-2768	Guard - Seal	4	3.45	
79	R103-0063	103-0063	Seal - Grease	4	5.15	

All original equipment manufacturers names and part numbers are used for identification purposes only, and we are in no way implying that our products are original equipment parts. Prices subject to change without notice.



Replaces Toro Z Master Professional 5000 Parts

*Zero Turn Mower with 48in deck - Model 74904
Caster Wheel*



Item No	R&R Part No.	OEM Part No.	Description	Qty Req	Price Each	Order Quantity
80	R254-78	01-102-0060, 01-102-0130, 1-633585, 254-78, 32-7790, 32-9580, 93-4813	Tapered Bearing Cone	4	6.40	
81	R126-5360	126-5360	Axle- Caster w/Spacer Nut	1	18.15	
82	R103-3155	103-3155	Axle - Caster	2	21.05	
83	RF5003	32127-29, 32131-5, 32132-5, 3296-23	Locknut - ESNA 1/2-13	2	0.82	

All original equipment manufacturers names and part numbers are used for identification purposes only, and we are in no way implying that our products are original equipment parts. Prices subject to change without notice.