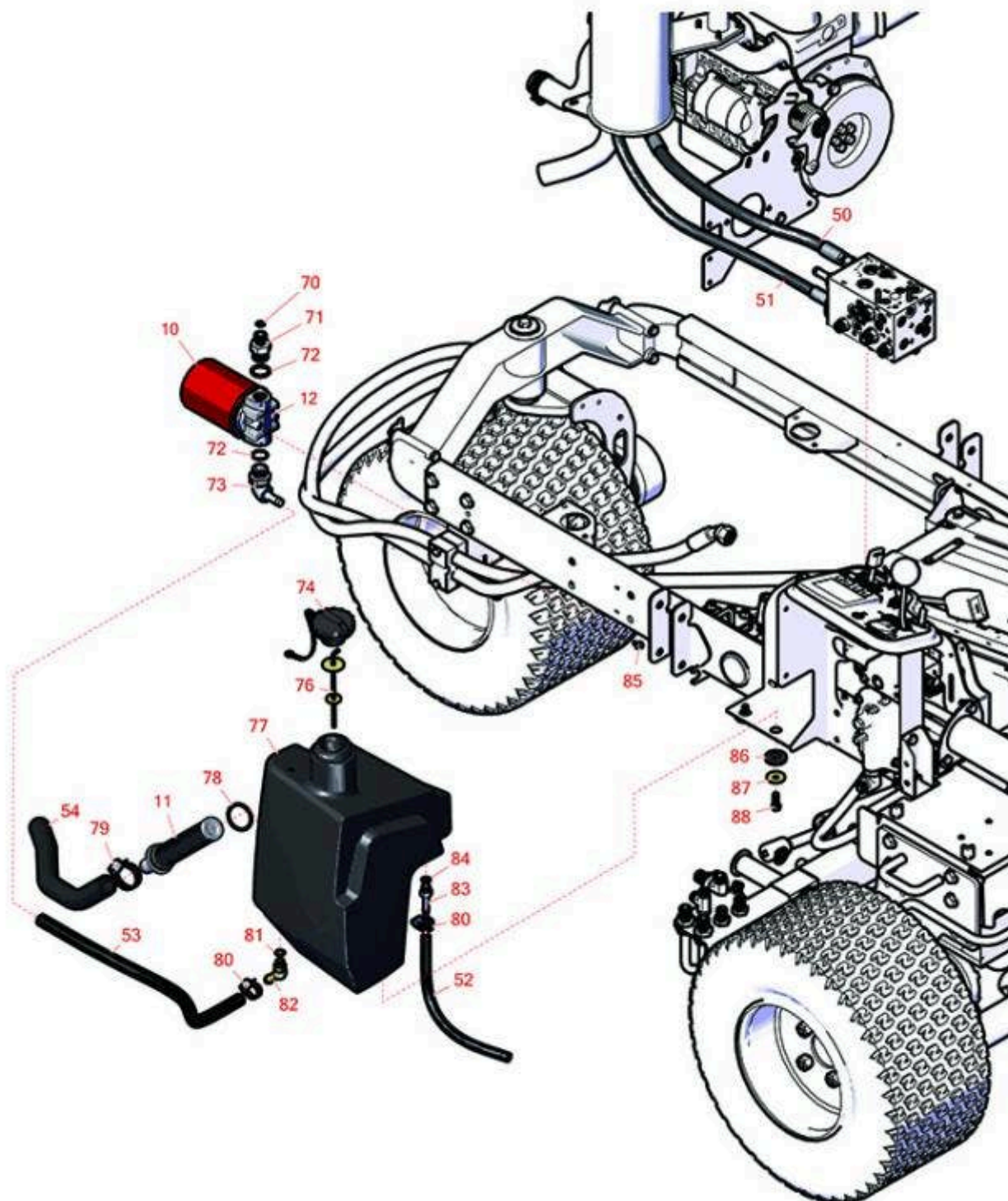




## Replaces Toro Reelmaster 3105-D Parts

Traction Unit - Model 03174

Hydraulic Tank



All original equipment manufacturers names and part numbers are used for identification purposes only, and we are in no way implying that our products are original equipment parts. Prices subject to change without notice.



# Replaces Toro Reelmaster 3105-D Parts

Traction Unit - Model 03174

Hydraulic Tank



| Item No | R&R Part No. | OEM Part No. | Description | Qty Req | Price Each | Order Quantity |
|---------|--------------|--------------|-------------|---------|------------|----------------|
|---------|--------------|--------------|-------------|---------|------------|----------------|

## Filters

|    |                  |   |                                  |   |               |  |
|----|------------------|---|----------------------------------|---|---------------|--|
| 10 | <b>RRF10610</b>  | 28-1370,<br>353-387,<br>353387,<br>54-0110,<br>76-6490,<br>86-3010  | SilverGuard Oil Filter           | 1 | <b>8.25</b>   |  |
| 10 | <b>R86-3010</b>  | 23-9740,<br>239470,<br>28-1370,<br>281370,<br>353-387,<br>353387,<br>54-0110,<br>540110,<br>76-6490,<br>86-3010,<br>863010,<br>Dec-70 | Baldwin Hydraulic Oil Filter     | 1 | <b>10.65</b>  |  |
| 10 | <b>RRF10611</b>  | 01-317-0240,<br>23-9740,<br>54-0110   | SilverGuard Hydraulic Oil Filter | 1 | <b>8.75</b>   |  |
| 11 | <b>R104-7546</b> | 104-7546,<br>104-7546`  | Strainer - Tank                  | 1 | <b>106.50</b> |  |
| 12 | <b>R150924</b>   |   | Filter Head Assy                 | 1 | <b>31.95</b>  |  |
| 12 | <b>R92-5821</b>  | 86-3000,<br>92-5821   | Filter - Head                    | 1 | <b>69.95</b>  |  |

## Hoses

|    |                  |          |                     |   |              |  |
|----|------------------|----------|---------------------|---|--------------|--|
| 50 | <b>R95-8829</b>  | 95-8829  | Hydraulic Hose Assy | 1 | <b>48.60</b> |  |
| 51 | <b>R106-4197</b> | 106-4197 | Hydraulic Hose Assy | 1 | <b>57.90</b> |  |
| 52 | <b>R80-7342</b>  | 80-7342  | Hydraulic Hose Assy | 1 | <b>11.30</b> |  |
| 53 | <b>R99-3501</b>  | 99-3501  | Hose                | 1 | <b>22.40</b> |  |
| 54 | <b>R104-4845</b> | 104-4845 | Hose - Suction      | 1 | <b>92.90</b> |  |

All original equipment manufacturers names and part numbers are used for identification purposes only, and we are in no way implying that our products are original equipment parts. Prices subject to change without notice.



## Replaces Toro Reelmaster 3105-D Parts

Traction Unit - Model 03174

Hydraulic Tank



| Item No | R&R Part No. | OEM Part No. | Description | Qty Req | Price Each | Order Quantity |
|---------|--------------|--------------|-------------|---------|------------|----------------|
|---------|--------------|--------------|-------------|---------|------------|----------------|

### Other Parts Available

|  |                  |   |                                 |   |               |  |
|--|------------------|---|---------------------------------|---|---------------|--|
| 70   | <b>R237-30</b>   | 23-6320,<br>237-30                                      | O-Ring - Seal                   | 1 | <b>0.82</b>   |  |
| 71   | <b>R100-4240</b> | 100-4240  | No 8 Orfs Male x No 12 Orb Male | 1 | <b>34.20</b>  |  |
| 72   | <b>R237-81</b>   | 237-81,<br>237.81,<br>327-81                            | O-Ring                          | 2 | <b>2.45</b>   |  |
| 73   | <b>R95-8814</b>  | 95-8814   | Fitting - Barbed 90 Deg         | 1 | <b>112.15</b> |  |
| 74   | <b>R93-7160</b>  | 93-3103,<br>93-7160                                     | Cap - Hyd Oil w/Tether          | 1 | <b>24.65</b>  |  |
| 76   | <b>R75-3710</b>  | 75-3710   | Dipstick - Hyd Oil              | 1 | <b>35.10</b>  |  |
| 76   | <b>R119-6968</b> | 119-6968  | Dipstick- Oil                   | 1 | <b>26.05</b>  |  |
| 77   | <b>R104-4840</b> | 104-4840  | Tank - Hyd                      | 1 | <b>921.40</b> |  |
| 78   | <b>R340-136</b>  | 340-136   | O-Ring                          | 1 | <b>4.60</b>   |  |
| 79   | <b>R2412-34</b>  | 2412-34,<br>31-0120                                     | Clamp - Hose .75-1.5            | 1 | <b>1.60</b>   |  |
| <i>Detail Description: Stainless steel hose clamp with 5/16" slotted hex head, heat treated carbon steel, plated with zinc plus trivalent chromate for long lasting protection.:</i> |                  |   |                                 |   |               |  |
| 80   | <b>R2412-36</b>  | 2210-87,<br>2412-36,<br>31-9140,<br>93-5818,<br>99-0772 | Clamp - Hose 1/2                | 3 | <b>2.75</b>   |  |
| 81   | <b>R237-79</b>   | 237-79  | O-Ring                          | 1 | <b>1.60</b>   |  |
| 82   | <b>R354-126</b>  | 354-126   | Hydraulic Fitting - 45 Deg      | 1 | <b>28.15</b>  |  |
| 83   | <b>R353-979</b>  | 353-979   | Fitting - Straight              | 1 | <b>12.15</b>  |  |

All original equipment manufacturers names and part numbers are used for identification purposes only, and we are in no way implying that our products are original equipment parts. Prices subject to change without notice.



## Replaces Toro Reelmaster 3105-D Parts

*Traction Unit - Model 03174*

*Hydraulic Tank*



| Item No | R&R Part No.    | OEM Part No.                    | Description                | Qty Req | Price Each  | Order Quantity |
|---------|-----------------|---------------------------------|----------------------------|---------|-------------|----------------|
| 84      | <b>R237-42</b>  | 237-42,<br>31-4160              | O-Ring                     | 1       | <b>0.84</b> |                |
| 85      | <b>R3234-13</b> | 3234-13,<br>960151P             | Bolt - Flanged Hex 1/4-20  | 2       | <b>0.81</b> |                |
| 86      | <b>R240-11</b>  | 240-11                          | Bushing - Rubber - Flanged | 4       | <b>2.60</b> |                |
| 87      | <b>R63-8410</b> | 53-6380,<br>63-4810,<br>63-8410 | Washer - Isolator Bushing  | 4       | <b>0.81</b> |                |
| 88      | <b>R3234-11</b> | 3234-11                         | Bolt - Hex Washer HD       | 4       | <b>1.15</b> |                |

All original equipment manufacturers names and part numbers are used for identification purposes only, and we are in no way implying that our products are original equipment parts. Prices subject to change without notice.