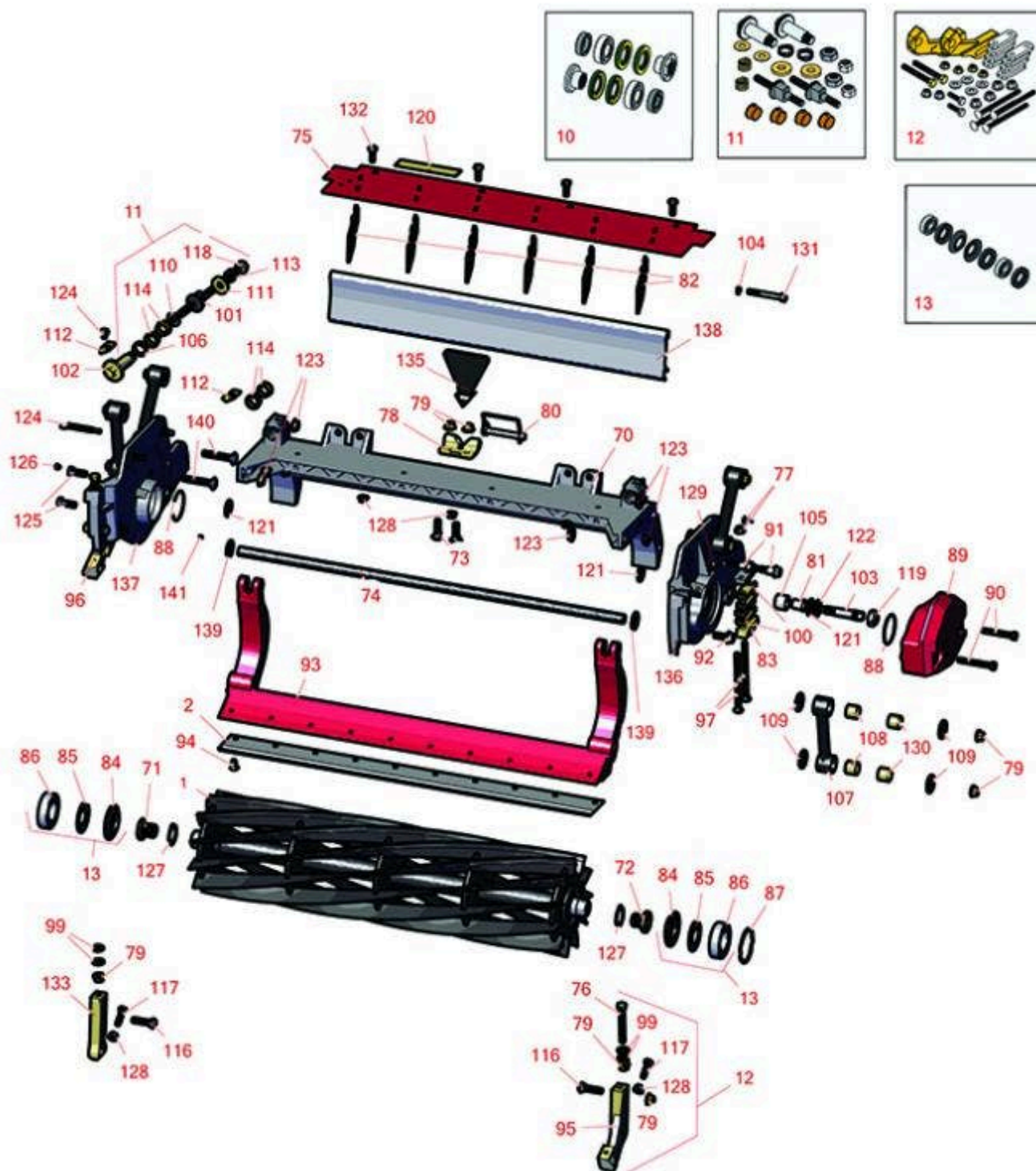




Replaces Toro Reelmaster 3105-D Parts

27in DPA Cutting Unit - Models 03188, 03189 & 03190
Reel & Bedknife



All original equipment manufacturers names and part numbers are used for identification purposes only, and we are in no way implying that our products are original equipment parts. Prices subject to change without notice.



Replaces Toro Reelmaster 3105-D Parts

27in DPA Cutting Unit - Models 03188, 03189 & 03190
Reel & Bedknife



Item No	R&R Part No.	OEM Part No.	Description	Qty Req	Price Each	Order Quantity
---------	--------------	--------------	-------------	---------	------------	----------------

R&R Reels, Lifetime Guaranteed

1	R133-0182	133-0182	Reel - 5 Blade Razor Series Radial 27x7	1	403.80	
---	------------------	----------	--	---	---------------	--

Detail Description: R&R Razor Reels are manufactured from a special high alloy steel and then hardened to RC48-51 to match the temper of our Razor bedknives and original equipment premium series bedknives. All R&R Reels are cylindrically ground on bearing surfaces, relief ground and precision computer balanced for extended bearing and reel life. R&R Products Reels are guaranteed against defects in material and workmanship for the life of the reel under normal use. You can expect up to double the life from Razor reels over standard reels.:

1	R137-8469	137-8469	Reel - 5 Blade Razor Series Radial Low Drag (RR) w/Bearings and Seals 27x7	1	448.65	
---	------------------	----------	--	---	---------------	--

Detail Description: R&R Razor Reels are manufactured from a special high alloy steel and then hardened to RC48-51 to match the temper of our Razor bedknives and original equipment premium series bedknives. All R&R Reels are cylindrically ground on bearing surfaces, relief ground and precision computer balanced for extended bearing and reel life. R&R Products Reels are guaranteed against defects in material and workmanship for the life of the reel under normal use. You can expect up to double the life from Razor reels over standard reels.:

1	R133-0184	133-0184	Reel - 8 Blade Razor Series Radial 27x7	1	432.35	
---	------------------	----------	--	---	---------------	--

Detail Description: R&R Razor Reels are manufactured from a special high alloy steel and then hardened to RC48-51 to match the temper of our Razor bedknives and original equipment premium series bedknives. All R&R Reels are cylindrically ground on bearing surfaces, relief ground and precision computer balanced for extended bearing and reel life. R&R Products Reels are guaranteed against defects in material and workmanship for the life of the reel under normal use. You can expect up to double the life from Razor reels over standard reels.:

1	R137-8470	137-8470	Reel - 8 Blade Razor Series Radial (RR) w/Bearings and Seals 27x7	1	481.40	
---	------------------	----------	---	---	---------------	--

Detail Description: R&R Reel blades are expertly crafted from premium high carbon-boron alloy steel, heat-treated to perfectly complement both R&R and OEM bedknives. Each reel undergoes precision cylindrical grinding on bearing surfaces, followed by relief grinding for optimal performance. Advanced computer balancing ensures extended reel and bearing life. Backed by our lifetime guarantee against defects in materials and craftsmanship under normal use, R&R Reels deliver unmatched durability and cutting precision you can trust.:

1	R133-8278	133-8278	Reel - 11 Blade Razor Series Radial 27x7	1	458.95	
---	------------------	----------	---	---	---------------	--

All original equipment manufacturers names and part numbers are used for identification purposes only, and we are in no way implying that our products are original equipment parts. Prices subject to change without notice.



Replaces Toro Reelmaster 3105-D Parts

27in DPA Cutting Unit - Models 03188, 03189 & 03190
Reel & Bedknife



Item No	R&R Part No.	OEM Part No.	Description	Qty Req	Price Each	Order Quantity
---------	--------------	--------------	-------------	---------	------------	----------------

Detail Description: R&R Razor Reels are manufactured from a special high alloy steel and then hardened to RC48-51 to match the temper of our Razor bedknives and original equipment premium series bedknives. All R&R Reels are cylindrically ground on bearing surfaces, relief ground and precision computer balanced for extended bearing and reel life. R&R Products Reels are guaranteed against defects in material and workmanship for the life of the reel under normal use. You can expect up to double the life from Razor reels over standard reels.:

1	R137-8471	137-8471	Reel - 11 Blade Razor Series Radial (RR) w/Bearings and Seals 27x7	1	499.10	
---	------------------	----------	--	---	---------------	--

Detail Description: R&R Reel blades are expertly crafted from premium high carbon-boron alloy steel, heat-treated to perfectly complement both R&R and OEM bedknives. Each reel undergoes precision cylindrical grinding on bearing surfaces, followed by relief grinding for optimal performance. Advanced computer balancing ensures extended reel and bearing life. Backed by our lifetime guarantee against defects in materials and craftsmanship under normal use, R&R Reels deliver unmatched durability and cutting precision you can trust.:

R&R Bedknives, Lifetime Guaranteed

2	R114-9388	114-9388	Bedknife - 27 in Unit - Standard	1	53.05	
---	------------------	----------	-------------------------------------	---	--------------	--

Detail Description: R&R Bedknives are manufactured from high carbon-boron alloy steel and then hardened to RC46-49 to match the temper of our reel blades and original equipment reels. Bedknives are surface ground on the top and front edge and straightened three times before being packaged with oil for rust prevention. All R&R Bedknives now have an increased front edge grind for added life. All R&R Bedknives are guaranteed against defects in material and workmanship under normal use for the life of the part.:

2	R114-9390	114-9390	Bedknife - 27 in Unit - Heavy Duty	1	53.10	
---	------------------	----------	---------------------------------------	---	--------------	--

Detail Description: R&R Bedknives are manufactured from high carbon-boron alloy steel and then hardened to RC46-49 to match the temper of our reel blades and original equipment reels. Bedknives are surface ground on the top and front edge and straightened three times before being packaged with oil for rust prevention. All R&R Bedknives now have an increased front edge grind for added life. All R&R Bedknives are guaranteed against defects in material and workmanship under normal use for the life of the part.:

R&R Razor Tool Steel Bedknives, Lifetime Guaranteed

2	R112-8910	112-8910	Bedknife - Razor Tool Steel - 27 High Cut	1	113.95	
---	------------------	----------	--	---	---------------	--

All original equipment manufacturers names and part numbers are used for identification purposes only, and we are in no way implying that our products are original equipment parts. Prices subject to change without notice.



Replaces Toro Reelmaster 3105-D Parts

27in DPA Cutting Unit - Models 03188, 03189 & 03190
Reel & Bedknife



Item No	R&R Part No.	OEM Part No.	Description	Qty Req	Price Each	Order Quantity
---------	--------------	--------------	-------------	---------	------------	----------------

Detail Description: R&R Razor bedknives are manufactured from premium alloy tool steel steel and then hardened to RC48-51 to match the temper of our Razor reel blades and original equipment premium series reels. Bedknives are surface ground on the top and front edge and specially packaged for rust prevention. All R&R Bedknives now have an increased front edge grind for added life. All R&R Bedknives are guaranteed against defects in material and workmanship under normal use for the life of the part. You can expect up to double the life over standard bedknives.:

Overhaul Kits

10	R114-5430	114-5430	Overhaul Kit - Roller	1	86.55	
<i>Detail Description: Includes 4 ea.: R112-7494 Seals; 2 ea.: R302-5 Grease Zerks, R114-3717 Seals, R112-5290 Bearings & R114-3745 Locknuts:</i>						
11	R120-7230	120-7230	Overhaul Kit - Fits DPA Units	1	180.50	
<i>Detail Description: Incl 2 ea.: R108-0015, R115-7039, R119-4155, R120-5116, R120-5118, R120-5120, R3296-33, R3296-48 & 4 ea: R106-5344:</i>						
12	R110-9600	110-9600	High HOC Kit	1	170.90	
<i>Detail Description: Includes 1 ea.: R120-0404, R120-0405 & 2 ea: R112-7451, R322-16, R445722 & 4 ea.: R106-9758, R104-8300, R453011, R104-8301 & 8 ea: R106-3925:</i>						
13	R131-3233	131-3233	Groomer/Rrb Seal Kit	1	75.15	

Other Parts Available

70	R112-8935	112-8935	Frame - Center - 27 in Unit	1	377.65	
71	R127-7109	127-7109	Insert-Threaded - 7 in Reel (RH)	1	25.40	
72	R127-7111	127-7111	Insert-Threaded - 7 in Reel (LH)	1	25.40	
73	R3231-25	01-173-0610, 30-9970, 3231-25, 3231-3, 900064P	Bolt - Carriage 3/8-16 x 1-1/4	2	0.69	
74	R112-8936	112-8936	Tube- Support - 27 in Units	1	33.20	

All original equipment manufacturers names and part numbers are used for identification purposes only, and we are in no way implying that our products are original equipment parts. Prices subject to change without notice.



Replaces Toro Reelmaster 3105-D Parts

27in DPA Cutting Unit - Models 03188, 03189 & 03190
Reel & Bedknife



Item No	R&R Part No.	OEM Part No.	Description	Qty Req	Price Each	Order Quantity
75	R112-8942	112-8942	Front Grass Shield Assy - 27 in Units	1	28.20	
76	R112-7451	100-9429, 112-7451	Bolt - Hex Tap 3/8-16 x 2-3/4	2	2.05	
76	R107-4026	107-4026	Bolt - Hex Tap 3/8-16 x 3-3/4	2	6.60	
77	R104-8300	104-8300, 104-8300 , 119-4041	Locknut - 5/16-18 Flanged Y/Zinc	6	0.49	
78	R110-4058	110-4058	Bracket - Chain	1	20.40	
79	R104-8301	104-8301, 104-9301, 109-6658, 133-7570	Locknut - 3/8-16 Nylon Flanged	2	0.88	
80	R107-7400	107-7400	Pin - Lynch	1	7.30	
81	R56-9520	56-9520	Bushing - Nyliner	2	1.65	
82	R110-1706	110-1706	Deflector	6	3.60	
83	R106-3924	106-3924	Bracket - Rear Roller	2	17.50	
84	R127-4284	127-4284	Washer - Special	2	4.05	
85	R115-3299	115-3299	Seal- Flocked	2	11.40	
86	R115-3296	115-3296	Bearing	2	10.35	
87	R105-5700	105-5700, 115-5258	Wave Washer - Bearing	1	2.55	
88	R112-6967	112-6967	O-Ring	2	2.05	
89	R119-0614-01	119-0614-01	Weight	1	76.40	

All original equipment manufacturers names and part numbers are used for identification purposes only, and we are in no way implying that our products are original equipment parts. Prices subject to change without notice.



Replaces Toro Reelmaster 3105-D Parts

27in DPA Cutting Unit - Models 03188, 03189 & 03190
Reel & Bedknife



Item No	R&R Part No.	OEM Part No.	Description	Qty Req	Price Each	Order Quantity
90	R101526	01-150-0970, 01-178-0620, 20-53-AGD, 321-11, 3224-8, 323-11, 323-12, 323-31, 323-4, 323-47	Bolt - Hex HD 3/8-16 x 2-1/2 GR5	2	0.96	
91	R107-2979	107-2979	Bolt - Shoulder	6	3.45	
92	R3234-11	3234-11	Bolt - Hex Washer HD	2	1.15	
93	R112-8908-01	112-8908-01	Bedbar - 27 in - Fits OEM Units Only	1	313.20	
94	R119-4151	119-4151	Screw - Bedknife 5/16-18 x 17/32	10	0.29	
95	R120-0404	120-0404	Bracket- High HOC - LH	1	53.80	
<i>Detail Description: Fits 2011 & Newer:</i>						
96	R120-0405	120-0405	Bracket - High HOC - RH	1	53.80	
<i>Detail Description: Fits 2011 & Newer:</i>						
97	R3230-30	3230-30	Bolt - Carriage 5/16x4 1/2	4	6.65	

All original equipment manufacturers names and part numbers are used for identification purposes only, and we are in no way implying that our products are original equipment parts. Prices subject to change without notice.



Replaces Toro Reelmaster 3105-D Parts

27in DPA Cutting Unit - Models 03188, 03189 & 03190
Reel & Bedknife



Item No	R&R Part No.	OEM Part No.	Description	Qty Req	Price Each	Order Quantity
99	R453011	01-166-0100, 01-166-0120, 01-166-0270, 01-166-0500, 01-166-0600, 01-166-0620, 132-4593, 2356-3, 237-12, 24-10-AD, 24-11-AD, 24-11-BD, 24-12-AD, 24-12-BD, 30-9310, 32-8190, 3256-24, 3256-3, 3256-36, 3256-4, 453011, 47-9950, 48-9220, 513458, 7-0052	Washer - Flat 3/8 SAE Y/Zinc	4	0.12	
100	R119-0626	119-0626	Shim - Roller - 1/4 in - Slotted	8	5.45	
<i>Tech Note: 2011 & Newer:</i>						
101	R115-7039	115-7039	Screw - Adjuster - Bedbar	2	29.85	
101	R137-6130	137-6130	Screw - Adjuster - Hardened - Bedbar	2	34.85	
102	R120-5118	120-5118	Shaft - Adjuster	2	31.05	
<i>Detail Description: 2012 & Newer:</i>						
103	R106-9623	106-9623	Bolt - Bedbar	2	14.90	
104	R3256-74	3256-74	Washer - Flat	1	0.68	
105	R106-9618	106-9618	Bushing - Rubber	2	8.30	
106	R120-5116	120-5116	Washer - Wave	2	6.90	

All original equipment manufacturers names and part numbers are used for identification purposes only, and we are in no way implying that our products are original equipment parts. Prices subject to change without notice.



Replaces Toro Reelmaster 3105-D Parts

27in DPA Cutting Unit - Models 03188, 03189 & 03190
Reel & Bedknife



Item No	R&R Part No.	OEM Part No.	Description	Qty Req	Price Each	Order Quantity
107	R16-9759	16-9759	Link Assy	4	46.75	
108	R93-6981	93-6981	Spacer	8	4.85	
109	R93-8806	93-8806	Washer-Hardened	16	1.55	
110	R108-0015	108-0015	Washer - Flat	2	1.20	
111	R119-4155	119-4155	Washer - Hardened	2	7.50	
112	R99-2097	99-2097	Detent - Bed Bar Adjuster	2	9.20	
113	R120-5120	120-5120	Spring - Compression	2	2.35	
114	R106-5344	106-5344	Bushing - Flanged and Keyed	4	5.35	
116	R3231-4	01-157-0440, 01-173-0612, 3231-4	Bolt - Carriage 3/8-16 x 1-1/2	2	1.30	
117	R322-16	322-16, Apr-00	Bolt - Hex HD 5/16-18 x 1-1/8	2	1.75	
118	R3296-48	119-4039, 32146-7, 3296-34, 3296-48	Locknut - 7/16-14 ESNA	2	0.58	
119	R3296-33	3296-33	Locknut - 5/8-18 ESNA Jam	12	1.40	
120	R93-6688	93-6688	Decal - Warning	1	2.45	
120	R137-9706	137-9706	Decal- Warning	1	3.95	
121	R61-1950	61-1950	Washer - Nylon - Bed Bar	4	0.67	

All original equipment manufacturers names and part numbers are used for identification purposes only, and we are in no way implying that our products are original equipment parts. Prices subject to change without notice.



Replaces Toro Reelmaster 3105-D Parts

27in DPA Cutting Unit - Models 03188, 03189 & 03190
Reel & Bedknife



Item No	R&R Part No.	OEM Part No.	Description	Qty Req	Price Each	Order Quantity
122	R453017	01-166-0050, 01-166-0240, 01-166-0800, 24-13-AD, 24-14-AD, 32-8110, 3256-26, 3256-6, 453017, 69-8980, 87-7270	Washer - Flat 1/2	2	0.29	
123	R32128-43	30-8990, 32128-43, 3290-357	Nut - Flanged Whiz - 3/8-16	6	0.65	
123	R3296-39	32127-25, 32128-36, 3290-357, 3296-17, 3296-22, 3296-39, 915663P, 99-7443	Locknut - 3/8-16 Nylon	6	1.50	
124	R107-7773	107-7773	Bolt - Soc HD Cap 5/16-18 x 2-1/2	1	7.90	
125	R323-6	01-150-0010, 01-178-0608, 20-47-AD, 20-47-AGD, 3224-2, 323-6, 49-3510, 908034P, 908332	Bolt - Hex HD 3/8-16 x 1 GR5 YZ	2	0.62	

All original equipment manufacturers names and part numbers are used for identification purposes only, and we are in no way implying that our products are original equipment parts. Prices subject to change without notice.



Replaces Toro Reelmaster 3105-D Parts

27in DPA Cutting Unit - Models 03188, 03189 & 03190
Reel & Bedknife



Item No	R&R Part No.	OEM Part No.	Description	Qty Req	Price Each	Order Quantity
126	R302-5	21-6010, 302-11, 302-37, 302-47, 302-5, 302-57, 302-58, 302-6, 31-0300, 32-9660, 60-0800, 62-3880, 92-4181	Fitting - Grease	2	0.30	
127	R92-2601	92-2601	Snap Ring	2	2.60	
128	R445722	30-8980, 32128-2, 32128-20, 32128-20	Nut - Serrated Washer	2	0.69	
129	R170714	302-34, 302-39, 62-3520	Fitting - Pressure Relief	2	2.25	
130	R94-8945	94-8945	Bushing - Bronze - Link Bar	8	2.70	
131	R322-14	01-150-0830, 01-178-0524, 30-8900, 322-14	Bolt - Hex HD 5/16-18 x 3 GR5	1	2.30	
132	R3234-7	3234-7	Bolt - Hex Washer HD 5/16-18 x 5/8	4	1.30	
133	R125-2796	125-2796	Bracket- Front HOC	2	36.60	
<i>Detail Description: Fits 2013 & Newer:</i>						
135	R110-4088-03	110-4088-03, 119-8010-03	Kickstand	1	22.35	
136	R137-5976	137-5976	Side Plate Assy - 7 in LH Aluminum	1	222.20	

All original equipment manufacturers names and part numbers are used for identification purposes only, and we are in no way implying that our products are original equipment parts. Prices subject to change without notice.



Replaces Toro Reelmaster 3105-D Parts

27in DPA Cutting Unit - Models 03188, 03189 & 03190
Reel & Bedknife



Item No	R&R Part No.	OEM Part No.	Description	Qty Req	Price Each	Order Quantity
137	R137-5979	137-5979	Side Plate Assy - 7 in RH Aluminum	1	222.20	
138	R125-1997	125-1997	Grass Shield - Rear 27 in Unit	1	52.30	
139	R130-8094	130-8094	Washer	2	4.70	
140	R3231-40	3231-40	Bolt - Carriage 3/8-16 x 2 1/4	8	1.25	
141	R3245-35	3245-35	Screw - Set 1/4-28 x 1/4	1	0.60	

All original equipment manufacturers names and part numbers are used for identification purposes only, and we are in no way implying that our products are original equipment parts. Prices subject to change without notice.