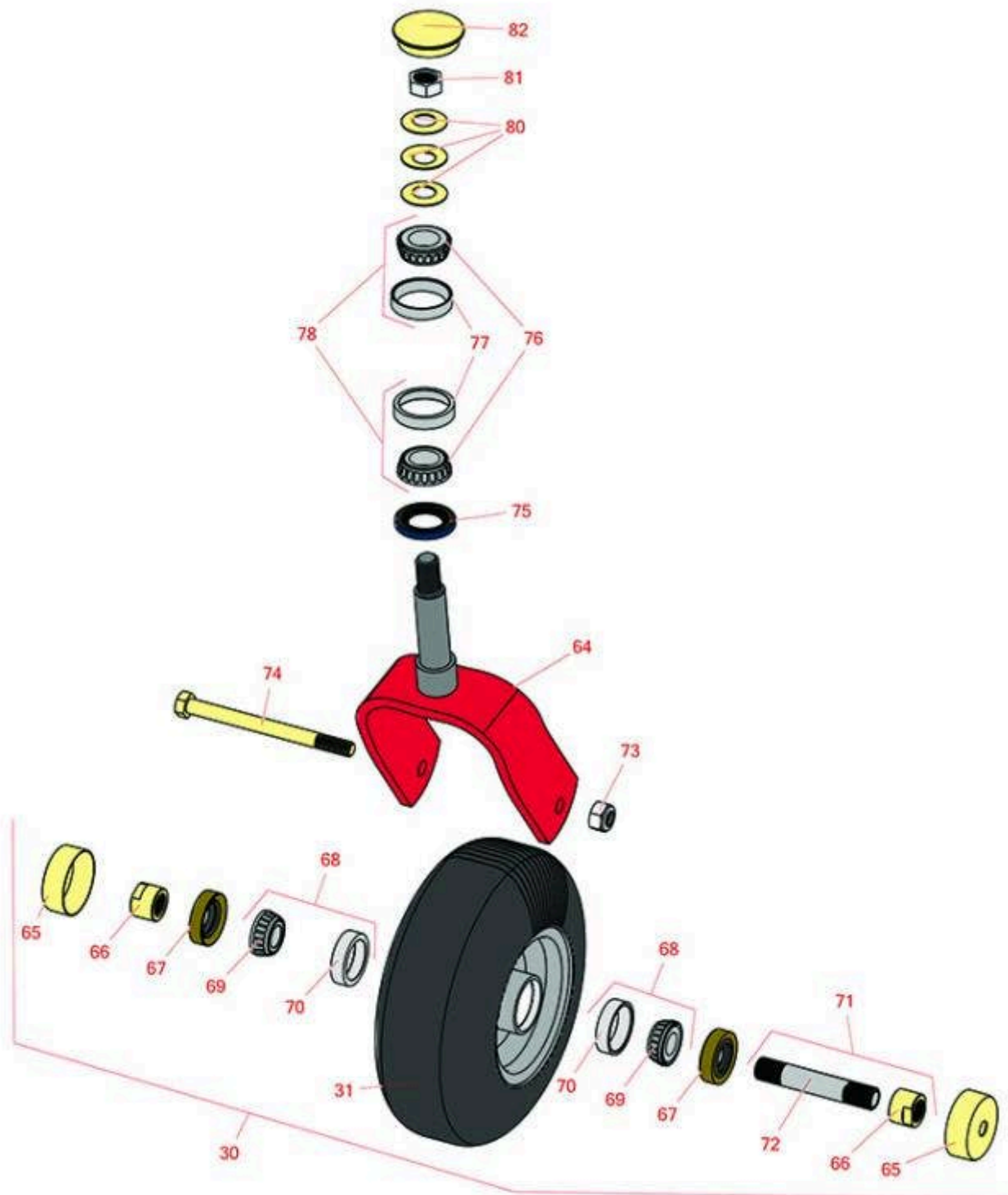




# Replaces Exmark Vantage X-Series Parts

Stand-On Mower with 48in Deck - Model VTX651GKA48400  
Caster Wheel



All original equipment manufacturers names and part numbers are used for identification purposes only, and we are in no way implying that our products are original equipment parts. Prices subject to change without notice.



# Replaces Exmark Vantage X-Series Parts

Stand-On Mower with 48in Deck - Model VTX651GKA48400  
Caster Wheel



Item No	R&R Part No.	OEM Part No.	Description	Qty Req	Price Each	Order Quantity
---------	--------------	--------------	-------------	---------	------------	----------------

## Tires

30	<b>R130-4558</b>	112-3810	Wheel-Tire and Bearing Assy	2	<b>148.15</b>	
31	<b>R130-4563</b>	110-9965	Wheel and Tire Assy	2	<b>69.65</b>	

## Other Parts Available

64	<b>R121-7988-01</b>	121-7988-01	Fork - Caster	2	<b>81.15</b>	
65	<b>R103-2768</b>	103-2768	Guard - Seal	4	<b>3.45</b>	
66	<b>R103-3051</b>	103-3051	Spacer - Nut - Hardened	4	<b>7.45</b>	
67	<b>R103-0063</b>	103-0063	Seal - Grease	4	<b>5.15</b>	
68	<b>R500534</b>	1-633585, R & R ONLY	Bearing - with Cup	4	<b>12.40</b>	

*Detail Description: Kit includes: 1 ea R254-78- Bearing Cone & R254-79 Bearing Cone:*

69	<b>R254-78</b>	1-633585	Tapered Bearing Cone	4	<b>6.40</b>	
70	<b>R254-79</b>	1-633584, R & R ONLY	Cup - Bearing	4	<b>3.40</b>	

*Detail Description: Use R254-79M installation mandrel to properly install race.:*

71	<b>R126-5359</b>	126-5359	Caster Axle Assy w/Bushing	2	<b>11.85</b>	
72	<b>R103-3157</b>	103-3157	Axle - Caster Wheel	2	<b>12.05</b>	
73	<b>R3296-25</b>	3296-45	Locknut - 1/2-13 Heavy ESNA	2	<b>2.30</b>	
74	<b>R325-20</b>	325-20	Bolt - Hx HD 1/2-13 x 6	2	<b>12.05</b>	
75	<b>R116-5647</b>	116-5647, R & R ONLY	Seal - Grease	2	<b>3.05</b>	
76	<b>R254-94</b>	1-543509	Tapered Bearing Cone	4	<b>7.55</b>	
77	<b>R254-72</b>	1-543508	Cup - Bearing	4	<b>4.05</b>	

All original equipment manufacturers names and part numbers are used for identification purposes only, and we are in no way implying that our products are original equipment parts. Prices subject to change without notice.



## Replaces Exmark Vantage X-Series Parts

*Stand-On Mower with 48in Deck - Model VTX651GKA48400  
Caster Wheel*



Item No	R&R Part No.	OEM Part No.	Description	Qty Req	Price Each	Order Quantity
78	<b>R500596</b>	R & R ONLY	Tapered Bearing Set - Cup and Cone	4	<b>14.65</b>	
80	<b>R1-633508</b>	1-633508	Washer - Spring Disc	6	<b>3.10</b>	
81	<b>R3296-51</b>	3296-51	Nut - Nylon Lock 3/4-10 Gr 8	2	<b>5.70</b>	
82	<b>R103-4882</b>	103-4882	Grease Cap - Castor	2	<b>4.45</b>	

All original equipment manufacturers names and part numbers are used for identification purposes only, and we are in no way implying that our products are original equipment parts. Prices subject to change without notice.