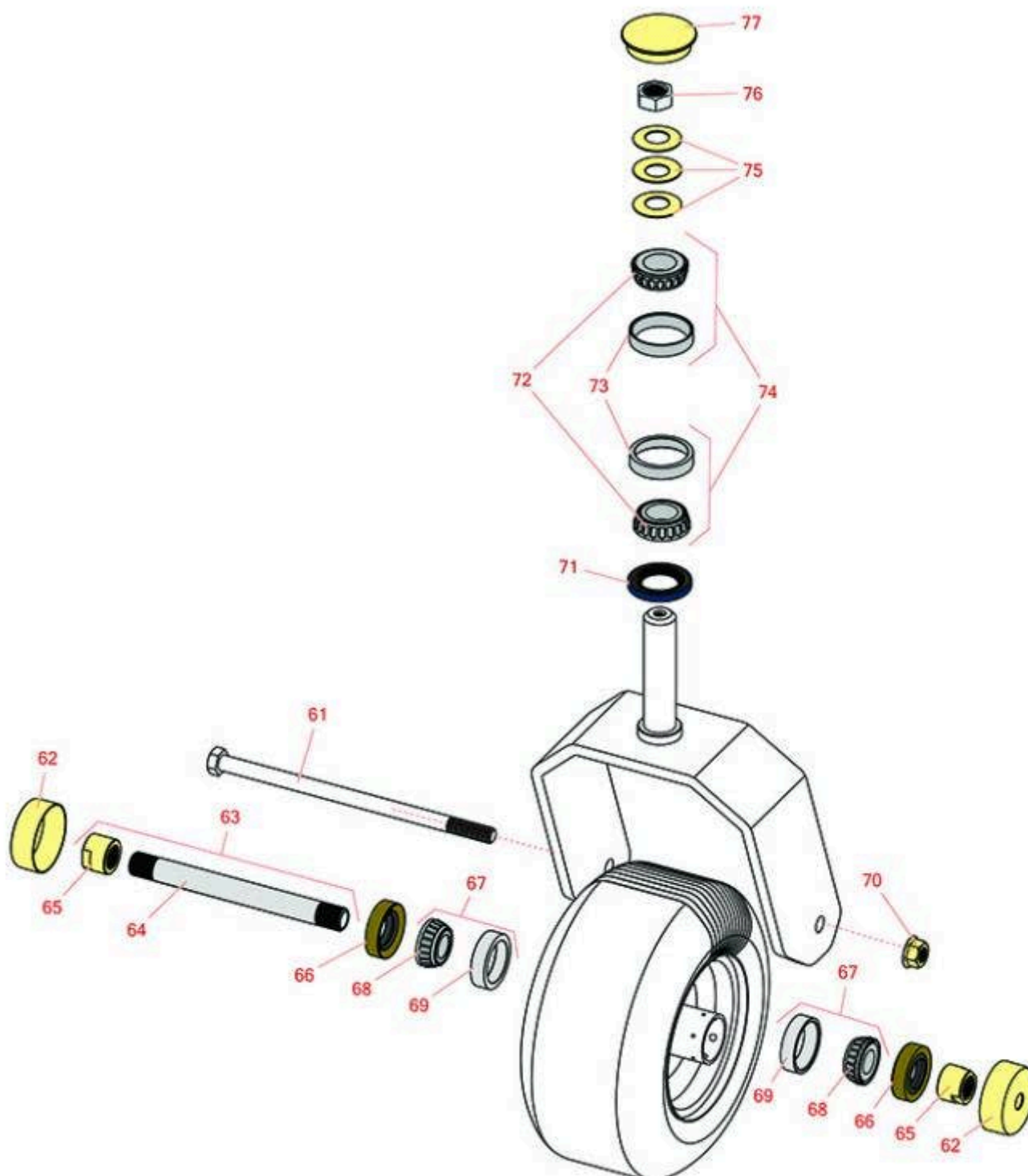




Replaces Exmark Staris S-Series Parts

Stand-On Mower with 52in Deck - Model STS730AKC52400 /
STS730GKA52400
Caster Wheel



All original equipment manufacturers names and part numbers are used for identification purposes only, and we are in no way implying that our products are original equipment parts. Prices subject to change without notice.



Replaces Exmark Staris S-Series Parts

Stand-On Mower with 52in Deck - Model STS730AKC52400 /
STS730GKA52400
Caster Wheel



Item No	R&R Part No.	OEM Part No.	Description	Qty Req	Price Each	Order Quantity
Other Parts Available						
61	R325-39	325-39	Bolt - Hx HD 1/2-13 x 9 1/2	2	5.65	
62	R103-2768	103-2768	Guard - Seal	4	3.45	
63	R126-5361	126-5361	Axle Assy - with Bushing - Caster	2	12.50	
64	R103-5156	103-5156	Axle- Caster	2	9.65	
65	R103-3051	103-3051	Spacer - Nut - Hardened	4	7.45	
66	R103-0063	103-0063	Seal - Grease	4	5.15	
67	R500534	1-633585, R & R ONLY	Bearing - with Cup	4	12.40	
<i>Detail Description: Kit includes: 1 ea R254-78- Bearing Cone & R254-79 Bearing Cone:</i>						
68	R254-78	1-633585	Tapered Bearing Cone	4	6.40	
69	R254-79	1-633584, R & R ONLY	Cup - Bearing	4	3.40	
<i>Detail Description: Use R254-79M installation mandrel to properly install race.:</i>						
70	R32128-23	32128-23, 99-5107	Nut - Lock Hex Flanged 1/2-13	2	1.55	
71	R116-5647	116-5647, R & R ONLY	Seal - Grease	2	3.05	
72	R254-94	1-543509	Tapered Bearing Cone	4	7.55	
73	R254-72	1-543508	Cup - Bearing	4	4.05	
74	R500596	R & R ONLY	Tapered Bearing Set - Cup and Cone	2	14.65	
75	R1-633508	1-633508	Washer - Spring Disc	6	3.10	
76	R3296-51	3296-51	Nut - Nylon Lock 3/4-10 Gr 8	2	5.70	

All original equipment manufacturers names and part numbers are used for identification purposes only, and we are in no way implying that our products are original equipment parts. Prices subject to change without notice.



Replaces Exmark Staris S-Series Parts

*Stand-On Mower with 52in Deck - Model STS730AKC52400 /
STS730GKA52400
Caster Wheel*



Item No	R&R Part No.	OEM Part No.	Description	Qty Req	Price Each	Order Quantity
77	R103-4882	103-4882	Grease Cap - Castor	2	4.45	

All original equipment manufacturers names and part numbers are used for identification purposes only, and we are in no way implying that our products are original equipment parts. Prices subject to change without notice.