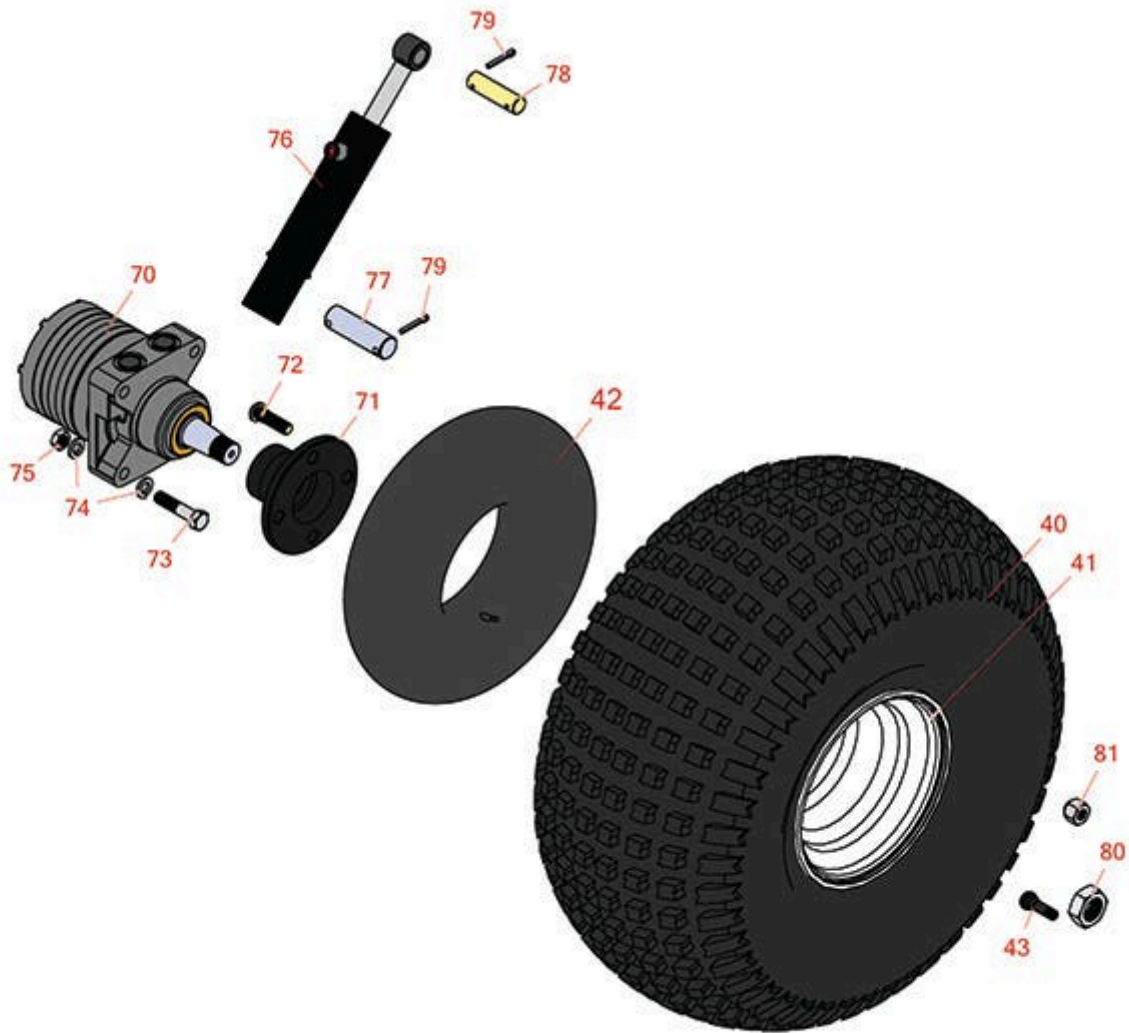




# Replaces Toro Sand Pro 14 Parts

Traction Unit - Model 08880  
Rear Wheel



FOR MORE TIRE SELECTIONS PLEASE  
CLICK ON THE TIRE ICON ABOVE

All original equipment manufacturers names and part numbers are used for identification purposes only, and we are in no way implying that our products are original equipment parts. Prices subject to change without notice.



# Replaces Toro Sand Pro 14 Parts

Traction Unit - Model 08880

Rear Wheel



Item No	R&R Part No.	OEM Part No.	Description	Qty Req	Price Each	Order Quantity
---------	--------------	--------------	-------------	---------	------------	----------------

### Tires and Wheels

40	<b>RCT537050</b>	28-1070, 85-8290	Tire - 22x11.00-8 Nhs (2 Ply) Carlisle Knobby	2	<b>106.80</b>	
40	<b>RTK1108-2S-I</b>		Tire - 22x11.00-8 (2 Ply) Kenda Scorpion	2	<b>162.95</b>	
40	<b>R95-0621</b>	95-0621	Tire w/Wheel - 22x11.00-8 Nhs (2 Ply) Carlisle Knobby	2	<b>180.65</b>	
41	<b>R94-6116</b>	114-4643, 242-53, 242-86, 46-4810, 94-6116	Rim - 8x8.5 White	2	<b>70.60</b>	
42	<b>R700141</b>	232-37, 232-47	Tube - 18x6.50/7.50/8.50/9.50-8 TR13	2	<b>10.30</b>	
43	<b>R232-24</b>	232-24, 232-35	Stem - Valve w/ Cap	2	<b>3.25</b>	

### Other Parts Available

70	<b>R75-9831</b>	49-8621, 75-9831	Hydraulic Motor - LH Rear	1	<b>1153.85</b>	
70	<b>R75-9840</b>	49-8600, 49-8630, 75-9840	Hydraulic Motor - RH Rear	1	<b>1185.20</b>	
71	<b>R93-6838-03</b>	17-4710-03, 93-6838-03	Hub-Wheel	2	<b>55.90</b>	
72	<b>R10-6830</b>	10-6830, 75-9440	Stud - Wheel 1/2-20 x 1 3/4	8	<b>8.50</b>	
73	<b>R325-10</b>	01-150-0620, 01-178-0820, 20-91-AGD, 3226-6, 325-10	Bolt	8	<b>3.25</b>	

All original equipment manufacturers names and part numbers are used for identification purposes only, and we are in no way implying that our products are original equipment parts. Prices subject to change without notice.



# Replaces Toro Sand Pro 14 Parts

Traction Unit - Model 08880

Rear Wheel



Item No	R&R Part No.	OEM Part No.	Description	Qty Req	Price Each	Order Quantity
74	<b>R3253-7</b>	01-166-0030, 01-166-0080, 01-166-0290, 01-166-0810, 23-13-GD, 3253-7, 48-9380	Washer - Lock 1/2	16	<b>0.13</b>	
75	<b>R443118</b>	01-188-0813, 22-15-AJD, 3217-9	Nut - 1/2-13 Zinc	8	<b>0.39</b>	
76	<b>R83-7000</b>	27-2510, 43-5260, 68-9700, 83-7000	Hydraulic Cylinder	1	<b>228.50</b>	
77	<b>R18-7160</b>	18-7160	Pin - Cylinder	1	<b>24.45</b>	
78	<b>R18-7310</b>	18-7310	Pin - Cylinder	1	<b>15.35</b>	
79	<b>R460050</b>	01-151-0060, 3272-23, 460050	Pin - Cotter 3/16 x 1-1/4	4	<b>0.26</b>	
80	<b>R26-3790</b>	26-3790	Nut - Hex - Wheel Motor 1-20	2	<b>14.75</b>	
81	<b>R242-50</b>	242-50	Nut - 1/2-20 Wheel	8	<b>1.50</b>	

All original equipment manufacturers names and part numbers are used for identification purposes only, and we are in no way implying that our products are original equipment parts. Prices subject to change without notice.