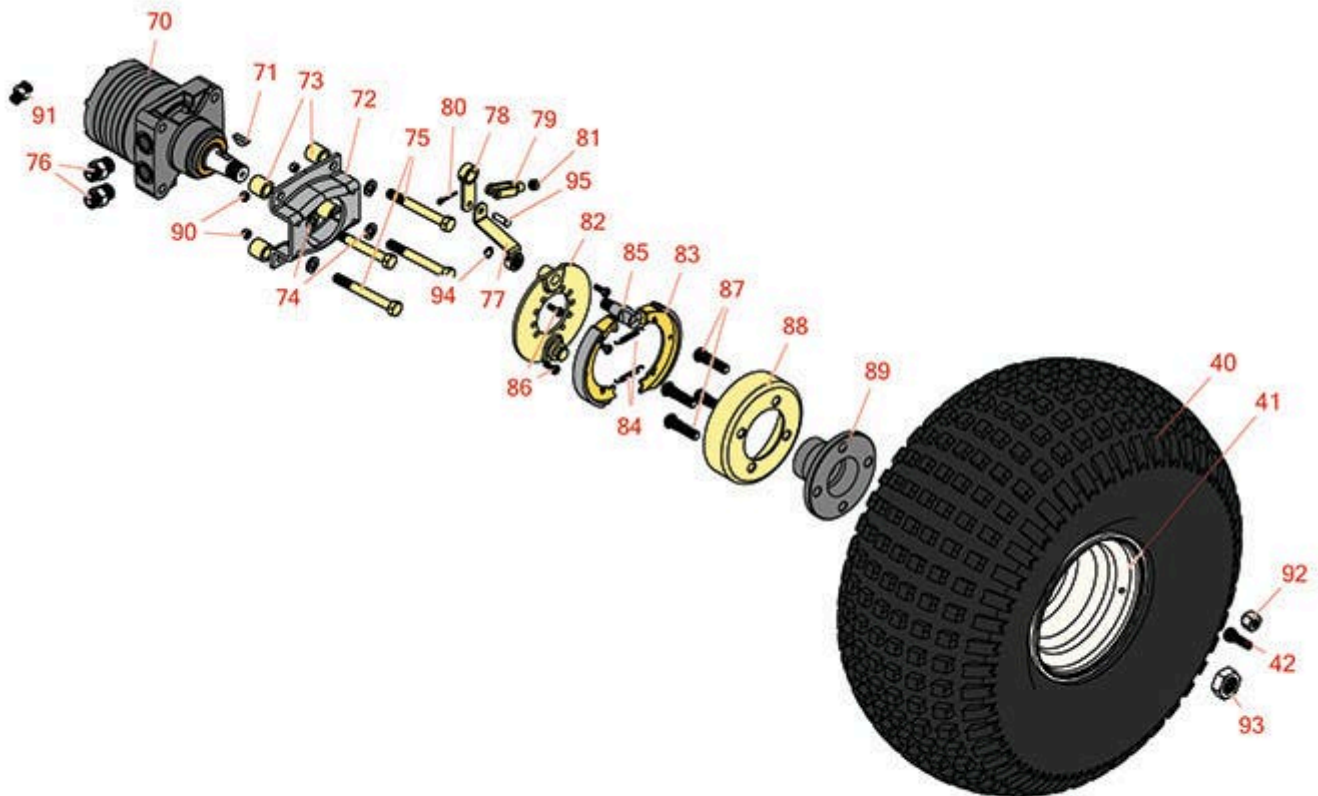




Replaces Toro Sand Pro 5000 Parts

Traction Unit
Rear Wheel



FOR MORE TIRE SELECTIONS PLEASE
CLICK ON THE TIRE ICON ABOVE

All original equipment manufacturers names and part numbers are used for identification purposes only, and we are in no way implying that our products are original equipment parts. Prices subject to change without notice.



Replaces Toro Sand Pro 5000 Parts

Traction Unit
Rear Wheel



| Item No | R&R Part No. | OEM Part No. | Description | Qty Req | Price Each | Order Quantity |
|---------|--------------|--------------|-------------|---------|------------|----------------|
|---------|--------------|--------------|-------------|---------|------------|----------------|

Tires and Wheels

| | | | | | | |
|---|--------------|--|--|---|-------------|--|
| 0 | TIRES | | Click Here to View Complete Tire Selection | 0 | 0.00 | |
|---|--------------|--|--|---|-------------|--|

| | | | | | | |
|----|------------------|---------------------|--|---|---------------|--|
| 40 | RCT537050 | 28-1070, 85-8290 | Tire - 22x11.00-8 Nhs (2 Ply) Carlisle Knobby | 2 | 112.15 | |
|----|------------------|---------------------|--|---|---------------|--|

Detail Description: Elevate your off-road adventures with the Carlisle Knobby tire. This tire offers a unique design with options available in both solid and dimple tread patterns. Whether you're tackling rugged trails or navigating through challenging terrain, the Carlisle Knobby tire delivers maximum performance and traction. It is specially designed for ATVs and golf carts, providing the reliability and durability you need for your outdoor adventures. Upgrade your ATV or golf cart with the Carlisle Knobby tire and experience the difference it makes in your outdoor excursions. Maximize your traction, durability, and versatility. Buy the Carlisle Knobby tire today and unleash the full potential of your off-road adventures.:

| | | | | | | |
|----|---------------------|--|---|---|---------------|--|
| 40 | RTK1108-2S-I | | Tire - 22x11.00-8 (2 Ply) Kenda Scorpion | 2 | 136.15 | |
|----|---------------------|--|---|---|---------------|--|

| | | | | | | |
|----|-----------------|---------|--|---|---------------|--|
| 40 | R95-0621 | 95-0621 | Tire & Wheel - 22x11.00-8 Nhs (2 Ply) Carlisle Knobby | 2 | 180.65 | |
|----|-----------------|---------|--|---|---------------|--|

| | | | | | | |
|----|-----------------|--|-------------------|---|--------------|--|
| 41 | R94-6116 | 114-4643, 242-53, 242-86, 46-4810, 94-6116 | Rim - 8x8.5 White | 2 | 70.60 | |
|----|-----------------|--|-------------------|---|--------------|--|

| | | | | | | |
|----|----------------|-------------------|---------------------|---|-------------|--|
| 42 | R232-24 | 232-24, 232-35 | Stem - Valve w/ Cap | 2 | 3.45 | |
|----|----------------|-------------------|---------------------|---|-------------|--|

Other Parts Available

| | | | | | | |
|----|-----------------|---------------------|---------------------------|---|---------------|--|
| 70 | R75-9831 | 49-8621, 75-9831 | Hydraulic Motor - LH Rear | 1 | 815.75 | |
|----|-----------------|---------------------|---------------------------|---|---------------|--|

| | | | | | | |
|----|-----------------|---------------------------------|---------------------------|---|---------------|--|
| 70 | R75-9840 | 49-8600, 49-8630, 75-9840 | Hydraulic Motor - RH Rear | 1 | 815.75 | |
|----|-----------------|---------------------------------|---------------------------|---|---------------|--|

| | | | | | | |
|----|-----------------|---------|-------------------------|---|-------------|--|
| 71 | R3257-42 | 3257-42 | Key - Woodruff 5/16 x 1 | 2 | 2.90 | |
|----|-----------------|---------|-------------------------|---|-------------|--|

| | | | | | | |
|----|--------------------|---------------------------------------|-----------------|---|--------------|--|
| 72 | R84-2000-03 | 84-2000, 84-2000-03, 84-2000-0P | Bracket - Brake | 2 | 28.50 | |
|----|--------------------|---------------------------------------|-----------------|---|--------------|--|

All original equipment manufacturers names and part numbers are used for identification purposes only, and we are in no way implying that our products are original equipment parts. Prices subject to change without notice.



Replaces Toro Sand Pro 5000 Parts

Traction Unit

Rear Wheel



| Item No | R&R Part No. | OEM Part No. | Description | Qty Req | Price Each | Order Quantity |
|---------|--------------|---|------------------------------|---------|------------|----------------|
| 73 | R92-1715 | 100005, 92-1715 | Spacer | 8 | 6.90 | |
| 74 | R3253-7 | 01-166-0030, 01-166-0080, 01-166-0290, 01-166-0810, 23-13-GD, 3253-7, 48-9380 | Washer - Lock 1/2 | 8 | 0.14 | |
| 75 | R325-13 | 01-178-0826, 20-94-AGD, 325-13, 325-26, Jul-52 | Bolt - Hex HD 1/2-13 x 3-1/4 | 8 | 3.20 | |
| 76 | R340-6 | 340-6 | Hydraulic Fitting - Straight | 4 | 11.50 | |
| 77 | R93-6850 | 114-2726, 127-8567, 93-6850 | Lever - Brake | 2 | 34.45 | |
| 78 | R83-9310 | 83-9310 | Lever - Brake | 2 | 30.55 | |
| 79 | R282-2 | 1-303105, 282-2 | Yoke | 2 | 15.95 | |
| 80 | R3272-10 | 01-151-0120, 105-7512, 3272-10, N/A | Pin - Cotter 1/8 x 3/4 | 2 | 0.14 | |
| 81 | R3220-2 | 01-191-0524, 3220-2 | Nut - Jam - 5/16-24 | 2 | 0.53 | |
| 82 | R70-9870 | 70-9870 | Plate - Backing | 2 | 111.80 | |
| 83 | R70-9840 | 70-9840 | Shoe - Brake | 4 | 23.65 | |
| 84 | R70-9880 | 70-9880 | Spring - Brake Shoe | 4 | 5.10 | |
| 85 | R104-7707 | 104-7707, 104-7708, 70-9850, 70-9860 | Cam - Brake | 2 | 41.45 | |

All original equipment manufacturers names and part numbers are used for identification purposes only, and we are in no way implying that our products are original equipment parts. Prices subject to change without notice.



Replaces Toro Sand Pro 5000 Parts

Traction Unit

Rear Wheel



| Item No | R&R Part No. | OEM Part No. | Description | Qty Req | Price Each | Order Quantity |
|---------|--------------------|--|---------------------------------|---------|---------------|----------------|
| 86 | R321-4 | 01-150-1030, 01-178-0406, 20-3-AGD, 321-4, 3222-1 | Bolt - Hex HD 1/4-20 x 3/4 | 8 | 0.55 | |
| 87 | R85-6540 | 85-6540 | Stud - Drive 1/2-20 x 2 | 8 | 8.35 | |
| 88 | R10-6850 | 10-6850 | Drum - Brake | 2 | 113.21 | |
| 89 | R93-6838-03 | 17-4710-03, 93-6838, 93-6838-03 | Hub-Wheel | 2 | 58.70 | |
| 90 | R301504 | 2296-42, 301504, 32127-24, 32128-33, 32146-17, 3296-16, 3296-42, 3296-42 , 915661P | Locknut - ESNA 1/4-20 | 8 | 0.19 | |
| 91 | R340-2 | 340-2, 60-1920 | Hydraulic Fitting - Striaight | 1 | 6.85 | |
| 92 | R242-50 | 242-50 | Nut - 1/2-20 Wheel | 8 | 1.60 | |
| 93 | R26-3790 | 26-3790 | Nut - Hex - Wheel Motor 1-20 | 2 | 15.50 | |
| 94 | R32120-47 | 32120-47, 4583, 5701P | Ring-Retaining - External | 2 | 1.20 | |
| 95 | R283-1 | 283-1, 283-13 | Pin - Clevis | 2 | 1.20 | |

All original equipment manufacturers names and part numbers are used for identification purposes only, and we are in no way implying that our products are original equipment parts. Prices subject to change without notice.