

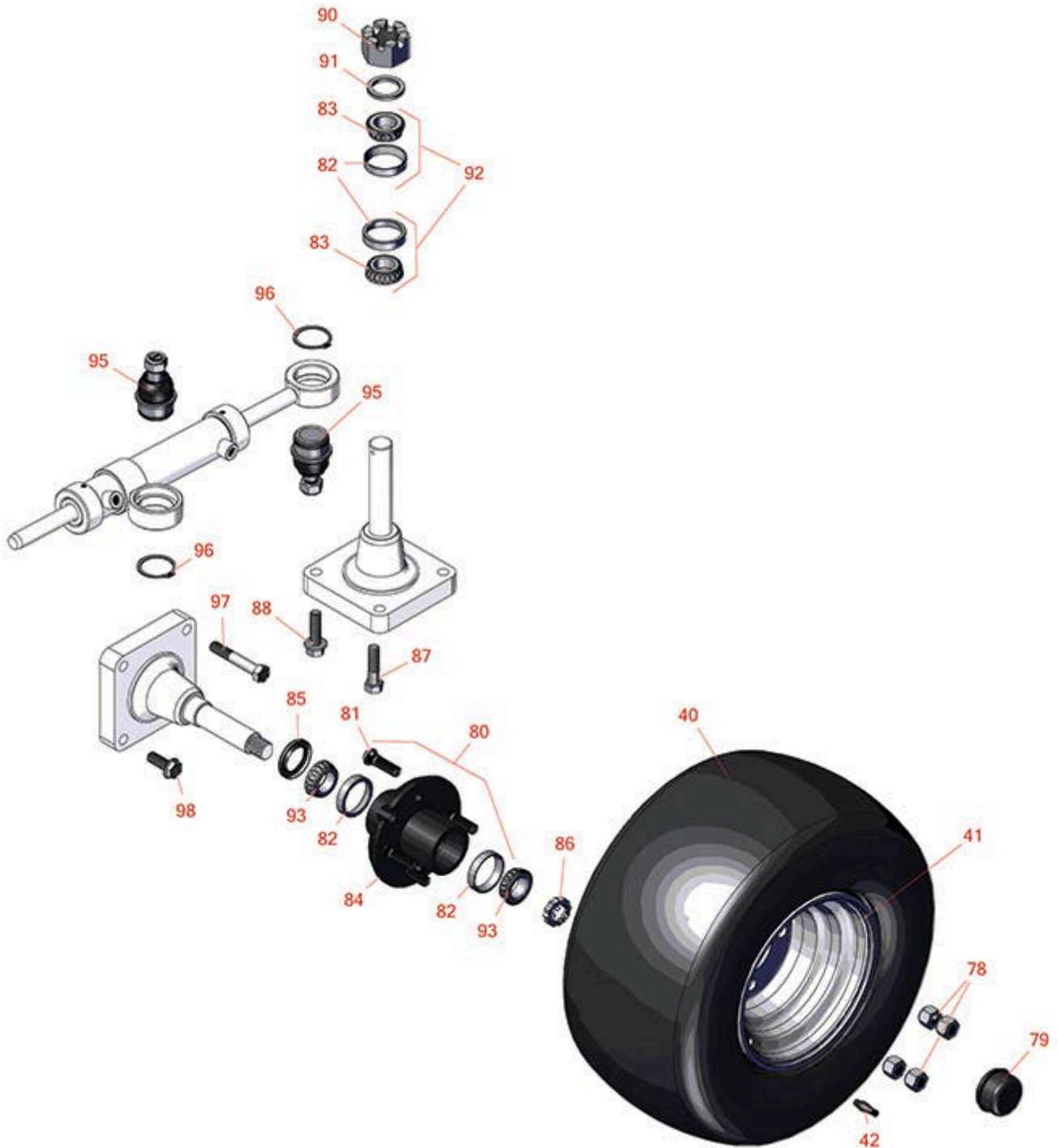


# Replaces Toro Greensmaster TriFlex

## 3400 Parts

Traction Unit - Model 04520

Rear Wheel



All original equipment manufacturers names and part numbers are used for identification purposes only, and we are in no way implying that our products are original equipment parts. Prices subject to change without notice.



# Replaces Toro Greensmaster TriFlex 3400 Parts

Traction Unit - Model 04520  
Rear Wheel



Item No	R&R Part No.	OEM Part No.	Description	Qty Req	Price Each	Order Quantity
<b>Tires</b>						
40	<b>R120-2783</b>	120-2783	Tire - 19x10.5-8 (4-Ply) Smooth	1	<b>106.95</b>	
41	<b>R217-60</b>	217-60, 242-49	Wheel - with Valve Stem - White	1	<b>59.05</b>	
42	<b>R232-27</b>	232-27, 232-31	Stem - Valve w/ Cap	1	<b>4.15</b>	
<b>Other Parts Available</b>						
78	<b>R242-50</b>	242-50	Nut - 1/2-20 Wheel	4	<b>1.50</b>	
79	<b>R241-119</b>	01-269-0070, 01-269-0280, 01-286-0040, 241-119, 30-9930, 40438	Cap-Dust	1	<b>7.25</b>	
80	<b>R117-8251</b>	117-8251	Hub w/Races & Studs	1	<b>51.05</b>	
81	<b>R114-3918</b>	1-633926, 114-3918	Stud - Wheel	4	<b>2.55</b>	
82	<b>R254-72</b>	01-103-0050, 01-103-0120, 01-103-0140, 1-543508, 254-71, 254-72, 40439, 62-3340, 99-4511	Cup - Bearing	4	<b>3.85</b>	
83	<b>R254-94</b>	1-543509, 254-94, 32-8090, 32-8240, 32-9640, 40440, 62-3330	Tapered Bearing Cone	2	<b>7.15</b>	
84	<b>R117-5115</b>	117-5115	Hub Assy	1	<b>54.80</b>	

All original equipment manufacturers names and part numbers are used for identification purposes only, and we are in no way implying that our products are original equipment parts. Prices subject to change without notice.



# Replaces Toro Greensmaster TriFlex 3400 Parts

Traction Unit - Model 04520  
Rear Wheel



Item No	R&R Part No.	OEM Part No.	Description	Qty Req	Price Each	Order Quantity
85	<b>R112-1690</b>	112-1690	Seal - Hub	1	<b>6.80</b>	
86	<b>R93-0307</b>	93-0307	Nut - Lock Retainer	1	<b>1.90</b>	
87	<b>R325-8</b>	01-150-0590, 01-178-0816, 20-89-AGD, 3226-4, 325-8	Bolt	2	<b>3.15</b>	
88	<b>R3234-22</b>	3234-22	Bolt - 1/2-13 x 1 3/4 Hx HD Fl	2	<b>17.55</b>	
90	<b>R32136-9</b>	32136-9	Nut - 1-1/4-12 Slotted	1	<b>6.30</b>	
91	<b>R18-6320</b>	18-6320	Washer - Steering Fork	1	<b>3.15</b>	
92	<b>R500596</b>		Tapered Bearing Set - Cup and Cone	1	<b>13.95</b>	
93	<b>R254-92</b>	01-102-0070, 01-102-0120, 254-92, 95-2646, 99-4501	Tapered Bearing Cone	2	<b>10.25</b>	
95	<b>R121-3605</b>	121-3605, R121-3605	Ball Joint	2	<b>59.85</b>	
96	<b>R32151-104</b>	32151-104	Ring - Retaining, Ex	2	<b>4.35</b>	
97	<b>R325-12</b>	01-150-0320, 01-150-0880, 01-178-0824, 20-93-AD, 325-12	Bolt - Hx HD	2	<b>5.35</b>	
98	<b>R3234-38</b>	3234-38	Bolt - Flanged Hex 1/2-13 x 1-1/4	2	<b>3.55</b>	

All original equipment manufacturers names and part numbers are used for identification purposes only, and we are in no way implying that our products are original equipment parts. Prices subject to change without notice.