

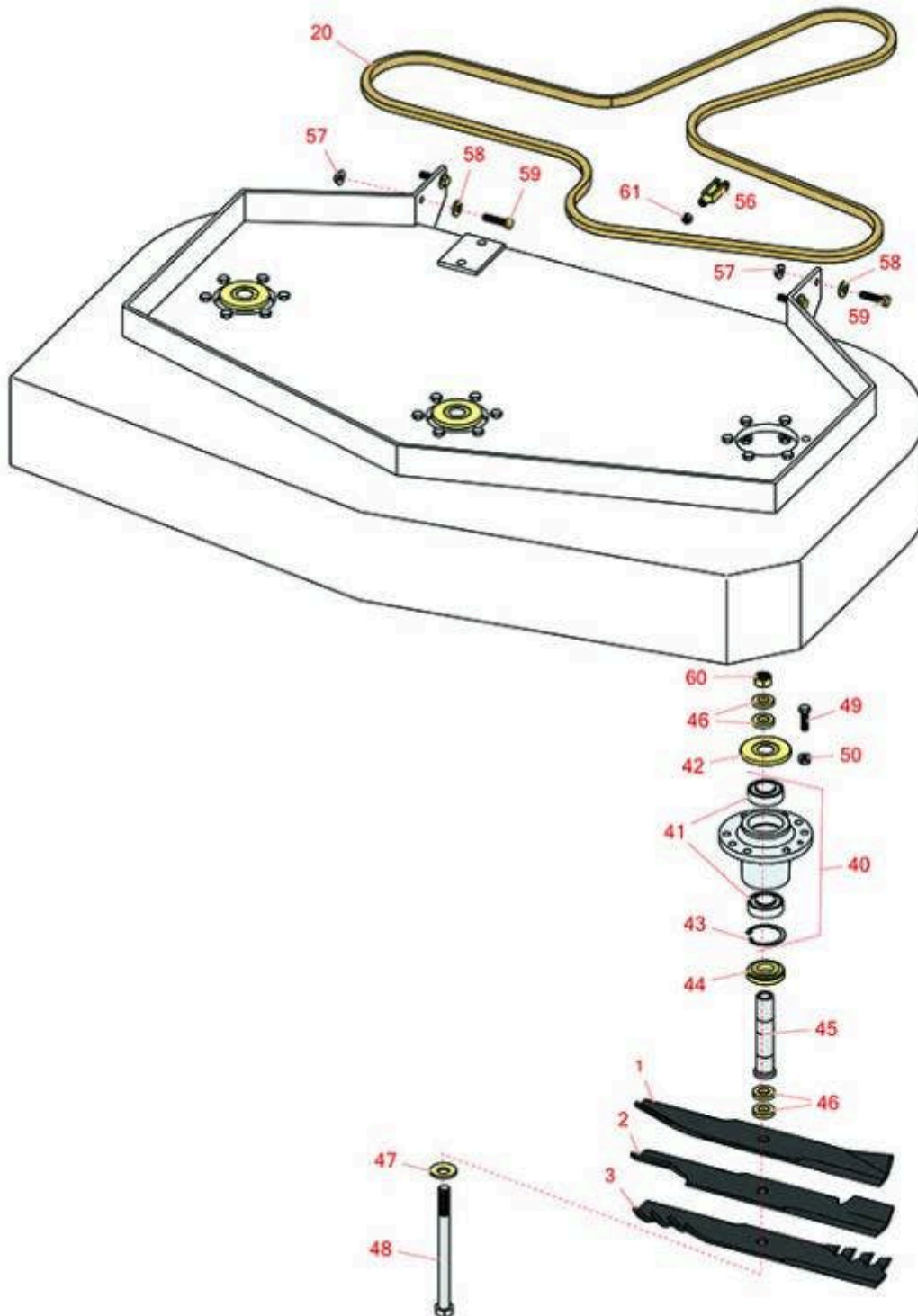


Replaces Exmark Viking Parts

Walk Behind Mower - Model VHS481GKA48300 with 48in

Deck

48in Deck



All original equipment manufacturers names and part numbers are used for identification purposes only, and we are in no way implying that our products are original equipment parts. Prices subject to change without notice.



Replaces Exmark Viking Parts

Walk Behind Mower - Model VHS481GKA48300 with 48in Deck
48in Deck



Item No	R&R Part No.	OEM Part No.	Description	Qty Req	Price Each	Order Quantity
Rotary Blades						
1	R103-6581	103-6581	Mower Blade - 16-1/4 Mulch	3	16.45	
2	RRB3062-1600	103-6583, 103-6583-S	Mower Blade - High-Lift 16.25 x 2.5in x 5/8 Mt Hole	3	12.45	
3	RRB4062-1600	116-5178	Mower Blade - Mulcher 16.25 x 2.5in x 5/8 Mt Hole	3	24.65	
20	R1-403174	1-403174	Drive Belt - Main Deck 48"	1	62.45	
Other Parts Available						
40	R103-8280	103-8280	Spindle Assy w/Bearings	3	173.80	
41	R103-2477	103-2477	Bearing - Jackshaft	6	41.65	
42	R103-1330	103-1330	Guard - Bearing - Top	3	3.10	
43	RC-10025	32120-8	Ring - Retaining	3	2.15	
44	R103-2535	103-2535	Spacer-Guard, Bottom	3	10.65	
45	R1-323529	1-323529	Tube - Spindle - Short	3	66.40	
46	R1-323539	1-323539	Spacer	12	3.20	
47	R1-513208	1-513208	Washer - Spring	3	5.25	
48	R1-800861	1-800861	Bolt - 5/8-18x8 Hex Hx GR5	3	12.45	
49	R400264	323-29, 323-7	Bolt - Hex HD 3/8-16 x 1-1/4	18	0.40	
50	R3296-39	32128-43, 3296-39	Locknut - 3/8-16 Nylon	18	1.40	
56	R282-2	1-303105	Yoke	1	15.15	
57	R32128-43	32128-43, 3290-357, 3296-29	Nut - Flanged Whiz - 3/8-16	8	0.62	

All original equipment manufacturers names and part numbers are used for identification purposes only, and we are in no way implying that our products are original equipment parts. Prices subject to change without notice.



Replaces Exmark Viking Parts

Walk Behind Mower - Model VHS481GKA48300 with 48in
Deck
48in Deck



Item No	R&R Part No.	OEM Part No.	Description	Qty Req	Price Each	Order Quantity
58	R98-5975	98-5975	Washer - Belleville	9	2.40	
59	R323-8	323-8	Bolt - Hex HD 3/8-16 x 1-1/2 GR8	8	1.50	
60	R3219-6	3219-6	Nut - 5/8-18 Gr 8 Hex	3	2.70	
61	R3219-2	3219-2	Nut - 5/16-24 Zinc	1	0.37	

All original equipment manufacturers names and part numbers are used for identification purposes only, and we are in no way implying that our products are original equipment parts. Prices subject to change without notice.