

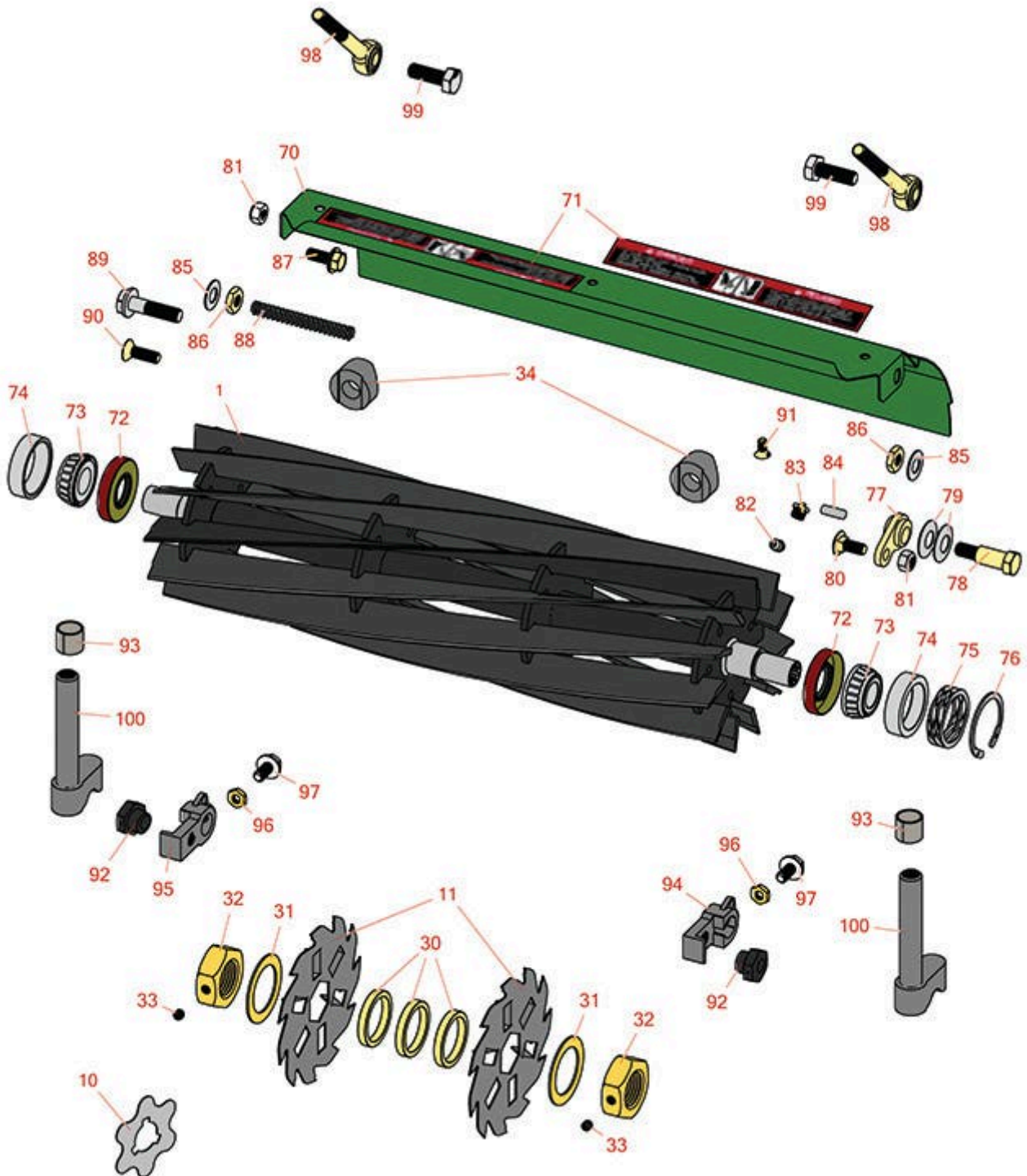


Replaces John Deere 6080A Reel Mower

Parts

Cutting Unit

Reel & Bedknife



All original equipment manufacturers names and part numbers are used for identification purposes only, and we are in no way implying that our products are original equipment parts. Prices subject to change without notice.



Replaces John Deere 6080A Reel Mower

Parts

Cutting Unit
Reel & Bedknife



Item No	R&R Part No.	OEM Part No.	Description	Qty Req	Price Each	Order Quantity
---------	--------------	--------------	-------------	---------	------------	----------------

R&R Reels, Lifetime Guaranteed

1	RTCA19348	TCA19348	Reel - 7 Blade	1	304.90	
1	RTCA19349	TCA19349	Reel - 11 Blade	1	372.60	

Blades

10	RMT2624	MT2624	Knife - Greens Conditioner	30	4.65	
11	R150209C	TCU26776	Verti-Cut Blade - Carbide Tipped 2mm	21	11.95	

Other Parts Available

30	RET17713	ET17713	Spacer - Vertical Mower Shaft	63	3.45	
31	R24H1513	24H1513	Washer	2	4.15	
32	RET17053	ET17053	Nut - 1-1/8-7 Jam Incl Set Screw	2	9.95	
33	R3245-35	22H841	Screw - Set 1/4-28 x 1/4	2	0.57	
34	RTCUC25394	TCU25394, TCU27453	Base	2	49.60	
70	RTCA18643	TCA18643	Shield - (w/Labels)	1	82.80	
71	RMT6517	MT6517	Label - Warning	2	7.25	
72	RET14566	ET14566	Seal - Reel	2	6.80	
73	R254-78	JD8188	Tapered Bearing Cone	2	6.05	
74	R254-79	JD8226	Cup - Bearing	2	3.20	
<i>Tech Note: Use R254-79M installation mandrel to properly install race.:</i>						
75	RTCUC23880	TCU23880, TCU28964	Compression Spring - Reel Bearing	1	6.05	
76	R40M7226	40M1862, 40M7226	Ring - Retaining	1	9.05	

All original equipment manufacturers names and part numbers are used for identification purposes only, and we are in no way implying that our products are original equipment parts. Prices subject to change without notice.



Replaces John Deere 6080A Reel Mower

Parts

Cutting Unit
Reel & Bedknife



Item No	R&R Part No.	OEM Part No.	Description	Qty Req	Price Each	Order Quantity
77	RTC24334	TCU24334	Retainer	2	38.95	
78	RMT3016	MT3016	Bolt - Bed Bar	2	6.55	
79	RN168012	N168012	Washer - Spring	4	1.55	
80	R03M7184	03M7184	Bolt - Carriage M8	2	0.47	
81	RH137328	H137328	Locknut	4	1.30	
82	R302-5	JD7797, JD7842, JD7844	Fitting - Grease	4	0.27	
83	R170714	E14814	Fitting - Pressure Relief	2	2.25	
84	RR30587	30587, R30587	Pin - Dowell 1/4 Dia. x .75	4	1.40	
85	RET16679	ET16679	Washer - Spring	8	0.90	
86	R14M7152	14M7152	Nut - 10mm x 1.5 Jam	2	0.23	
87	R19M7866	19M7866	Bolt - Flanged Hex M8-1.25 x 20	2	1.85	
88	RTC25398	TCU25398	Compression Spring	1	5.85	
89	R19M7804	19M7804	Bolt - Flanged Hex M10-1.5 x 40	4	2.45	
90	R19M7585	19M7585	Screw - M8 x 25	2	1.55	
91	R101278	21M7194	Screw - Bedknife	11	0.39	
92	RTC28635	TCU24555, TCU28635	Eccentric	2	15.55	
93	RMT74	MT74	Bushing - Roller Bkt	2	4.85	
94	RUC18211	UC18211	Bracket	1	55.90	
95	RUC16109	UC16109	Bracket	1	55.90	
96	R14M7151	14M7151	Nut - Jam Roller Adj	2	0.70	

All original equipment manufacturers names and part numbers are used for identification purposes only, and we are in no way implying that our products are original equipment parts. Prices subject to change without notice.



Replaces John Deere 6080A Reel Mower

Parts

Cutting Unit

Reel & Bedknife



Item No	R&R Part No.	OEM Part No.	Description	Qty Req	Price Each	Order Quantity
97	R33114-016	19M7162	Bolt - Hx HD 8mm x 1.25 x 15	2	0.40	
98	RTC25223	TCU25223, TCU30798	Spherical Rod End	2	29.85	
99	R19M7168	19M7168	Bolt - M10-1.5 x 30 mm Hex Head Class 8.8	2	0.95	
100	RAUC13598	AUC13598	Adjuster	2	71.35	
100	RAUC13512	AUC13512	Adjuster	2	69.95	

All original equipment manufacturers names and part numbers are used for identification purposes only, and we are in no way implying that our products are original equipment parts. Prices subject to change without notice.